

	<b>இந்திய அரசு</b> இந்தியவானிலைஆய்வுதறை மண்டலவானிலைஆய்வுமையம் 6, கல்லூரிசாலை, சென்னை 600006 <b>தொலைபேசி: 044- 28271951</b>		<b>GOVERNMENT OF INDIA</b> <b>INDIA METEOROLOGICAL DEPARTMENT</b> <b>Regional Meteorological Centre</b> <b>No. 6, College Road,</b> <b>Chennai-600006</b> <b>Phone: 044- 28271951</b>
---	---	---	--

<b>DATE: 27-10-2024</b>	<b>Time of Issue: 16:00 hrs. IST</b>
-------------------------	--------------------------------------

**Sub: Rain/Thunderstorm warning/Lightning warning**

VALIDITY	WEATHER PHENOMENA (LIKELY/VERY LIKELY/MOST LIKELY)	DISTRICT AFFECTED (ISOLATED/A FEW/MANY/MOST PLACES)	IMPACT
(Upto 19:00 hrs. IST of 27-10-2024)	Light Thunderstorm and lightning with Light to Moderate rain is very likely.	At isolated places over <b>Kancheepuram, Chengalpattu, Tiruvannamalai, Krishnagiri, Tirupathur, Vellore. Ariyalur, Ramanathapuram, Pudukottai, Sivaganga, Madurai, Mayiladuthurai, Nagapattinam</b> districts of Tamilnadu <b>and Karaikal area.</b>	Water logging in some areas. Slippery roads in some areas. Traffic may be affected in some areas. Minor damage due to loose/unsecured structures.

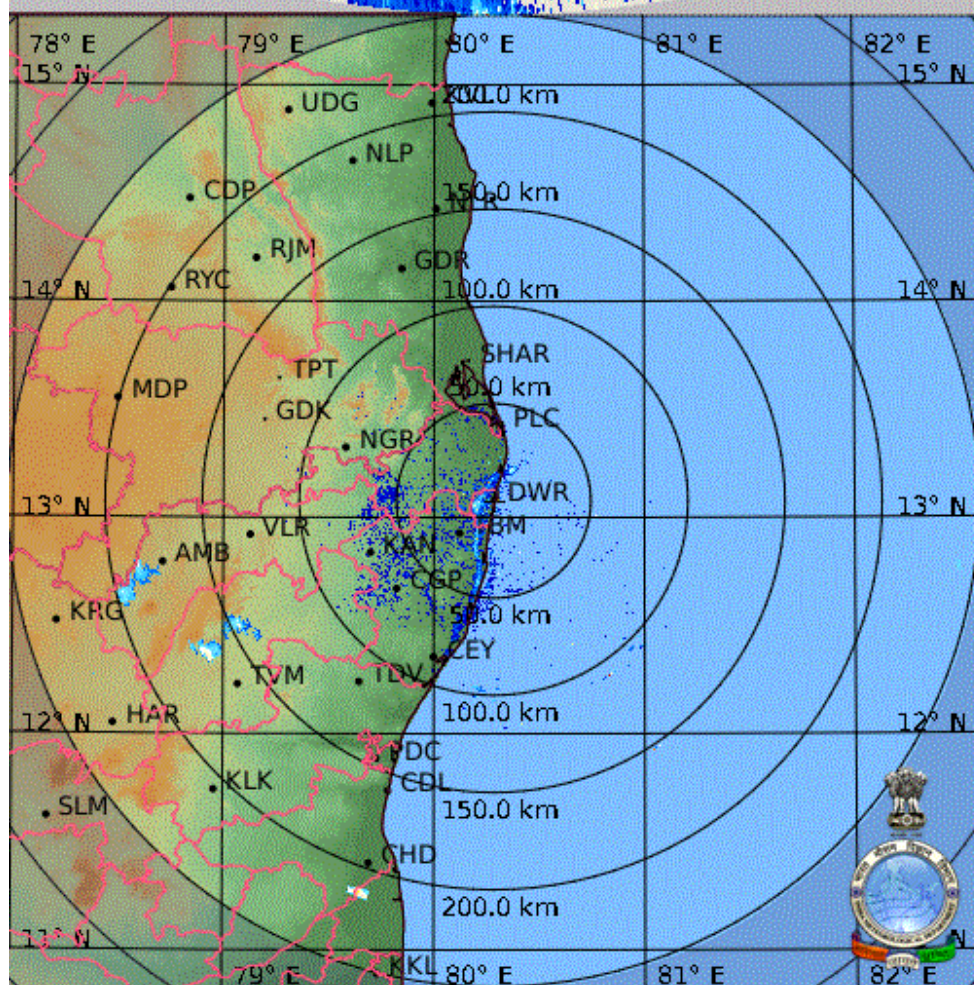
Duty Officer  
 For Director In-Charge  
 Regional Weather Forecasting Centre  
 Regional Meteorological Centre, Chennai



18.0 km

09:50

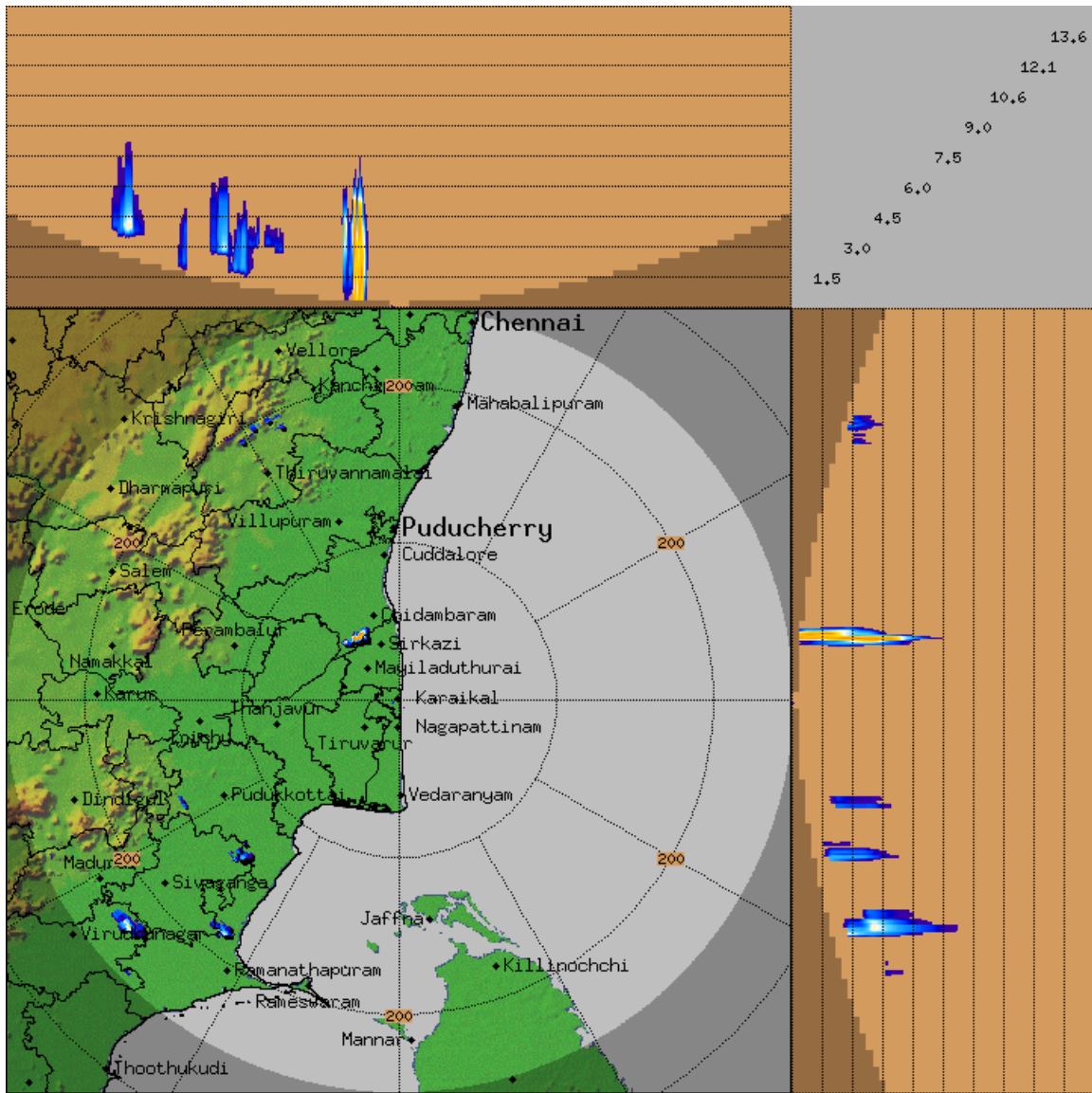
0.1 km



15:20

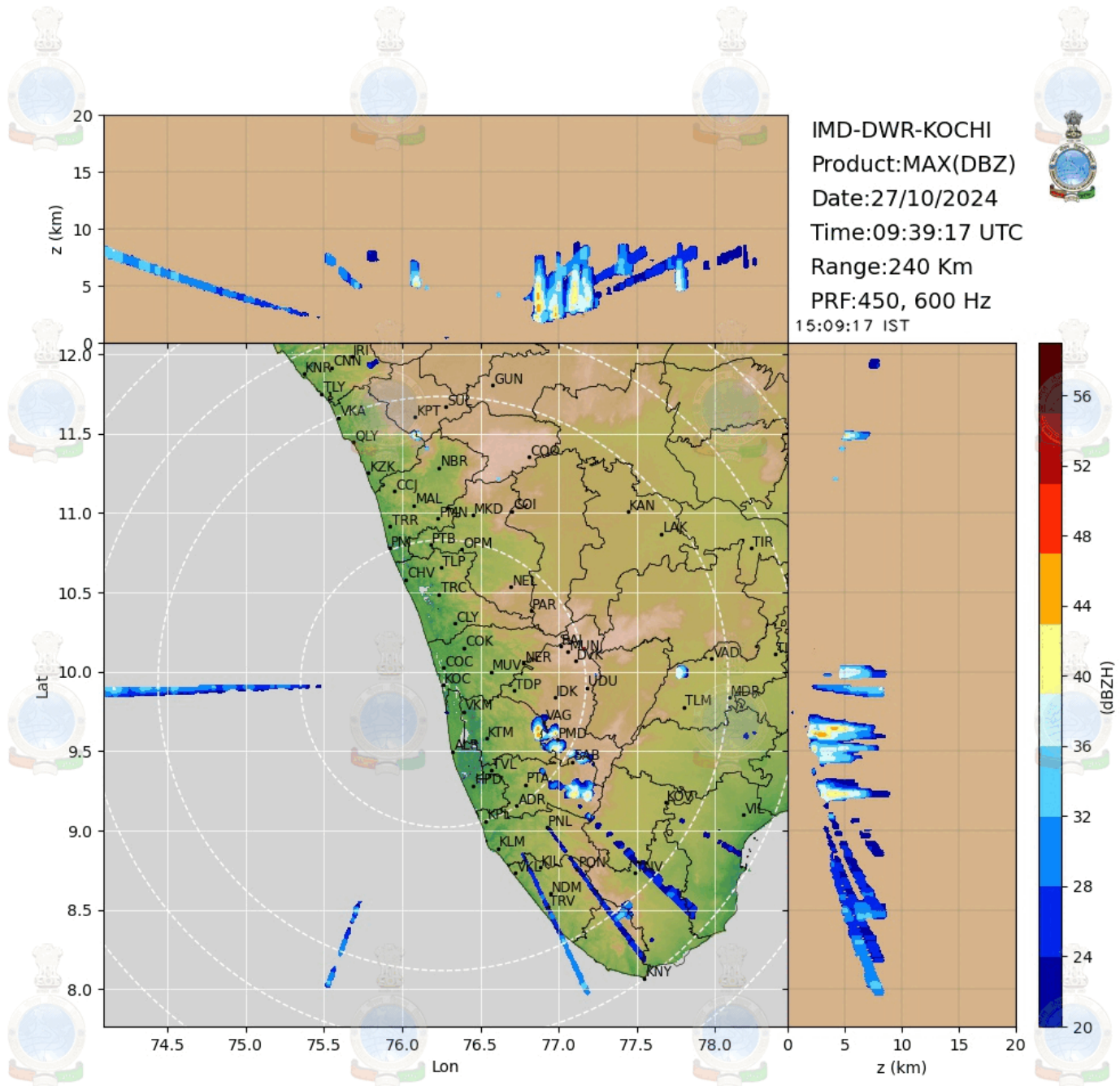
Pdf File:  
Clutter File  
Time sample  
PRF:  
Range:  
Height:  
  
Hor Res:  
Vert Res:  
Data:  
Rainbow





KARAIKAL-RADAR  
 Max with panels  
 MAX\_Z  
 Task: IMD-B  
 Min Hgt:0.0 km  
 Max Hgt:15.0 km  
 Max Range:250 km  
**10:04:34Z**  
**27 OCT 2024 UTC**  
 15:34:34 IST

57.3 >60.0  
 54.7 57.3  
 52.0 54.7  
 49.3 52.0  
 46.7 49.3  
 44.0 46.7  
 41.3 44.0  
 38.7 41.3  
 36.0 38.7  
 33.3 36.0  
 30.7 33.3  
 28.0 30.7  
 25.3 28.0  
 22.7 25.3  
 20.0 22.7  
 Reflectivity in dBZ



## Thunderstorm & Lightning: Do's and Don'ts

### (i) If at home or work –

#### Preparation:

- ✓ Look for darkening skies and increased wind.
- ✓ If you hear thunder, you are close enough to be struck by lightning.
- ✓ Keep monitoring local media for updates and warning instructions.
- ✓ Stay indoors and avoid travel if possible.
- ✓ Close windows and doors, and secure objects outside your home (e.g. furniture, bins, etc.).
- ✓ Ensure that children and animals are inside.
- ✓ Unplug unnecessary electrical appliances (to isolate them from the main power supply which may conduct a power surge during a lightning storm).
- ✓ Remove tree timber or any other debris that may cause a flying accident.

#### Response:

- ✓ Avoid taking a bath or a shower, and stay away from running water. This is because lightning can travel along metal pipes. Keep away from doors, windows, fireplaces, stoves, bathtubs, or any other electrical conductors.
- ✓ Avoid using corded phones and other electrical equipment that can conduct lightning.

### (ii) If Outdoor -

#### Response:

- ✓ Go to safe shelter immediately – avoid metal structures and constructions with metal sheeting.
- ✓ Ideally, find shelter in a low-lying area and make sure that the spot chosen is not likely to flood.
- ✓ Crouch down with feet together and head down to make yourself a smaller target.
- ✓ Hair standing up on the back of your neck could indicate that lightning is imminent.
- ✓ Do not lie flat on the ground; this will make a bigger target.
- ✓ Keep away from all utility lines (phone, power, etc.), metal fences, trees, and hilltops.
- ✓ Do not take shelter under trees as these conduct electricity.
- ✓ Rubber-soled shoes and car tyres do not offer protection from lightning.

### (iii) If travelling -

#### Response:

- ✓ Get off bicycles, motorcycles or farm vehicles that may attract lightning.
- ✓ Get to a safe shelter.
- ✓ If boating or swimming, get to land as quickly as possible and take shelter.
- ✓ During a storm, remain in your vehicle until help arrives or the storm has passed (the metal roof will provide protection if you are not touching metal inside); windows should be up; park away from trees and power lines.

### (iv) If struck by lightning -

#### Treatment:

- ✓ Take the person who is struck by lightning to a hospital.
- ✓ If possible, give basic First Aid.
- ✓ People struck by lightning carry no electrical charge and can be handled safely.
- ✓ Check for broken bones, loss of hearing and eyesight.
- ✓ A victim of a lightning strike can suffer varying degrees of burn. Check the impact point and where the electricity left the body for injury marks.

(pl visit <https://ndma.gov.in/Resources/awareness/lightning/visuals>)