



**India Meteorological Department
Ministry of Earth Sciences**

**Regional Meteorological Centre
6, College Road, Chennai 600 006**

**HEAVY TO VERY HEAVY RAINFALL WITH ISOLATED EXTREMELY HEAVY RAINFALL
WARNING UPDATE**

UPDATE No.2

DATE: 28.11.21

TIME OF ISSUE: 01:00 HRS IST

DATE/TIME (IST) OF OBSERVATION	01:00 HRS IST OF 28.11.21																												
Realised Rainfall Reports	<p>(i) Under the influence of recurrent above normal rainfall activity, northeast monsoon seasonal rainfall from 01.10.21 to 27.11.21 has so far been <u>largely excess</u> (+74%). Almost all districts except Madurai have received excess to <u>large excess</u> rainfall. Subdivisional daily rainfall graph for the season so far is given in <u>Fig.1a</u>. Cumulative spatial rainfall distribution during the past 29 days from 0830 IST of 28.10.21 to 0830 IST of 26.11.21, depicted in map form, is given in <u>Fig.1b</u>.</p> <p>(ii) <u>Significant rainfall (cm) during the past 24-hr ending 0830 IST of 27.11.21:</u></p> <table border="1"> <thead> <tr> <th colspan="2">CHIEF AMOUNT OF RAINFALL OF TAMILNADU & PUDUCHERRY [FROM 0830 IST OF 26-11-2021 TO 0830 IST OF 27-11-2021]</th></tr> <tr> <th>RAINFALL (IN 'CM')</th><th>STATIONS</th></tr> </thead> <tbody> <tr> <td>20</td><td>Avadi (dist Tiruvallur)</td></tr> <tr> <td>18</td><td>Mahabalipuram (dist Chengalpattu) Chengalpattu (dist Chengalpattu) Cheyyur ARG (dist Chengalpattu)</td></tr> <tr> <td>17</td><td>Kattapakkam (dist Kancheepuram)</td></tr> <tr> <td>16</td><td>Thirukalukundram (dist Chengalpattu)</td></tr> <tr> <td>15</td><td>Maduranthagam (dist Chengalpattu), Cholavaram (dist Tiruvallur), Parangipettai (dist Cuddalore)</td></tr> <tr> <td>13</td><td>Tiruvallur (dist Tiruvallur), Hindustan University (dist Kancheepuram)</td></tr> <tr> <td>12</td><td>Kancheepuram (dist Kancheepuram), Chembarambakkam (dist Tiruvallur), Ponneri (dist Tiruvallur), Tambaram (dist Chengalpattu), Ambattur (dist Tiruvallur)</td></tr> <tr> <td>11</td><td>Chidambaram (dist Cuddalore), Karaikal (dist Karaikal), Koratur (dist Tiruvallur), Thirupporur (dist Chengalpattu), Red Hills (dist Tiruvallur), Chidambaram Aws (dist Cuddalore)</td></tr> <tr> <td>10</td><td>Kelambakkam (dist Chengalpattu), Sriperumbudur (dist Kancheepuram), Perambur (dist Chennai), Anna Uty Arg (dist Chennai), Thamaraiappakkam (dist Tiruvallur), DGP Office (dist Chennai), Chennai(n) (dist Chennai)</td></tr> <tr> <td>9</td><td>Bhuvanagiri (dist Cuddalore), Chennai Ap (dist Chennai), Kollidam (dist Mayiladuthurai), Sirkali (dist Mayiladuthurai), Uthiramerur (dist Kancheepuram), Poondi (dist Tiruvallur), Gummidipoondi (dist Tiruvallur)</td></tr> <tr> <td>8</td><td>Thiruvallangadu (dist Tiruvallur), Cheyyur (dist Chengalpattu), Vembakkam (dist Tiruvannamalai), MGR Nagar (dist Chennai), Satyabhama Uty Arg (dist Chengalpattu), Ennore Aws (dist Tiruvallur), K.M.Koil (dist Cuddalore)</td></tr> <tr> <td>7</td><td>Walajabad (dist Kancheepuram), Anna University (dist Chennai), Tiruvallur (dist Tiruvallur), Cuddalore (dist Cuddalore), Poonamallee (dist Tiruvallur), Nannilam (dist Tiruvallur), Nagapattinam (dist Nagapattinam), Gingee (dist Villupuram)</td></tr> </tbody> </table>	CHIEF AMOUNT OF RAINFALL OF TAMILNADU & PUDUCHERRY [FROM 0830 IST OF 26-11-2021 TO 0830 IST OF 27-11-2021]		RAINFALL (IN 'CM')	STATIONS	20	Avadi (dist Tiruvallur)	18	Mahabalipuram (dist Chengalpattu) Chengalpattu (dist Chengalpattu) Cheyyur ARG (dist Chengalpattu)	17	Kattapakkam (dist Kancheepuram)	16	Thirukalukundram (dist Chengalpattu)	15	Maduranthagam (dist Chengalpattu), Cholavaram (dist Tiruvallur), Parangipettai (dist Cuddalore)	13	Tiruvallur (dist Tiruvallur), Hindustan University (dist Kancheepuram)	12	Kancheepuram (dist Kancheepuram), Chembarambakkam (dist Tiruvallur), Ponneri (dist Tiruvallur), Tambaram (dist Chengalpattu), Ambattur (dist Tiruvallur)	11	Chidambaram (dist Cuddalore), Karaikal (dist Karaikal), Koratur (dist Tiruvallur), Thirupporur (dist Chengalpattu), Red Hills (dist Tiruvallur), Chidambaram Aws (dist Cuddalore)	10	Kelambakkam (dist Chengalpattu), Sriperumbudur (dist Kancheepuram), Perambur (dist Chennai), Anna Uty Arg (dist Chennai), Thamaraiappakkam (dist Tiruvallur), DGP Office (dist Chennai), Chennai(n) (dist Chennai)	9	Bhuvanagiri (dist Cuddalore), Chennai Ap (dist Chennai), Kollidam (dist Mayiladuthurai), Sirkali (dist Mayiladuthurai), Uthiramerur (dist Kancheepuram), Poondi (dist Tiruvallur), Gummidipoondi (dist Tiruvallur)	8	Thiruvallangadu (dist Tiruvallur), Cheyyur (dist Chengalpattu), Vembakkam (dist Tiruvannamalai), MGR Nagar (dist Chennai), Satyabhama Uty Arg (dist Chengalpattu), Ennore Aws (dist Tiruvallur), K.M.Koil (dist Cuddalore)	7	Walajabad (dist Kancheepuram), Anna University (dist Chennai), Tiruvallur (dist Tiruvallur), Cuddalore (dist Cuddalore), Poonamallee (dist Tiruvallur), Nannilam (dist Tiruvallur), Nagapattinam (dist Nagapattinam), Gingee (dist Villupuram)
CHIEF AMOUNT OF RAINFALL OF TAMILNADU & PUDUCHERRY [FROM 0830 IST OF 26-11-2021 TO 0830 IST OF 27-11-2021]																													
RAINFALL (IN 'CM')	STATIONS																												
20	Avadi (dist Tiruvallur)																												
18	Mahabalipuram (dist Chengalpattu) Chengalpattu (dist Chengalpattu) Cheyyur ARG (dist Chengalpattu)																												
17	Kattapakkam (dist Kancheepuram)																												
16	Thirukalukundram (dist Chengalpattu)																												
15	Maduranthagam (dist Chengalpattu), Cholavaram (dist Tiruvallur), Parangipettai (dist Cuddalore)																												
13	Tiruvallur (dist Tiruvallur), Hindustan University (dist Kancheepuram)																												
12	Kancheepuram (dist Kancheepuram), Chembarambakkam (dist Tiruvallur), Ponneri (dist Tiruvallur), Tambaram (dist Chengalpattu), Ambattur (dist Tiruvallur)																												
11	Chidambaram (dist Cuddalore), Karaikal (dist Karaikal), Koratur (dist Tiruvallur), Thirupporur (dist Chengalpattu), Red Hills (dist Tiruvallur), Chidambaram Aws (dist Cuddalore)																												
10	Kelambakkam (dist Chengalpattu), Sriperumbudur (dist Kancheepuram), Perambur (dist Chennai), Anna Uty Arg (dist Chennai), Thamaraiappakkam (dist Tiruvallur), DGP Office (dist Chennai), Chennai(n) (dist Chennai)																												
9	Bhuvanagiri (dist Cuddalore), Chennai Ap (dist Chennai), Kollidam (dist Mayiladuthurai), Sirkali (dist Mayiladuthurai), Uthiramerur (dist Kancheepuram), Poondi (dist Tiruvallur), Gummidipoondi (dist Tiruvallur)																												
8	Thiruvallangadu (dist Tiruvallur), Cheyyur (dist Chengalpattu), Vembakkam (dist Tiruvannamalai), MGR Nagar (dist Chennai), Satyabhama Uty Arg (dist Chengalpattu), Ennore Aws (dist Tiruvallur), K.M.Koil (dist Cuddalore)																												
7	Walajabad (dist Kancheepuram), Anna University (dist Chennai), Tiruvallur (dist Tiruvallur), Cuddalore (dist Cuddalore), Poonamallee (dist Tiruvallur), Nannilam (dist Tiruvallur), Nagapattinam (dist Nagapattinam), Gingee (dist Villupuram)																												

	<p>Spatial rainfall distribution during the past 24 hours ending 0830 IST of 27.11.21, depicted in map form, is given in <u>Fig.2</u>.</p> <p>(iii) <u>Significant rainfall (mm) during the period 0830 IST of 27.11.21 to 0030 IST of 28.11.21:</u></p> <p>Pamban – 114.0 (upto 2330 IST of 27.11.21) Ramanathapuram KVK – 88.0 Karaikal AWS – 67.5 Nagapattinam – 22.0 (upto 2330 IST of 27.11.21) Chidambaram AWS (Cuddalore district)– 44.5 Lalpet ARG (Cuddalore district) – 24.5 Thuvakudi ISRO AWS (Thiruchirapalli district) – 33.0 Chembarambakkam (Kanchipuram district) – 20.0 Chennai MRC Nagar ARG – 31.0 Chennai AWS – 27.5 Chennai Anna University ARG – 30.0 Chennai NIOT Pallikaranai ARG – 30.2 Meenambakkam ISRO AWS – 21.0</p>
Forecast for 24 hrs during 0830 IST of 27.11.21 to 0830 IST of 28.11.21	<p>Heavy to very heavy rain with isolated extremely heavy falls is likely over Tiruvallur and Ranipet districts of Tamil Nadu.</p> <p>Heavy to very heavy rain is likely to occur at a few places over Chennai, Kancheepuram, Chengalpattu, Villupuram, Tiruvannamalai, Vellore, Tirunelveli, Thoothukudi, Kanyakumari and Ramanathapuram districts of Tamil Nadu.</p> <p>Heavy rain is likely to occur at isolated places over Tiruchirapalli, Pudukottai, Perambalur, Ariyalur, Kallakurichi, Salem, Namakkal, Tiruppur, Erode, Coimbatore, Nilgiris, Thenkasi, Cuddalore, Mayiladuthurai, Nagapattinam, Tiruvarur and Thanjavur districts of Tamilnadu, Puducherry and Karaikal area.</p>
Impact expected	<ul style="list-style-type: none"> ✓ Low lying areas marooned ✓ Severe damages to crops ✓ Uprooting of trees ✓ Damage to formal / informal settlements ✓ Increase in water levels in rivers, lakes & reservoirs ✓ Inland / riverine flooding ✓ Damages to cattle ✓ Mudslides / landslides in hilly areas

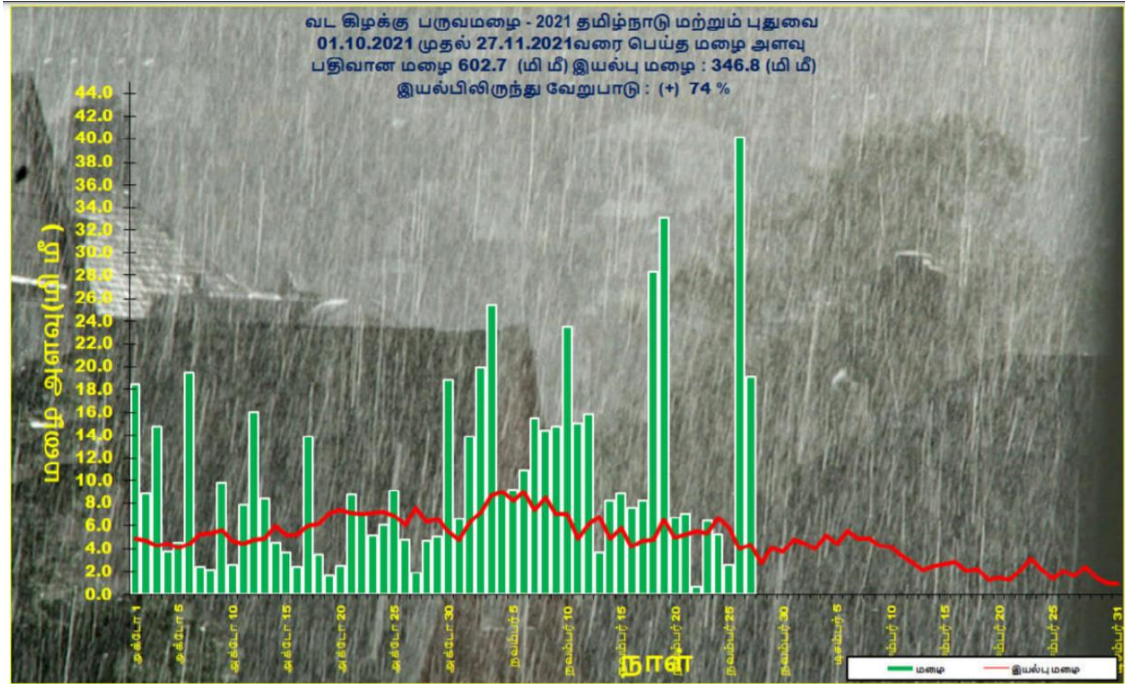


Fig.1a: Tamil Nadu subdivisional daily rainfall graph for the period 01st Oct to 27th Nov 2021

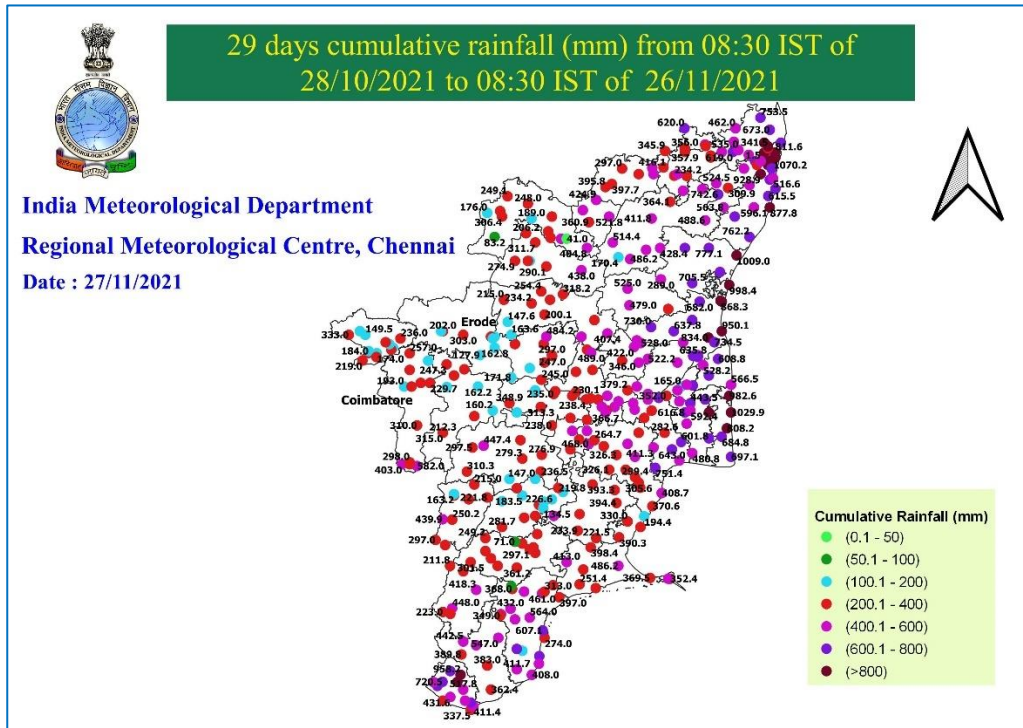


Fig.1b Cumulative rainfall during the past 29 days from 0830 IST of 28.10.21 to 0830 IST of 26.11.21

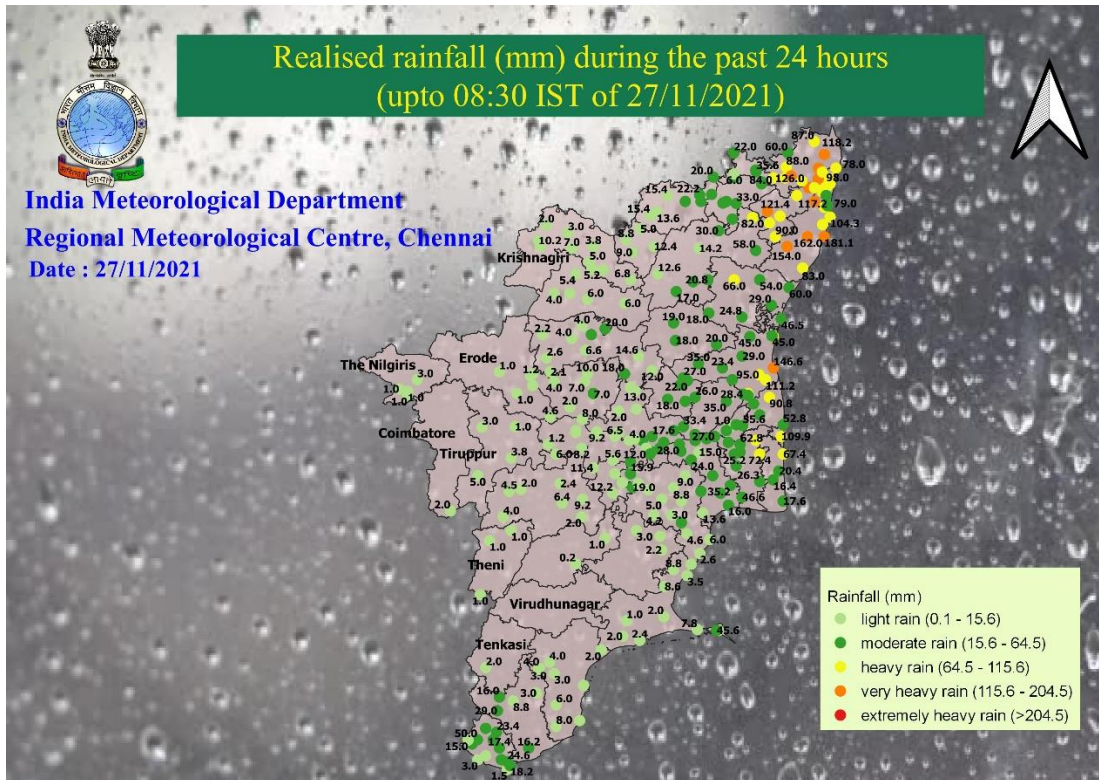


Fig.2 Rainfall during the past 24 hrs from 0830 IST of 26.11.21 to 0830 IST of 27.11.21

