

भारत सरकार  
भारतीय मौसम विज्ञान विभाग  
प्रादेशिक मौसमविज्ञान केन्द्र  
नं: 6, कालेज रोड, चेन्नै - 600006  
दूरभाष : 044- 28271951



GOVERNMENT OF INDIA  
INDIA METEOROLOGICAL DEPARTMENT  
**Regional Meteorological Centre**  
No. 6, College Road, Chennai-600006  
Phone: 044 - 28271951

### இந்திய அரசு

இந்திய வானிலை ஆய்வு துறை  
மண்டல வானிலை ஆய்வு மையம்  
6, கல்லூரி சாலை, சென்னை 600006 -

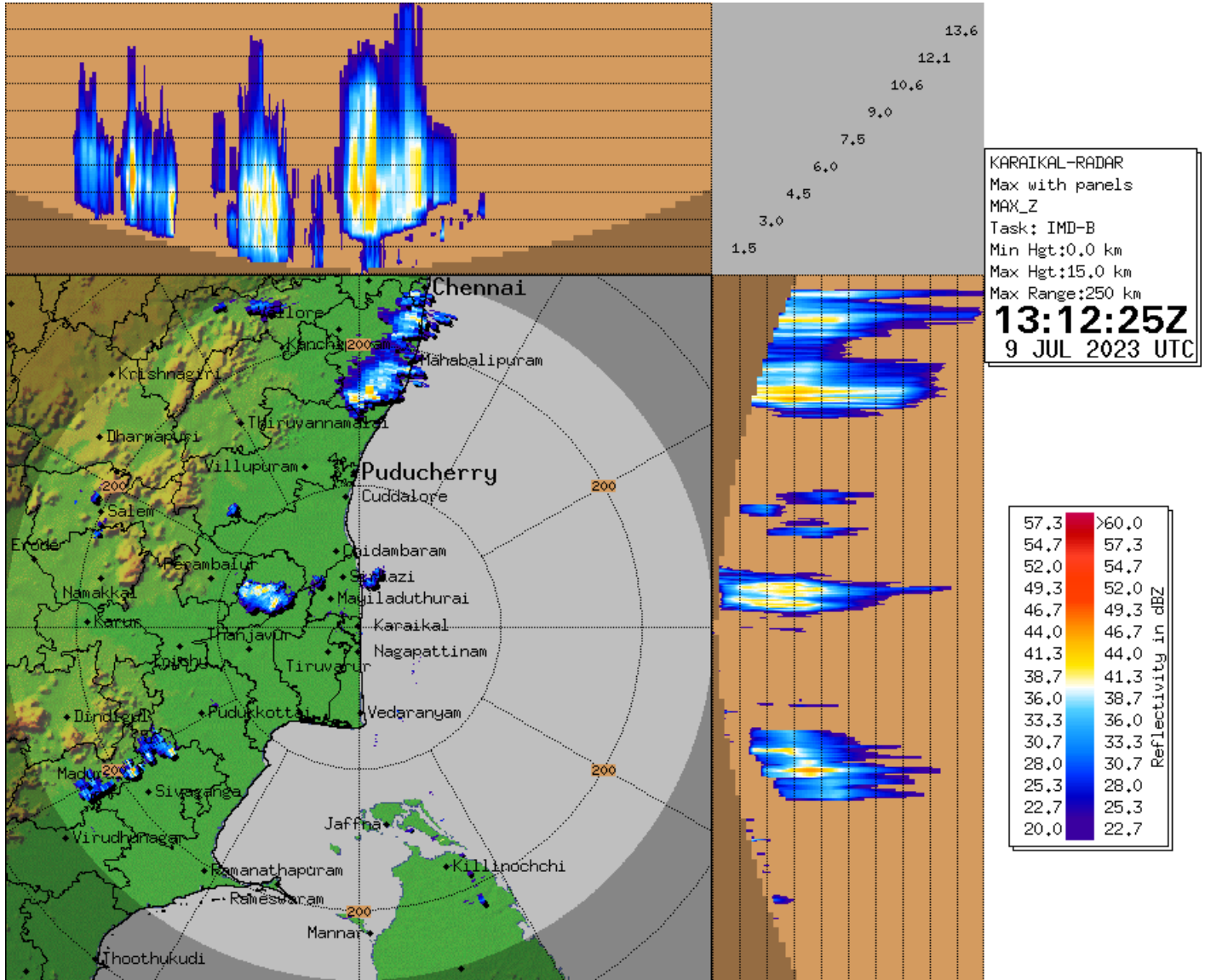
**DATE: 09-07-2023**

**Time of issue: 1900 Hrs IST**

Sub: Rain/Thunderstorm warning/Lightning warning

VALIDITY	SEVERE WEATHER PHENOMENA (VERY LIKELY/MOST LIKELY)	DISTRICT AFFECTED (ISOLATED/ A FEW/MANY PLACES)	IMPACT
0300 Hrs (UPTO 22:00 Hrs IST OF 09.07.2023)	Thunderstorm & lightning with Light/Moderate rain is very likely	Isolated places over <b>Thanjavur, Tiruvarur, Nagapattinam, Vellore, Ranipet, Tirupattur, Ariyalur, Perambalur, Kallakurichi, Virudhunagar, Madurai, Dindigul, Sivaganga, Pudukottai, Tiruvannamalai, Salem, Chennai, Chengalpattu, Tiruvallur and Kancheepuram</b> districts of Tamilnadu and <b>Karaikal</b> .	Water logging in some areas. Slippery roads in some areas. Traffic may be affected in some areas. Minor damage due to loose/unsecured structures

Duty Officer  
For Director In-charge  
Regional Weather Forecasting Centre  
Regional Meteorological Centre,  
Chennai.



## Thunderstorm & Lightning: Do's and Don'ts

### (i) If at home or work -

#### Preparation:

- ✓ Look for darkening skies and increased wind.
- ✓ If you hear thunder, you are close enough to be struck by lightning.
- ✓ Keep monitoring local media for updates and warning instructions.
- ✓ Stay indoors and avoid travel if possible.
- ✓ Close windows and doors, and secure objects outside your home (e.g. furniture, bins, etc.).
- ✓ Ensure that children and animals are inside.
- ✓ Unplug unnecessary electrical appliances (to isolate them from the main power supply which may conduct a power surge during a lightning storm).
- ✓ Remove tree timber or any other debris that may cause a flying accident.

#### Response:

- ✓ Avoid taking a bath or a shower, and stay away from running water. This is because lightning can
- ✓ travel along metal pipes. Keep away from doors, windows, fireplaces, stoves, bathtubs, or any other electrical conductors.
- ✓ Avoid using corded phones and other electrical equipment that can conduct lightning.

### (ii) If Outdoor -

#### Response:

- ✓ Go to safe shelter immediately – avoid metal structures and constructions with metal sheeting.
- ✓ Ideally, find shelter in a low-lying area and make sure that the spot chosen is not likely to flood.
- ✓ Crouch down with feet together and head down to make yourself a smaller target.
- ✓ Hair standing up on the back of your neck could indicate that lightning is imminent.
- ✓ Do not lie flat on the ground; this will make a bigger target.
- ✓ Keep away from all utility lines (phone, power, etc.), metal fences, trees, and hilltops.
- ✓ Do not take shelter under trees as these conduct electricity.
- ✓ Rubber-soled shoes and car tyres do not offer protection from lightning.

(iii) If travelling -

Response:

- ✓ Get off bicycles, motorcycles or farm vehicles that may attract lightning.
- ✓ Get to a safe shelter.
- ✓ If boating or swimming, get to land as quickly as possible and take shelter.
- ✓ During a storm, remain in your vehicle until help arrives or the storm has passed (the metal roof will provide protection if you are not touching metal inside); windows should be up; park away from trees and power lines.

(iv) If struck by lightning -

Treatment:

- ✓ Take the person who is struck by lightning to a hospital.
- ✓ If possible, give basic First Aid.
- ✓ People struck by lightning carry no electrical charge and can be handled safely.
- ✓ Check for broken bones, loss of hearing and eyesight.
- ✓ A victim of a lightning strike can suffer varying degrees of burn. Check the impact point and where the electricity left the body for injury marks.

(pl visit <https://ndma.gov.in/Resources/awareness/lightning/visuals>)