

**இந்திய அரசு**

இந்திய வானிலை ஆய்வு துறை  
மண்டல வானிலை ஆய்வு மையம்  
6, கல்லூரி சாலை, சென்னை-600006 -  
தொலைபேசி : **044- 28271951**

**GOVERNMENT OF INDIA**

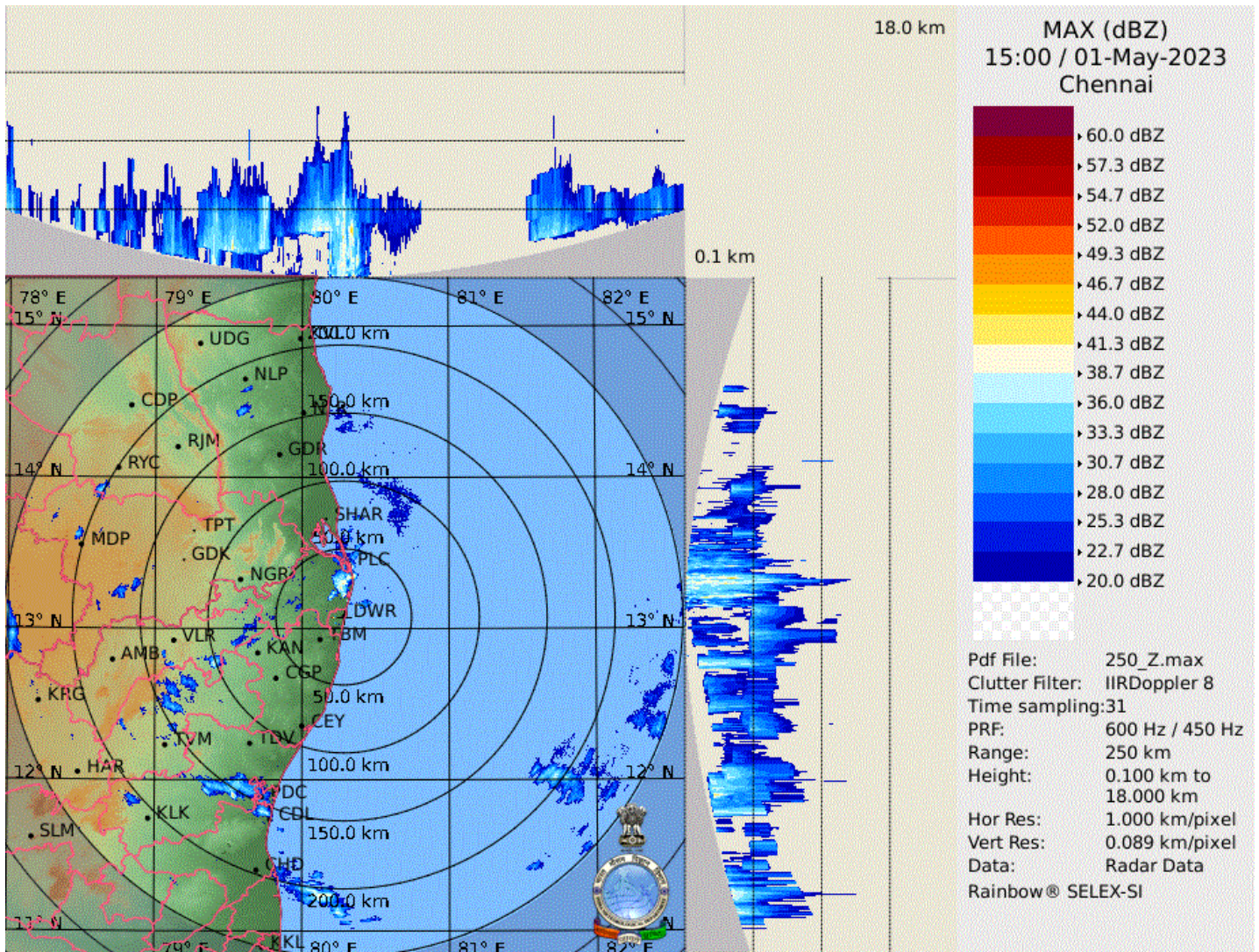
INDIA METEOROLOGICAL DEPARTMENT  
Regional Meteorological Centre  
No. 6, College Road, Chennai-600006  
Phone: **044- 28271951**

**DATE: 01-05-2023****Time of issue: 20:45 Hrs IST****Sub: Rain/Thunderstorm warning/Lightning warning**

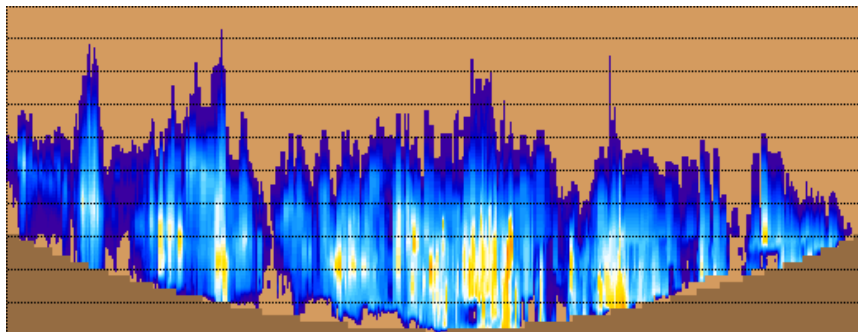
VALIDITY	SEVERE WEATHER PHENAMENA (VERY LIKELY/MOST LIKELY )	DISTRICT AFFECTED (ISOLATED/ A FEW/MANY PLACES)	IMPACT
03 Hrs (UPTO 23:45 IST OF 01.05.2023)	Moderate Thunderstorm and lightning with Moderate rain is very likely.	Isolated places over <b>Nilgiris, Erode, Coimbatore, Tiruppur, Theni, Dindigul, Madurai, Virudhunagar, Thenkasi, Ramanathapuram, Kanyakumari, Cuddalore, Mayiladuthurai, Nagapattinam, Thiruvarur, Thanjavur, Pudukottai, Tiruchirapalli, Karur, Ariyalur, Perambalur, Namakkal, Salem, Dharmapuri, Krishnagiri, Tirupattur, Vellore, Ranipet, Thiruvallur, Chennai, Tiruvannamalai, Villupuram and Kallakurichi</b> districts of Tamilnadu and <b>Puducherry&amp;Karaikal area.</b>	Water logging in some areas. Slippery roads in some areas. Traffic may be affected in some areas. Minor damage to loose/unsecured structures.

Duty Officer  
For Director In-charge

Regional Weather Forecasting Centre  
Regional Meteorological Centre,  
Chennai.

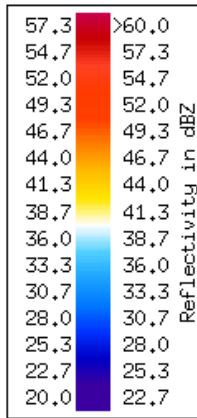
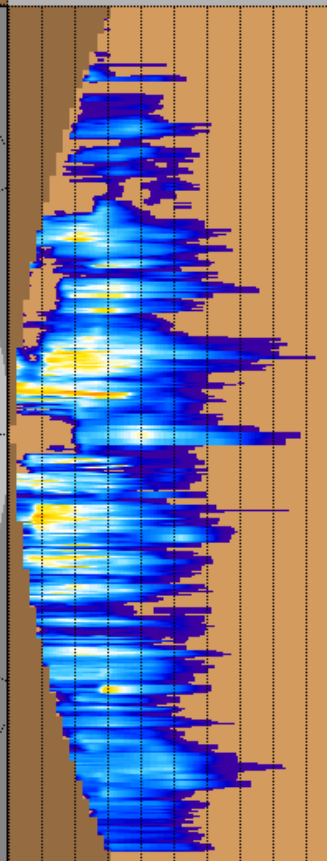
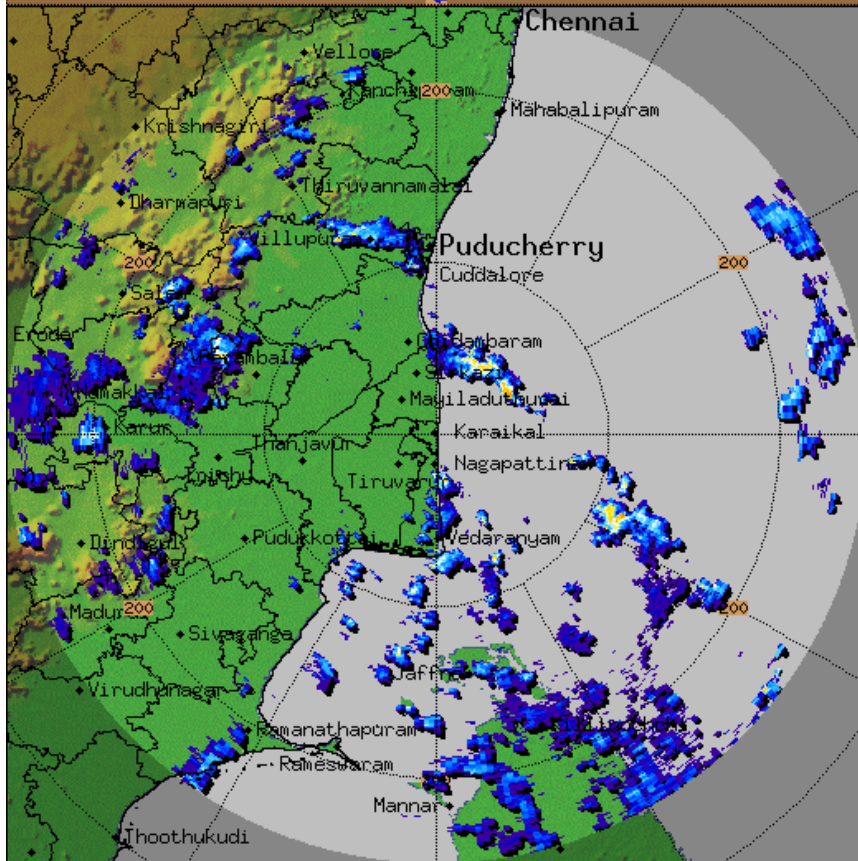


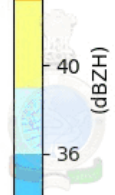
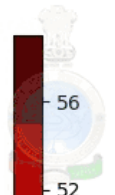




13.6  
12.1  
10.6  
9.0  
7.5  
6.0  
4.5  
3.0  
1.5

KARAIKAL-RADAR  
Max with panels  
MAX\_Z  
Task: IMD-B  
Min Hgt:0.0 km  
Max Hgt:15.0 km  
Max Range:250 km  
**15:02:33Z**  
**1 MAY 2023 UTC**





z (km)

20

15

10

5

12.0

11.5

11.0

10.5

10.0

9.5

9.0

8.5

8.0

Lat

74.5

75.0

75.5

76.0

76.5

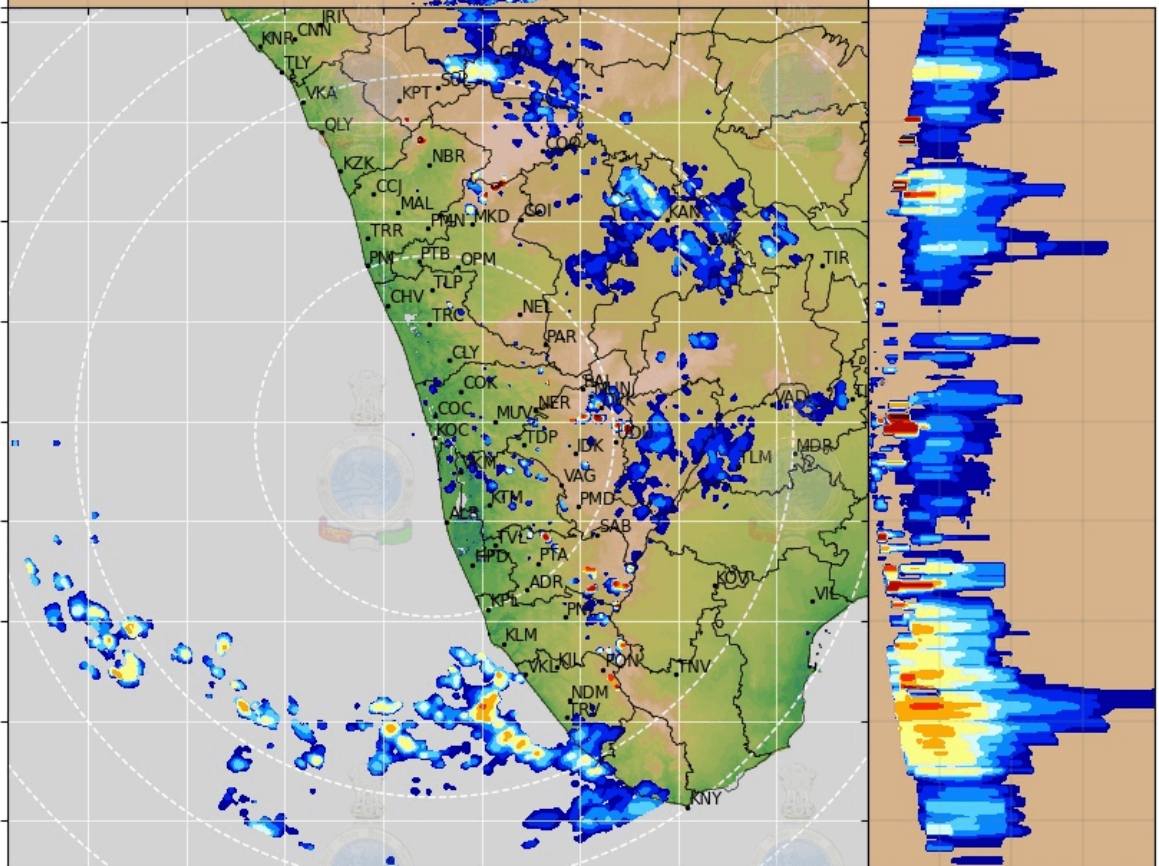
77.0

77.5

78.0

Lon

IMD-DWR-KOCHI  
Product:MAX(DBZ)  
Date:01/05/2023  
Time:14:41:17 UTC  
Range:240 Km  
PRF:450, 600 Hz



z (km)

(dBZH)

56

52

48

44

40

36

32

28

24

20

## Thunderstorm & Lightning: Do's and Don'ts

### (i) If at home or work -

#### Preparation:

- ✓ Look for darkening skies and increased wind.
- ✓ If you hear thunder, you are close enough to be struck by lightning.
- ✓ Keep monitoring local media for updates and warning instructions.
- ✓ Stay indoors and avoid travel if possible.
- ✓ Close windows and doors, and secure objects outside your home (e.g. furniture, bins, etc.).
- ✓ Ensure that children and animals are inside.
- ✓ Unplug unnecessary electrical appliances (to isolate them from the main power supply which may conduct a power surge during a lightning storm).
- ✓ Remove tree timber or any other debris that may cause a flying accident.

#### Response:

- ✓ Avoid taking a bath or a shower, and stay away from running water. This is because lightning can
- ✓ travel along metal pipes. Keep away from doors, windows, fireplaces, stoves, bathtubs, or any other electrical conductors.
- ✓ Avoid using corded phones and other electrical equipment that can conduct lightning.

### (ii) If Outdoor -

#### Response:

- ✓ Go to safe shelter immediately – avoid metal structures and constructions with metal sheeting.
- ✓ Ideally, find shelter in a low-lying area and make sure that the spot chosen is not likely to flood.
- ✓ Crouch down with feet together and head down to make yourself a smaller target.
- ✓ Hair standing up on the back of your neck could indicate that lightning is imminent.
- ✓ Do not lie flat on the ground; this will make a bigger target.

- ✓ Keep away from all utility lines (phone, power, etc.), metal fences, trees, and hilltops.
- ✓ Do not take shelter under trees as these conduct electricity.
- ✓ Rubber-soled shoes and car tyres do not offer protection from lightning.

### (iii) If travelling -

#### Response:

- ✓ Get off bicycles, motorcycles or farm vehicles that may attract lightning.
- ✓ Get to a safe shelter.
- ✓ If boating or swimming, get to land as quickly as possible and take shelter.
- ✓ During a storm, remain in your vehicle until help arrives or the storm has passed (the metal roof will provide protection if you are not touching metal inside); windows should be up; park away from trees and power lines.

### (iv) If struck by lightning -

#### Treatment:

- ✓ Take the person who is struck by lightning to a hospital.
- ✓ If possible, give basic First Aid.
- ✓ People struck by lightning carry no electrical charge and can be handled safely.
- ✓ Check for broken bones, loss of hearing and eyesight.
- ✓ A victim of a lightning strike can suffer varying degrees of burn. Check the impact point and where the electricity left the body for injury marks.

(pl visit <https://ndma.gov.in/Resources/awareness/lightning/visuals>)