

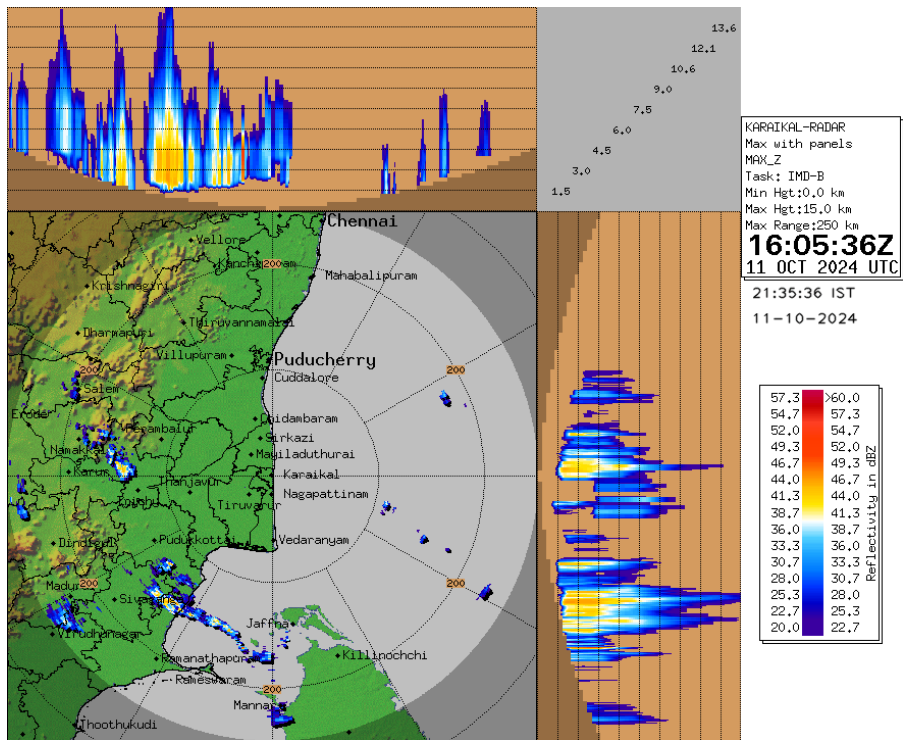
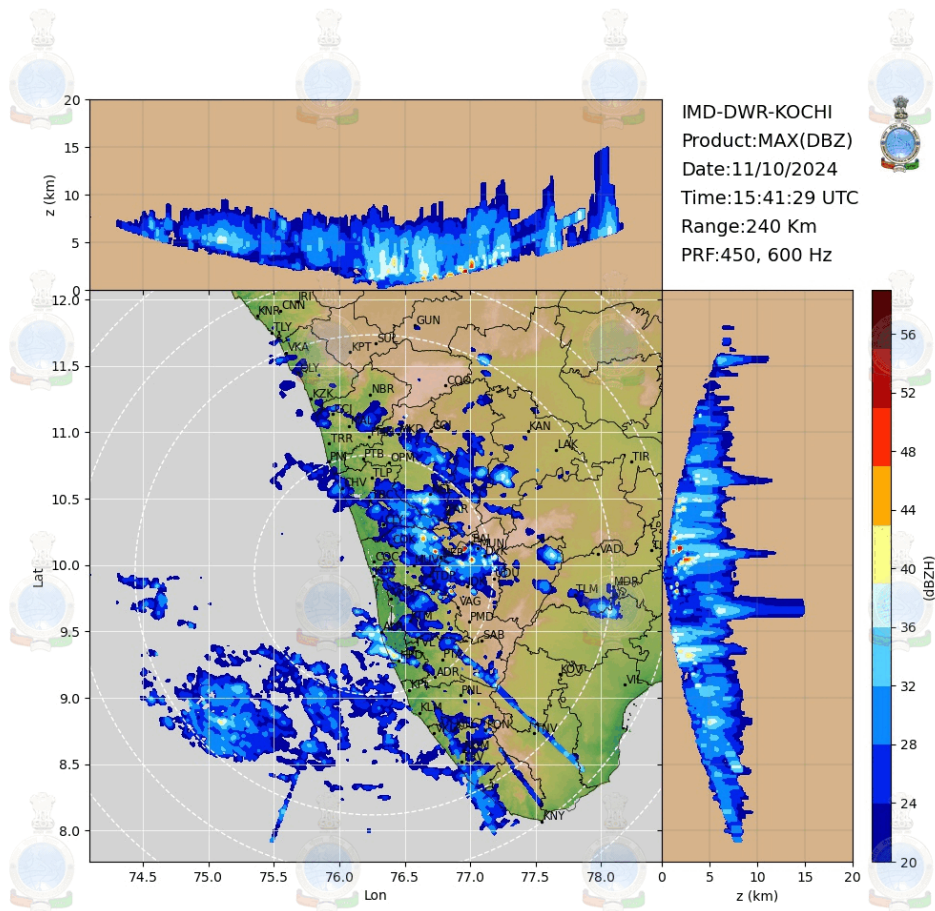
	<b>இந்திய அரசு</b> இந்தியவானிலைஆய்வுதறை மண்டலவானிலைஆய்வுமையம் 6, கல்லூரிசாலை, சென்னை 600006 <b>தொலைபேசி: 044- 28271951</b>		<b>GOVERNMENT OF INDIA</b> <b>INDIA METEOROLOGICAL DEPARTMENT</b> <b>Regional Meteorological Centre</b> <b>No. 6, College Road,</b> <b>Chennai-600006</b> <b>Phone: 044- 28271951</b>
---	---	---	--

<b>DATE: 11-10-2024</b>	<b>Time of Issue: 22:00 hrs. IST</b>
-------------------------	--------------------------------------

**Sub: Rain/Thunderstorm warning/Lightning warning**

VALIDITY	WEATHER PHENOMENA (LIKELY/VERY LIKELY/MOST LIKELY)	DISTRICT AFFECTED (ISOLATED/A FEW/MANY/MOST PLACES)	IMPACT
3 Hrs. (upto 01:00 hrs. IST of 12-10-2024)	Moderate Thunderstorm and lightning with Moderate rain is likely.	At isolated places over <b>NAMAKKAL, THIRUCHIRAPALLI, KARUR, SIVAGANGAI and RAMANATHAPURAM</b> districts of Tamilnadu.	Water logging in some areas. Slippery roads in some areas. Traffic may be affected in some areas. Minor damage due to loose/unsecured structures.
	Light Thunderstorm and lightning with Light to moderate rain is likely.	At isolated places over <b>KANYAKUMARI, THIRUNELVELI, TENKASI, VIRUDHUNAGAR, THENI, DINDIGUL, MADURAI, COIMBATORE, THIRUPPUR, NILGIRIS, ERODE, SALEM, PUDUKKOTTAI, KRISHNAGIRI, THIRUVALLUR and CHENNAI</b> districts of Tamilnadu.	

Duty Officer  
 For Director In-Charge  
 Regional Weather Forecasting Centre  
 Regional Meteorological Centre, Chennai





2024/10/11

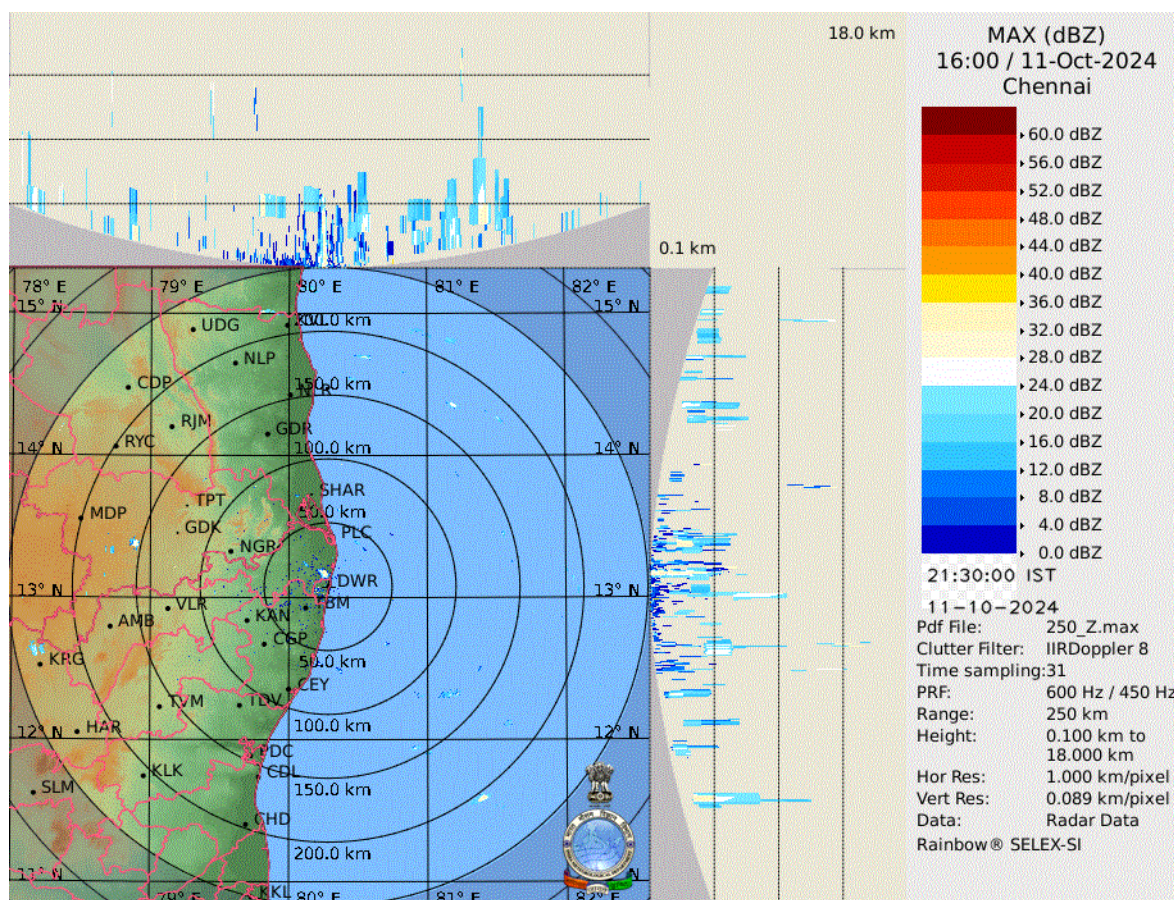
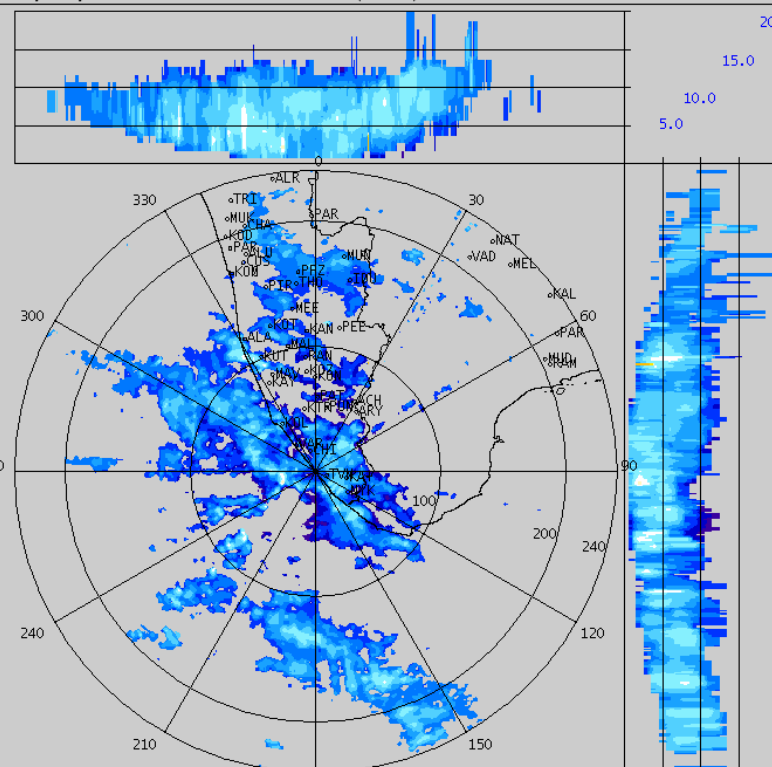
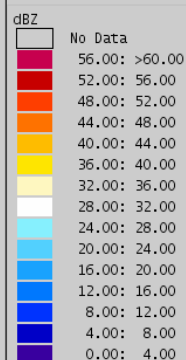
15:47:33 (UTC)

21:17:33 IST 11-10-2024

MAX(Z)

DWR CDWRTERLS  
( 8.5374N , 76.8657E , 27.0000 mts )

Height : 20.0 Km  
Layer Spacing : 1.0 Km  
Z (Lo, Hi) : 0.0, 70.0 dBZ  
Grid size : 1 Km  
Display Range : 240 Km  
Display Res : 0.9 Km/Pix  
DDR Enable : Yes  
Scan Elev (Lo, Hi) : 0.5, 21.0 Deg  
PRF (Lo, Hi) : 450, 600 Hz  
Scan Res : 150 mts  
Scan RPM : 1.5  
Log Threshold : 8 dB  
DTP : 57  
Pulse Width : 1.0 micro sec  
Clutter Filter : OFF  
SQI : 0.25  
CSR : 20 dB  
Scan Range : 240 Km  
Preprocessings : CL  
Filters : NONE



## Thunderstorm & Lightning: Do's and Don'ts

### (i) If at home or work –

#### Preparation:

- ✓ Look for darkening skies and increased wind.
- ✓ If you hear thunder, you are close enough to be struck by lightning.
- ✓ Keep monitoring local media for updates and warning instructions.
- ✓ Stay indoors and avoid travel if possible.
- ✓ Close windows and doors, and secure objects outside your home (e.g. furniture, bins, etc.).
- ✓ Ensure that children and animals are inside.
- ✓ Unplug unnecessary electrical appliances (to isolate them from the main power supply which may conduct a power surge during a lightning storm).
- ✓ Remove tree timber or any other debris that may cause a flying accident.

#### Response:

- ✓ Avoid taking a bath or a shower, and stay away from running water. This is because lightning can travel along metal pipes. Keep away from doors, windows, fireplaces, stoves, bathtubs, or any other electrical conductors.
- ✓ Avoid using corded phones and other electrical equipment that can conduct lightning.

### (ii) If Outdoor -

#### Response:

- ✓ Go to safe shelter immediately – avoid metal structures and constructions with metal sheeting.
- ✓ Ideally, find shelter in a low-lying area and make sure that the spot chosen is not likely to flood.
- ✓ Crouch down with feet together and head down to make yourself a smaller target.
- ✓ Hair standing up on the back of your neck could indicate that lightning is imminent.
- ✓ Do not lie flat on the ground; this will make a bigger target.
- ✓ Keep away from all utility lines (phone, power, etc.), metal fences, trees, and hilltops.
- ✓ Do not take shelter under trees as these conduct electricity.
- ✓ Rubber-soled shoes and car tyres do not offer protection from lightning.

### (iii) If travelling -

#### Response:

- ✓ Get off bicycles, motorcycles or farm vehicles that may attract lightning.
- ✓ Get to a safe shelter.
- ✓ If boating or swimming, get to land as quickly as possible and take shelter.
- ✓ During a storm, remain in your vehicle until help arrives or the storm has passed (the metal roof will provide protection if you are not touching metal inside); windows should be up; park away from trees and power lines.

### (iv) If struck by lightning -

#### Treatment:

- ✓ Take the person who is struck by lightning to a hospital.
- ✓ If possible, give basic First Aid.
- ✓ People struck by lightning carry no electrical charge and can be handled safely.
- ✓ Check for broken bones, loss of hearing and eyesight.
- ✓ A victim of a lightning strike can suffer varying degrees of burn. Check the impact point and where the electricity left the body for injury marks.

(pl visit <https://ndma.gov.in/Resources/awareness/lightning/visuals>)