

| | | | |
|---|--|---|--|
|  | இந்திய அரசு இந்தியவானிலைஆய்வுதுறை மண்டலவானிலைஆய்வுமையம் 6, கல்லூரிசாலை, சென்னை 600006 தொலைபேசி: 044- 28271951 |  | GOVERNMENT OF INDIA INDIA METEOROLOGICAL DEPARTMENT Regional Meteorological Centre No. 6, College Road, Chennai-600006 Phone: 044- 28271951 |
|---|--|---|--|

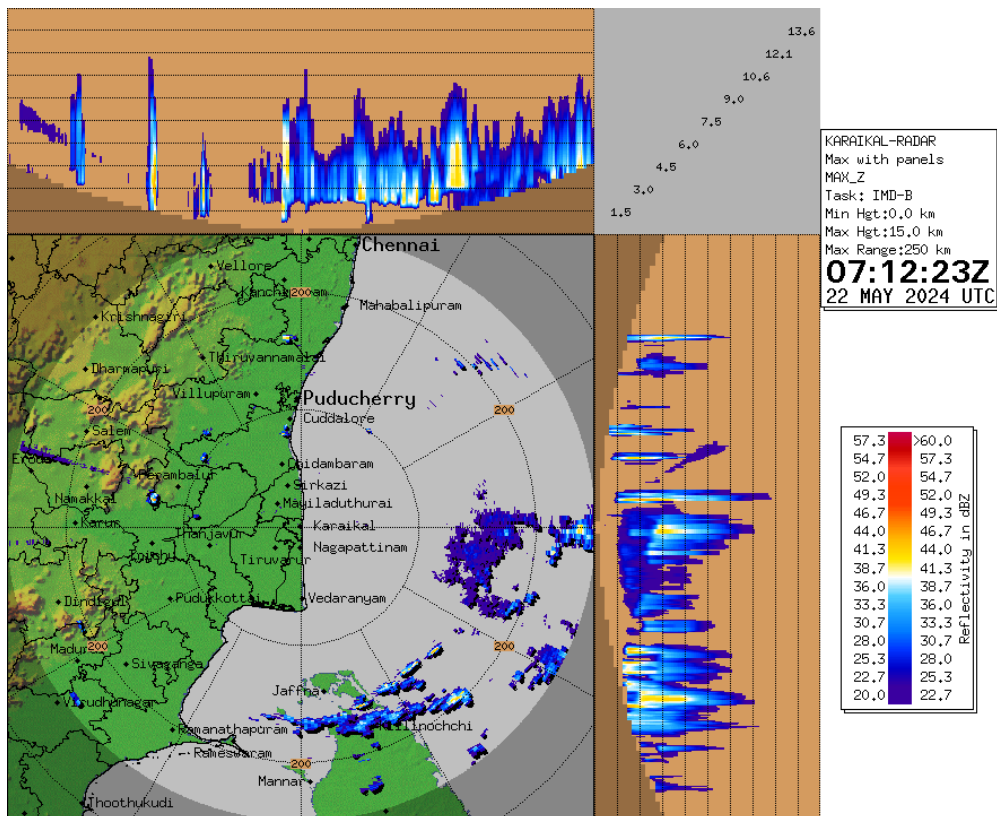
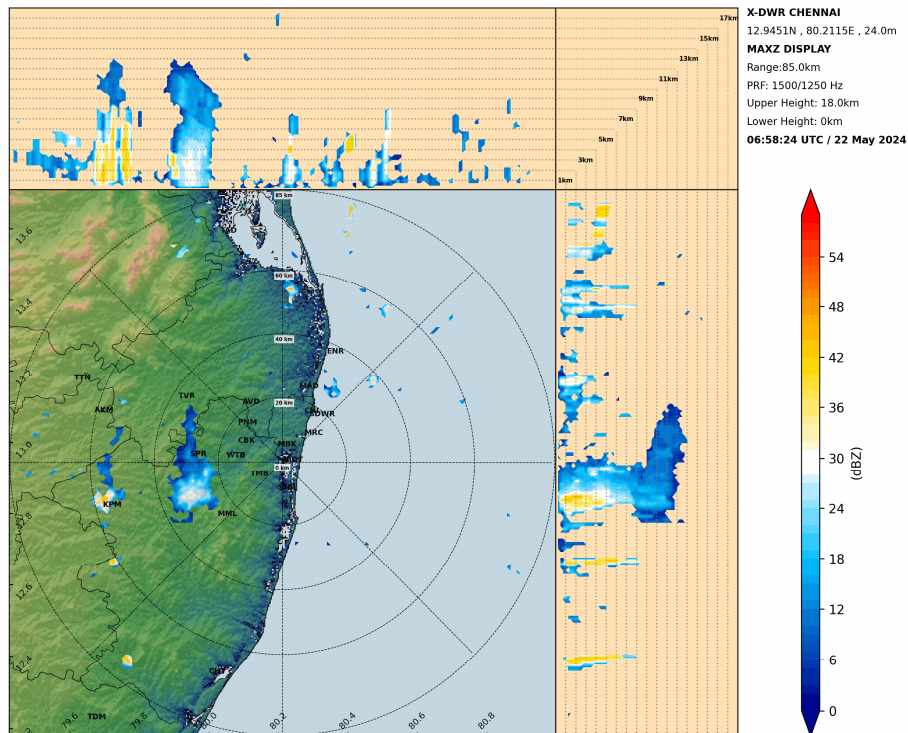
| | |
|-------------------------|--------------------------------------|
| DATE: 22-05-2024 | Time of Issue: 13:00 hrs. IST |
|-------------------------|--------------------------------------|

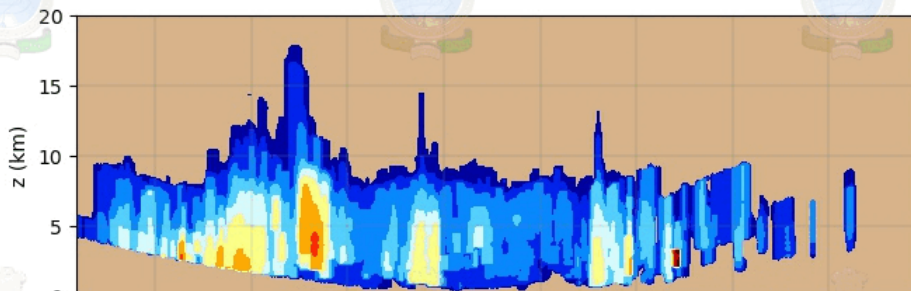
Sub: Rain/Thunderstorm warning/Lightning warning

| VALIDITY | WEATHER PHENOMENA (LIKELY/VERY LIKELY/MOST LIKELY) | DISTRICT AFFECTED (ISOLATED/A FEW/MANY/MOST PLACES) | IMPACT |
|---|---|--|--|
| Upto 16:00 hrs. IST of 22.05.2024 | Moderate Thunderstorm & lightning with Moderate Rain is very likely | Isolated places over Chengalpattu, Chennai, Kanchipuram, Thiruvallur, Viluppuram, Cuddalore, Perambalur, Thiruchirapalli, Coimbatore, Thiruppur, Theni, Thirunelveli and Kanyakumari districts of Tamilnadu and Puducherry . | Water logging in some areas. Slippery roads in some areas. Traffic may be affected in some areas. Minor damage due to loose/unsecured structures. |
| | Light Thunderstorm & lightning with Light Rain is likely | Isolated places over Ranipettai, Kallakurichy, Ariyalur, Dindugul, Madurai, Virudhunagar districts of Tamilnadu | Nil |

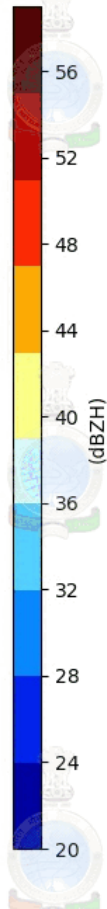
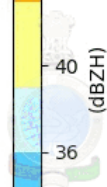
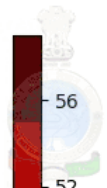
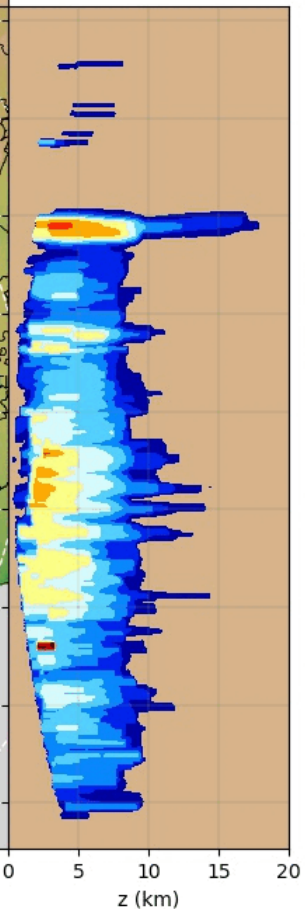
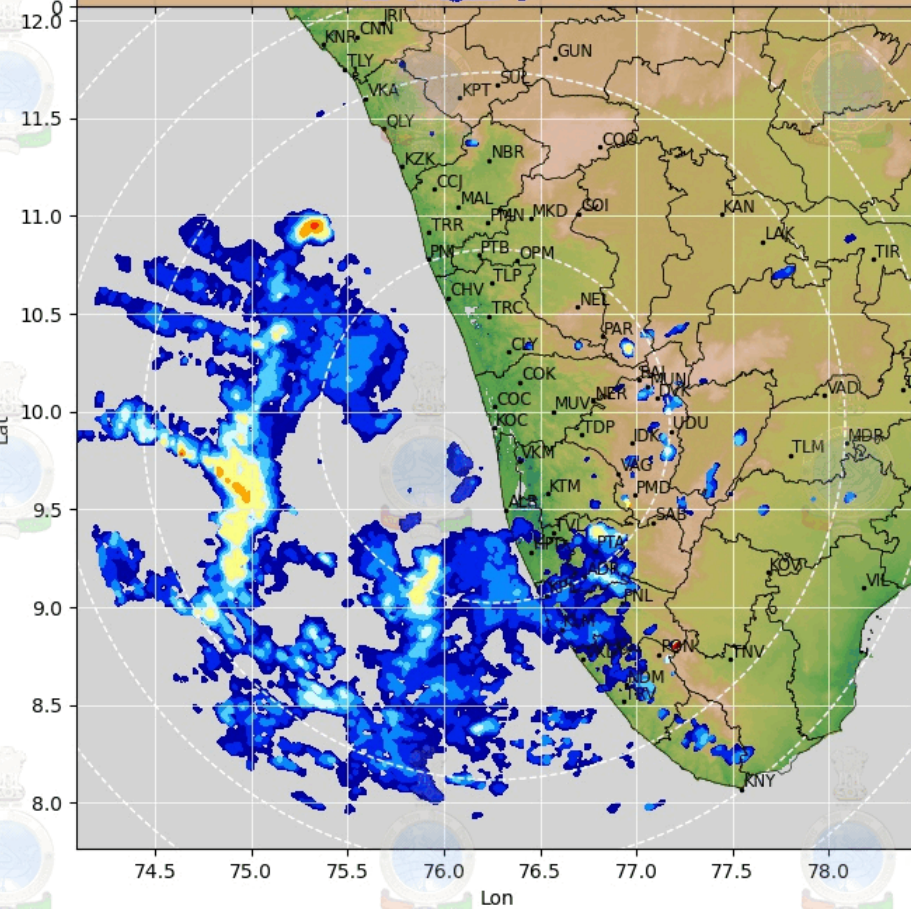
Duty Officer
For Director In-Charge

Regional Weather Forecasting Centre
Regional Meteorological Centre
Chennai





IMD-DWR-KOCHI
Product:MAX(DBZ)
Date:22/05/2024
Time:07:09:33 UTC
Range:240 Km
PRF:450, 600 Hz



Thunderstorm & Lightning: Do's and Don'ts

(i) If at home or work -

Preparation:

- ✓ Look for darkening skies and increased wind.
- ✓ If you hear thunder, you are close enough to be struck by lightning.
- ✓ Keep monitoring local media for updates and warning instructions.
- ✓ Stay indoors and avoid travel if possible.
- ✓ Close windows and doors, and secure objects outside your home (e.g. furniture, bins, etc.).
- ✓ Ensure that children and animals are inside.
- ✓ Unplug unnecessary electrical appliances (to isolate them from the main power supply which may conduct a power surge during a lightning storm).
- ✓ Remove tree timber or any other debris that may cause a flying accident.

Response:

- ✓ Avoid taking a bath or a shower, and stay away from running water. This is because lightning can travel along metal pipes. Keep away from doors, windows, fireplaces, stoves, bathtubs, or any other electrical conductors.
- ✓ Avoid using corded phones and other electrical equipment that can conduct lightning.

(ii) If Outdoor -

Response:

- ✓ Go to safe shelter immediately – avoid metal structures and constructions with metal sheeting.
- ✓ Ideally, find shelter in a low-lying area and make sure that the spot chosen is not likely to flood.
- ✓ Crouch down with feet together and head down to make yourself a smaller target.
- ✓ Hair standing up on the back of your neck could indicate that lightning is imminent.
- ✓ Do not lie flat on the ground; this will make a bigger target.
- ✓ Keep away from all utility lines (phone, power, etc.), metal fences, trees, and hilltops.
- ✓ Do not take shelter under trees as these conduct electricity.
- ✓ Rubber-soled shoes and car tyres do not offer protection from lightning.

(iii) If travelling -

Response:

- ✓ Get off bicycles, motorcycles or farm vehicles that may attract lightning.
- ✓ Get to a safe shelter.
- ✓ If boating or swimming, get to land as quickly as possible and take shelter.
- ✓ During a storm, remain in your vehicle until help arrives or the storm has passed (the metal roof will provide protection if you are not touching metal inside); windows should be up; park away from trees and power lines.

(iv) If struck by lightning -

Treatment:

- ✓ Take the person who is struck by lightning to a hospital.
- ✓ If possible, give basic First Aid.
- ✓ People struck by lightning carry no electrical charge and can be handled safely.
- ✓ Check for broken bones, loss of hearing and eyesight.
- ✓ A victim of a lightning strike can suffer varying degrees of burn. Check the impact point and where the electricity left the body for injury marks.

(pl visit <https://ndma.gov.in/Resources/awareness/lightning/visuals>)