

	<p><b>இந்திய அரசு</b> இந்தியவானிலைஆய்வுதுறை மண்டலவானிலைஆய்வுமையம் 6, கல்லூரிசாலை, சென்னை 600006 தொலைபேசி: 044- 28271951</p>		<p><b>GOVERNMENT OF INDIA</b> <b>INDIA METEOROLOGICAL DEPARTMENT</b> <b>Regional Meteorological Centre</b> <b>No. 6, College Road,</b> <b>Chennai-600006</b> <b>Phone: 044- 28271951</b></p>
---	---	---	--

DATE: 24-05-2024	Time of Issue:13:00 hrs. IST
------------------	------------------------------

**Sub: Rain/Thunderstorm warning/Lightning warning**

VALIDITY	WEATHER PHENOMENA (LIKELY/VERY LIKELY/MOST LIKELY)	DISTRICT AFFECTED (ISOLATED/A FEW/MANY/MOST PLACES)	IMPACT
Upto 16:00 hrs. IST of 24.05.2024	Moderate Thunderstorm & lightning with <b>Moderate Rain</b> is very likely	Isolated places over <b>Salem, Dharmapuri, Villupuram and Pudukkottai</b> districts of Tamilnadu	Water logging in some areas.  Slippery roads in some areas.  Traffic may be affected in some areas.  Minor damage due to loose/unsecured structures.
	Light Thunderstorm & lightning with <b>Light Rain</b> is very likely	Isolated places over <b>Nilgiris, Coimbatore, Tirupur, Erode, Kanyakumari, Tirunelveli, Thoothukudi, Sivaganga and Namakkal</b> districts of Tamilnadu	Nil

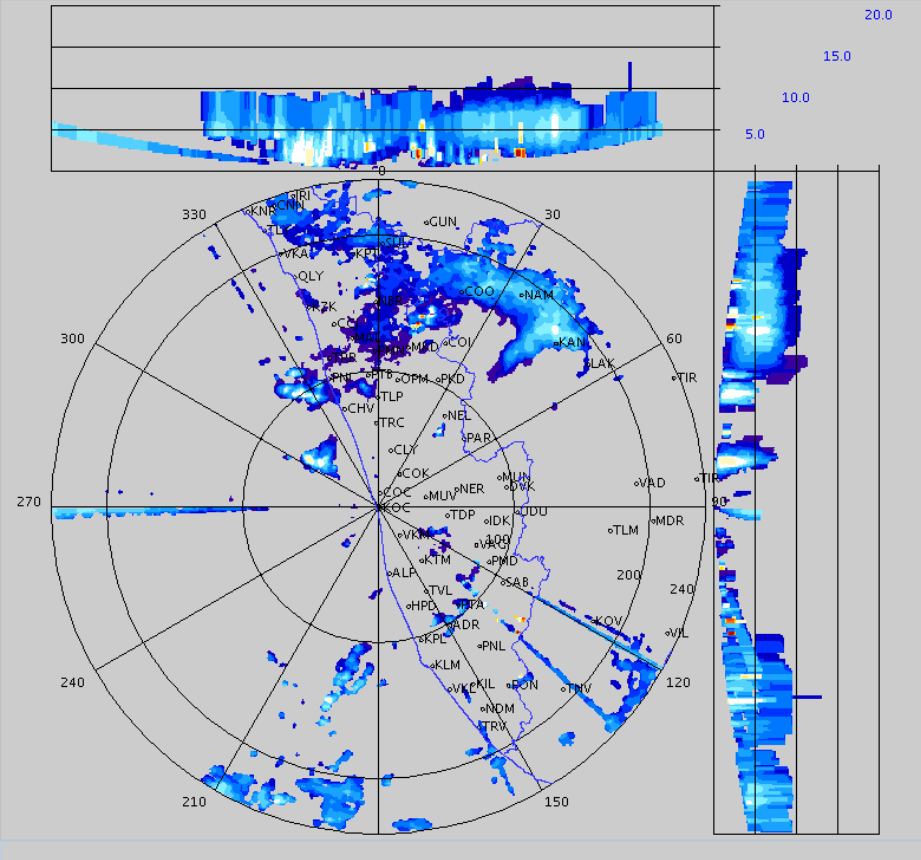
Duty Officer  
For Director In-Charge  
Regional Weather Forecasting Centre  
Regional Meteorological Centre  
Chennai

2024/05/24

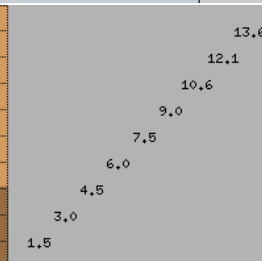
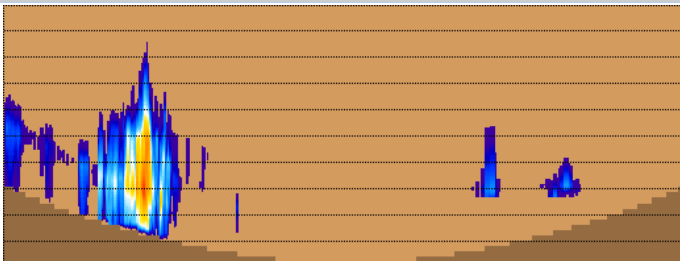
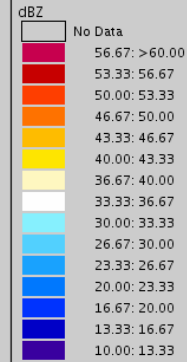
07:37:45 (UTC)

MAX(Z)

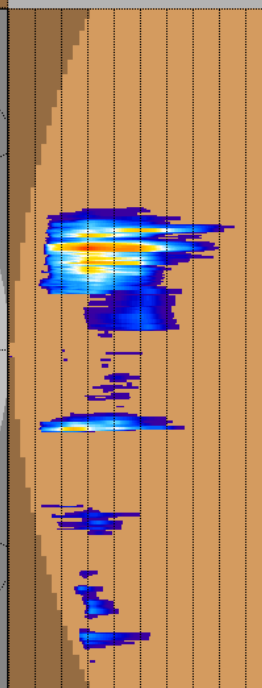
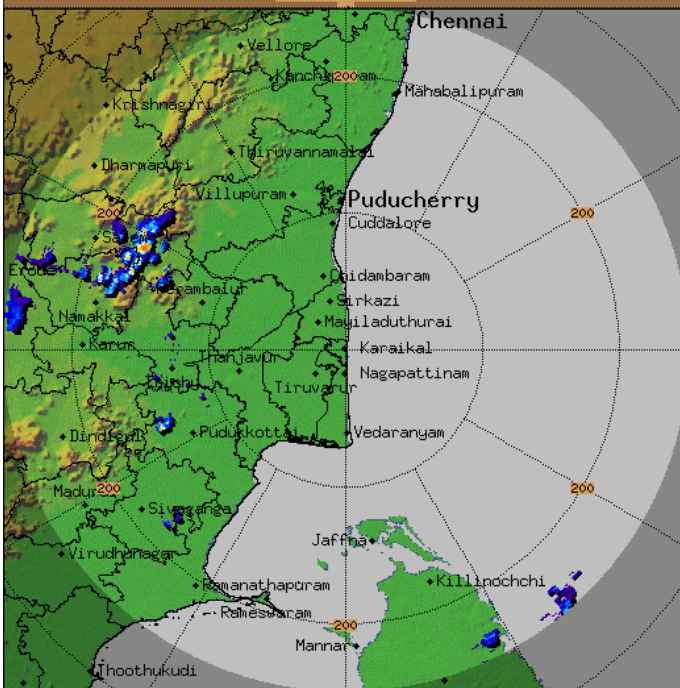
DWR KOCHI  
(9.9263N, 76.2622E, 30.0000 mts)



Height : 20.0 Km  
Layer Spacing : 0.2 Km  
Z (Lo, Hi) : -31.5, 90.0 dBZ  
Grid size : 1 Km  
Display Range : 240 Km  
Display Res : 0.9 Km/Pix  
DDR Enable : Yes  
Scan Elev (Lo, Hi) : 0.2, 21.0 Deg  
PRF (Lo, Hi) : 450, 600 Hz  
Scan Res : 300 mts  
Scan RPM : 2.0  
Log Threshold : 3 dB  
DTP : 42  
Pulse Width : 1.0 micro sec  
Clutter Filter : IIR-HP(36.0 Hz)  
SQI : 0.25  
CSR : 20 dB  
Scan Range : 240 Km  
Preprocessings : NONE  
Filters : OL  
Applied To : Z,V



KARAİKAL-RADAR  
Max with panels  
MAX\_Z  
Task: IMD-B  
Min Hgt:0.0 km  
Max Hgt:15.0 km  
Max Range:250 km  
**07:52:22Z**  
24 MAY 2024 UTC



57.3 : >60.0  
54.7 : 57.3  
52.0 : 54.7  
49.3 : 52.0  
46.7 : 49.3  
44.0 : 46.7  
41.3 : 44.0  
38.7 : 41.3  
36.0 : 38.7  
33.3 : 36.0  
30.7 : 33.3  
28.0 : 30.7  
25.3 : 28.0  
22.7 : 25.3  
20.0 : 22.7  
Reflectivity in dBZ

## Thunderstorm & Lightning: Do's and Don'ts

### (i) If at home or work -

#### Preparation:

- ✓ Look for darkening skies and increased wind.
- ✓ If you hear thunder, you are close enough to be struck by lightning.
- ✓ Keep monitoring local media for updates and warning instructions.
- ✓ Stay indoors and avoid travel if possible.
- ✓ Close windows and doors, and secure objects outside your home (e.g. furniture, bins, etc.).
- ✓ Ensure that children and animals are inside.
- ✓ Unplug unnecessary electrical appliances (to isolate them from the main power supply which may conduct a power surge during a lightning storm).
- ✓ Remove tree timber or any other debris that may cause a flying accident.

#### Response:

- ✓ Avoid taking a bath or a shower, and stay away from running water. This is because lightning can travel along metal pipes. Keep away from doors, windows, fireplaces, stoves, bathtubs, or any other electrical conductors.
- ✓ Avoid using corded phones and other electrical equipment that can conduct lightning.

### (ii) If Outdoor -

#### Response:

- ✓ Go to safe shelter immediately – avoid metal structures and constructions with metal sheeting.
- ✓ Ideally, find shelter in a low-lying area and make sure that the spot chosen is not likely to flood.
- ✓ Crouch down with feet together and head down to make yourself a smaller target.
- ✓ Hair standing up on the back of your neck could indicate that lightning is imminent.
- ✓ Do not lie flat on the ground; this will make a bigger target.
- ✓ Keep away from all utility lines (phone, power, etc.), metal fences, trees, and hilltops.
- ✓ Do not take shelter under trees as these conduct electricity.
- ✓ Rubber-soled shoes and car tyres do not offer protection from lightning.

### (iii) If travelling -

#### Response:

- ✓ Get off bicycles, motorcycles or farm vehicles that may attract lightning.
- ✓ Get to a safe shelter.
- ✓ If boating or swimming, get to land as quickly as possible and take shelter.
- ✓ During a storm, remain in your vehicle until help arrives or the storm has passed (the metal roof will provide protection if you are not touching metal inside); windows should be up; park away from trees and power lines.

### (iv) If struck by lightning -

#### Treatment:

- ✓ Take the person who is struck by lightning to a hospital.
- ✓ If possible, give basic First Aid.
- ✓ People struck by lightning carry no electrical charge and can be handled safely.
- ✓ Check for broken bones, loss of hearing and eyesight.
- ✓ A victim of a lightning strike can suffer varying degrees of burn. Check the impact point and where the electricity left the body for injury marks.