

	<p><b>இந்திய அரசு</b>  இந்தியவானிலை ஆய்வுத் துறை  மண்டல வானிலை ஆய்வு மையம்  6, கல்லூரிசாலை,  சென்னை 600006  தொலைபேசி: 044- 28271951</p>		<p><b>GOVERNMENT OF INDIA</b>  <b>INDIA METEOROLOGICAL DEPARTMENT</b>  <b>Regional Meteorological Centre</b>  No. 6, College Road,  Chennai-600006  Phone: 044- 28271951</p>
---	---	---	--

DATE: 20-06-2024	Time of Issue: 13:00 hrs. IST
------------------	-------------------------------

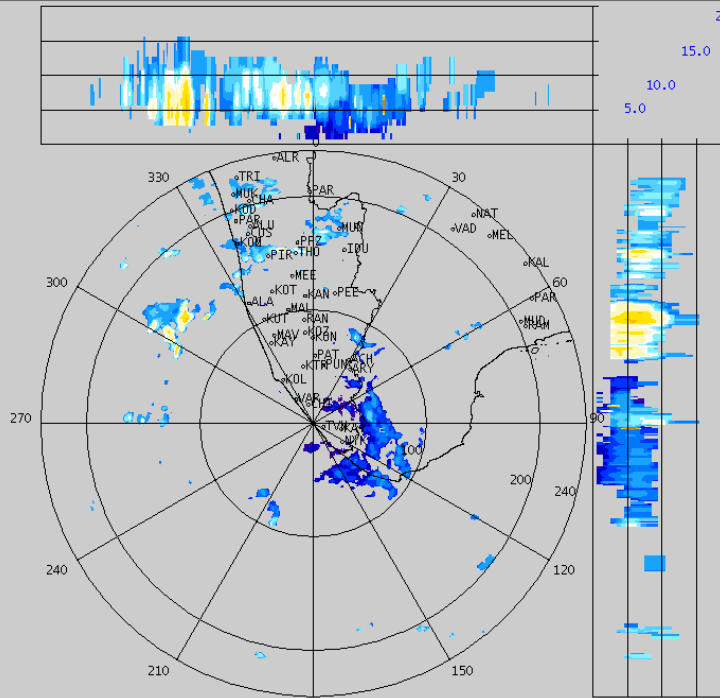
**Sub: Rain/Thunderstorm warning/Lightning warning**

VALIDITY	WEATHER PHENOMENA (LIKELY/VERY LIKELY/MOST LIKELY)	DISTRICT AFFECTED (ISOLATED/A FEW/MANY/MOST PLACES)	IMPACT
Upto 16:00 hrs. IST of 20.06.2024	Light thunderstorm and lightning with Light to Moderate Rain is likely.	Isolated places over <b>Kanyakumari, Tirunelveli, Thenkasi, Tiruchirapalli, Karur, Coimbatore, Dindugal and Theni</b> districts of Tamilnadu.	Water logging in some areas. Slippery roads in some areas. Traffic may be affected in some areas. Minor damage due to loose/unsecured structures.

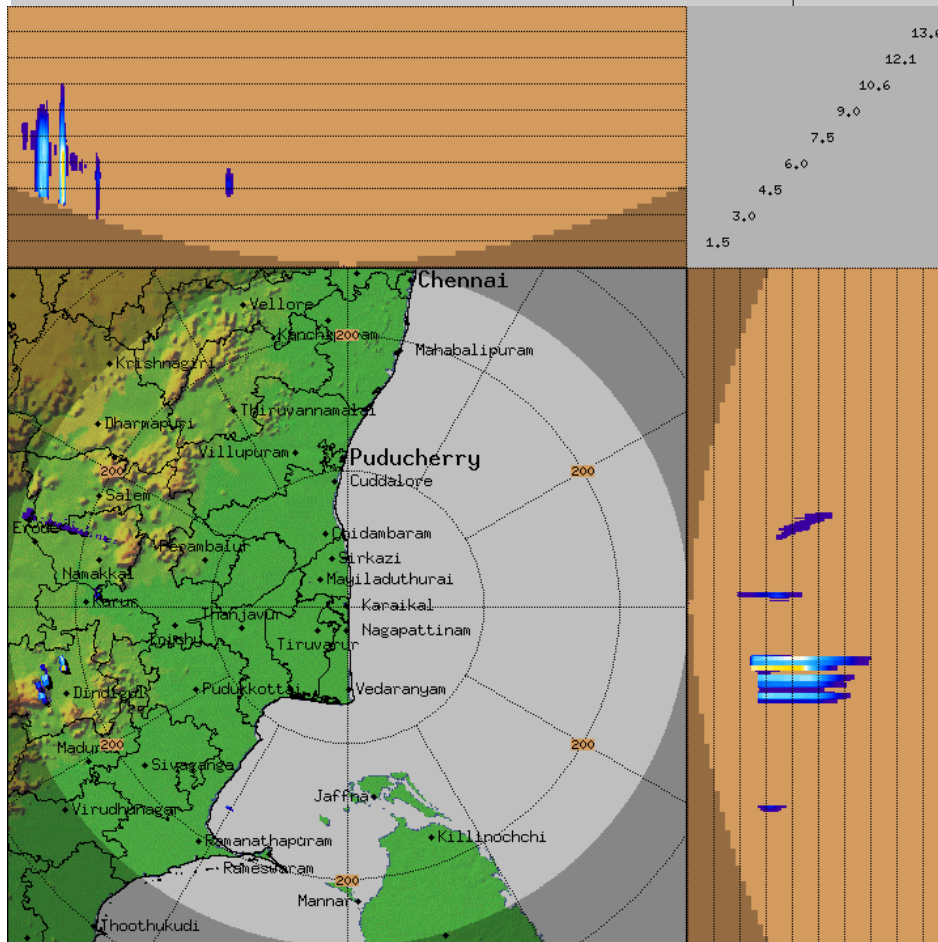
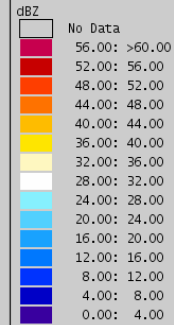
CDWRTERLS\_weather-DP\_2024\_06\_20\_07\_11\_26\_D5Fimd\_st\_dprf.dwr.dwr  
2024/06/20 07:11:26 (UTC)

MAX(Z)

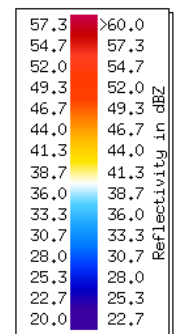
DWR CDWRTERLS  
( 8.5374N , 76.8657E , 27.0000 mts )



Height : 20.0 Km  
Layer Spacing : 1.0 Km  
Z (Lo, Hi) : 0.0, 70.0 dBZ  
Grid size : 1 Km  
Display Range : 240 Km  
Display Res : 0.9 Km/Pix  
DDR Enable : Yes  
Scan Elev (Lo, Hi) : 0.5, 21.0 Deg  
PRF (Lo, Hi) : 450, 600 Hz  
Scan Res : 150 mts  
Scan RPM : 1.5  
Log Threshold : 8 dB  
DTP : 57  
Pulse Width : 1.0 micro sec  
Clutter Filter : OFF  
SOI : 0.25  
CSR : 20 dB  
Scan Range : 240 Km  
Preprocessings : CL  
Filters : NONE



KARAIKAL-RADAR  
Max with panels  
MAX\_Z  
Task: IMD-B  
Min Hgt:0.0 km  
Max Hgt:15.0 km  
Max Range:250 km  
**07:22:25Z**  
20 JUN 2024 UTC



Duty Officer  
For Director In-Charge  
Regional Weather Forecasting Centre  
Regional Meteorological Centre

### Thunderstorm & Lightning: Do's and Don'ts

#### (i) If at home or work -

##### Preparation:

- ✓ Look for darkening skies and increased wind.
- ✓ If you hear thunder, you are close enough to be struck by lightning.
- ✓ Keep monitoring local media for updates and warning instructions.
- ✓ Stay indoors and avoid travel if possible.
- ✓ Close windows and doors, and secure objects outside your home (e.g. furniture, bins, etc.).
- ✓ Ensure that children and animals are inside.
- ✓ Unplug unnecessary electrical appliances (to isolate them from the main power supply which may conduct a power surge during a lightning storm).
- ✓ Remove tree timber or any other debris that may cause a flying accident.

##### Response:

- ✓ Avoid taking a bath or a shower, and stay away from running water. This is because lightning can travel along metal pipes. Keep away from doors, windows, fireplaces, stoves, bathtubs, or any other electrical conductors.
- ✓ Avoid using corded phones and other electrical equipment that can conduct lightning.

#### (ii) If Outdoor -

##### Response:

- ✓ Go to safe shelter immediately – avoid metal structures and constructions with metal sheeting.
- ✓ Ideally, find shelter in a low-lying area and make sure that the spot chosen is not likely to flood.
- ✓ Crouch down with feet together and head down to make yourself a smaller target.
- ✓ Hair standing up on the back of your neck could indicate that lightning is imminent.
- ✓ Do not lie flat on the ground; this will make a bigger target.
- ✓ Keep away from all utility lines (phone, power, etc.), metal fences, trees, and hilltops.
- ✓ Do not take shelter under trees as these conduct electricity.
- ✓ Rubber-soled shoes and car tyres do not offer protection from lightning.

#### (iii) If travelling -

##### Response:

- ✓ Get off bicycles, motorcycles or farm vehicles that may attract lightning.
- ✓ Get to a safe shelter.
- ✓ If boating or swimming, get to land as quickly as possible and take shelter.
- ✓ During a storm, remain in your vehicle until help arrives or the storm has passed (the metal roof will provide protection if you are not touching metal inside); windows should be up; park away from trees and power lines.

#### (iv) If struck by lightning -

##### Treatment:

- ✓ Take the person who is struck by lightning to a hospital.
- ✓ If possible, give basic First Aid.
- ✓ People struck by lightning carry no electrical charge and can be handled safely.

- ✓ Check for broken bones, loss of hearing and eyesight.
- ✓ A victim of a lightning strike can suffer varying degrees of burn. Check the impact point and where the electricity left the body for injury marks.

(pl visit <https://ndma.gov.in/Resources/awareness/lightning/visuals>