



**India Meteorological Department
(Ministry of Earth Sciences)**

SPECIAL BULLETIN NO. 1

TIME OF ISSUE: 1230 HOURS IST

DATED: 29.01.2023

FROM: INDIA METEOROLOGICAL DEPARTMENT (FAX NO. 24643965/24699216/24623220)

TO: CONTROL ROOM, NDM, MINISTRY OF HOME AFFAIRS (FAX NO. 23093750)

CONTROL ROOM NDMA (FAX NO. 26701729)

CABINET SECRETARIAT (FAX NO. 23012284, 23018638)

PS TO HON'BLE MINISTER FOR S & T AND EARTH SCIENCES (FAX NO. 23316745)

SECRETARY, MOES (FAX NO. 24629777)

H.Q. (INTEGRATED DEFENCE STAFF AND CDS) (FAX NO. 23005137/23005147)

DIRECTOR GENERAL, DOORDARSHAN (23385843)

DIRECTOR GENERAL, AIR (23421105, 23421219)

PIB MOES (FAX NO. 23389042)

UNI (FAX NO. 23355841)

D.G. NATIONAL DISASTER RESPONSE FORCE (NDRF) (FAX NO. 26105912, 2436 3260)

DIRECTOR, PUNCTUALITY, INDIAN RAILWAYS (FAX NO. 23388503)

CHIEF SECRETARY, ANDAMAN & NICOBAR ISLANDS (FAX NO. 03192- 232656)

CHIEF SECRETARY, GOVT. OF TAMIL NADU (FAX NO. 044-25672304)

CHIEF SECRETARY, GOVT. OF PUDUCHERRY (FAX NO. 0413-2337575, 2334145)

Sub: Well-marked Low pressure area over Southeast Bay of Bengal & adjoining East Equatorial Indian Ocean

Yesterday's Low pressure area over Southeast Bay of Bengal & adjoining East Equatorial Indian Ocean concentrated into a well-marked low pressure area in the morning and lies over the same region at 0830 hrs IST of today, the 29th January, 2023. It is very likely to move west-northwestwards, intensify further into a Depression around 30th January over Southwest Bay of Bengal and reach near Sri Lanka coast around 01st February.

Warnings:

(i) Rainfall (warning graphics enclosed)

- ❖ Light/moderate rainfall at most places with isolated heavy rainfalls very likely over south Tamil Nadu on 1st February.

(ii) Wind warning:

- ❖ **Squally weather with wind speed reaching 40-45 kmph gusting to 55 kmph** very likely over Southeast and adjoining Southwest Bay of Bengal & south Andaman Sea on 29th & 30th January.
- ❖ **Squally wind speed reaching 45-55 kmph gusting to 65 kmph** likely over Southwest and adjoining Southeast Bay of Bengal on 30th & 31st January.
- ❖ **Squally weather with wind speed reaching 40-45 kmph gusting to 55 kmph** over Southwest Bay of Bengal along & off Sri Lanka coast during 30th January to 2nd February and over Gulf of Mannar and Comorin area along and off south Tamil Nadu coast during 1st to 2nd February.

(iii) Sea condition

- ❖ **Sea condition likely to be rough to very rough** over Southeast and adjoining Southwest Bay of Bengal & south Andaman Sea on 29th & 30th January.
- ❖ **Sea condition likely to be very rough** over Southwest and adjoining Southeast Bay of Bengal on 30th & 31st January.
- ❖ **Sea condition likely to be rough to very rough** over Southwest Bay of Bengal along & off Sri Lanka coast during 30th January to 2nd February and over Gulf of Mannar and Comorin area along and off south Tamil Nadu coast during 1st to 2nd February.

(iv) Fishermen Warning (warning graphics enclosed)

Fishermen are advised not to venture into:

- ❖ South Andaman Sea from 29th to 30th January.
- ❖ Southeast Bay of Bengal from 30th to 31st January.
- ❖ Southwest Bay of Bengal from 30th January to 2nd February
- ❖ Along & off Sri Lanka coast from 30th January to 2nd February.
- ❖ Along & off south Tamilnadu, Gulf of Mannar and Comorin from 1st to 2nd February.

The system is under continuous surveillance and the next message will be issued at 1230 hours IST of tomorrow, the 30th January, 2023.

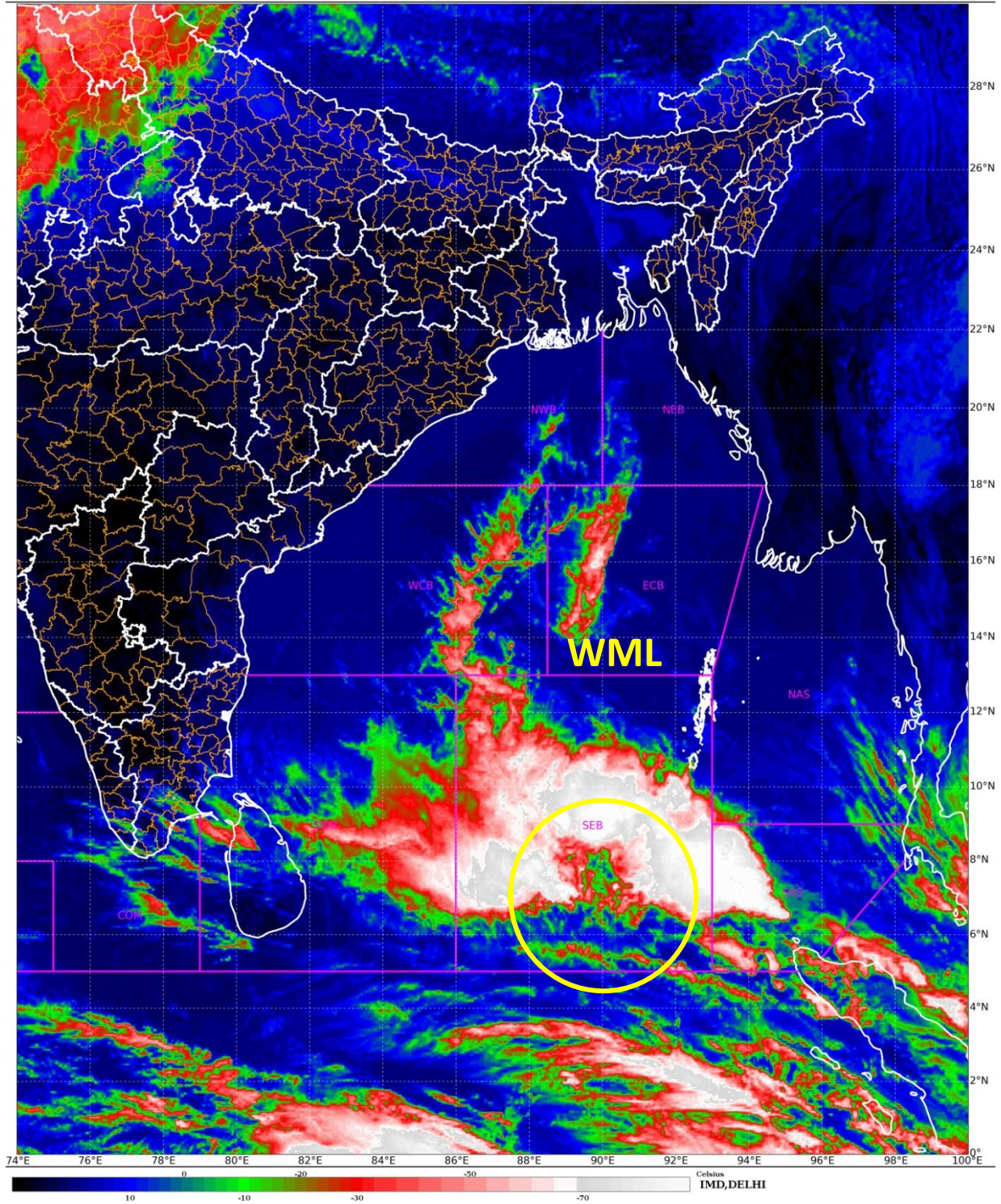
(Ananda Kumar Das)
Scientist F, Cyclone Warning, New Delhi

Copy to: ACWC Kolkata/ ACWC Chennai/ CWC Bhubaneswar/CWC Visakhapatnam/MO Port Blair

LEGEND: Heavy Rainfall: 64.5 to 115.5mm, **Very Heavy Rainfall:** 115.6 to 204.4mm **Most Places:** more than 76% of total stations, **Isolated Places:** Less than 25% of total

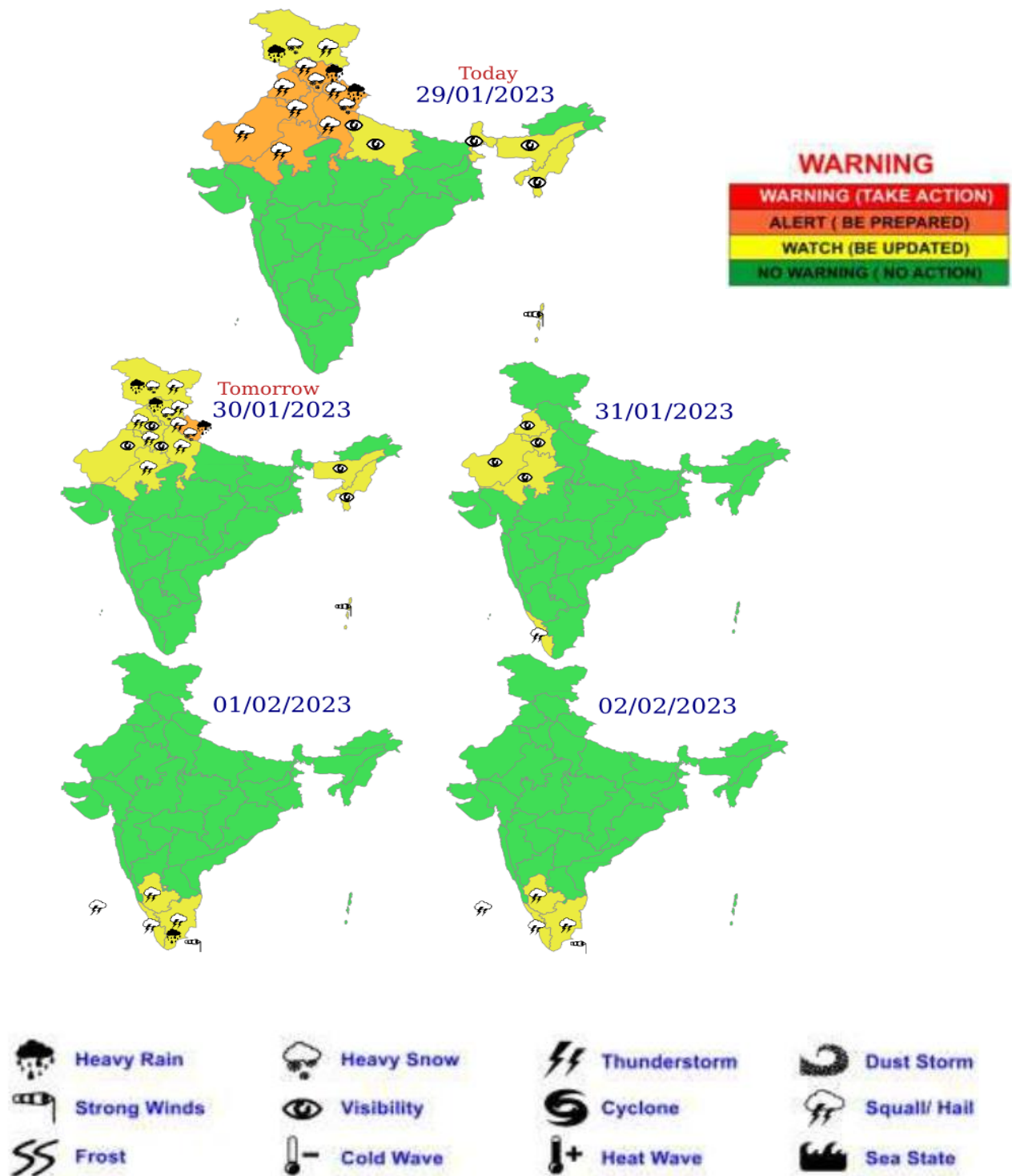
SAT : INSAT-3D IMG
IMG_TIR1_TEMP 10.8 um
LIC Mercator

29-01-2023/(0530 to 0557) GMT
29-01-2023/(1100 to 1127) IST

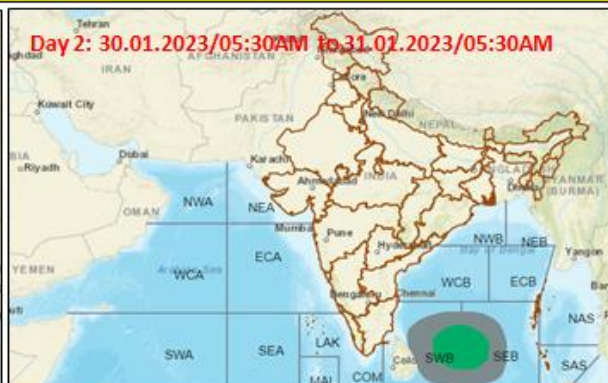


WML- Well-Marked Low Pressure Area

Multi hazard Warning Graphics



Fishermen warning graphics



Squally WX with wind speed 40-45 kmph gusting to 55 kmph

Squally wind speed 45-55 kmph gusting to 65 kmph

Fishermen are advised not to venture into the marked areas.