



India Meteorological Department

(Ministry of Earth Sciences)

BULLETIN NO. : 01(BOB/05/2020)

TIME OF ISSUE: 0930 HOURS IST

DATED: 30.11.2020

FROM: INDIA METEOROLOGICAL DEPARTMENT (FAX NO. 24643965/24699216/24623220)

TO: CONTROL ROOM, NDM, MINISTRY OF HOME AFFAIRS (FAX.NO. 23093750)

CONTROL ROOM NDMA (FAX.NO. 26701729)

CABINET SECRETARIAT (FAX.NO.23012284, 23018638)

PS TO HON'BLE MINISTER FOR S & T AND EARTH SCIENCES (FAX NO.23316745)

SECRETARY, MOES, (FAX NO. 24629777)

H.Q. (INTEGRATED DEFENCE STAFF AND CDS) (FAX NO. 23005137/23005147)

DIRECTOR GENERAL, DOORDARSHAN (23385843)

DIRECTOR GENERAL, AIR (23421105, 23421219)

PIB MOES (FAX NO. 23389042)

UNI (FAX NO. 23355841)

D.G. NATIONAL DISASTER RESPONSE FORCE (NDRF) (FAX NO. 26105912, 2436 3260)

DIRECTOR, PUNCTUALITY, INDIAN RAILWAYS (FAX NO. 23388503)

CHIEF SECRETARY, KARNATAKA (FAX NO. 080-22256360)

CHIEF SECRETARY, KERALA (FAX NO. 0471-2327176)

CHIEF SECRETARY, LAKSHADWEEP ISLANDS (FAX NO. 04896-262184)

CHIEF SECRETARY, ANDAMAN & NICOBAR ISLANDS (FAX NO. 03192- 232656)

CHIEF SECRETARY, WEST BENGAL (FAX NO. 033-22144328)

CHIEF SECRETARY, GOVT. OF ODISHA (FAX NO. 0674 -2536660)

CHIEF SECRETARY, ANDHRA PRADESH (FAX NO. 0863-2441029, 08645-246600)

CHIEF SECRETARY, TAMIL NADU (FAX NO. 044-25672304)

CHIEF SECRETARY, PUDUCHERRY (FAX NO. 0413-2337575, 2334145)

Sub: Depression over southeast Bay of Bengal & neighbourhood

Latest satellite and Ship observations indicate that the well marked low pressure area over southeast Bay of Bengal & neighbourhood concentrated into a **Depression** and lay centered at 0530 hrs IST of 30th November 2020 over southeast Bay of Bengal near Lat. 7.5° N and Long. 88.0°E, about 750 km east-southeast of Trincomalee (Sri Lanka) and 1150 km east-southeast of Kanyakumari (India). It is very likely to intensify further into a Deep Depression during next 24 hours. It is also likely to intensify further into a cyclonic storm. It is very likely to move west-northwestwards and cross Sri Lanka coast between latitude 7.5° N and 9.0° N around evening of 2nd December. It is very like to move nearly westwards thereafter and emerge into Comorin area on 3rd December morning. Forecast track and intensity are given below:

Date/Time(IST)	Position (Lat. °N/ long. °E)	Maximum sustained surface wind speed (Kmph)	Category of cyclonic disturbance
30.11.20/0530	7.5/88.0	40-50 gusting to 60	Depression
30.11.20/1730	7.7/87.0	50-60 gusting to 70	Deep Depression
01.12.20/0530	7.9/86.1	60-70 gusting to 80	Cyclonic Storm
01.12.20/1730	8.1/84.8	65-75 gusting to 85	Cyclonic Storm
02.12.20/0530	8.3/83.1	70-80 gusting to 90	Cyclonic Storm
02.12.20/1730	8.5/81.5	70-80 gusting to 90	Cyclonic Storm
03.12.20/0530	8.5/80.2	60-70 gusting to 80	Cyclonic Storm

Spatial rainfall distribution: Isolated: ≤25%, A few: 26-50%, Many: 51-75%, Most: 76-100%

Rainfall amount (mm): Heavy rain: 64.5 – 115.5, Very heavy rain: 115.6 – 204.4, Extremely heavy rain: 204.5 or more.

Warnings:

(i) Rainfall

- **Heavy to very heavy rainfall** at a few places with isolated **Extremely heavy falls** very likely over south Tamilnadu and south Kerala on 2nd December, 2020 and Isolated heavy to very heavy rainfall likely over these regions on 1st, 3rd and 4th December 2020.
- Heavy to very heavy rainfall at Isolated places very likely over north Tamilnadu, Puducherry, Mahe & Kariakal and north Kerala during 2nd and 3rd December, 2020 and isolated heavy rainfall during 1st and 4th December.
- Heavy rainfall at isolated places very likely over south Coastal Andhra Pradesh during 2nd & 03rd December and over Lakshadweep during 03rd and 4th December, 2020.

Sub-Divisions	30 Nov 2020*	01 Dec 2020*	02 Dec 2020*	03 Dec 2020*	04 Dec 2020*
South Tamilnadu	Rainfall at a few places	Rainfall at many places with heavy to very heavy rainfall at isolated places	Rainfall at most places with heavy to very heavy rainfall at few places and extremely heavy fall at isolated places	Rainfall at many places with heavy to very heavy rainfall at isolated places	Rainfall at many places with heavy to very heavy rainfall at isolated places
North Tamilnadu, Puducherry & Karaikal	Rainfall at isolated places	Rainfall at a few places with heavy to very heavy rainfall at isolated places	Rainfall at most places with heavy to very heavy rainfall at isolated places	Rainfall at many places with heavy to very heavy rainfall at isolated places	Rainfall at many places with heavy fall at isolated places
South Kerala	Rainfall at isolated places	Rainfall at many places with heavy to very heavy rainfall at isolated places	Rainfall at most places with heavy to very heavy rainfall at few places and extremely heavy fall at isolated places	Rainfall at many places with heavy to very heavy rainfall at isolated places	Rainfall at many places with heavy to very heavy rainfall at isolated places
North Kerala & Mahe	Rainfall at isolated places	Rainfall at many places with heavy rainfall at isolated places	Rainfall at most places with heavy to very heavy rainfall at isolated places	Rainfall at many places with heavy rainfall at isolated places	Rainfall at a few places with heavy fall at isolated places
South Coastal Andhra Pradesh	Rainfall at isolated places	Rainfall at isolated places	Rainfall at a few places with heavy rainfall at isolated places	Rainfall at a few places with heavy rainfall at isolated places	Rainfall at a few places
Lakshadweep	Rainfall at a few places	Rainfall at a few places	Rainfall at most places	Rainfall at most places with heavy to very falls at isolated places	Rainfall at most places with heavy to very falls at isolated places

(ii) Wind warning

- Squally Weather (wind speed reaching 45-55 kmph gusting to 65 kmph) very likely over central parts of South Bay of Bengal on 30th November.
- It would gradually increase becoming 55-65 kmph gusting to 75 kmph over southeast and adjoining southwest Bay of Bengal from 1st December night and 70-80 kmph gusting to 90 kmph over southwest Bay of Bengal, along & off Sri Lanka coast and 45-55 kmph gusting to 65 kmph over Comorin Area, Gulf of Mannar and Tamilnadu-Kerala coasts from 2nd December forenoon for subsequent 24 hours.

Spatial rainfall distribution: Isolated: ≤25%, A few: 26-50%, Many: 51-75%, Most: 76-100%

Rainfall amount (mm): Heavy rain: 64.5 – 115.5, Very heavy rain: 115.6 – 204.4, Extremely heavy rain: 204.5 or more.

- The squally wind speed reaching 55-65 kmph gusting to 75 kmph is very likely to prevail over Gulf of Mannar, along & off south Tamilnadu & Kerala coasts, Comorin Area, Lakshadweep-Maldives area and adjoining southeast Arabian Sea from 3rd December morning for subsequent 24 hours.

(iii) Sea condition

- Sea condition will be rough to very rough over southeast and adjoining southwest Bay of Bengal from 1st December night and very rough to high gusting to 90 kmph over southwest Bay of Bengal, along & off east Sri Lanka coast and rough to very rough over Comorin Area, Gulf of Mannar and Tamilnadu-Kerala coasts from 2nd December forenoon for subsequent 24 hours.
- Sea condition will be rough to very rough over Gulf of Mannar, along and off south Tamilnadu & Kerala coasts, Comorin Area from 2nd December morning and Lakshadweep-Maldives area and adjoining southeast Arabian Sea from 3rd December morning for subsequent 24 hours.

(iv) Fishermen Warning

Fishermen are advised not to venture into southeast and adjoining southwest Bay of Bengal from 1st December night; over southwest Bay of Bengal, along & off east Sri Lanka coast, Comorin Area, Gulf of Mannar and Tamilnadu-Kerala coasts from 2nd December forenoon for subsequent 24 hours, over Gulf of Mannar, along & off south Tamilnadu & Kerala coasts, Comorin Area from 2nd December morning and over Lakshadweep-Maldives area & adjoining southeast Arabian Sea from 3rd December morning for subsequent 24 hours. Also those who are out at Sea are advised to return to the coast by today.

The next bulletin will be issued at 1130 hrs IST of 30th December, 2020.

(Shobhit Katiyar)
Scientist-C, RSMC, New Delhi

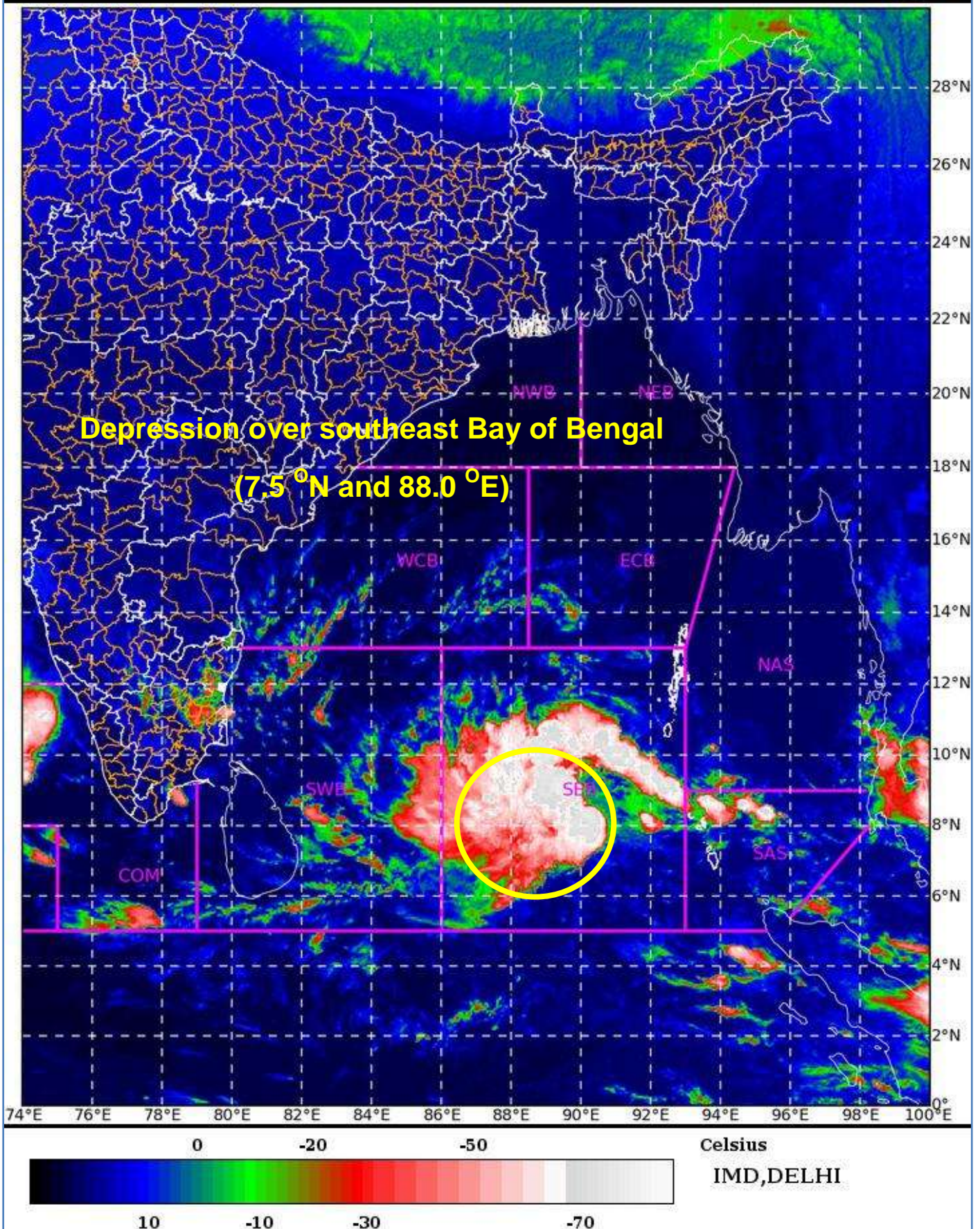
Copy to: ACWC Kolkata/Chennai/CWC Bhubaneswar/CWC Visakhapatnam/CWC
Thiruvananthapuram

Spatial rainfall distribution: Isolated: ≤25%, A few: 26-50%, Many: 51-75%, Most: 76-100%
Rainfall amount (mm): Heavy rain: 64.5 – 115.5, Very heavy rain: 115.6 – 204.4, Extremely heavy rain: 204.5 or more.

SAT : INSAT-3DR IMG 30-11-2020/(0215 to 0241) GMT

IMG_TIR1_TEMP 10.8 um 30-11-2020/(0745 to 0811) IST

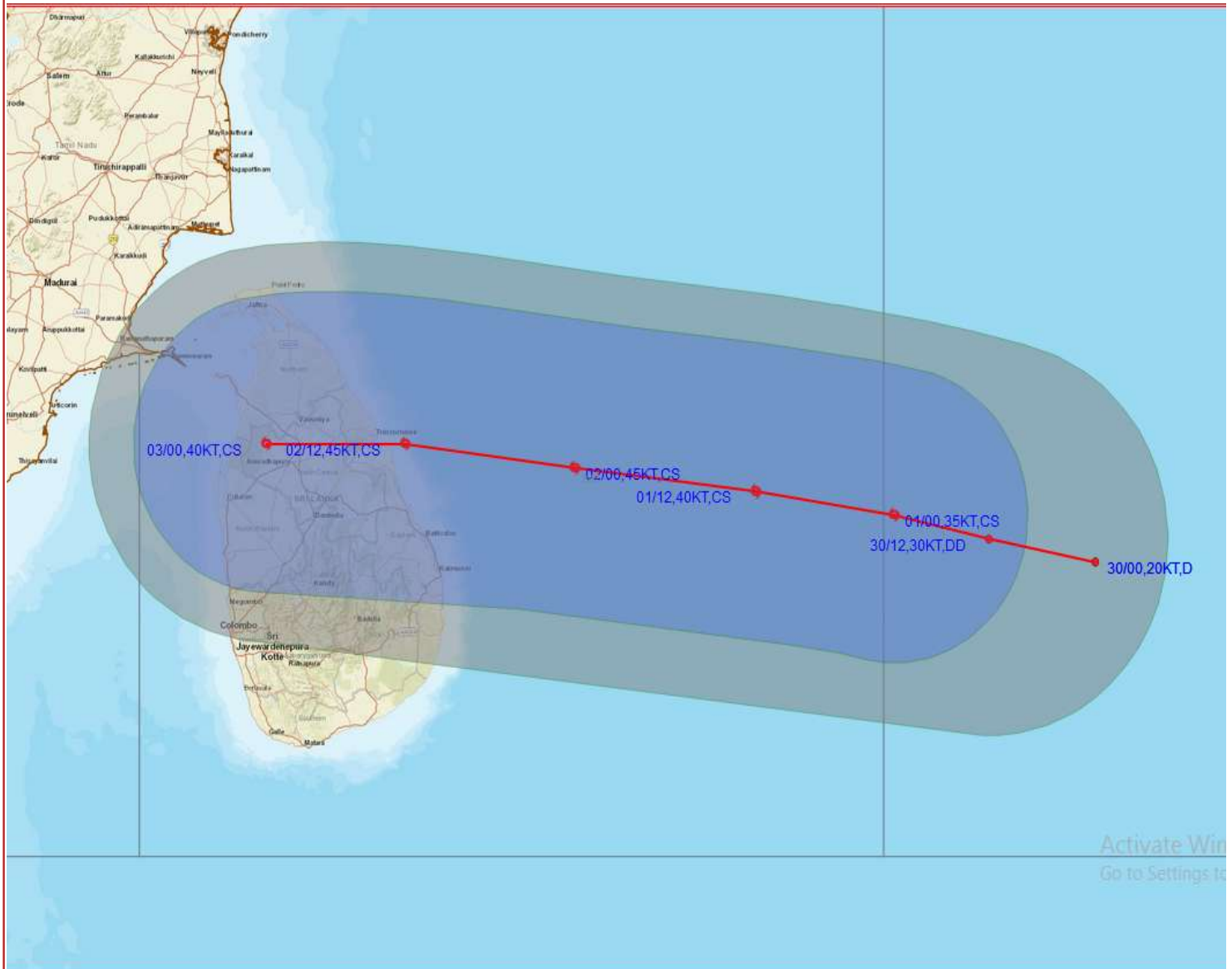
L1C Mercator



Spatial rainfall distribution: Isolated: ≤25%, A few: 26-50%, Many: 51-75%, Most: 76-100%
Rainfall amount (mm): Heavy rain: 64.5 – 115.5, Very heavy rain: 115.6 – 204.4, Extremely heavy rain: 204.5 or more.



OBSERVED AND FORECAST TRACK ALONGWITH QUADRANT WIND DISTRIBUTION OF DEPRESSION OVER SOUTHEAST BAY OF BENGAL BASED ON 0000 UTC OF 30TH NOVEMBER, 2020.



DATE/TIME IN UTC
 IST=UTC + 0530
 L: LOW PRESSURE AREA
 WML: WELL MARKED LOW PRESSURE AREA
 D: DEPRESSION (17-27 KT)
 DD: DEEP DEPRESSION (28-33 KT)
 CS: CYCLONIC STORM (34-47 KT)
 SCS: SEVERE CYCLONIC STORM (48-63KT)
 VSCS: VERY SEVERE CYCLONIC STORM (64-89 KT)
 ESCS: EXTREMELY SEVERE CYCLONIC STORM (90-119 KT)
 SuCS: SUPER CYCLONIC STORM (\geq 120 KT)

- LESS THAN 34 KT
- 34-47 KT
- \geq 48 KT
- OBSERVED TRACK
- FORECAST TRACK
- ▲ CONE OF UNCERTAINTY
- AREA OF MAXIMUM SUSTAINED WIND SPEED:
- 28-33 KT (52-61 KMPH)
- 34-49 KT (62-91 KMPH)
- 50-63 KT (92-117 KMPH)
- \geq 64 KT (\geq 118 KMPH)

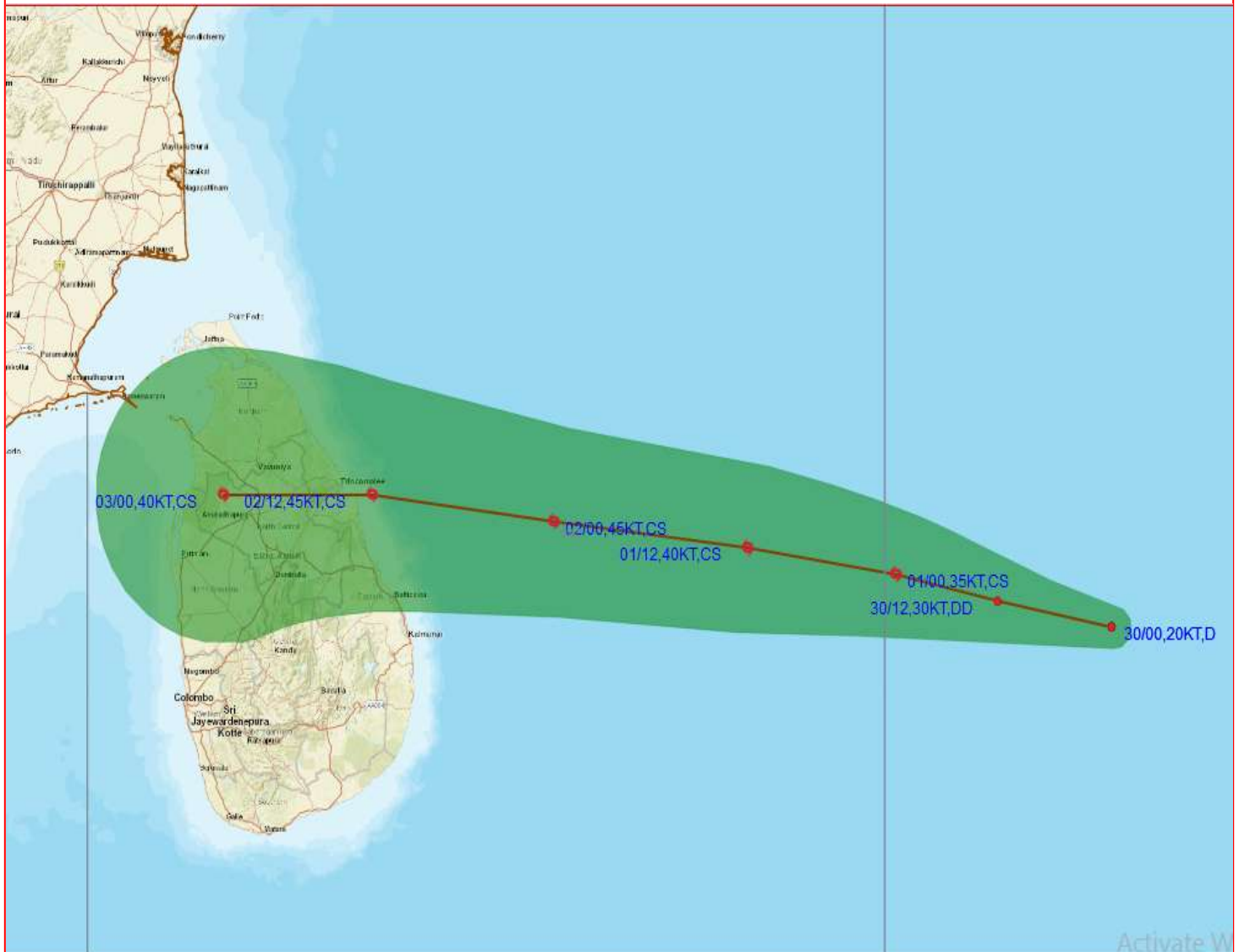
IMPACT OVER THE SEA

MSW (knot/kmph)	Impact	Action
28-33 (52-61)	Very rough seas	Total suspension of fishing operations
34-49 (62-91)	High to very high seas	Total suspension of fishing operations
50-63 (92-117)	Very high seas	Total suspension of fishing operations
\geq 64 (\geq 118)	Phenomenal	Total suspension of fishing operations

Spatial rainfall distribution: Isolated: \leq 25%, A few: 26-50%, Many: 51-75%, Most: 76-100%
 Rainfall amount (mm): Heavy rain: 64.5 – 115.5, Very heavy rain: 115.6 – 204.4, Extremely heavy rain: 204.5 or more.



OBSERVED AND FORECAST TRACK ALONGWITH CONE OF UNCERTAINTY OF DEPRESSION OVER SOUTHEAST BAY OF BENGAL BASED ON 0000 UTC OF 30TH NOVEMBER, 2020.



Activate W
Go to Settings

img/GIS/previewcyclone.html#

DATE/TIME IN UTC
IST=UTC + 0530
L: LOW PRESSURE AREA
WML: WELL MARKED LOW PRESSURE AREA
D: DEPRESSION (17-27 KT)
DD: DEEP DEPRESSION (28-33 KT)
CS: CYCLONIC STORM (34-47 KT)
SCS: SEVERE CYCLONIC STORM (48-63KT)
VSCS: VERY SEVERE CYCLONIC STORM (64-89 KT)
ESCS: EXTREMELY SEVERE CYCLONIC STORM (90-119 KT)
SuCS: SUPER CYCLONIC STORM (≥ 120 KT)

- LESS THAN 34 KT
- 34-47 KT
- ≥ 48 KT
- OBSERVED TRACK
- FORECAST TRACK
- ▲ CONE OF UNCERTAINTY

Spatial rainfall distribution: Isolated: $\leq 25\%$, A few: 26-50%, Many: 51-75%, Most: 76-100%
Rainfall amount (mm): Heavy rain: 64.5 – 115.5, Very heavy rain: 115.6 – 204.4, Extremely heavy rain: 204.5 or more.