



## India Meteorological Department

(Ministry of Earth Sciences)

**BULLETIN NO. : 03(BOB/05/2020)**

**TIME OF ISSUE: 1500 HOURS IST**

**DATED: 30.11.2020**

**FROM: INDIA METEOROLOGICAL DEPARTMENT (FAX NO. 24643965/24699216/24623220)**

**TO: CONTROL ROOM, NDM, MINISTRY OF HOME AFFAIRS (FAX.NO. 23093750)**

**CONTROL ROOM NDMA (FAX.NO. 26701729)**

**CABINET SECRETARIAT (FAX.NO.23012284, 23018638)**

**PS TO HON'BLE MINISTER FOR S & T AND EARTH SCIENCES (FAX NO.23316745)**

**SECRETARY, MOES, (FAX NO. 24629777)**

**H.Q. (INTEGRATED DEFENCE STAFF AND CDS) (FAX NO. 23005137/23005147)**

**DIRECTOR GENERAL, DOORDARSHAN (23385843)**

**DIRECTOR GENERAL, AIR (23421105, 23421219)**

**PIB MOES (FAX NO. 23389042)**

**UNI (FAX NO. 23355841)**

**D.G. NATIONAL DISASTER RESPONSE FORCE (NDRF) (FAX NO. 26105912, 2436 3260)**

**DIRECTOR, PUNCTUALITY, INDIAN RAILWAYS (FAX NO. 23388503)**

**CHIEF SECRETARY, KARNATAKA (FAX NO. 080-22256360)**

**CHIEF SECRETARY, KERALA (FAX NO. 0471-2327176)**

**CHIEF SECRETARY, LAKSHADWEEP ISLANDS (FAX NO. 04896-262184)**

**CHIEF SECRETARY, ANDAMAN & NICOBAR ISLANDS (FAX NO. 03192- 232656)**

**CHIEF SECRETARY, WEST BENGAL (FAX NO. 033-22144328)**

**CHIEF SECRETARY, GOVT. OF ODISHA (FAX NO. 0674 -2536660)**

**CHIEF SECRETARY, ANDHRA PRADESH (FAX NO. 0863-2441029, 08645-246600)**

**CHIEF SECRETARY, TAMIL NADU (FAX NO. 044-25672304)**

**CHIEF SECRETARY, PUDUCHERRY (FAX NO. 0413-2337575, 2334145)**

### **Sub: Depression over southeast Bay of Bengal & neighbourhood (Pre-Cyclone Watch for South Tamilnadu and South Kerala coasts)**

The **Depression** over southeast Bay of Bengal moved west-northwestwards at a speed of 12 kmph during past six hours and lay centered at 1130 hrs IST of today, the 30<sup>th</sup> November 2020 over the same region near Lat. 7.8° N and Long. 87.4°E, about 680 km east-southeast of Trincomalee (Sri Lanka) and 1090 km east of Kanniyakumari (India). It is very likely to intensify further into a Deep Depression during next 12 hours and into a cyclonic storm during subsequent 24 hours. It is very likely to move west-northwestwards and cross Sri Lanka coast between latitude 7.5° N and 9.0° N during evening/night of 2<sup>nd</sup> December. It is very like to move nearly westwards thereafter and emerge into Comorin area on 3<sup>rd</sup> December morning.

Forecast track and intensity are given below:

| Date/Time(IST) | Position<br>(Lat. °N/ long. °E) | Maximum sustained surface<br>wind speed (Kmph) | Category of cyclonic<br>disturbance |
|----------------|---------------------------------|--|-------------------------------------|
| 30.11.20/1130  | 7.8/87.4                        | 45-55 gusting to 65                            | Depression                          |
| 30.11.20/2330  | 8.1/86.6                        | 50-60 gusting to 70                            | Deep Depression                     |
| 01.12.20/1130  | 8.4/85.3                        | 60-70 gusting to 80                            | Cyclonic Storm                      |
| 01.12.20/2330  | 8.5/83.8                        | 65-75 gusting to 85                            | Cyclonic Storm                      |
| 02.12.20/1130  | 8.6/82.2                        | 70-80 gusting to 90                            | Cyclonic Storm                      |
| 02.12.20/2330  | 8.6/80.5                        | 70-80 gusting to 90                            | Cyclonic Storm                      |
| 03.12.20/1130  | 8.4/79.3                        | 60-70 gusting to 80                            | Cyclonic Storm                      |

**Spatial rainfall distribution: Isolated: ≤25%, A few: 26-50%, Many: 51-75%, Most: 76-100%**

**Rainfall amount (mm): Heavy rain: 64.5 – 115.5, Very heavy rain: 115.6 – 204.4, Extremely heavy rain: 204.5 or more.**

## Warnings:

### (i) Rainfall

- **Heavy to very heavy rainfall** at a few places with isolated **Extremely heavy falls** very likely over **south Tamilnadu (Kanniyakumari, Tirunelveli, Thoothukudi, Tenkasi, Ramanathapuram and Sivagangai)** on 2<sup>nd</sup> and 3<sup>rd</sup> December, 2020; **over south Kerala(Thiruvananthapuram, Kollam, Pathanamthitta and Alappuzah)** on 3<sup>rd</sup> December and isolated heavy to very heavy rainfall likely over south Tamilnadu on 1<sup>st</sup> and 4<sup>th</sup> December 2020 and south Kerala on 2<sup>nd</sup> and 4<sup>th</sup> December, 2020.
- Heavy to very heavy rainfall at Isolated places very likely over north Tamilnadu, Puducherry, Mahe & Kariakal and north Kerala during 2<sup>nd</sup> and 3<sup>rd</sup> December, 2020 and isolated heavy rainfall on 1<sup>st</sup> and 4<sup>th</sup> December.
- Heavy rainfall at isolated places very likely over south Coastal Andhra Pradesh during 2<sup>nd</sup> & 03<sup>rd</sup> December and over Lakshadweep during 03<sup>rd</sup> and 4th December, 2020.

| Sub-Divisions                          | 30 Nov 2020*                | 01 Dec 2020*  | 02 Dec 2020*  | 03 Dec 2020*  | 04 Dec 2020*   |
|--|-----------------------------|---|---|---|--|
| South Tamilnadu                        | Rainfall at a few places    | Rainfall at many places with heavy rainfall at isolated places  | Rainfall at most places with heavy to very heavy rainfall at few places and extremely heavy fall at isolated places | Rainfall at most places with heavy to very heavy rainfall at few places and extremely heavy fall at isolated places | Rainfall at many places with heavy to very heavy rainfall at isolated places |
| North Tamilnadu, Puducherry & Karaikal | Rainfall at isolated places | Rainfall at a few places with heavy rainfall at isolated places | Rainfall at many places with heavy to very heavy rainfall at isolated places  | Rainfall at many places with heavy to very heavy rainfall at isolated places  | Rainfall at many places with heavy fall at isolated places                   |
| South Kerala                           | Rainfall at isolated places | Rainfall at many places with heavy rainfall at isolated places  | Rainfall at most places with heavy to very heavy rainfall at isolated places  | Rainfall at most places with heavy to very heavy rainfall at few places and extremely heavy fall at isolated places | Rainfall at many places with heavy to very heavy rainfall at isolated places |
| North Kerala & Mahe                    | Rainfall at isolated places | Rainfall at many places with heavy rainfall at isolated places  | Rainfall at many places with heavy to very heavy rainfall at isolated places  | Rainfall at most places with heavy to very heavy rainfall at isolated places  | Rainfall at a few places with heavy fall at isolated places                  |
| South Coastal Andhra Pradesh           | Rainfall at isolated places | Rainfall at isolated places                                     | Rainfall at a few places with heavy rainfall at isolated places   | Rainfall at a few places with heavy rainfall at isolated places   | Rainfall at a few places   |
| Lakshadweep                            | Rainfall at a few places    | Rainfall at a few places  | Rainfall at most places   | Rainfall at most places with heavy to very falls at isolated places   | Rainfall at most places with heavy to very falls at isolated places          |

Spatial rainfall distribution: Isolated: ≤25%, A few: 26-50%, Many: 51-75%, Most: 76-100%

Rainfall amount (mm): Heavy rain: 64.5 – 115.5, Very heavy rain: 115.6 – 204.4, Extremely heavy rain: 204.5 or more.

## (ii) Wind warning

- Squally wind speed reaching 45-55 kmph gusting to 65 kmph very likely over central parts of South Bay of Bengal on 30<sup>th</sup> November.
- It would gradually increase becoming 55-65 kmph gusting to 75 kmph over southeast and adjoining southwest Bay of Bengal from 30<sup>th</sup> November night. It would gradually increase becoming gale wind speed reaching 70-80 kmph gusting to 90 kmph over southwest Bay of Bengal, along & off Sri Lanka coast from 2<sup>nd</sup> December morning for subsequent 24 hours.
- Squally wind speed reaching 45-55 kmph gusting to 65 kmph very likely over Comorin Area, Gulf of Mannar and south Tamilnadu-Kerala coasts from 2<sup>nd</sup> December forenoon. It will gradually increase becoming 55-65 kmph gusting to 75 kmph over Gulf of Mannar, along & off south Tamilnadu & Kerala coasts, over Comorin Area, Lakshadweep-Maldives area and adjoining southeast Arabian Sea from 3<sup>rd</sup> December morning for subsequent 48 hours.

## (iii) Sea condition

- Sea condition will be rough to very rough over southeast Bay of Bengal from 30<sup>th</sup> November to 1<sup>st</sup> December and very rough to high over southwest & adjoining southeast Bay of Bengal and along & off east Sri Lanka coast during 1<sup>st</sup> & 2<sup>nd</sup> December, and rough to very rough over Comorin Area, Gulf of Mannar & along & off south Tamilnadu-Kerala coasts from 2<sup>nd</sup> to 4<sup>th</sup> December.
- Sea condition will be rough to very rough over Lakshadweep-Maldives area and adjoining southeast Arabian Sea during 3<sup>rd</sup> – 4<sup>th</sup> December.

## (iv) Fishermen Warning

- **Total suspension** of fishing operation **during 30<sup>th</sup> November to 4<sup>th</sup> December** over the areas as mentioned below.
- Fishermen are advised not to venture into southeast Bay of Bengal from 30<sup>th</sup> Nov to 1<sup>st</sup> Dec, southwest Bay of Bengal and along & off east Sri Lanka coast from **1<sup>st</sup> to 3<sup>rd</sup> December**; Comorin Area, Gulf of Mannar and south Tamilnadu-Kerala coasts from **2<sup>nd</sup> to 4<sup>th</sup> December**, over Lakshadweep-Maldives area & adjoining southeast Arabian Sea **from 3<sup>rd</sup> to 4<sup>th</sup> December**.
- Fishermen out at Sea are advised to return to the coast by today.

**The next bulletin will be issued at 2030 hrs IST of 30th November, 2020.**

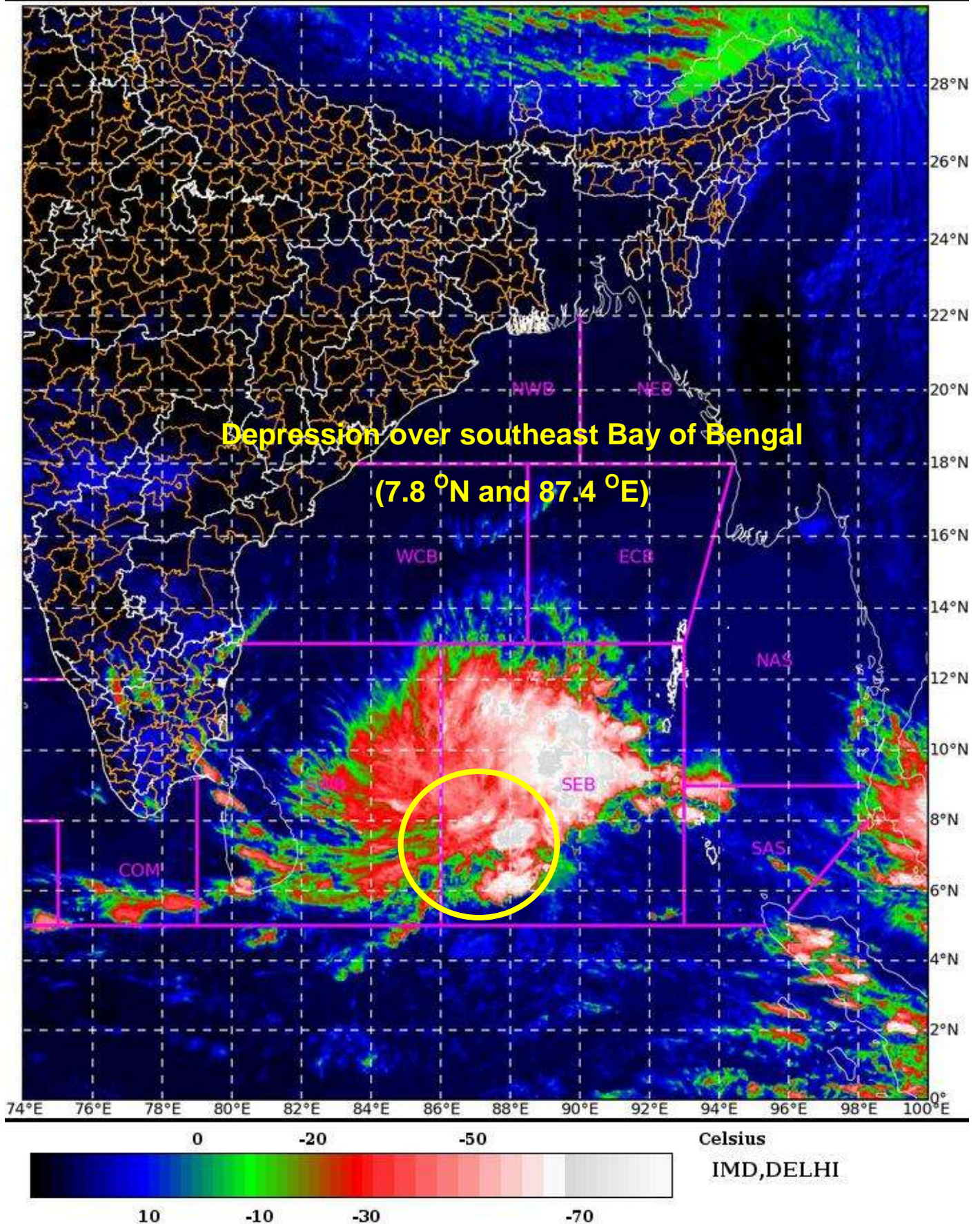
**(R.K. Jenamani)**  
**Scientist-F, RSMC, New Delhi**

Copy to: ACWC    Kolkata/Chennai/CWC    Bhubaneswar/CWC    Visakhapatnam/CWC  
Thiruvananthapuram

Spatial rainfall distribution: Isolated: ≤25%, A few: 26-50%, Many: 51-75%, Most: 76-100%  
Rainfall amount (mm): Heavy rain: 64.5 – 115.5, Very heavy rain: 115.6 – 204.4, Extremely heavy rain: 204.5 or more.



SAT : INSAT-3DR IMG 30-11-2020/(0845 to 0911) GMT  
 IMG\_TIR1\_TEMP 10.8 um 30-11-2020/(1415 to 1441) IST  
 L1C Mercator

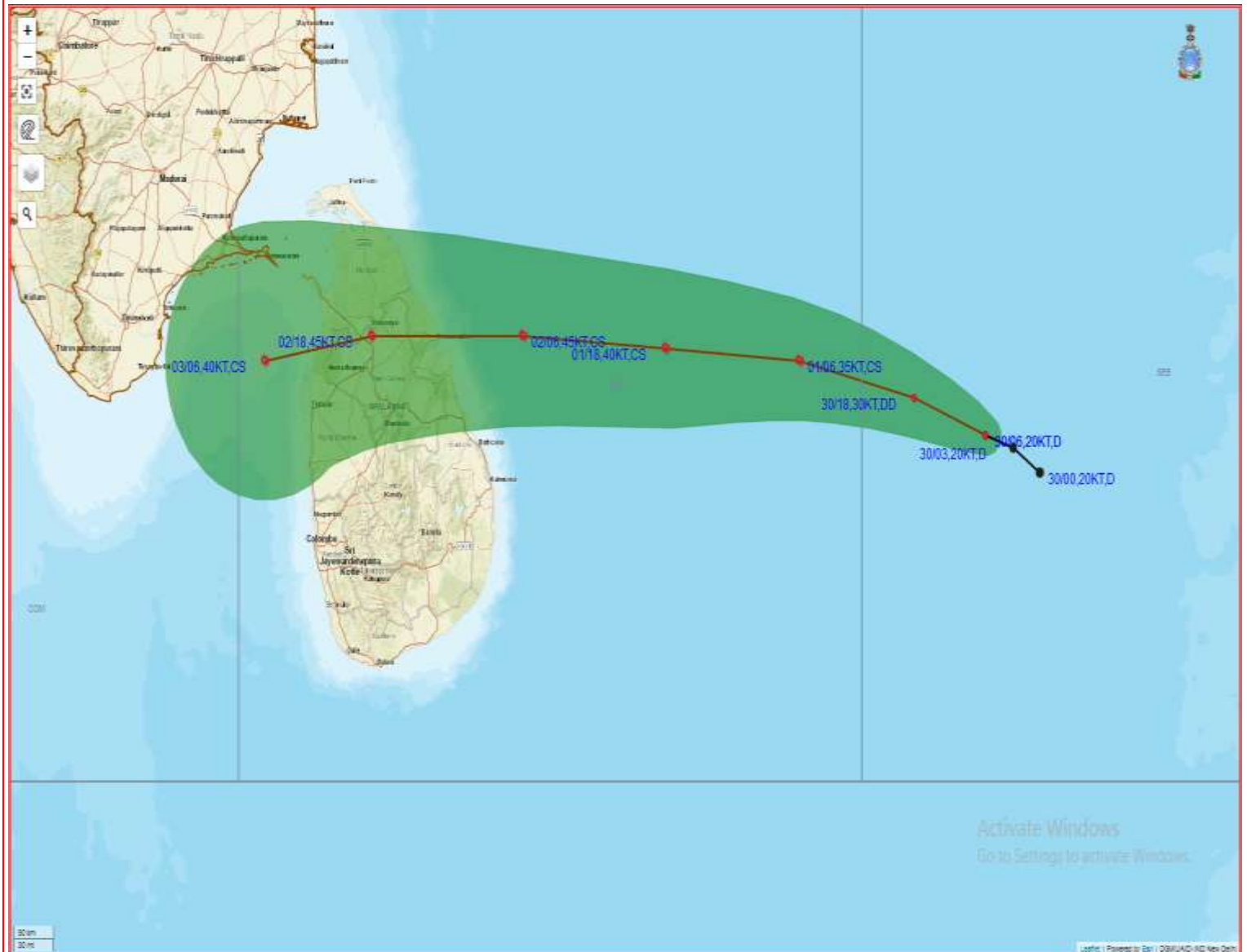


Spatial rainfall distribution: Isolated:  $\leq 25\%$ , A few: 26-50%, Many: 51-75%, Most: 76-100%  
 Rainfall amount (mm): Heavy rain: 64.5 – 115.5, Very heavy rain: 115.6 – 204.4, Extremely heavy rain: 204.5 or more.





# OBSERVED AND FORECAST TRACK ALONGWITH CONE OF UNCERTAINTY OF DEPRESSION OVER SOUTHEAST BAY OF BENGAL BASED ON 0600 UTC OF 30<sup>TH</sup> NOVEMBER, 2020.



Activate Windows  
Go to Settings to activate Windows.

Leaflet | Powered by Esri | © 2020 UNO-IMD New Delhi

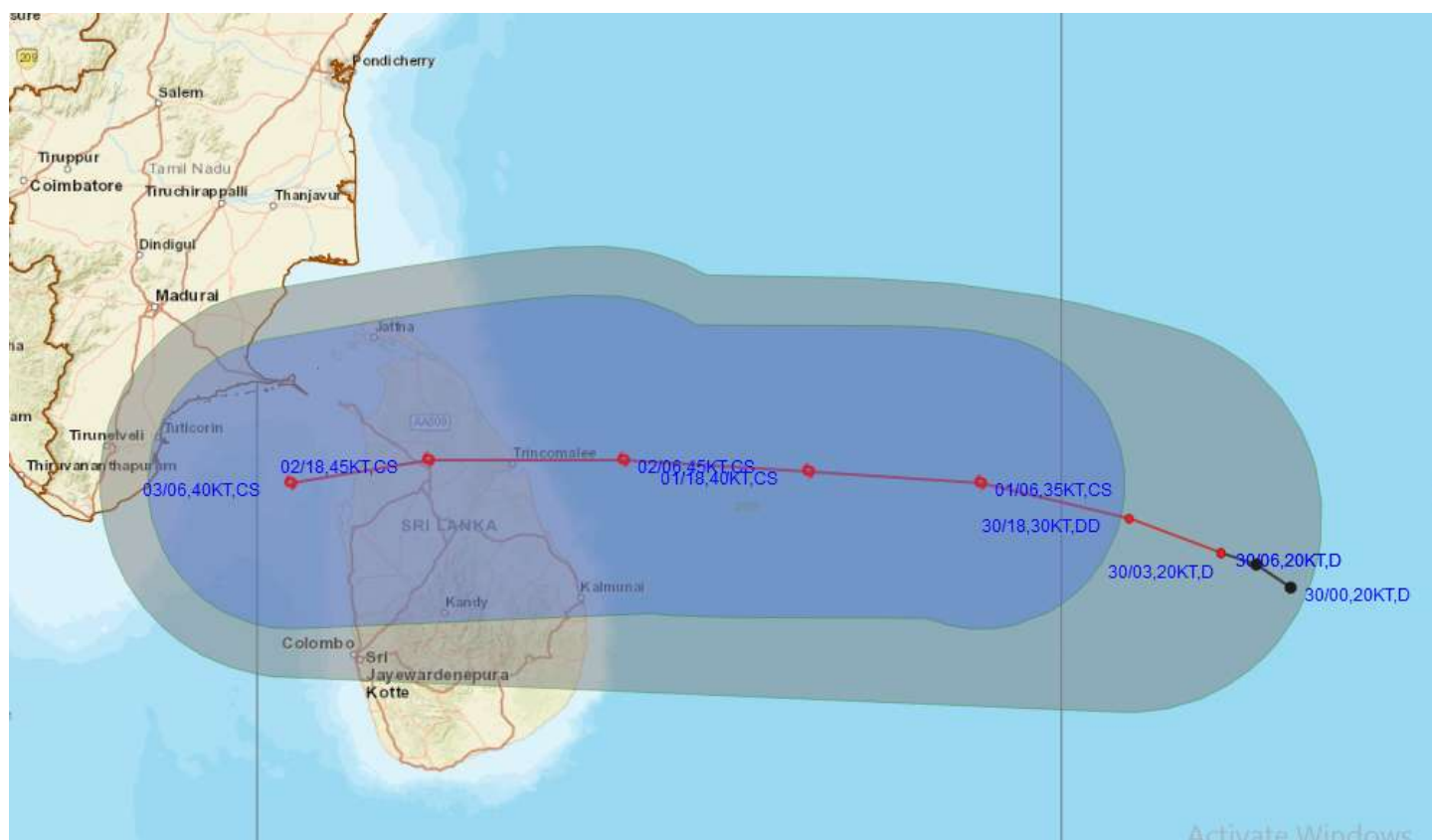
DATE/TIME IN UTC  
IST=UTC + 0530  
L: LOW PRESSURE AREA  
WML: WELL MARKED LOW PRESSURE AREA  
D: DEPRESSION (17-27 KT)  
DD: DEEP DEPRESSION (28-33 KT)  
CS: CYCLONIC STORM (34-47 KT)  
SCS: SEVERE CYCLONIC STORM (48-63KT)  
VSCS: VERY SEVERE CYCLONIC STORM (64-89 KT)  
ESCS: EXTREMELY SEVERE CYCLONIC STORM (90-119 KT)  
SuCS: SUPER CYCLONIC STORM ( $\geq 120$  KT)

- LESS THAN 34 KT
- 34-47 KT
- $\geq 48$  KT
- OBSERVED TRACK
- FORECAST TRACK
- CONE OF UNCERTAINTY

Spatial rainfall distribution: Isolated:  $\leq 25\%$ , A few: 26-50%, Many: 51-75%, Most: 76-100%  
Rainfall amount (mm): Heavy rain: 64.5 – 115.5, Very heavy rain: 115.6 – 204.4, Extremely heavy rain: 204.5 or more.



# OBSERVED AND FORECAST TRACK ALONGWITH QUADRANT WIND DISTRIBUTION OF DEPRESSION OVER SOUTHEAST BAY OF BENGAL BASED ON 0600 UTC OF 30<sup>TH</sup> NOVEMBER, 2020.



**DATE/TIME IN UTC**  
**IST=UTC + 0530**  
**L: LOW PRESSURE AREA**  
**WML: WELL MARKED LOW PRESSURE AREA**  
**D: DEPRESSION (17-27 KT)**  
**DD: DEEP DEPRESSION (28-33 KT)**  
**CS: CYCLONIC STORM (34-47 KT)**  
**SCS: SEVERE CYCLONIC STORM (48-63KT)**  
**VSCS: VERY SEVERE CYCLONIC STORM (64-89 KT)**  
**ESCS: EXTREMELY SEVERE CYCLONIC STORM (90-119 KT)**  
**SuCS: SUPER CYCLONIC STORM (≥ 120 KT)**

● LESS THAN 34 KT  
 6 34-47 KT  
 6 ≥ 48 KT  
 — OBSERVED TRACK  
 — FORECAST TRACK  
 ▲ CONE OF UNCERTAINTY  
**AREA OF MAXIMUM SUSTAINED WIND SPEED:**  
 28-33 KT (52-61 KMPH)  
 34-49 KT (62-91 KMPH)  
 50-63 KT (92-117 KMPH)  
 ≥ 64 KT (≥118 KMPH)

## IMPACT OVER THE SEA

| MSW (knot/kmph) | Impact                 | Action                                 |
|-----------------|------------------------|--|
| 28-33 (52-61)   | Very rough seas        | Total suspension of fishing operations |
| 34-49 (62-91)   | High to very high seas | Total suspension of fishing operations |
| 50-63 (92-117)  | Very high seas         | Total suspension of fishing operations |
| ≥ 64 (≥118)     | Phenomenal             | Total suspension of fishing operations |

Spatial rainfall distribution: Isolated: ≤25%, A few: 26-50%, Many: 51-75%, Most: 76-100%

Rainfall amount (mm): Heavy rain: 64.5 – 115.5, Very heavy rain: 115.6 – 204.4, Extremely heavy rain: 204.5 or more.