



**India Meteorological Department
(Ministry of Earth Sciences)**

BULLETIN NO. : 06(ARB/04/2020)

TIME OF ISSUE: 2000 HOURS IST

DATED: 22.11.2020

FROM: INDIA METEOROLOGICAL DEPARTMENT (FAX NO. 24643965/24699216/24623220)

TO: CONTROL ROOM, NDM, MINISTRY OF HOME AFFAIRS (FAX.NO. 23093750)

CONTROL ROOM NDMA (FAX.NO. 26701729)

CABINET SECRETARIAT (FAX.NO.23012284, 23018638)

PS TO HON'BLE MINISTER FOR S & T AND EARTH SCIENCES (FAX NO.23316745)

SECRETARY, MOES, (FAX NO. 24629777)

H.Q. (INTEGRATED DEFENCE STAFF AND CDS) (FAX NO. 23005137/23005147)

DIRECTOR GENERAL, DOORDARSHAN (23385843)

DIRECTOR GENERAL, AIR (23421105, 23421219)

PIB MOES (FAX NO. 23389042)

UNI (FAX NO. 23355841)

D.G. NATIONAL DISASTER RESPONSE FORCE (NDRF) (FAX NO. 26105912, 2436 3260)

DIRECTOR, PUNCTUALITY, INDIAN RAILWAYS (FAX NO. 23388503)

CHIEF SECRETARY, GOVT. OF MAHARASHTRA (FAX NO. 022 22028594)

CHIEF SECRETARY, GUJARAT (FAX NO.079-23250305)

CHIEF SECRETARY, DAMAN, DIU, NAGAR HAVELI (FAX NO.0260-2642702)

CHIEF SECRETARY, GOA (FAX NO. 0832-2415201)

CHIEF SECRETARY, KARNATAKA (FAX NO. 080-22256360)

CHIEF SECRETARY, KERALA (FAX NO. 0471-2327176)

CHIEF SECRETARY, LAKSHADWEEP ISLANDS (FAX NO. 04896-262184)

CHIEF SECRETARY, ANDAMAN & NICOBAR ISLANDS (FAX NO. 03192- 232656)

CHIEF SECRETARY, WEST BENGAL (FAX NO. 033-22144328)

CHIEF SECRETARY, GOVT. OF ODISHA (FAX NO. 0674 -2536660)

CHIEF SECRETARY, ANDHRA PRADESH (FAX NO. 0863-2441029, 08645-246600)

CHIEF SECRETARY, TAMIL NADU (FAX NO. 044-25672304)

CHIEF SECRETARY, PUDUCHERRY (FAX NO. 0413-2337575, 2334145)

CHIEF SECRETARY, TELANGANA (FAX NO. 040-23453700)

**Sub: (1) Well Marked Low Pressure area over southwest and adjoining southeast Bay of Bengal—
(Pre-cyclone Watch for Tamilnadu and Puducherry coasts)
(2) Very Severe Cyclonic Storm “GATI” over southwest Arabian Sea closed to Somalia coast**

**1. Well Marked Low Pressure area over southwest and adjoining southeast Bay of Bengal-
(Pre-cyclone Watch for Tamilnadu and Puducherry coasts)**

The well marked low pressure area over southwest & adjoining southeast Bay of Bengal persists. It is very likely to concentrate into a depression over Southwest Bay of Bengal during next 12 hours and intensify further into a cyclonic storm during subsequent 24 hours. It is very likely to move northwestwards and cross Tamil Nadu and Puducherry coasts between Karaikal and Mahabalipuram around 25th November 2020 noon/afternoon. The system while moving northwestwards, would skirt northeast Sri Lanka coast on 24th November, 2020.

Warnings:

(i) Rainfall

Under its influence, the rainfall activity is likely to increase over south peninsular India from 23rd November onwards with fairly widespread to widespread rainfall/thunderstorm activity over Tamilnadu, Puducherry & Karaikal during 24th to 26th November and over south Coastal Andhra Pradesh, Rayalaseema & Telangana during 25th to 26th November, 2020.

Spatial rainfall distribution: Isolated: ≤25%, A few: 26-50%, Many: 51-75%, Most: 76-100%

Rainfall amount (mm): Heavy rain: 64.5 – 115.5, Very heavy rain: 115.6 – 204.4, Extremely heavy rain: 204.5 or more.

Isolated extremely heavy rainfall activity also very likely over Tamilnadu & Puducherry during 24th & 25th and over south Coastal Andhra Pradesh & Rayalaseema on 25th & 26th and over Telangana on 26th November, 2020.

Sub-Divisions	22 Nov 2020*	23 Nov 2020*	24 Nov 2020*	25 Nov 2020*	26 Nov 2020*
Coastal Andhra Pradesh	Rainfall at isolated places	Rainfall at isolated places	Rainfall at a few places with heavy rainfall at isolated places	Rainfall at most places with isolated heavy to very heavy with extremely heavy falls	Rainfall at most places with isolated heavy to very heavy with extremely heavy falls
Tamilnadu, Puducherry & Karaikal	Rainfall at a few places	Rainfall at a many places with heavy rainfall at isolated places	Rainfall at most places with heavy to very heavy rainfall with extremely heavy falls at isolated places	Rainfall at most places with heavy to very heavy rainfall at a few places and extremely heavy falls at isolated places	Rainfall at a many places with heavy rainfall at isolated places
South Interior Karnataka	DRY	Rainfall at isolated places	Rainfall at a few places	Rainfall at a few places with heavy rainfall at isolated places	Rainfall at a few places
Rayalaseema	DRY	Rainfall at isolated places	Rainfall at a many places with isolated heavy falls	Rainfall at most places with heavy to very heavy rainfall with extremely heavy falls at isolated places	Rainfall at most places with heavy to very heavy rainfall with extremely heavy falls at isolated places
Telangana	DRY	DRY	Rainfall at isolated places	Rainfall at a few places with isolated heavy falls	Rainfall at most places with heavy to very heavy rainfall with extremely heavy falls at isolated places

(ii) Wind warning

Squally weather with wind speed reaching 40-50 kmph gusting to 60 kmph likely to prevail over Equatorial Indian Ocean & adjoining central parts of South Bay of Bengal on 22nd November. It is likely to increase with wind speed of the order of 45-55 kmph gusting to 65 kmph likely over Southwest & adjoining west-central Bay of Bengal and along & off Tamil Nadu and south Andhra Pradesh coasts on 23rd and of the order of 55-65 kmph gusting to 75 kmph likely over the same area and also along & off South Andhra Pradesh coast and over Gulf of Mannar on 24th November. It is very likely to increase gradually becoming 80-90 kmph gusting 100 kmph over southwest Bay of Bengal, and along and off Tamilnadu and Puducherry coasts around the region of landfall on 25th November 2020. Squally weather with wind speed reaching 55-65 kmph gusting to 75 kmph likely to prevail over Andhra Pradesh coast on 25th November 2020.

(iii) Sea condition

Sea condition will be rough to very rough over Equatorial Indian Ocean & adjoining central parts of South Bay of Bengal on 22nd; Southwest & adjoining west-central Bay of Bengal and along & off Tamil Nadu &

Spatial rainfall distribution: Isolated: ≤25%, A few: 26-50%, Many: 51-75%, Most: 76-100%

Rainfall amount (mm): Heavy rain: 64.5 – 115.5, Very heavy rain: 115.6 – 204.4, Extremely heavy rain: 204.5 or more.

Puducherry coasts on 23rd and very rough to High over Southwest and adjoining west-central Bay of Bengal and along & off Tamil Nadu, Puducherry & south Andhra Pradesh coasts and also over Gulf of Mannar on 24th and 25th November, 2020.

(iv) Fishermen Warning

Fishermen are advised not to venture into Equatorial Indian Ocean & adjoining central parts of South Bay of Bengal on 22nd November; over Southwest & adjoining west-central Bay of Bengal, Gulf of Mannar and along & off Tamil Nadu, Puducherry and south Andhra Pradesh coasts during 22-25th November.

Also the fishermen out at Sea are advised to return to the coast by today.

2. Very Severe Cyclonic Storm "GATI" over southwest Arabian Sea

The very severe cyclonic storm "GATI" over southwest Arabian Sea moved westwards with a speed of about 18kmph during past 06 hours and lay centred at 1730 hrs IST of today 22nd November 2020 over southwest Arabian Sea near Latitude 10.4° N and Longitude 51.5°E, about 40 km east of Somalia coast and 90 km south-southeast of Ras Binnah (Somalia). It is very likely to move nearly westwards and cross Somalia coast around 10.5°N to the south of Ras Binnah (Somalia) within next three hours as a very severe cyclonic storm with a wind speed of 130-140 kmph gusting to 155 kmph.

Forecast track and intensity are given below:

Date/Time(IST)	Position (Lat. °N/ long. °E)	Maximum sustained surface wind speed (Kmph)	Category of cyclonic disturbance
22.11.20/1730	10.4/51.5	130-140 Gusting TO 155	Very Severe Cyclonic Storm
22.11.20/2300	10.5/50.6	120-130 Gusting TO 145	Very Severe Cyclonic Storm
23.11.20/0530	10.6/49.5	90-100 Gusting TO 110	Severe Cyclonic Storm
23.11.20/1130	10.6/48.4	60-70 Gusting TO 80	Cyclonic Storm
23.11.20/1730	10.6/47.3	40-50 Gusting TO 60	Depression
24.11.20/0530	10.5/45.1	20-30 Gusting TO 40	Low Pressure Area

As the system is very likely to move away from the Indian coast no adverse weather associated with this system is likely over the west coast of India. However, warnings for Ship and Fishermen prevail over southwest Arabian Sea as specified below.

(i) Wind warning

Gale wind speed reaching 130-140 kmph gusting to 155 kmph is prevailing over southwest Arabian Sea and along and off north Somalia coast. It is very likely to continue with same speed for next 06 hours. It will gradually decrease thereafter becoming 50-60 kmph gusting to 70 kmph over this area by 23rd November morning.

(ii) Sea condition

Sea condition will be phenomenal over southwest Arabian Sea along and off north Somalia coast during next 06 hours and thereafter it will be very high to high till 23rd November morning and improve thereafter.

(iii) Fishermen Warning

Fishermen are advised not to venture into southwest Arabian Sea till 23rd November noon.

The next bulletin will be issued at 2330 hrs IST of 22nd November, 2020.

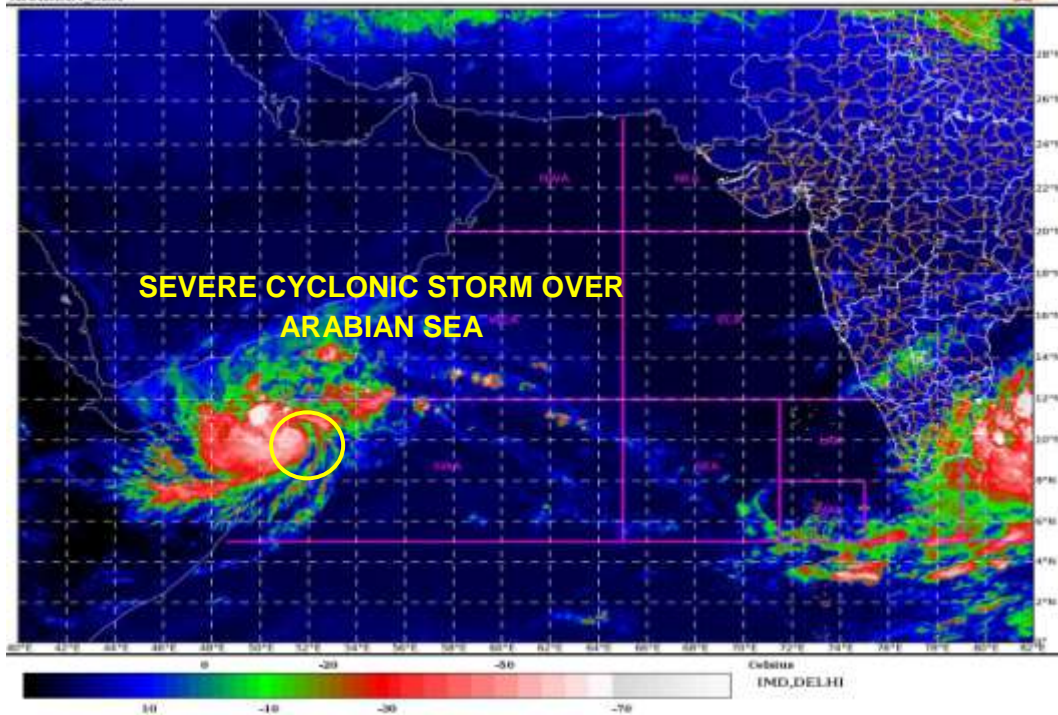
(R. K. Jenamani)
Scientist-F, RSMC, New Delhi

Copy to: ACWC Kolkata/Chennai/CWC Bhubaneswar/CWC Visakhapatnam/CWC
Thiruvananthapuram

Spatial rainfall distribution: Isolated: ≤25%, A few: 26-50%, Many: 51-75%, Most: 76-100%
Rainfall amount (mm): Heavy rain: 64.5 – 115.5, Very heavy rain: 115.6 – 204.4, Extremely heavy rain: 204.5 or more.

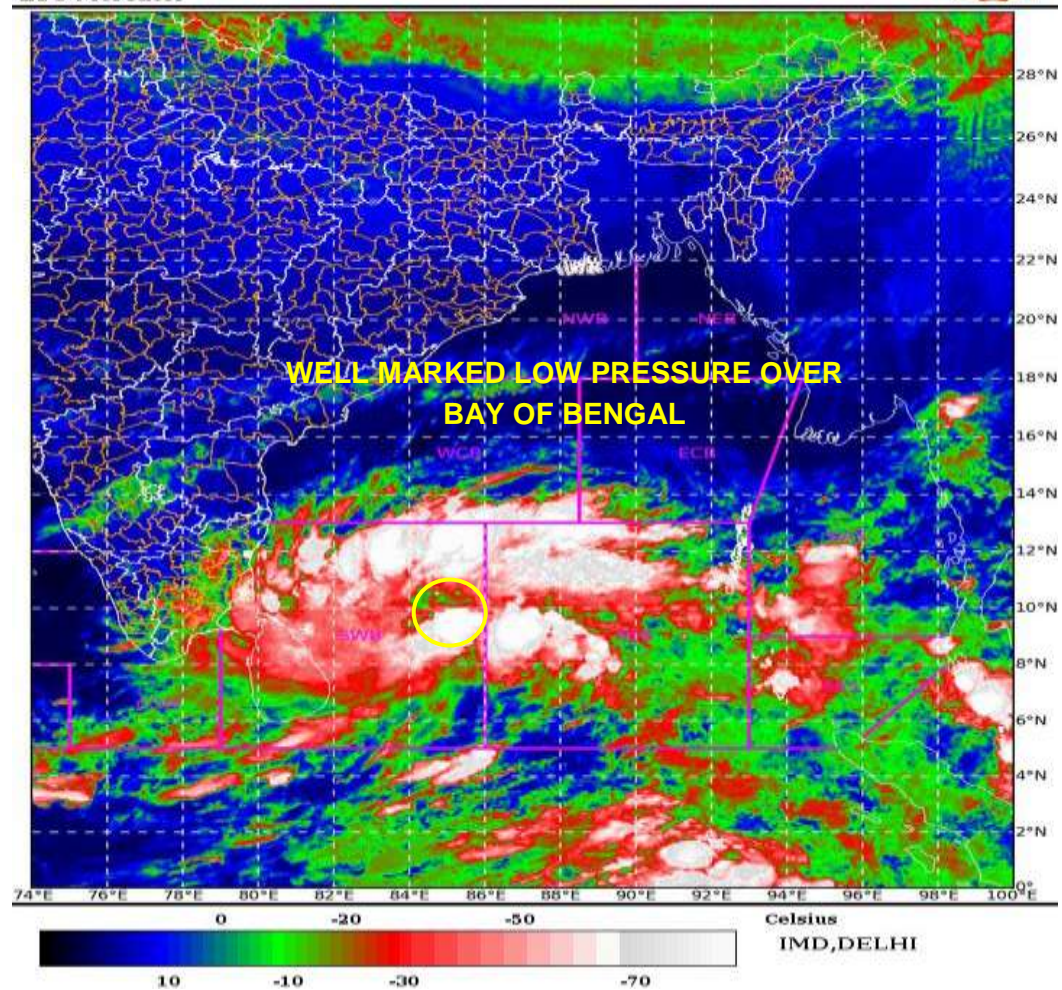
SAT : INSAT-3DR IMG
 IMG_TIR1_TEMP 10.8 um
 ARABIAN SEA

22-11-2020(1345 to 1411) GMT
 22-11-2020(1915 to 1941) IST



SAT : INSAT-3DR IMG
 IMG_TIR1_TEMP 10.8 um
 L1C Mercator

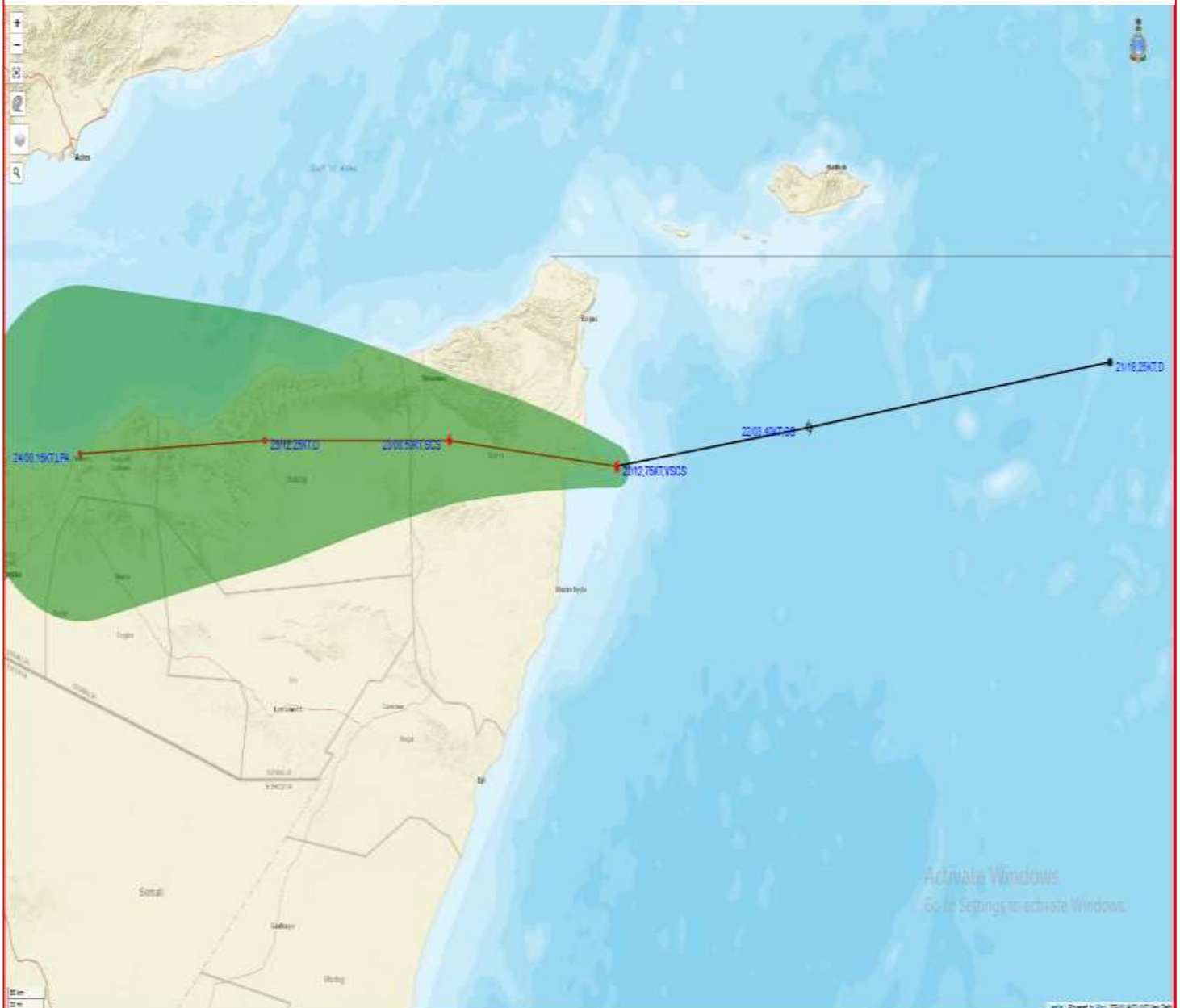
22-11-2020/(1400 to 1426) GMT
 22-11-2020/(1930 to 1956) IST



Spatial rainfall distribution: Isolated: $\leq 25\%$, A few: 26-50%, Many: 51-75%, Most: 76-100%
 Rainfall amount (mm): Heavy rain: 64.5 – 115.5, Very heavy rain: 115.6 – 204.4, Extremely heavy rain: 204.5 or more.



OBSERVED AND FORECAST TRACK ALONGWITH CONE OF UNCERTAINTY OF SEVERE CYCLONIC STORM GATI OVER SOUTHWEST ARABIAN SEA BASED ON 1200 UTC OF 22nd Nov, 2020



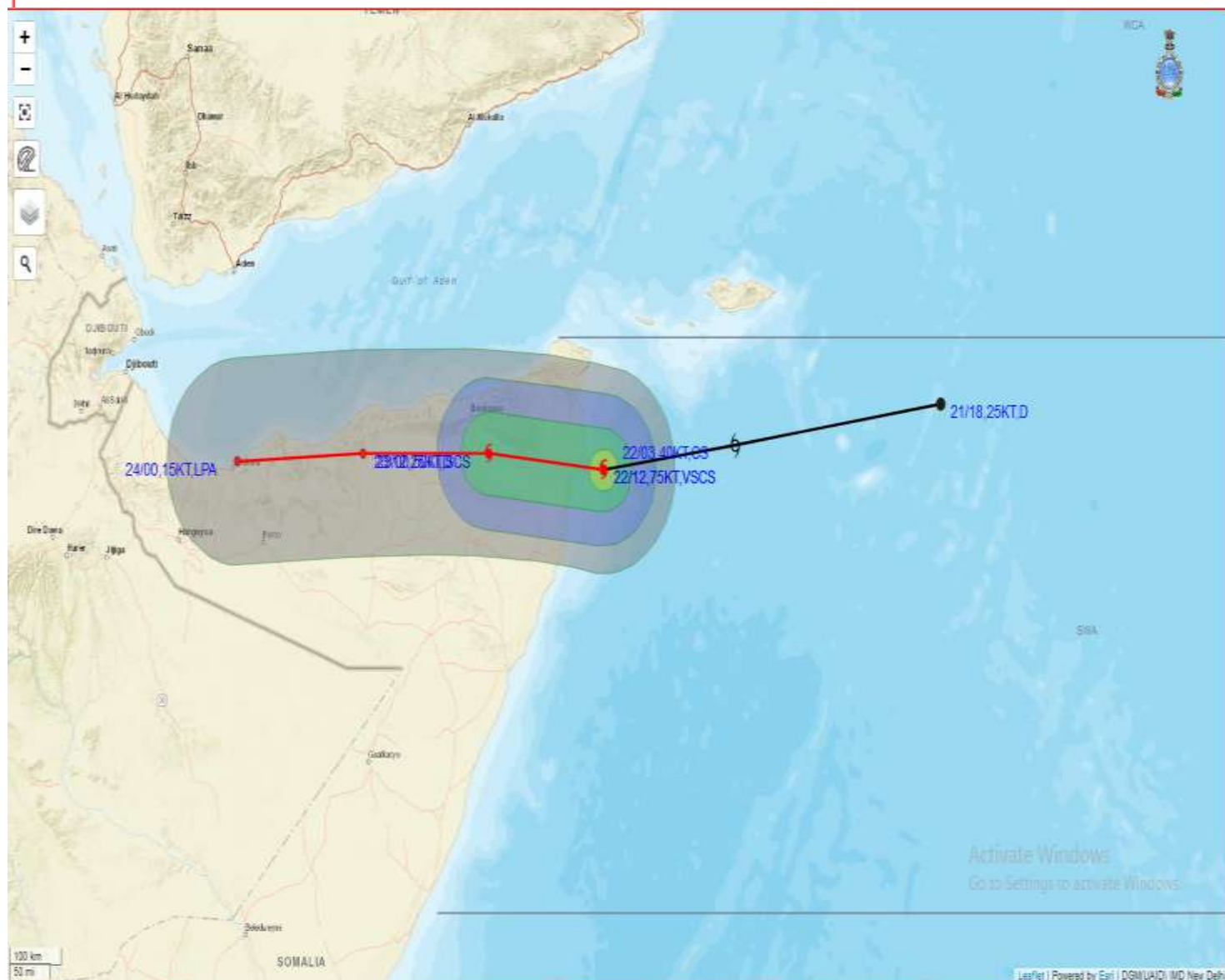
DATE/TIME IN UTC
IST=UTC + 0530
L: LOW PRESSURE AREA
WML: WELL MARKED LOW PRESSURE AREA
D: DEPRESSION (17-27 KT)
DD: DEEP DEPRESSION (28-33 KT)
CS: CYCLONIC STORM (34-47 KT)
SCS: SEVERE CYCLONIC STORM (48-63KT)
VSCS: VERY SEVERE CYCLONIC STORM (64-89 KT)
ESCS: EXTREMELY SEVERE CYCLONIC STORM (90-119 KT)
SuCS: SUPER CYCLONIC STORM (≥ 120 KT)

● LESS THAN 34 KT
● 34-47 KT
● ≥ 48 KT
■ OBSERVED TRACK
■ FORECAST TRACK
▲ CONE OF UNCERTAINTY

Spatial rainfall distribution: Isolated: $\leq 25\%$, A few: 26-50%, Many: 51-75%, Most: 76-100%
Rainfall amount (mm): Heavy rain: 64.5 – 115.5, Very heavy rain: 115.6 – 204.4, Extremely heavy rain: 204.5 or more.



OBSERVED AND FORECAST TRACK OF DEPRESSION ALONGWITH QUADRANT WIND DISTRIBUTION OF SEVERE CYCLONIC STORM GATI OVER SOUTHWEST ARABIAN SEA BASED ON 1200UTC OF 22nd



DATE/TIME IN UTC
IST=UTC +0530
L: LOW PRESSURE AREA
WML: WELL MARKED LOW PRESSURE AREA
D: DEPRESSION (17-27 KT)
DD: DEEP DEPRESSION (28-33 KT)
CS: CYCLONIC STORM (34-47 KT)
SCS: SEVERE CYCLONIC STORM (48-63KT)
VSCS: VERY SEVERE CYCLONIC STORM (64-89 KT)
ESCS: EXTREMELY SEVERE CYCLONIC STORM (90-119 KT)
SuCS: SUPER CYCLONIC STORM (≥20 KT)

● LESS THAN 34 KT
⚡ 34-47 KT
● ≥ 48 KT
— OBSERVED TRACK
— FORECAST TRACK
▲ CONE OF UNCERTAINTY
AREA OF MAXIMUM SUSTAINED WIND SPEED:
■ 28-33 KT (52-61 KMPH)
■ 34-49 KT (62-91 KMPH)
■ 50-63 KT (92-117 KMPH)
■ ≥ 64 KT (≥118 KMPH)

IMPACT OVER THE SEA

MSW (knot/kmph)	Impact	Action
28-33 (52-61)	Very rough seas	Total suspension of fishing operations
34-49 (62-91)	High to very high seas	Total suspension of fishing operations
50-63 (92-117)	Very high seas	Total suspension of fishing operations
≥ 64 (≥118)	Phenomenal	Total suspension of fishing operations

Spatial rainfall distribution: Isolated: ≤25%, A few: 26-50%, Many: 51-75%, Most: 76-100%

Rainfall amount (mm): Heavy rain: 64.5 – 115.5, Very heavy rain: 115.6 – 204.4, Extremely heavy rain: 204.5 or more.