



**India Meteorological Department
Earth System Science
Organisation
(Ministry of Earth Sciences)**

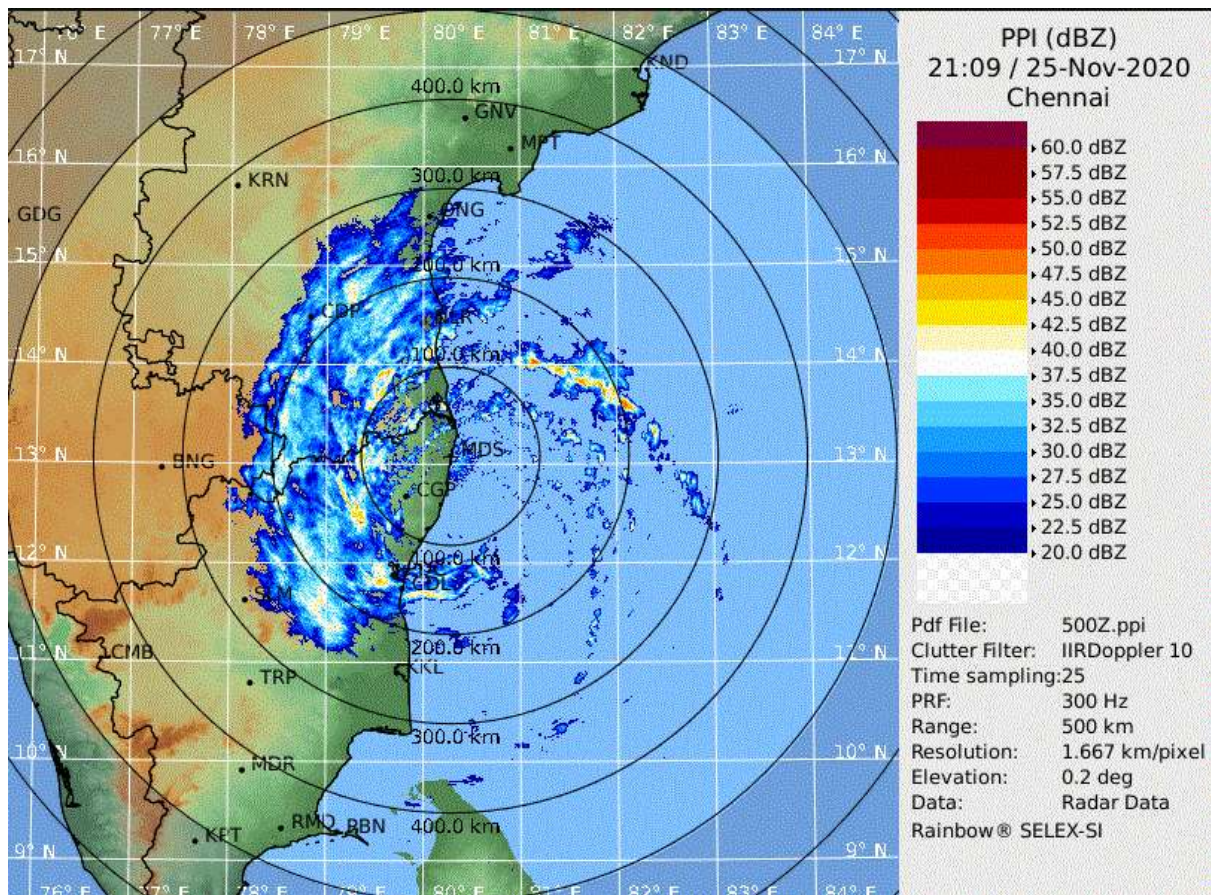
HOURLY UPDATE ON VERY SEVERE CYCLONIC STORM “NIVAR”

BULLETIN NO. 10

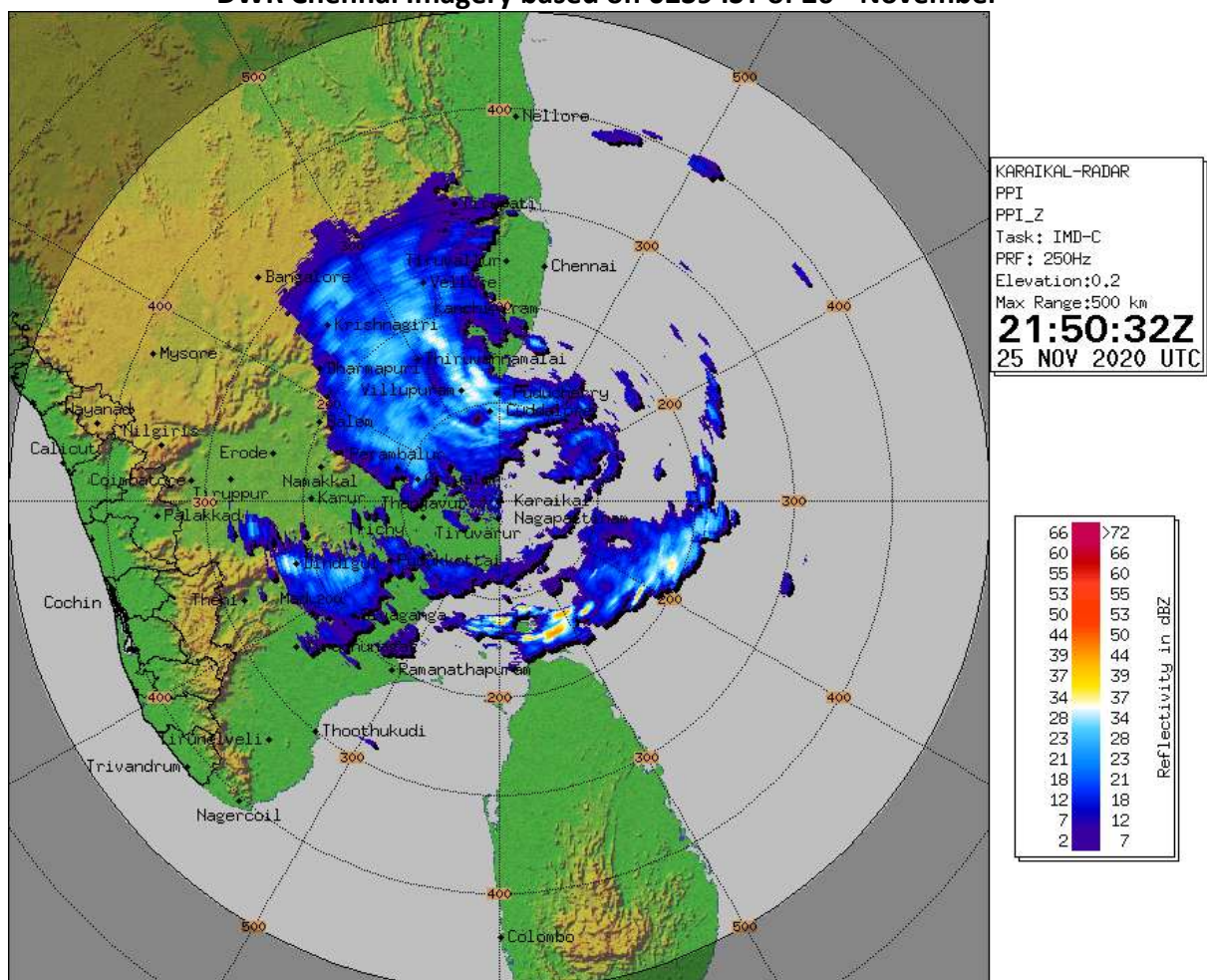
DATE: 26-11-2020

TIME OF ISSUE: 0345 HRS IST

DATE/TIME (IST) OF OBSERVATION	0230 HRS IST OF 26-11-2020 / 2100 UTC OF 25.11.2020
LANDFALL POINT, LANDFALL TIME AND INTENSITY AT THE TIME OF LANDFALL	THE CYCLONE ‘NIVAR’ CROSSED TAMILNADU & PUDUCHERRY COASTS NEAR PUDUCHERRY (NEAR LAT. 12.1°N AND LONG. 79.9°) DURING 2330 IST OF 25 TH NOV TO 0230 IST OF 26 TH NOV. AS A VERY SEVERE CYCLONIC STORM WITH ESTIMATED WIND SPEED OF 120-130 KMPH.
CURRENT LOCATION LATITUDE/LONGITUDE	LAY CENTERED OVER COASTAL TAMILNADU & PUDUCHERRY NEAR LAT. 12.1°N AND LONG. 79.9°E , NEAR PUDUCHERRY.
CURRENT INTENSITY	VERY SEVERE CYCLONIC STORM ‘NIVAR’ WEAKENED AND LAY AS A SEVERE CYCLONIC STORM WITH WIND SPEED OF 100-110 KMPH GUSTING TO 120 KMPH.
OBSERVATIONS FROM THE COAST	<u>.RAINFALL (MM) DURING 08:30 HOURS IST OF 25TH NOV TO 0230 HOURS IST OF 26TH NOVEMBER 2020:</u> NAGAPATNAM-63, KARAİKAL-86, CUDDALORE-246, PUDUCHERRY-237 AND CHENNAI-83.
FORECAST MOVEMENT AND INTENSITY	SEVERE CYCLONIC STORM ‘NIVAR’ WOULD CONTINUE TO MOVE NORTH-NORTHWEST WARDS AND WEAKEN FURTHER INTO A CYCLONIC STORM DURING NEXT 06 HOURS.



DWR Chennai Imagery based on 0239 IST of 26th November



DWR Karaikal Imagery based on 0320 IST of 26th November

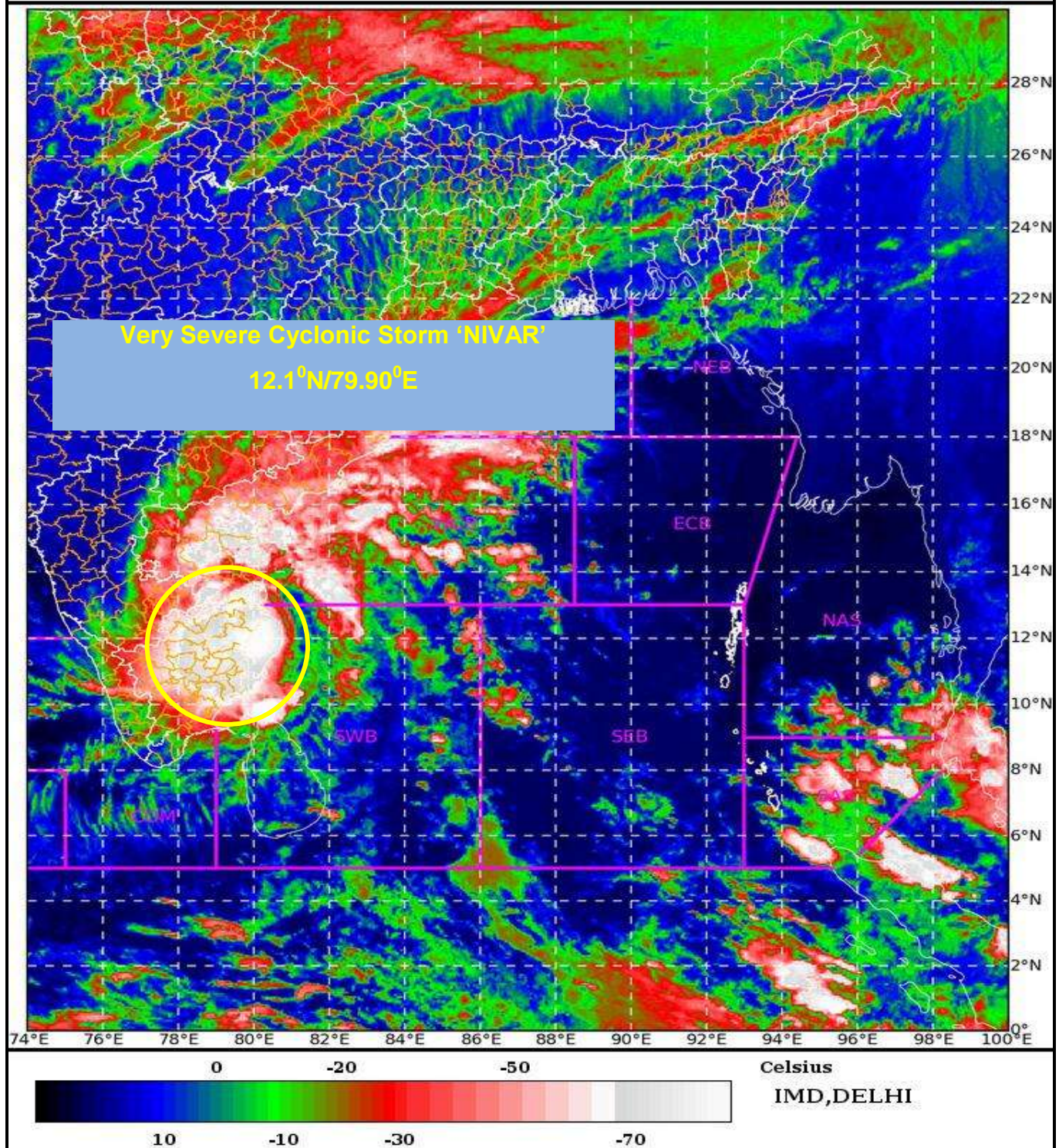
SAT : INSAT-3D IMG

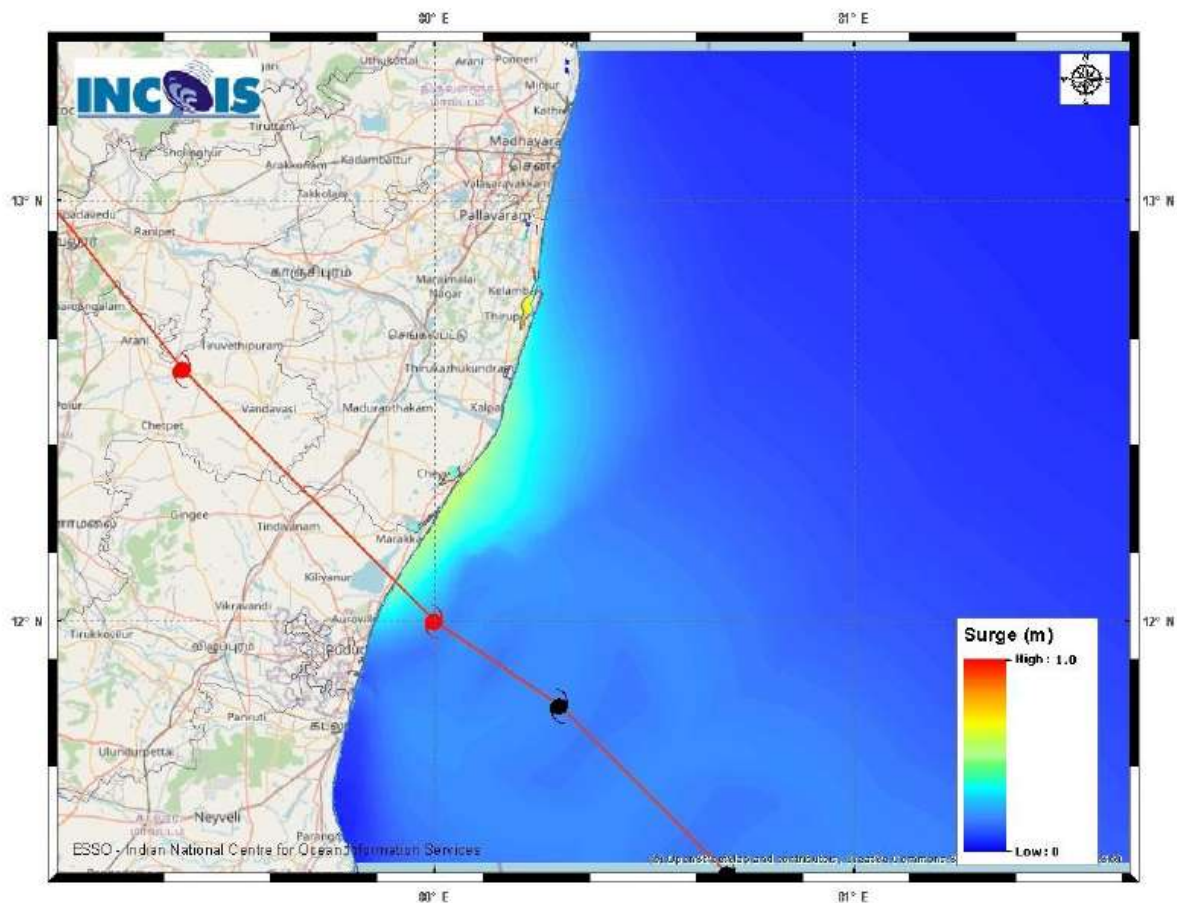
25-11-2020/(2030 to 2056) GMT

IMG_TIR1_TEMP 10.8 um

26-11-2020/(0200 to 0226) IST

L1C Mercator





Expected Maximum Storm Surge *
Expected Maximum Inundation Extent

1.0 m Near Kancheepuram Tamil Nadu
0.2 Km Near Kancheepuram Tamil Nadu

STORM SURGE HEIGHT INFORMATION:

* The below listed surge heights are over and above astronomical tide.

MANDAL/TALUK	DISTRICT	STATE / UNION TERRITORY	NEAREST PLACE OF HABITATION	STORM SURGE (m) *	EXPECTED INUNDATION EXTENT (km)
Chengalpattu	Kancheepuram	Tamil Nadu	Thiruporur	0.5-1.0	Upto 0.2
Cheyyur	Kancheepuram	Tamil Nadu	Kadalur	0.4-0.8	Nil
Mannargudi	Thiruvavur	Tamil Nadu	Thiruvavur	0.2-0.5	Upto 0.1
Tindivanam	Viluppuram	Tamil Nadu	Ozhukarai Municipality	0.5-0.6	Upto 0.1
Tirutturaippundi	Nagapattinam	Tamil Nadu	Vaimedu west	0.2-0.5	Upto 0.1



OBSERVED AND FORECAST TRACK ALONGWITH CONE OF UNCERTAINTY OF VERY SEVERE CYCLONIC STORM 'NIVAR' OVER SOUTHWEST BAY OF BENGAL BASED ON 1800 UTC OF 25TH NOVEMBER, 2020.

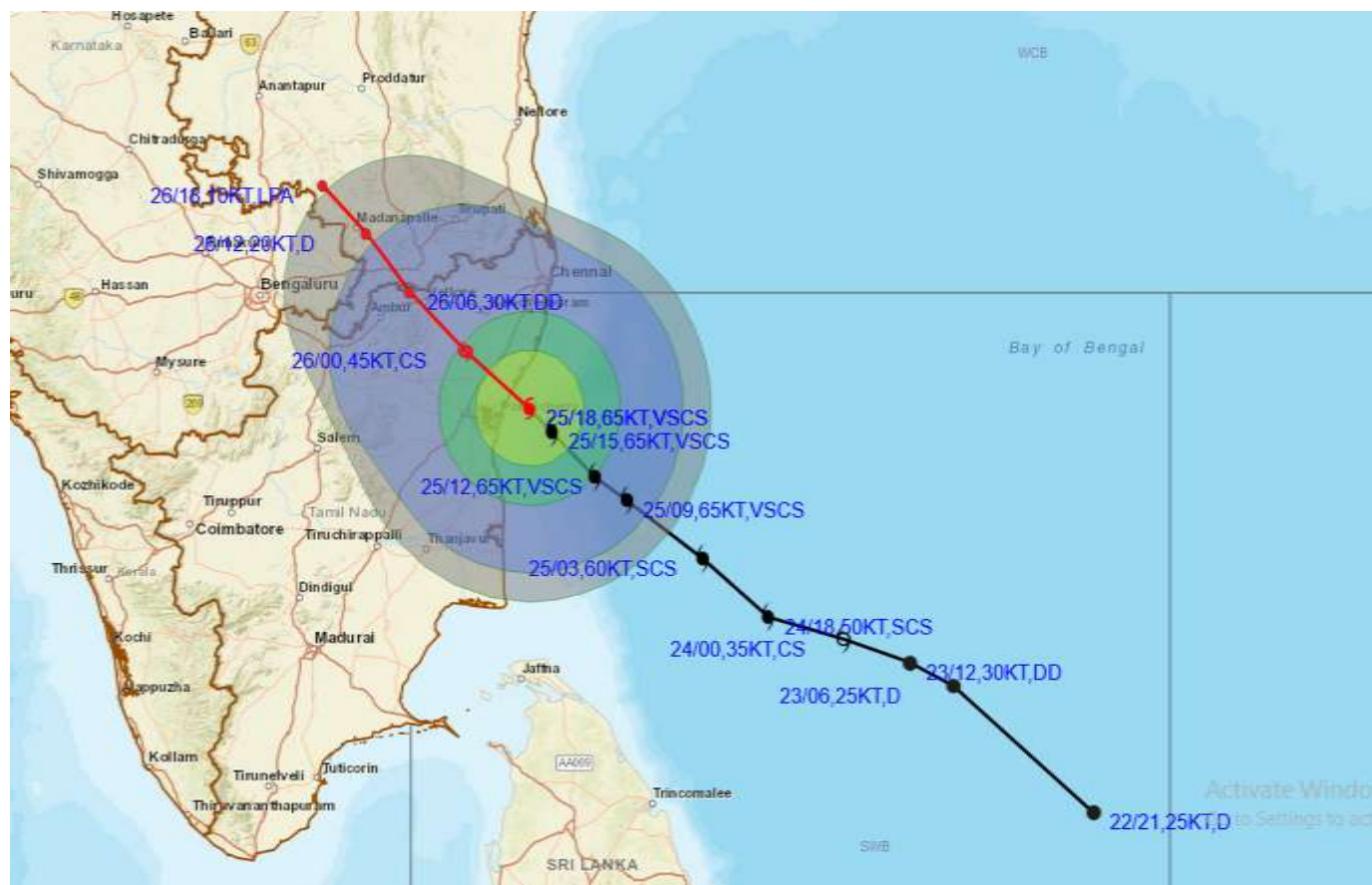


DATE/TIME IN UTC
 IST=UTC + 0530
 L: LOW PRESSURE AREA
 WML: WELL MARKED LOW PRESSURE AREA
 D: DEPRESSION (17-27 KT)
 DD: DEEP DEPRESSION (28-33 KT)
 CS: CYCLONIC STORM (34-47 KT)
 SCS: SEVERE CYCLONIC STORM (48-63 KT)
 VSCS: VERY SEVERE CYCLONIC STORM (64-89 KT)
 ESCS: EXTREMELY SEVERE CYCLONIC STORM (90-119 KT)
 SuCS: SUPER CYCLONIC STORM (≥ 120 KT)

● LESS THAN 34 KT
 ⤵ 34-47 KT
 ⤵ ≥ 48 KT
 — OBSERVED TRACK
 — FORECAST TRACK
 ▲ CONE OF UNCERTAINTY



OBSERVED AND FORECAST TRACK ALONGWITH QUADRANT WIND DISTRIBUTION OF VERY SEVERE CYCLONIC STORM 'NIVAR' OVER SOUTHWEST BAY OF BENGAL BASED ON 1800 UTC OF 25TH NOVEMBER, 2020



DATE/TIME IN UTC
 IST=UTC + 0530
 L: LOW PRESSURE AREA
 WML: WELL MARKED LOW PRESSURE AREA
 D: DEPRESSION (17-27 KT)
 DD: DEEP DEPRESSION (28-33 KT)
 CS: CYCLONIC STORM (34-47 KT)
 SCS: SEVERE CYCLONIC STORM (48-63KT)
 VSCS: VERY SEVERE CYCLONIC STORM (64-89 KT)
 ESCS: EXTREMELY SEVERE CYCLONIC STORM (90-119 KT)
 SuCS: SUPER CYCLONIC STORM (≥ 120 KT)

● LESS THAN 34 KT
 ○ 34.47 KT
 ● ≥ 48 KT
 — OBSERVED TRACK
 — FORECAST TRACK
 — CONE OF UNCERTAINTY
 AREA OF MAXIMUM SUSTAINED WIND SPEED:
 ■ 28-33 KT (52-61 KMPH)
 ■ 34-49 KT (62-91 KMPH)
 ■ 50-63 KT (92-117 KMPH)
 ■ ≥ 64 KT (≥ 118 KMPH)

IMPACT OVER THE SEA

MSW (knot/kmph)	Impact	Action
28-33 (52-61)	Very rough seas	Total suspension of fishing operations
34-49 (62-91)	High to very high seas	Total suspension of fishing operations
50-63 (92-117)	Very high seas	Total suspension of fishing operations
≥ 64 (≥ 118)	Phenomenal	Total suspension of fishing operations