



**India Meteorological Department  
Earth System Science  
Organisation  
(Ministry of Earth Sciences)**

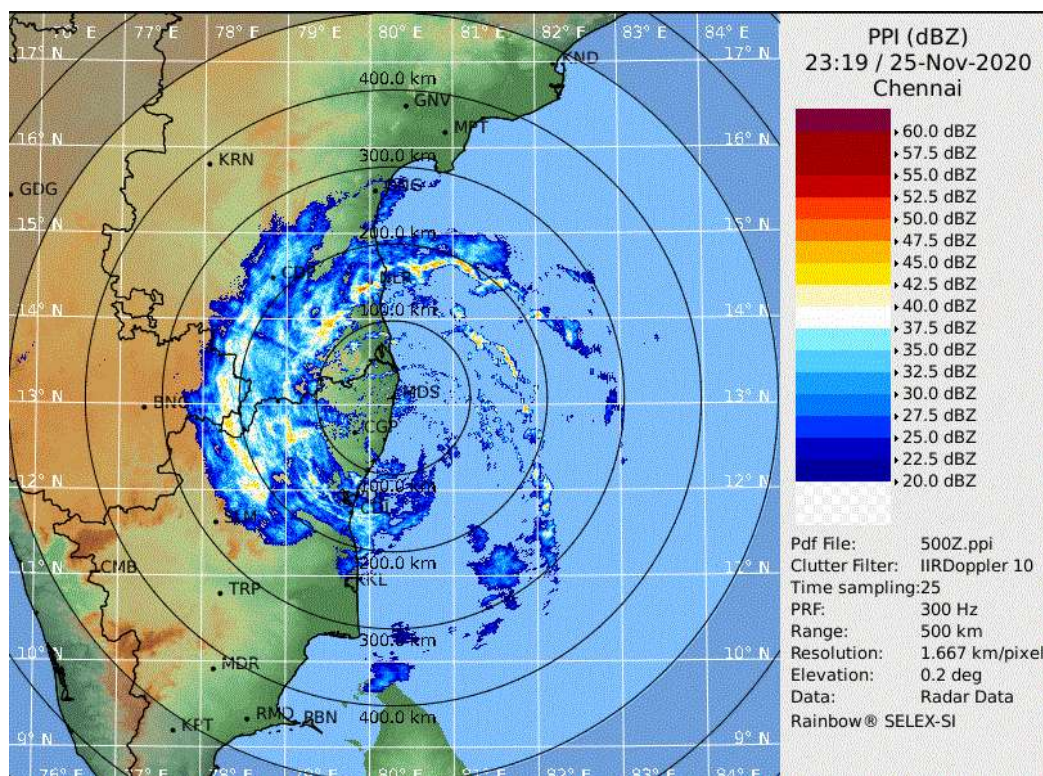
**HOURLY UPDATE ON SEVERE CYCLONIC STORM “NIVAR”**

**BULLETIN NO. 12**

DATE: 26-11-2020

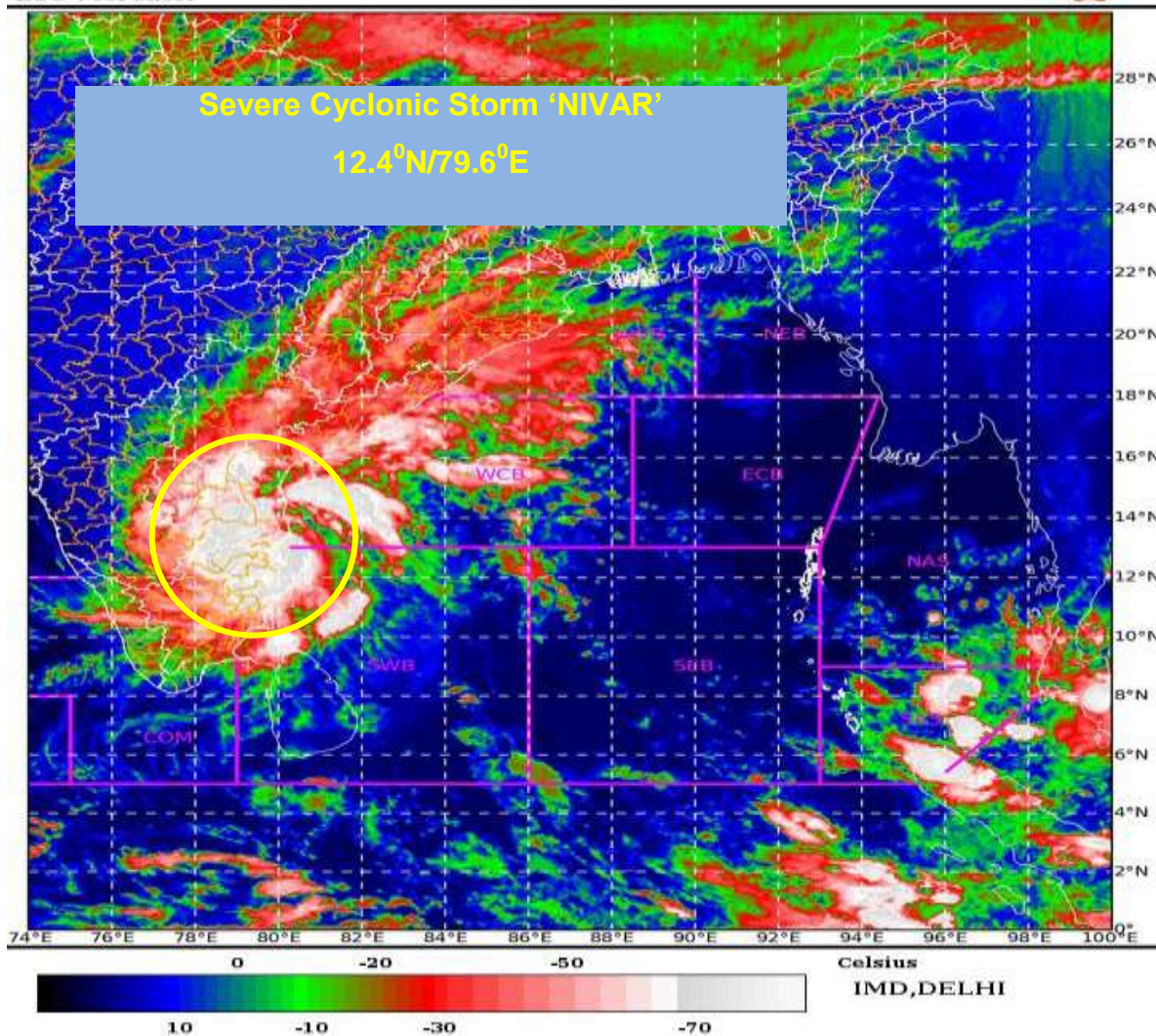
TIME OF ISSUE: 0545 HRS IST

<b>DATE/TIME (IST) OF OBSERVATION</b>	<b>0330 HRS IST OF 26-11-2020 / 2200 UTC OF 25.11.2020</b>
<b>CURRENT LOCATION LATITUDE/LONGITUDE</b>	LAY CENTERED OVER NORTH COASTAL TAMILNADU NEAR <b>LAT. 12.4°N AND LONG. 79.6°E</b> , ABOUT 50 KM NORTH- NORTHWEST OF PUDUCHERRY.
<b>CURRENT INTENSITY</b>	SEVERE CYCLONIC STORM WITH WIND SPEED OF 85-95 KMPH GUSTING TO 105 KMPH.
<b>OBSERVATIONS FROM THE COAST</b>	<u><b>.RAINFALL (MM) DURING 08:30 HOURS IST OF 25<sup>TH</sup> NOV TO 0230 HOURS IST OF 26<sup>TH</sup> NOVEMBER 2020:</b></u> NAGAPATNAM-63, KARAİKAL-86, CUDDALORE-246, PUDUCHERRY-237 AND CHENNAI-89.
<b>FORECAST MOVEMENT AND INTENSITY</b>	SEVERE CYCLONIC STORM ‘NIVAR’ WOULD MOVE NORTHWEST WARDS AND WEAKEN FURTHER INTO A CYCLONIC STORM DURING NEXT 03 HOURS.

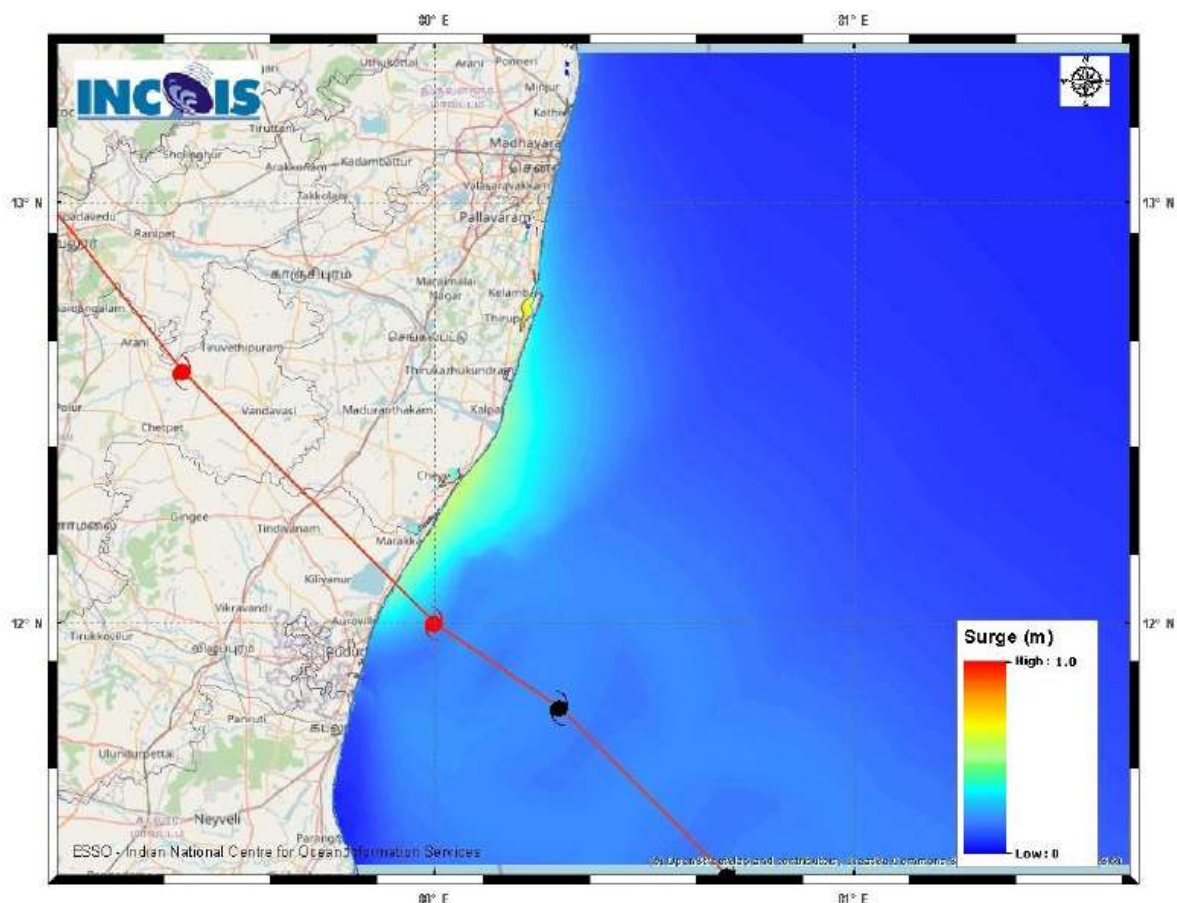


**DWR Chennai Imagery based on 0459 IST of 26<sup>th</sup> November**

SAT : INSAT-3D IMG      25-11-2020/(2300 to 2326) GMT  
 IMG\_TIR1\_TEMP 10.8 um    26-11-2020/(0430 to 0456) IST  
 LIC Mercator







Expected Maximum Storm Surge \*  
Expected Maximum Inundation Extent

1.0 m Near Kancheepuram Tamil Nadu  
0.2 Km Near Kancheepuram Tamil Nadu

### STORM SURGE HEIGHT INFORMATION:

\* The below listed surge heights are over and above astronomical tide.

MANDAL/TALUK	DISTRICT	STATE / UNION TERRITORY	NEAREST PLACE OF HABITATION	STORM SURGE (m) *	EXPECTED INUNDATION EXTENT (km)
Chengalpattu	Kancheepuram	Tamil Nadu	Thiruporur	0.5-1.0	Upto 0.2
Cheyyur	Kancheepuram	Tamil Nadu	Kadalur	0.4-0.8	Nil
Mannargudi	Thiruvavur	Tamil Nadu	Thiruvavur	0.2-0.5	Upto 0.1
Tindivanam	Viluppuram	Tamil Nadu	Ozhukarai Municipality	0.5-0.6	Upto 0.1
Tirutturaippundi	Nagapattinam	Tamil Nadu	Vaimedu west	0.2-0.5	Upto 0.1



**OBSERVED AND FORECAST TRACK ALONGWITH CONE OF UNCERTAINTY OF SEVERE CYCLONIC STORM' NIVAR' OVER SOUTHWEST BAY OF BENGAL BASED ON 2100 UTC OF 25<sup>TH</sup> NOVEMBER, 2020.**



DATE/TIME IN UTC  
IST=UTC + 0530  
L: LOW PRESSURE AREA  
WML: WELL MARKED LOW PRESSURE AREA  
D: DEPRESSION (17-27 KT)  
DD: DEEP DEPRESSION (28-33 KT)  
CS: CYCLONIC STORM (34-47 KT)  
SCS: SEVERE CYCLONIC STORM (48-63KT)  
VSCS: VERY SEVERE CYCLONIC STORM (64-89 KT)  
ESCS: EXTREMELY SEVERE CYCLONIC STORM (90-119 KT)  
SuCS: SUPER CYCLONIC STORM ( $\geq 120$  KT)

● LESS THAN 34 KT  
⌀ 34-47 KT  
⌀ ≥ 48 KT  
— OBSERVED TRACK  
— FORECAST TRACK  
▲ CONE OF UNCERTAINTY





# OBSERVED AND FORECAST TRACK ALONGWITH QUADRANT WIND DISTRIBUTION OF SEVERE CYCLONIC STORM 'NIVAR' OVER SOUTHWEST BAY OF BENGAL BASED ON 2100 UTC OF 25<sup>TH</sup> NOVEMBER, 2020



DATE/TIME IN UTC  
 IST=UTC + 0530  
 L: LOW PRESSURE AREA  
 WML: WELL MARKED LOW PRESSURE AREA  
 D: DEPRESSION (17-27 KT)  
 DD: DEEP DEPRESSION (28-33 KT)  
 CS: CYCLONIC STORM (34-47 KT)  
 SCS: SEVERE CYCLONIC STORM (48-63KT)  
 VSCS: VERY SEVERE CYCLONIC STORM (64-89 KT)  
 ESCS: EXTREMELY SEVERE CYCLONIC STORM (90-119 KT)  
 SuCS: SUPER CYCLONIC STORM ( $\geq 120$  KT)

● LESS THAN 34 KT  
 6 34-47 KT  
 6  $\geq 48$  KT  
 — OBSERVED TRACK  
 — FORECAST TRACK  
 — CONE OF UNCERTAINTY  
 AREA OF MAXIMUM SUSTAINED WIND SPEED:  
 28-33 KT (52-61 KMPH)  
 34-49 KT (62-91 KMPH)  
 50-63 KT (92-117 KMPH)  
 $\geq 64$  KT ( $\geq 118$  KMPH)

## IMPACT OVER THE SEA

MSW (knot/kmph)	Impact	Action
28-33 (52-61)	Very rough seas	Total suspension of fishing operations
34-49 (62-91)	High to very high seas	Total suspension of fishing operations
50-63 (92-117)	Very high seas	Total suspension of fishing operations
$\geq 64$ ( $\geq 118$ )	Phenomenal	Total suspension of fishing operations