



**India Meteorological Department  
Earth System Science  
Organisation  
(Ministry of Earth Sciences)**

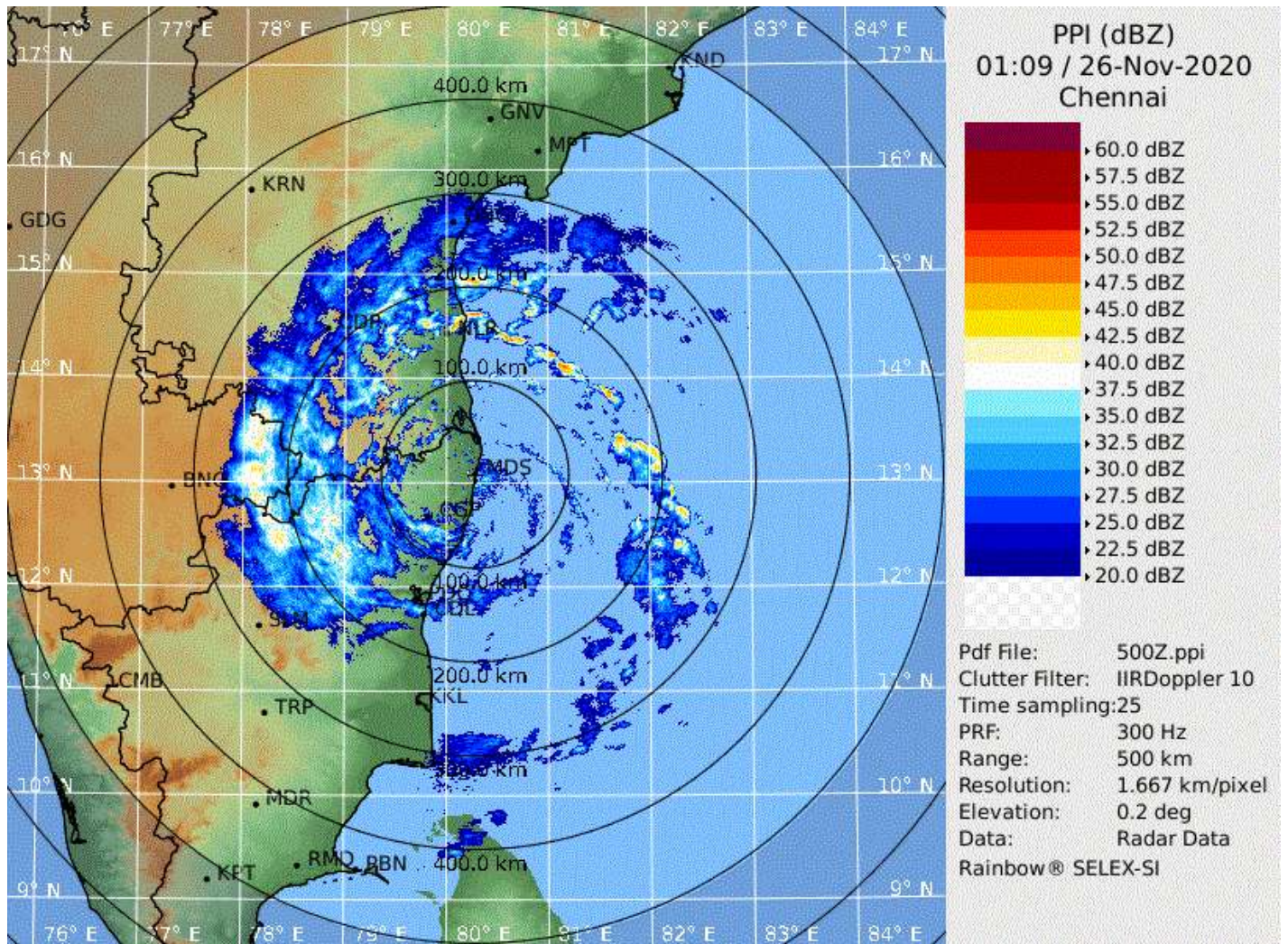
**HOURLY UPDATE ON SEVERE CYCLONIC STORM “NIVAR”**

**BULLETIN NO. 13**

DATE: 26-11-2020

TIME OF ISSUE: 0645 HRS IST

<b>DATE/TIME (IST) OF OBSERVATION</b>	<b>0530 HRS IST OF 26-11-2020 / 0000 UTC OF 26.11.2020</b>
<b>CURRENT LOCATION LATITUDE/LONGITUDE</b>	LAY CENTERED OVER NORTH COASTAL TAMILNADU NEAR <b>LAT. 12.4°N AND LONG. 79.6°E</b> , ABOUT 50 KM NORTH- NORTHWEST OF PUDUCHERRY.
<b>CURRENT INTENSITY</b>	SEVERE CYCLONIC STORM WITH WIND SPEED OF 85-95 KMPH GUSTING TO 105 KMPH.
<b>OBSERVATIONS FROM THE COAST</b>	<u>.RAINFALL (MM) DURING 08:30 HOURS IST OF 25<sup>TH</sup> NOV TO 0530 HOURS IST OF 26<sup>TH</sup> NOVEMBER 2020:</u> NAGAPATNAM-63, KARAİKAL-96, CUDDALORE-270, PUDUCHERRY-300 AND CHENNAI-113.
<b>FORECAST MOVEMENT AND INTENSITY</b>	SEVERE CYCLONIC STORM ‘NIVAR’ WOULD MOVE NORTHWEST WARDS AND WEAKEN FURTHER INTO A CYCLONIC STORM DURING NEXT 3 HOURS.



**DWR Chennai Imagery based on 0639 IST of 26<sup>th</sup> November**



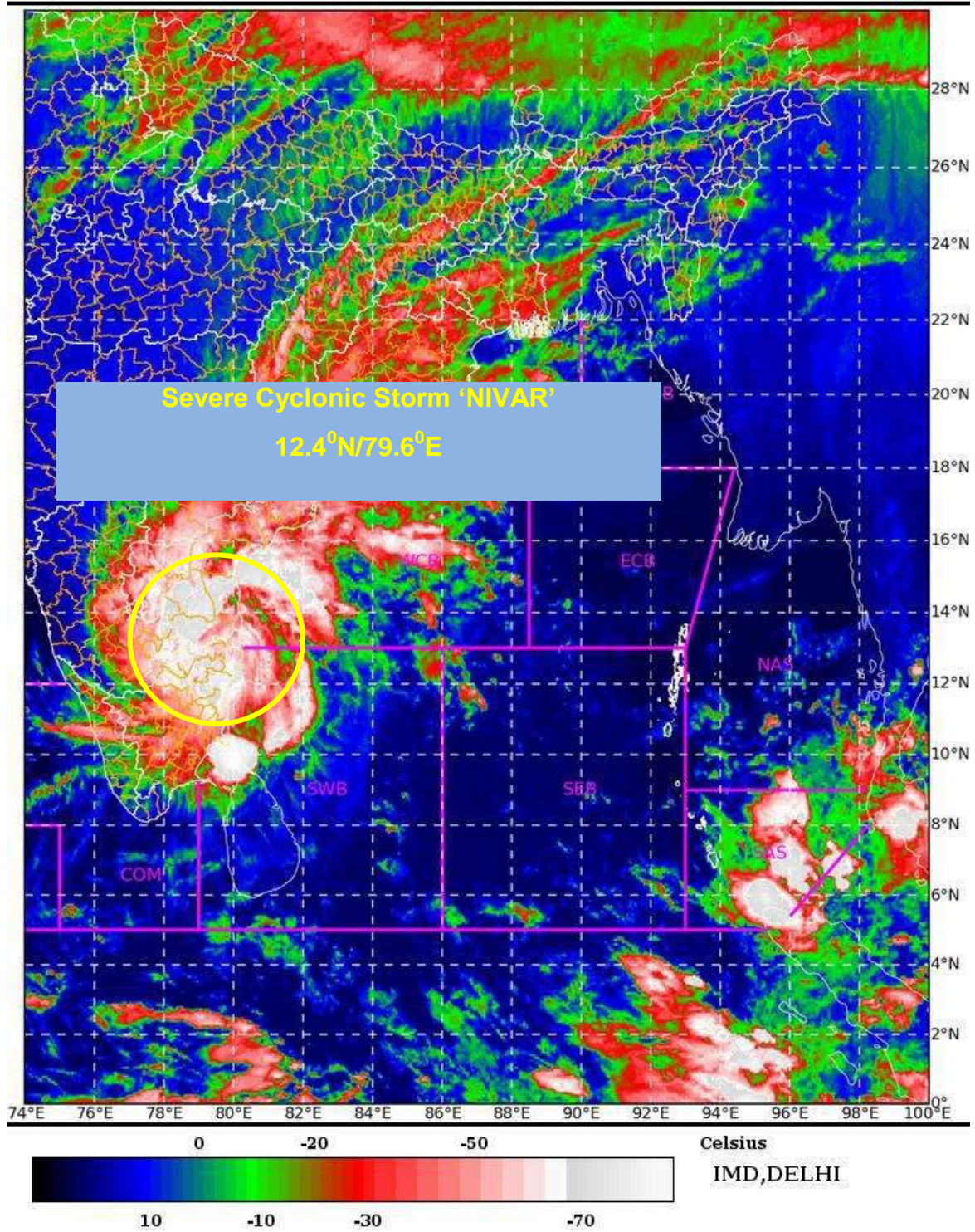
SAT : INSAT-3D IMG

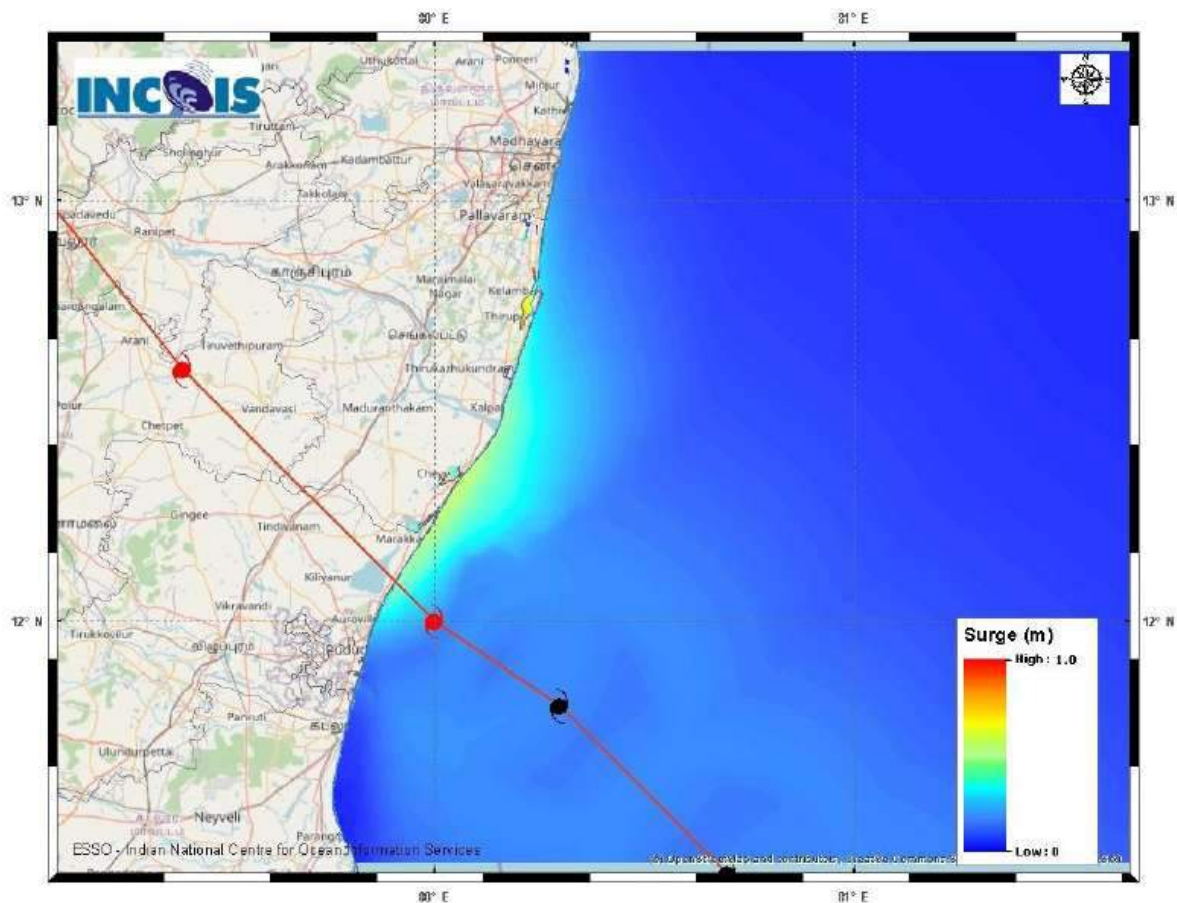
26-11-2020/(0000 to 0026) GMT

IMG\_TIR1\_TEMP 10.8 um

26-11-2020/(0530 to 0556) IST

L1C Mercator





Expected Maximum Storm Surge \*  
Expected Maximum Inundation Extent

1.0 m Near Kancheepuram Tamil Nadu  
0.2 Km Near Kancheepuram Tamil Nadu

#### STORM SURGE HEIGHT INFORMATION:

\* The below listed surge heights are over and above astronomical tide.

MANDAL/TALUK	DISTRICT	STATE / UNION TERRITORY	NEAREST PLACE OF HABITATION	STORM SURGE (m) *	EXPECTED INUNDATION EXTENT (km)
Chengalpattu	Kancheepuram	Tamil Nadu	Thiruporur	0.5-1.0	Upto 0.2
Cheyyur	Kancheepuram	Tamil Nadu	Kadalur	0.4-0.8	Nil
Mannargudi	Thiruvavur	Tamil Nadu	Thiruvavur	0.2-0.5	Upto 0.1
Tindivanam	Viluppuram	Tamil Nadu	Ozhukarai Municipality	0.5-0.6	Upto 0.1
Tirutturaippundi	Nagapattinam	Tamil Nadu	Vaimedu west	0.2-0.5	Upto 0.1





**OBSERVED AND FORECAST TRACK ALONGWITH CONE OF UNCERTAINTY OF SEVERE CYCLONIC STORM' NIVAR' OVER SOUTHWEST BAY OF BENGAL BASED ON 2100 UTC OF 25<sup>TH</sup> NOVEMBER, 2020.**



DATE/TIME IN UTC

IST=UTC + 0530

L: LOW PRESSURE AREA

WML: WELL MARKED LOW PRESSURE AREA

D: DEPRESSION (17-27 KT)

DD: DEEP DEPRESSION (28-33 KT)

CS: CYCLONIC STORM (34-47 KT)

SCS: SEVERE CYCLONIC STORM (48-63KT)

VSCS: VERY SEVERE CYCLONIC STORM (64-89 KT)

ESCS: EXTREMELY SEVERE CYCLONIC STORM (90-119 KT)

SuCS: SUPER CYCLONIC STORM ( $\geq 120$  KT)



LESS THAN 34 KT



34-47 KT



$\geq 48$  KT



OBSERVED TRACK



FORECAST TRACK



CONE OF UNCERTAINTY



# OBSERVED AND FORECAST TRACK ALONGWITH QUADRANT WIND DISTRIBUTION OF SEVERE CYCLONIC STORM 'NIVAR' OVER SOUTHWEST BAY OF BENGAL BASED ON 2100 UTC OF 25<sup>TH</sup> NOVEMBER, 2020



## DATE/TIME IN UTC

IST=UTC + 0530

L: LOW PRESSURE AREA

WML: WELL MARKED LOW PRESSURE AREA

D: DEPRESSION (17-27 KT)

DD: DEEP DEPRESSION (28-33 KT)

CS: CYCLONIC STORM (34-47 KT)

SCS: SEVERE CYCLONIC STORM (48-63KT)

VSCS: VERY SEVERE CYCLONIC STORM (64-89 KT)

ESCS: EXTREMELY SEVERE CYCLONIC STORM (90-119 KT)

SuCS: SUPER CYCLONIC STORM (≥ 120 KT)

● LESS THAN 34 KT

○ 34-47 KT

● ≥ 48 KT

— OBSERVED TRACK

— FORECAST TRACK

▲ CONE OF UNCERTAINTY

AREA OF MAXIMUM SUSTAINED WIND SPEED:

28-33 KT (52-61 KMPH)

34-49 KT (62-91 KMPH)

50-63 KT (92-117 KMPH)

≥ 64 KT (≥118 KMPH)

## IMPACT OVER THE SEA

MSW (knot/kmph)	Impact	Action
28-33 (52-61)	Very rough seas	Total suspension of fishing operations
34-49 (62-91)	High to very high seas	Total suspension of fishing operations
50-63 (92-117)	Very high seas	Total suspension of fishing operations
≥ 64 (≥118)	Phenomenal	Total suspension of fishing operations