



**India Meteorological Department**  
**(Ministry of Earth Sciences)**

**BULLETIN NO. : 25 (BOB/05/2020)**

**TIME OF ISSUE: 2030 HOURS IST**

**DATED: 03.12.2020**

**FROM: INDIA METEOROLOGICAL DEPARTMENT (FAX NO. 24643965/24699216/24623220)**

**TO: CONTROL ROOM, NDM, MINISTRY OF HOME AFFAIRS (FAX.NO. 23093750)**

**CONTROL ROOM NDMA (FAX.NO. 26701729)**

**CABINET SECRETARIAT (FAX.NO.23012284, 23018638)**

**PS TO HON'BLE MINISTER FOR S & T AND EARTH SCIENCES (FAX NO.23316745)**

**SECRETARY, MOES, (FAX NO. 24629777)**

**H.Q. (INTEGRATED DEFENCE STAFF AND CDS) (FAX NO. 23005137/23005147)**

**DIRECTOR GENERAL, DOORDARSHAN (23385843)**

**DIRECTOR GENERAL, AIR (23421105, 23421219)**

**PIB MOES (FAX NO. 23389042)**

**UNI (FAX NO. 23355841)**

**D.G. NATIONAL DISASTER RESPONSE FORCE (NDRF) (FAX NO. 26105912, 2436 3260)**

**DIRECTOR, PUNCTUALITY, INDIAN RAILWAYS (FAX NO. 23388503)**

**CHIEF SECRETARY, KARNATAKA (FAX NO. 080-22256360, 22258913)**

**CHIEF SECRETARY, KERALA (FAX NO. 0471-233315)**

**CHIEF SECRETARY, LAKSHADWEEP ISLANDS (FAX NO. 04896-262184)**

**CHIEF SECRETARY, ANDAMAN & NICOBAR ISLANDS (FAX NO. 03192- 232656)**

**CHIEF SECRETARY, ANDHRA PRADESH (FAX NO. 0863-2441029, 08645-246600)**

**CHIEF SECRETARY, TAMIL NADU (FAX NO. 044-25672304)**

**CHIEF SECRETARY, PUDUCHERRY (FAX NO. 0413-2337575, 2334145)**

**Sub: Cyclonic Storm 'Burevi' over Gulf of Mannar weakened into a Deep Depression**

The **Cyclonic Storm 'Burevi'** over Gulf of Mannar close to Pamban moved westwards with a speed of 9kmph during past six hours, weakened into a Deep Depression and lay centered at 1730 hrs IST of 03<sup>rd</sup> December over Gulf of Mannar near Lat. 9.2°N and Long. 79.1°E close to Ramanathapuram District coast, about 20km southwest of Pamban and 210 km east-northeast of Kanniyakumari. **The associated wind speed is about 55-65 gusting to 75 kmph.**

The deep depression would move west-southwestwards and cross Ramanathapuram and Thoothukudi districts during 3<sup>rd</sup> December night to 4<sup>th</sup> December early hours with wind speed of 50-60 gusting to 70 kmph. It is very likely to weaken further into a Depression (wind speed 40-50kmph gusting to 60 kmph) by tomorrow, the 4<sup>th</sup> December morning.

Forecast track and intensity are given below:

Date/Time(IST)	Position (Lat. °N/ long. °E)	Maximum sustained surface wind speed (Kmph)	Category of cyclonic disturbance
03.12.20/1730	9.2/79.1	55-65 gusting to 75	Deep Depression
03.12.20/2330	9.1/78.5	50-60 gusting to 70	Deep Depression
04.12.20/0530	8.9/78.0	45-55 gusting to 65	Depression
04.12.20/1130	8.8/77.4	40-50 gusting to 60	Depression
04.12.20/1730	8.7/76.8	30-40 gusting to 50	Well Marked Low

**Spatial rainfall distribution: Isolated: ≤25%, A few: 26-50%, Many: 51-75%, Most: 76-100%**

**Rainfall amount (mm): Heavy rain: 64.5 – 115.5, Very heavy rain: 115.6 – 204.4, Extremely heavy rain: 204.5 or more.**

## Warnings:

### (i) Rainfall

- **Rainfall at most places with heavy to very heavy rainfall at isolated places very likely** over Tamilnadu and Kerala during next 24-hours
- Heavy rainfall at isolated places very likely over south Coastal Andhra Pradesh and Lakshadweep on 3<sup>rd</sup> & 04<sup>th</sup> December.

Sub-Divisions	03 Dec 2020*	04 Dec 2020*
Tamilnadu, Puducherry & Karaikal	Rainfall at many places with heavy to very heavy rainfall at isolated places	Rainfall at many places with heavy fall at isolated places
Kerala & Mahe	Rainfall at most places with heavy to very heavy rainfall at isolated places	Rainfall at many places with heavy to very heavy rainfall at isolated places
South Coastal Andhra Pradesh	Rainfall at a few places with heavy rainfall at isolated places	Rainfall at a few places with heavy rainfall at isolated places
Lakshadweep	Rainfall at many places	Rainfall at most places with heavy to very falls at isolated places

### (ii) Wind warning

- Squally wind speed reaching 55-65 kmph gusting to 75 kmph is very likely during next 6 hours along and off south Tamilnadu coast (Ramanathapuram, Thoothukudi, Tirunelveli and Kanniyakumari districts) and it will gradually decrease to 45-55 kmph gusting to 65 kmph by tomorrow morning the 4<sup>th</sup> December.
- Squally wind speed reaching 35-45 kmph gusting to 55 kmph likely to prevail along & off south Kerala coast (Thiruvananthapuram, Kollam, Pathanamthitta and Alappuzah districts) during next 24-hours.
- Squally wind speed reaching 35-45 kmph gusting to 55 kmph very likely over Lakshadweep-Maldives area and adjoining southeast Arabian Sea on 4<sup>th</sup> December.

### (iii) Sea condition

- Sea condition is rough to very rough over Gulf of Mannar and adjoining southwest Bay of Bengal, along & off south Tamilnadu, west Sri Lanka coasts till morning of the 4<sup>th</sup> December and rough to very rough over Comorin Area, adjoining southeast Arabian Sea and along & off Kerala coast on 4<sup>th</sup> December.

### (v) Fishermen warning and Action suggested

- Fishermen are advised not to venture into Gulf of Mannar and adjoining southwest Bay of Bengal and along & off south Tamilnadu coast and north Sri Lanka coasts during next 12- and along and off Kerala coast, Lakshadweep-Maldives area & adjoining southeast Arabian Sea during next 24-hours.

**The next bulletin will be issued at 2330 hrs IST of 3<sup>rd</sup> December, 2020.**

**(R. K. Jenamani)**  
**Scientist-F, RSMC, New Delhi**

*Copy to: ACWC Kolkata/Chennai/CWC Bhubaneswar/CWC Visakhapatnam/CWC Thiruvananthapuram*

Spatial rainfall distribution: Isolated: ≤25%, A few: 26-50%, Many: 51-75%, Most: 76-100%  
Rainfall amount (mm): Heavy rain: 64.5 – 115.5, Very heavy rain: 115.6 – 204.4, Extremely heavy rain: 204.5 or more.



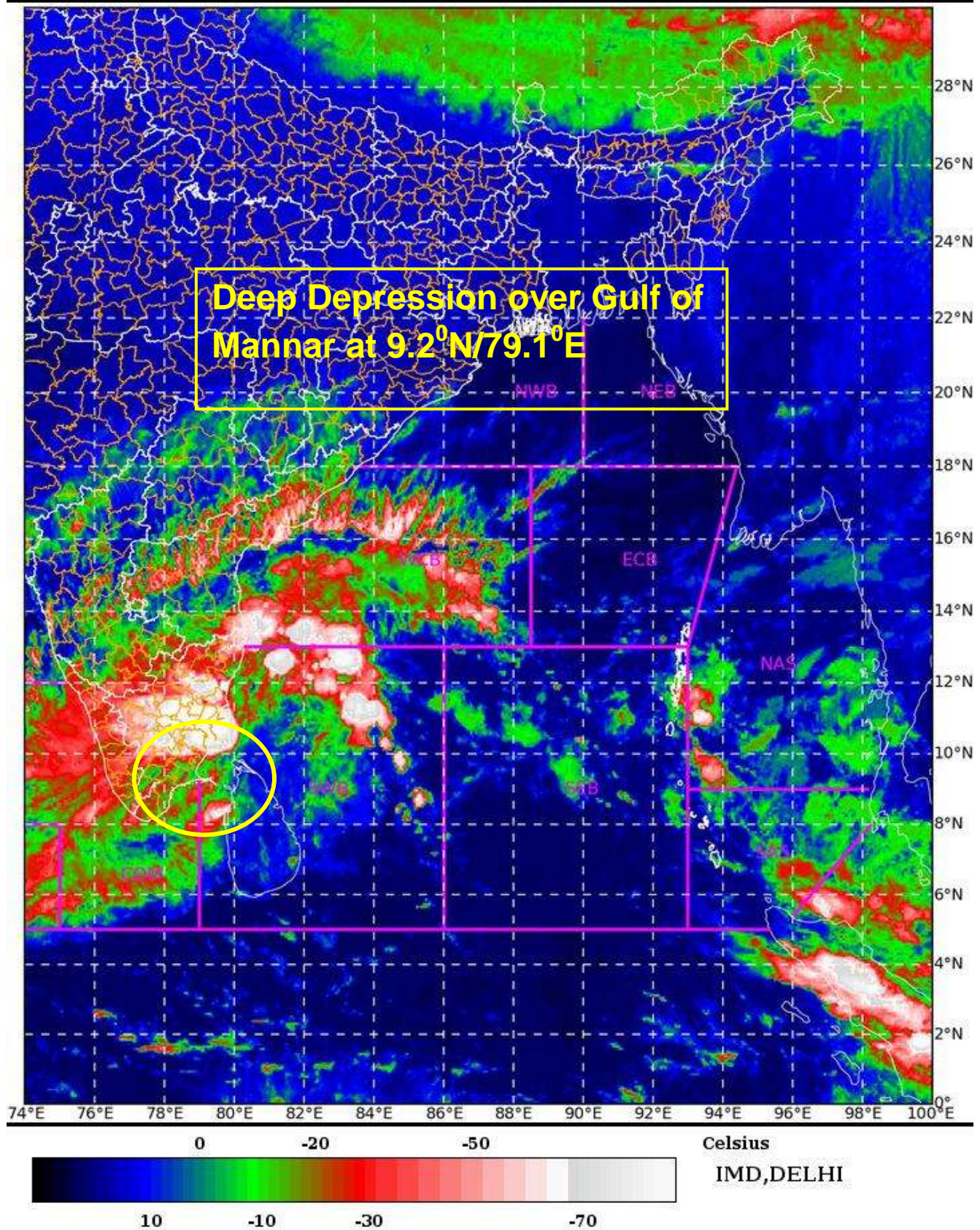
SAT : INSAT-3D IMG

03-12-2020/(1330 to 1356) GMT

IMG\_TIR1\_TEMP 10.8 um

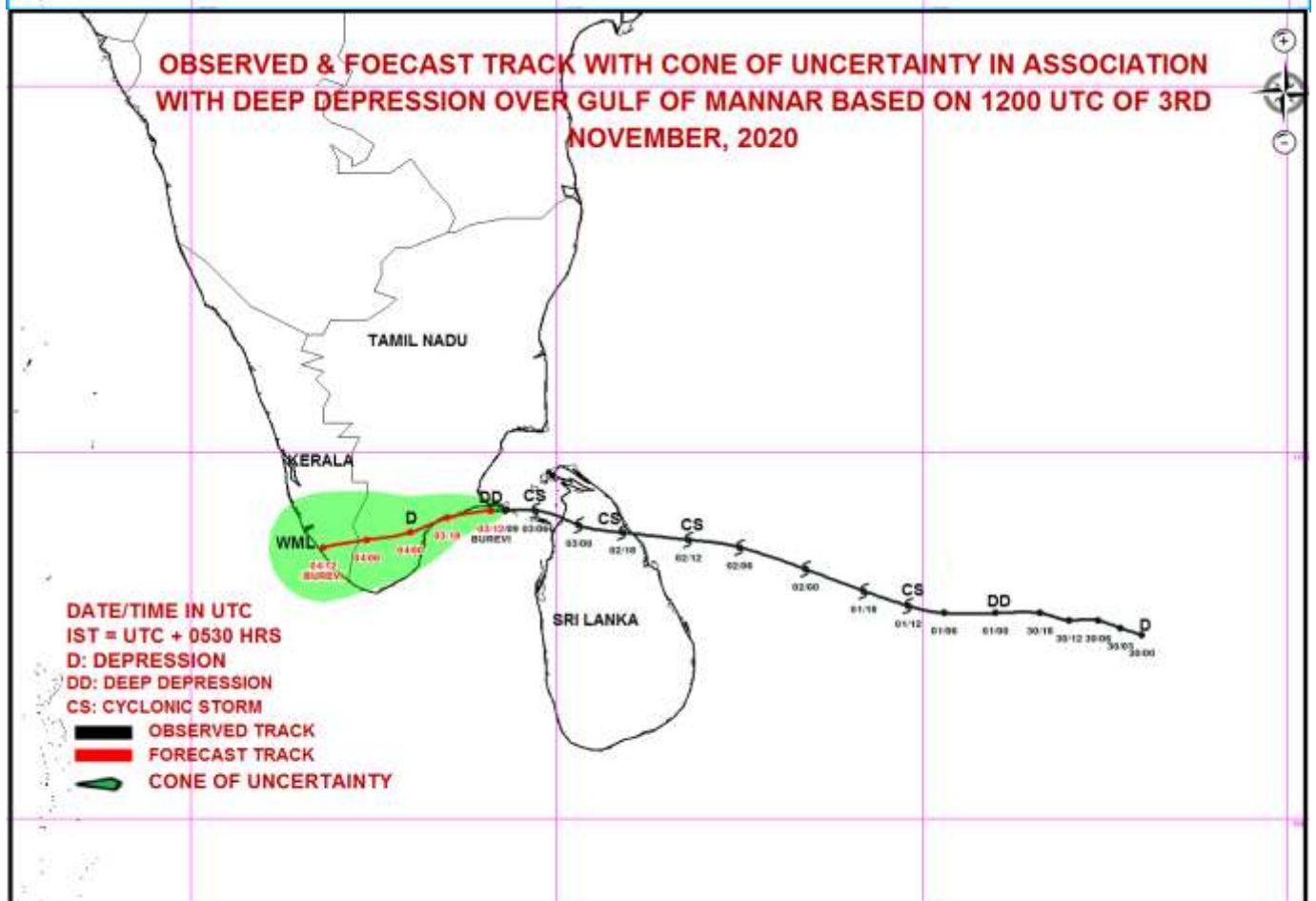
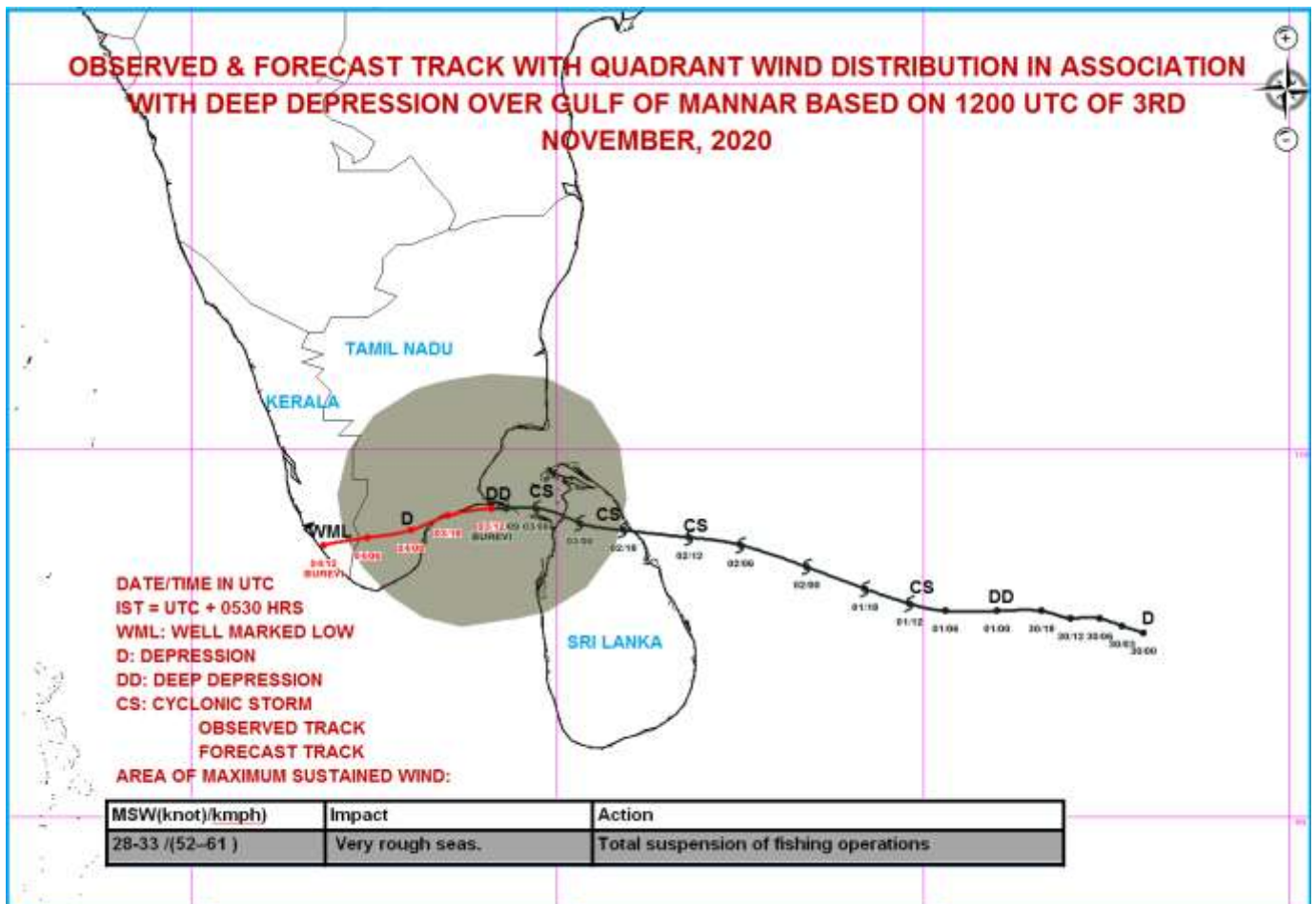
03-12-2020/(1900 to 1926) IST

L1C Mercator



Spatial rainfall distribution: Isolated:  $\leq 25\%$ , A few: 26-50%, Many: 51-75%, Most: 76-100%  
Rainfall amount (mm): Heavy rain: 64.5 – 115.5, Very heavy rain: 115.6 – 204.4, Extremely heavy rain: 204.5 or more.





Spatial rainfall distribution: Isolated:  $\leq 25\%$ , A few: 26-50%, Many: 51-75%, Most: 76-100%  
Rainfall amount (mm): Heavy rain: 64.5 – 115.5, Very heavy rain: 115.6 – 204.4, Extremely heavy rain: 204.5 or more.