



India Meteorological Department
(Ministry of Earth Sciences)

BULLETIN NO. : 26 (BOB/05/2020)

TIME OF ISSUE: 2200 HOURS IST

DATED: 03.12.2020

FROM: INDIA METEOROLOGICAL DEPARTMENT (FAX NO. 24643965/24699216/24623220)

TO: CONTROL ROOM, NDM, MINISTRY OF HOME AFFAIRS (FAX.NO. 23093750)

CONTROL ROOM NDMA (FAX.NO. 26701729)

CABINET SECRETARIAT (FAX.NO.23012284, 23018638)

PS TO HON'BLE MINISTER FOR S & T AND EARTH SCIENCES (FAX NO.23316745)

SECRETARY, MOES, (FAX NO. 24629777)

H.Q. (INTEGRATED DEFENCE STAFF AND CDS) (FAX NO. 23005137/23005147)

DIRECTOR GENERAL, DOORDARSHAN (23385843)

DIRECTOR GENERAL, AIR (23421105, 23421219)

PIB MOES (FAX NO. 23389042)

UNI (FAX NO. 23355841)

D.G. NATIONAL DISASTER RESPONSE FORCE (NDRF) (FAX NO. 26105912, 2436 3260)

DIRECTOR, PUNCTUALITY, INDIAN RAILWAYS (FAX NO. 23388503)

CHIEF SECRETARY, KARNATAKA (FAX NO. 080-22256360, 22258913)

CHIEF SECRETARY, KERALA (FAX NO. 0471-233315)

CHIEF SECRETARY, LAKSHADWEEP ISLANDS (FAX NO. 04896-262184)

CHIEF SECRETARY, ANDAMAN & NICOBAR ISLANDS (FAX NO. 03192- 232656)

CHIEF SECRETARY, ANDHRA PRADESH (FAX NO. 0863-2441029, 08645-246600)

CHIEF SECRETARY, TAMIL NADU (FAX NO. 044-25672304)

CHIEF SECRETARY, PUDUCHERRY (FAX NO. 0413-2337575, 2334145)

Sub: Deep Depression over Gulf of Mannar

The **Deep Depression** over Gulf of Mannar close to Ramanathapuram District coast moved westwards with a speed of 07 kmph during past six hours and lay centered at 2030 hrs IST of 03rd December over Gulf of Mannar near Lat. 9.2°N and Long. 78.9°E close to Ramanathapuram District coast, about 20 km south of Ramanathapuram, 30 km west-southwest of Pamban and 190 km east-northeast of Kanniyakumari. **The associated wind speed is about 55-65 gusting to 75 kmph.**

The Deep Depression would move west-southwestwards and cross Ramanathapuram and Thoothukudi districts by early hours of 4th December with wind speed of 50-60 gusting to 70 kmph. It is very likely to weaken further into a Depression (wind speed 40-50kmph gusting to 60 kmph) by 4th December morning.

Forecast track and intensity are given below:

| Date/Time(IST) | Position (Lat. °N/ long. °E) | Maximum sustained surface wind speed (Kmph) | Category of cyclonic disturbance |
|----------------|---------------------------------|------------------------------------------------|----------------------------------|
| 03.12.20/2030 | 9.2/78.9 | 55-65 gusting to 75 | Deep Depression |
| 03.12.20/2330 | 9.1/78.5 | 50-60 gusting to 70 | Deep Depression |
| 04.12.20/0530 | 8.9/78.0 | 45-55 gusting to 65 | Depression |
| 04.12.20/1130 | 8.8/77.4 | 40-50 gusting to 60 | Depression |
| 04.12.20/1730 | 8.7/76.8 | 30-40 gusting to 50 | Well Marked Low |

Spatial rainfall distribution: Isolated: ≤25%, A few: 26-50%, Many: 51-75%, Most: 76-100%

Rainfall amount (mm): Heavy rain: 64.5 – 115.5, Very heavy rain: 115.6 – 204.4, Extremely heavy rain: 204.5 or more.

Warnings:

(i) Rainfall

- Rainfall at most places with heavy to very heavy rainfall at isolated places very likely over Tamilnadu and Kerala during next 24-hours.
- Heavy rainfall at isolated places very likely over south Coastal Andhra Pradesh and Lakshadweep on 3rd & 04th December.

| Sub-Divisions | 03 Dec 2020* | 04 Dec 2020* |
|----------------------------------|------------------------------------------------------------------------------|------------------------------------------------------------------------------|
| Tamilnadu, Puducherry & Karaikal | Rainfall at many places with heavy to very heavy rainfall at isolated places | Rainfall at many places with heavy fall at isolated places |
| Kerala & Mahe | Rainfall at most places with heavy to very heavy rainfall at isolated places | Rainfall at many places with heavy to very heavy rainfall at isolated places |
| South Coastal Andhra Pradesh | Rainfall at a few places with heavy rainfall at isolated places | Rainfall at a few places with heavy rainfall at isolated places |
| Lakshadweep | Rainfall at many places | Rainfall at most places with heavy to very falls at isolated places |

(ii) Wind warning

- Squally wind speed reaching 55-65 kmph gusting to 75 kmph is very likely during next 6 hours along and off south Tamilnadu coast (Ramanathapuram, Thoothukudi, Tirunelveli and Kanniyakumari districts) and it will gradually decrease to 45-55 kmph gusting to 65 kmph by tomorrow morning the 4th December.
- Squally wind speed reaching 35-45 kmph gusting to 55 kmph likely to prevail along & off south Kerala coast (Thiruvananthapuram, Kollam, Pathanamthitta and Alappuzah districts) during next 24-hours.
- Squally wind speed reaching 35-45 kmph gusting to 55 kmph very likely over Lakshadweep-Maldives area and adjoining southeast Arabian Sea on 4th December.

(iii) Sea condition

- Sea condition is rough to very rough over Gulf of Mannar and adjoining southwest Bay of Bengal, along & off south Tamilnadu, west Sri Lanka coasts till morning of the 4th December and rough to very rough over Comorin Area, adjoining southeast Arabian Sea and along & off Kerala coast on 4th December.

(v) Fishermen warning and Action suggested

- Fishermen are advised not to venture into Gulf of Mannar and adjoining southwest Bay of Bengal and along & off south Tamilnadu coast and north Sri Lanka coasts during next 12- and along and off Kerala coast, Lakshadweep-Maldives area & adjoining southeast Arabian Sea during next 24-hours.

The next bulletin will be issued at 0230 hrs IST of 4th December, 2020.

**(D.R. Pattanaik)
Scientist-F, RSMC, New Delhi**

Copy to: ACWC Kolkata/Chennai/CWC Bhubaneswar/CWC Visakhapatnam/CWC Thiruvananthapuram

Spatial rainfall distribution: Isolated: ≤25%, A few: 26-50%, Many: 51-75%, Most: 76-100%
Rainfall amount (mm): Heavy rain: 64.5 – 115.5, Very heavy rain: 115.6 – 204.4, Extremely heavy rain: 204.5 or more.

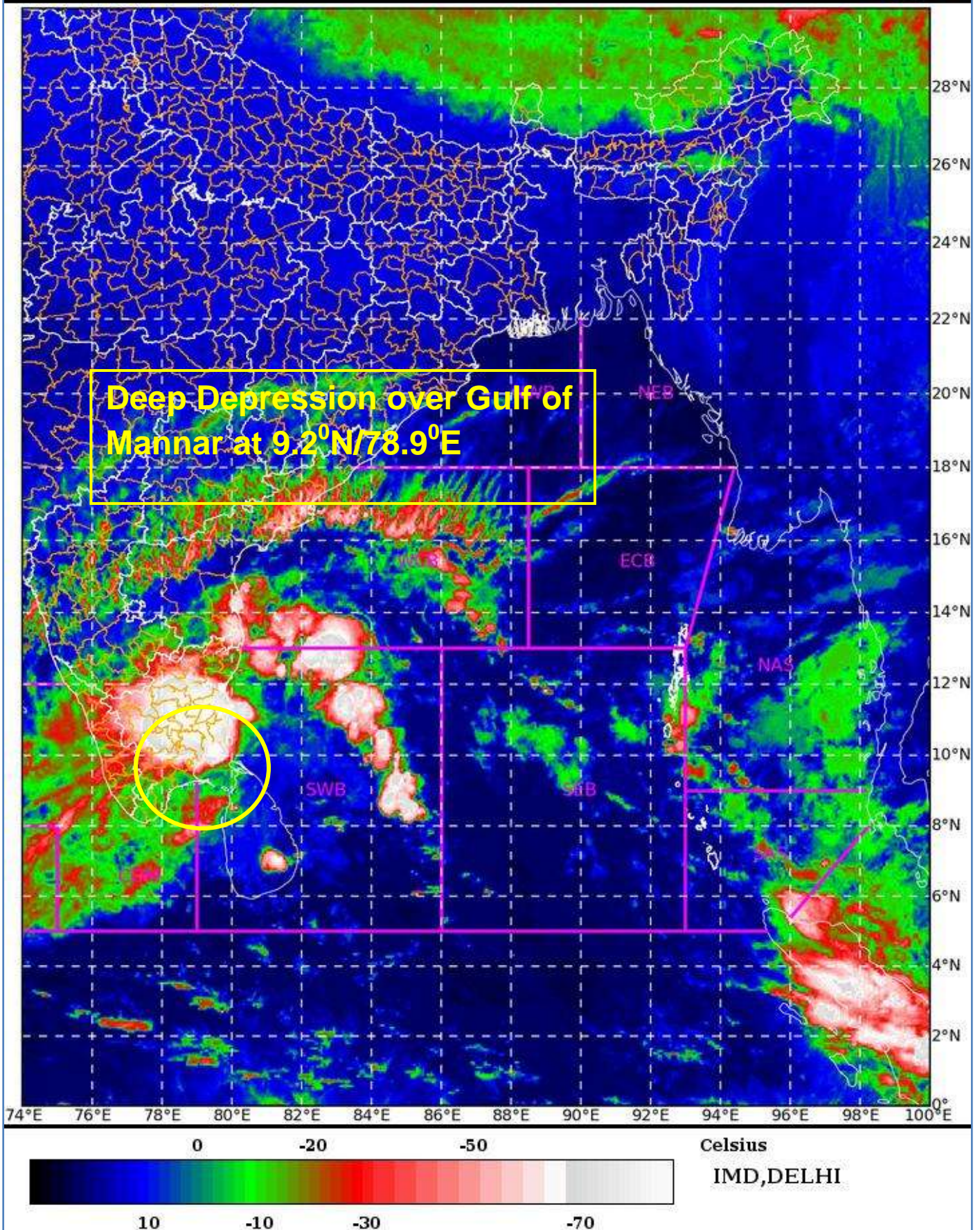
SAT : INSAT-3D IMG

03-12-2020/(1530 to 1556) GMT

IMG_TIR1_TEMP 10.8 um

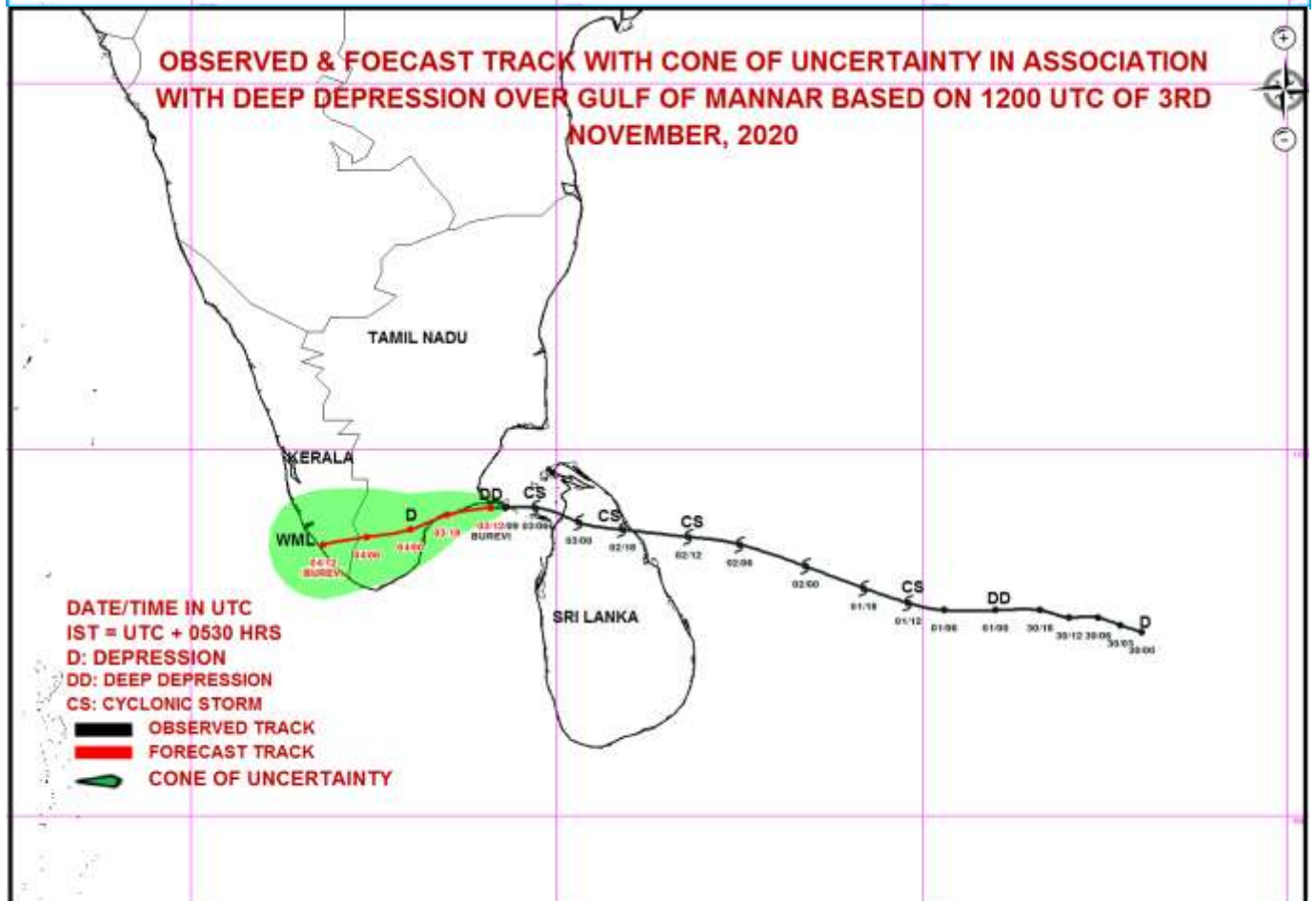
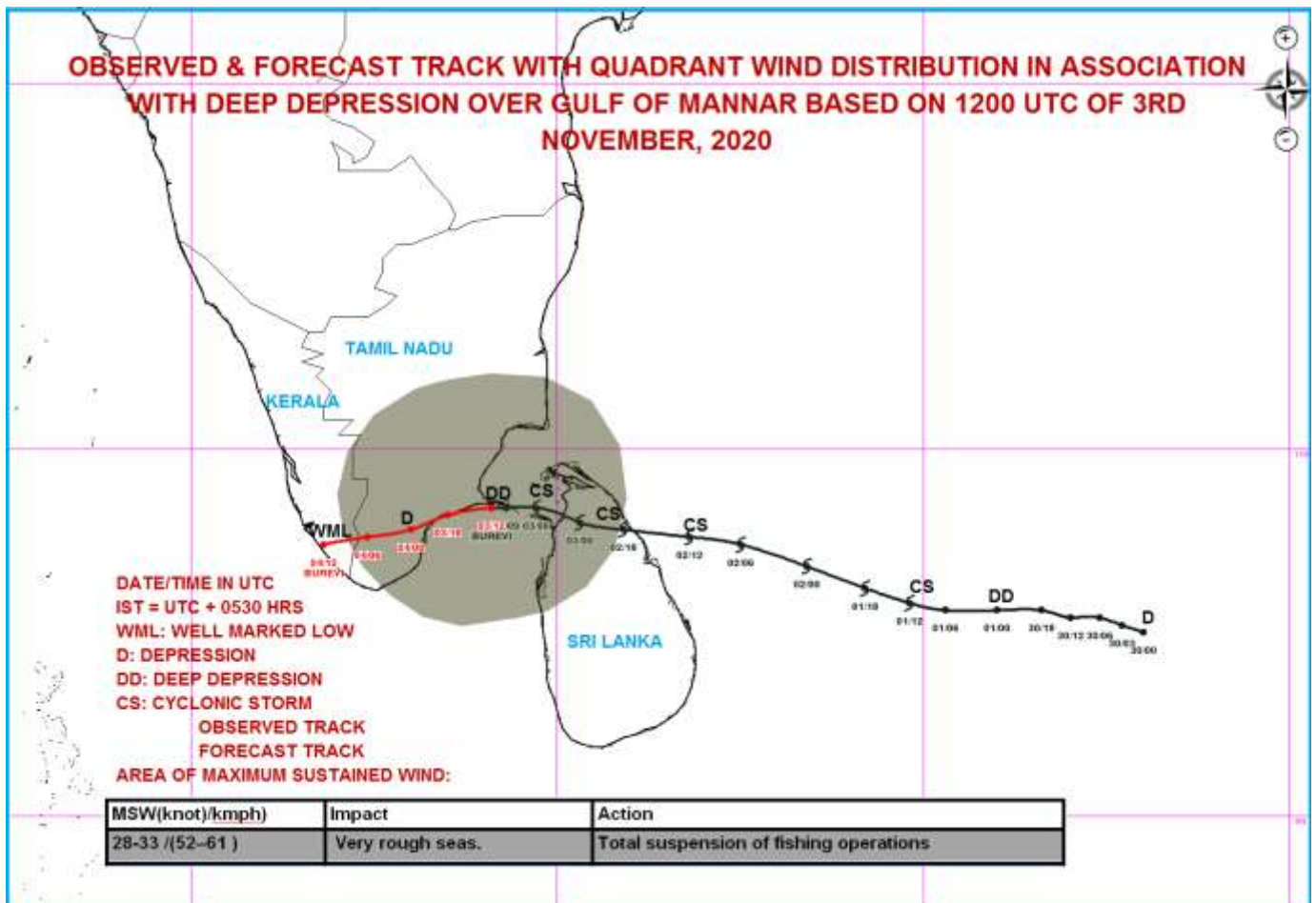
03-12-2020/(2100 to 2126) IST

L1C Mercator



Spatial rainfall distribution: Isolated: ≤25%, A few: 26-50%, Many: 51-75%, Most: 76-100%

Rainfall amount (mm): Heavy rain: 64.5 – 115.5, Very heavy rain: 115.6 – 204.4, Extremely heavy rain: 204.5 or more.



Spatial rainfall distribution: Isolated: $\leq 25\%$, A few: 26-50%, Many: 51-75%, Most: 76-100%
Rainfall amount (mm): Heavy rain: 64.5 – 115.5, Very heavy rain: 115.6 – 204.4, Extremely heavy rain: 204.5 or more.

STORM SURGE HEIGHT INFORMATION:

* The below listed surge heights are over and above astronomical tide.

| MANDAL/TALUK | DISTRICT | STATE / UNION TERRITORY | NEAREST PLACE OF HABITATION | STORM SURGE (m) | EXPECTED INUNDATION EXTENT (km) |
|----------------|----------------|-------------------------|-----------------------------|-----------------|---------------------------------|
| Tiruvadanai | Ramanathapuram | Tamil Nadu | Marungur | 0.5-0.9 | Upto 0.7 |
| Ramanathapuram | Ramanathapuram | Tamil Nadu | Nagachi | 0.6-0.8 | Upto 0.3 |
| Arantangi | Pudukkottai | Tamil Nadu | Enadi | 0.4-0.7 | Upto 0.4 |
| Ottapidaram | Thoothukkudi | Tamil Nadu | Tharuvaikulam | 0.3-0.4 | Nil |
| Pattukkottai | Thanjavur | Tamil Nadu | Palanjur | 0.2-0.4 | Upto 0.18 |
| Peravurani | Thanjavur | Tamil Nadu | Sendalaivayal | 0.3-0.4 | Nil |
| Tuticorin | Thoothukkudi | Tamil Nadu | Mappilaiurani | 0.3-0.4 | Nil |

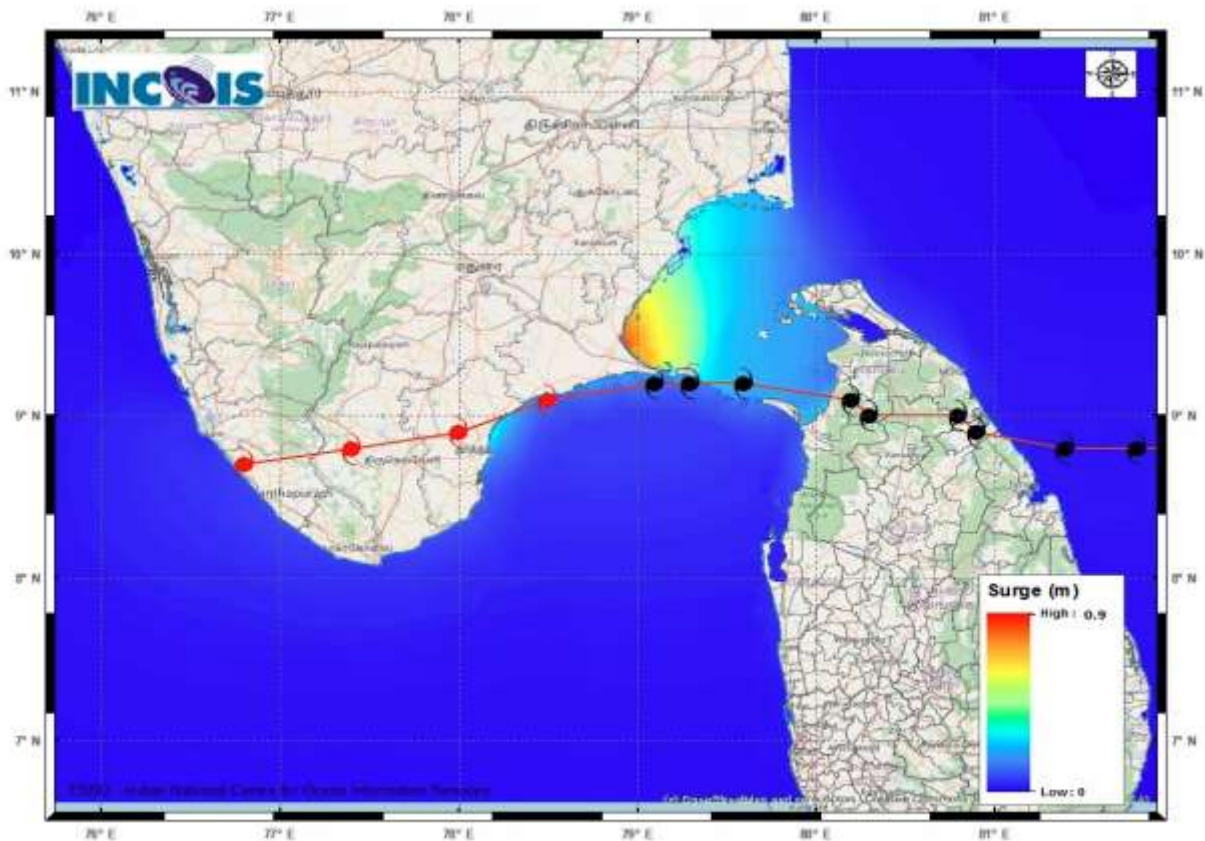


Figure:Storm Surge Map

Spatial rainfall distribution: Isolated: $\leq 25\%$, A few: 26-50%, Many: 51-75%, Most: 76-100%
 Rainfall amount (mm): Heavy rain: 64.5 – 115.5, Very heavy rain: 115.6 – 204.4, Extremely heavy rain: 204.5 or more.