



India Meteorological Department
(Ministry of Earth Sciences)
BULLETIN NO. : 27 (BOB/05/2020)

TIME OF ISSUE: 0200 HOURS IST

DATED: 04.12.2020

FROM: INDIA METEOROLOGICAL DEPARTMENT (FAX NO. 24643965/24699216/24623220)

TO: CONTROL ROOM, NDM, MINISTRY OF HOME AFFAIRS (FAX.NO. 23093750)
CONTROL ROOM NDMA (FAX.NO. 26701729)
CABINET SECRETARIAT (FAX.NO.23012284, 23018638)
PS TO HON'BLE MINISTER FOR S & T AND EARTH SCIENCES (FAX NO.23316745)
SECRETARY, MOES, (FAX NO. 24629777)
H.Q. (INTEGRATED DEFENCE STAFF AND CDS) (FAX NO. 23005137/23005147)
DIRECTOR GENERAL, DOORDARSHAN (23385843)
DIRECTOR GENERAL, AIR (23421105, 23421219)
PIB MOES (FAX NO. 23389042)
UNI (FAX NO. 23355841)
D.G. NATIONAL DISASTER RESPONSE FORCE (NDRF) (FAX NO. 26105912, 2436 3260)
DIRECTOR, PUNCTUALITY, INDIAN RAILWAYS (FAX NO. 23388503)
CHIEF SECRETARY, KARNATAKA (FAX NO. 080-22256360, 22258913)
CHIEF SECRETARY, KERALA (FAX NO. 0471-233315)
CHIEF SECRETARY, LAKSHADWEEP ISLANDS (FAX NO. 04896-262184)
CHIEF SECRETARY, ANDAMAN & NICOBAR ISLANDS (FAX NO. 03192- 232656)
CHIEF SECRETARY, ANDHRA PRADESH (FAX NO. 0863-2441029, 08645-246600)
CHIEF SECRETARY, TAMIL NADU (FAX NO. 044-25672304)
CHIEF SECRETARY, PUDUCHERRY (FAX NO. 0413-2337575, 2334145)

Sub: Deep Depression over Gulf of Mannar

The **Deep Depression** over Gulf of Mannar close to Ramanathapuram District coast moved west-southwestwards with a speed of 09 kmph during past six hours and lay centered at 2330 hrs IST of 03rd December over Gulf of Mannar near Lat. 9.1°N and Long. 78.6°E close to Ramanathapuram District coast, about 40 km southwest of Ramanathapuram, 70 km west-southwest of Pamban and 160 km northeast of Kanniyakumari. **The associated wind speed is about 50-60 gusting to 70 kmph.**

The Deep Depression would move west-southwestwards and cross Ramanathapuram and adjoining Thoothukudi districts within a few hours with wind speed of 50-60 gusting to 70 kmph. It is very likely to weaken further into a Depression (wind speed 40-50kmph gusting to 60 kmph) by 4th December morning.

Forecast track and intensity are given below:

Date/Time(IST)	Position (Lat. °N/ long. °E)	Maximum sustained surface wind speed (Kmph)	Category of cyclonic disturbance
03.12.20/2330	9.1/78.6	50-60 gusting to 70	Deep Depression
04.12.20/0530	8.9/78.0	45-55 gusting to 65	Depression
04.12.20/1130	8.8/77.4	40-50 gusting to 60	Depression
04.12.20/1730	8.7/76.8	30-40 gusting to 50	Well Marked Low

Spatial rainfall distribution: Isolated: ≤25%, A few: 26-50%, Many: 51-75%, Most: 76-100%
Rainfall amount (mm): Heavy rain: 64.5 – 115.5, Very heavy rain: 115.6 – 204.4, Extremely heavy rain: 204.5 or more.

Warnings:

(i) Rainfall

- Heavy to very heavy rainfall at a few places very likely over south Tamilnadu and at isolated places over Kerala & Mahe during next 24 hours. Heavy to very heavy rainfall at isolated places very likely over north Tamilnadu, Puducherry & Karaikal during next 24 hours.
- Heavy rainfall at isolated places very likely over south Coastal Andhra Pradesh and Lakshadweep on 04th December.

Sub-Divisions	04 Dec 2020*
South Tamilnadu	Rainfall at most places with heavy to very heavy falls at a few places
North Tamilnadu, Puducherry & Karaikal	Rainfall at many places with heavy fall at isolated places
Kerala & Mahe	Rainfall at many places with heavy to very heavy rainfall at isolated places
South Coastal Andhra Pradesh	Rainfall at a few places with heavy rainfall at isolated places
Lakshadweep	Rainfall at most places with heavy to very falls at isolated places

(ii) Wind warning

- Squally wind speed reaching 50-60 kmph gusting to 70 kmph is very likely during next 6 hours along and off south Tamilnadu coast (Ramanathapuram, Thoothukudi, Tirunelveli and Kanniyakumari districts) and it will gradually decrease to 45-55 kmph gusting to 65 kmph by morning of 4th December.
- Squally wind speed reaching 35-45 kmph gusting to 55 kmph likely to prevail along & off south Kerala coast (Thiruvananthapuram, Kollam, Pathanamthitta and Alappuzha districts) during next 24-hours.
- Squally wind speed reaching 35-45 kmph gusting to 55 kmph very likely over Lakshadweep-Maldives area and adjoining southeast Arabian Sea on today, the 4th December.

(iii) Sea condition

- Sea condition is rough to very rough over Gulf of Mannar and adjoining southwest Bay of Bengal, along & off south Tamilnadu, west Sri Lanka coasts till morning of today, the 4th December and rough to very rough over Comorin Area, adjoining southeast Arabian Sea and along & off Kerala coast on 4th December.

(v) Fishermen warning and Action suggested

- Fishermen are advised not to venture into Gulf of Mannar and adjoining southwest Bay of Bengal and along & off south Tamilnadu coast and north Sri Lanka coasts during next 12 hours and along and off Kerala coast, Lakshadweep-Maldives area & adjoining southeast Arabian Sea during next 24-hours.

The next bulletin will be issued at 0530 hrs IST of 4th December, 2020.

(D.R. Pattanaik)
Scientist-F, RSMC, New Delhi

Copy to: ACWC Kolkata/Chennai/CWC Bhubaneswar/CWC Visakhapatnam/CWC Thiruvananthapuram

Spatial rainfall distribution: Isolated: ≤25%, A few: 26-50%, Many: 51-75%, Most: 76-100%
Rainfall amount (mm): Heavy rain: 64.5 – 115.5, Very heavy rain: 115.6 – 204.4, Extremely heavy rain: 204.5 or more.

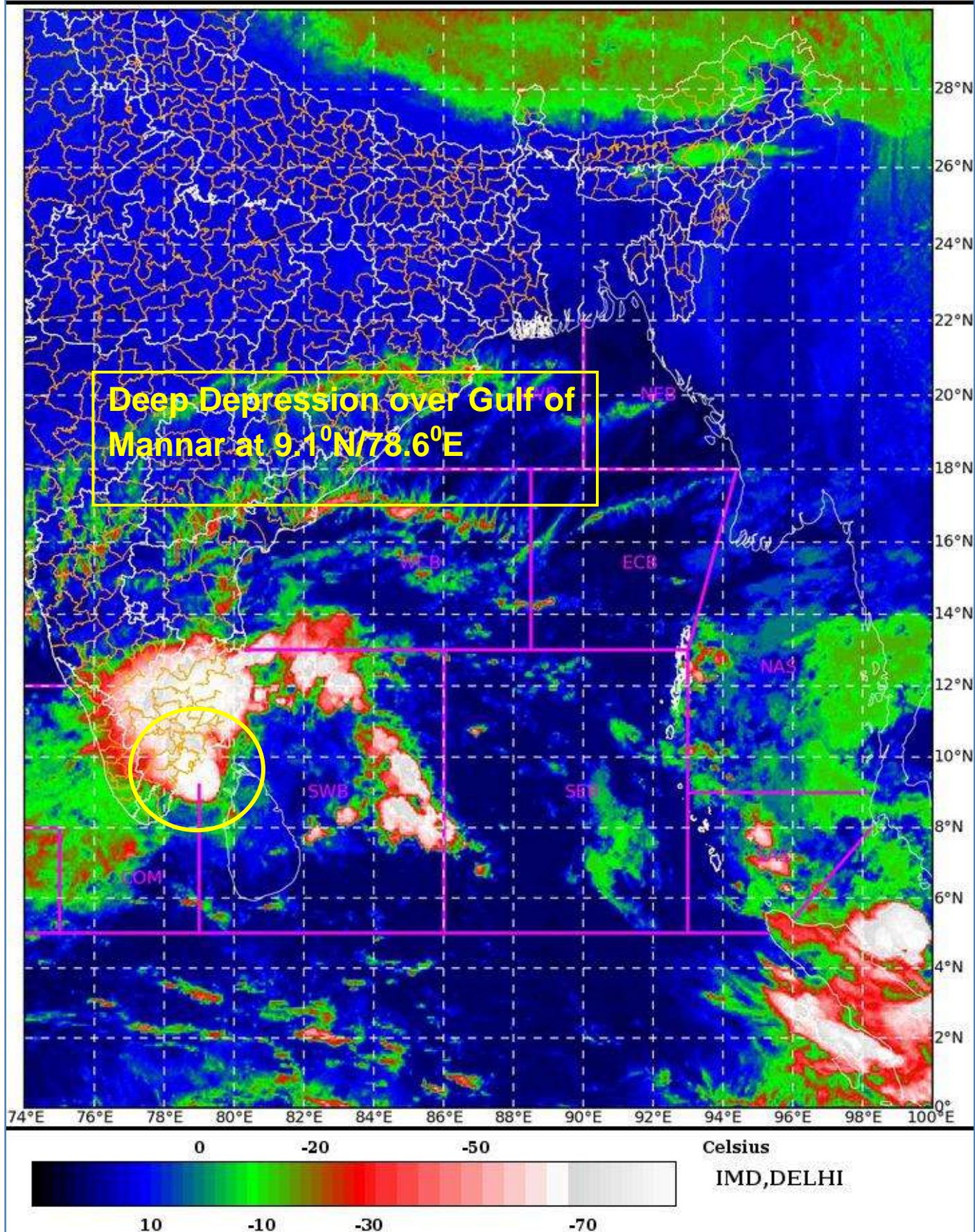
SAT : INSAT-3D IMG

03-12-2020/(1930 to 1956) GMT

IMG_TIR1_TEMP 10.8 um

04-12-2020/(0100 to 0126) IST

L1C Mercator

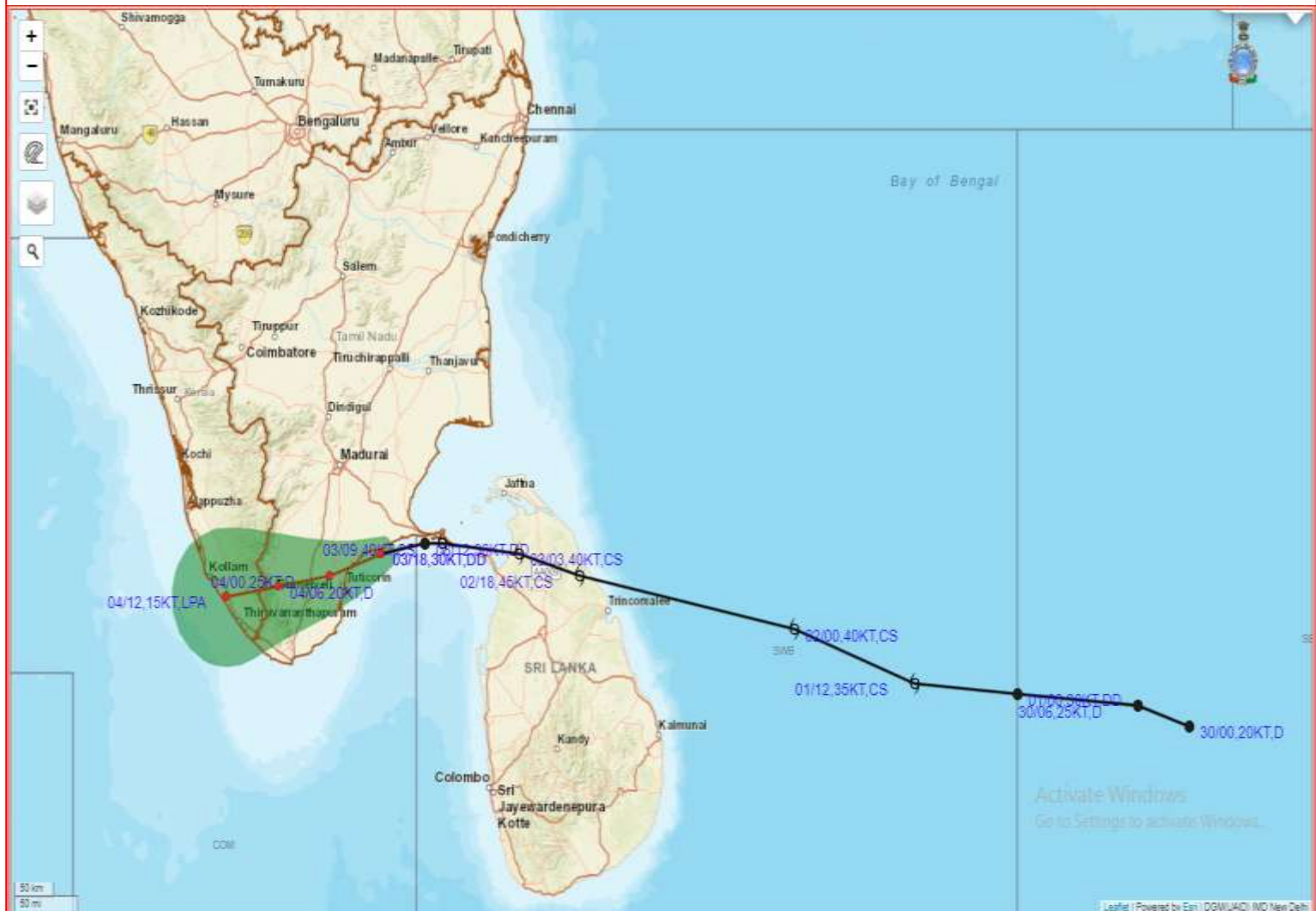


Spatial rainfall distribution: Isolated: ≤25%, A few: 26-50%, Many: 51-75%, Most: 76-100%

Rainfall amount (mm): Heavy rain: 64.5 – 115.5, Very heavy rain: 115.6 – 204.4, Extremely heavy rain: 204.5 or more.



OBSERVED AND FORECAST TRACK ALONGWITH CONE OF UNCERTAINTY OF DEEP DEPRESSION OVER GULF OF MANNAR BASED ON 1800 UTC OF 3rd DECEMBER, 2020.



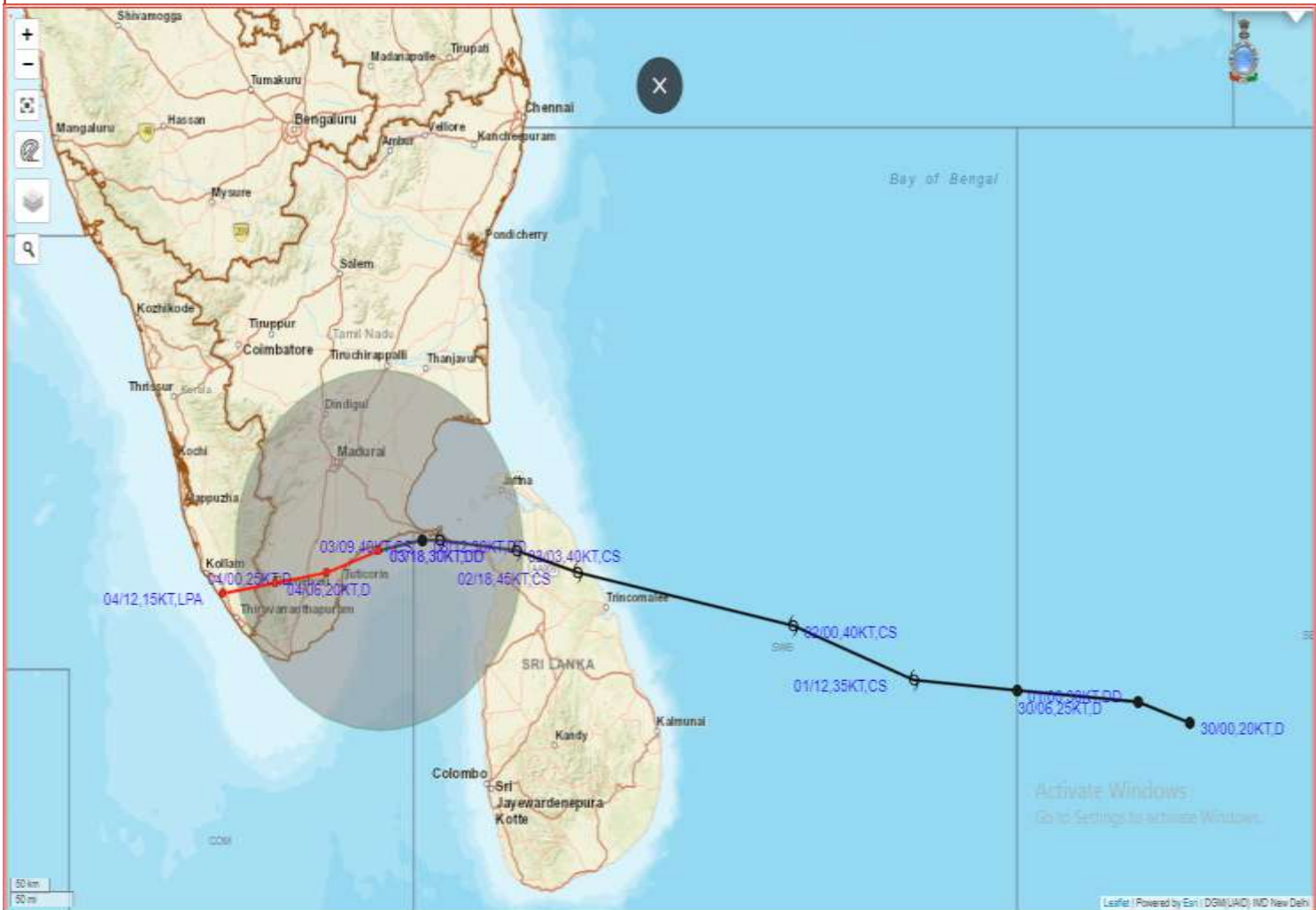
DATE/TIME IN UTC
IST=UTC + 0530
L: LOW PRESSURE AREA
WML: WELL MARKED LOW PRESSURE AREA
D: DEPRESSION (17-27 KT)
DD: DEEP DEPRESSION (28-33 KT)
CS: CYCLONIC STORM (34-47 KT)
SCS: SEVERE CYCLONIC STORM (48-63KT)
VSCS: VERY SEVERE CYCLONIC STORM (64-89 KT)
ESCS: EXTREMELY SEVERE CYCLONIC STORM (90-119 KT)
SuCS: SUPER CYCLONIC STORM (≥ 20 KT)

● LESS THAN 34 KT
● 34-47 KT
● ≥ 48 KT
— OBSERVED TRACK
— FORECAST TRACK
▲ CONE OF UNCERTAINTY

Spatial rainfall distribution: Isolated: $\leq 25\%$, A few: 26-50%, Many: 51-75%, Most: 76-100%
Rainfall amount (mm): Heavy rain: 64.5 – 115.5, Very heavy rain: 115.6 – 204.4, Extremely heavy rain: 204.5 or more.



OBSERVED AND FORECAST TRACK ALONGWITH QUADRANT WIND DISTRIBUTION OF DEEP DEPRESSION OVER GULF OF MANNAR BASED ON 1800 UTC OF 3rd DECEMBER, 2020.



DATE/TIME IN UTC
IST=UTC + 0530
L: LOW PRESSURE AREA
WML: WELL MARKED LOW PRESSURE AREA
D: DEPRESSION (17-27 KT)
DD: DEEP DEPRESSION (28-33 KT)
CS: CYCLONIC STORM (34-47 KT)
SCS: SEVERE CYCLONIC STORM (48-63KT)
VSCS: VERY SEVERE CYCLONIC STORM (64-89 KT)
ESCS: EXTREMELY SEVERE CYCLONIC STORM (90-119 KT)
SuCS: SUPER CYCLONIC STORM (≥ 120 KT)

● LESS THAN 34 KT
 ○ 34-47 KT
 ○ ≥ 48 KT
 — OBSERVED TRACK
 — FORECAST TRACK
 ▲ CONE OF UNCERTAINTY
AREA OF MAXIMUM SUSTAINED WIND SPEED:
 ■ 28-33 KT (52-61 KMPH)
 ■ 34-49 KT (62-91 KMPH)
 ■ 50-63 KT (92-117 KMPH)
 ■ ≥ 64 KT (≥118 KMPH)

IMPACT OVER THE SEA

MSW (knot/kmph)	Impact	Action
28-33 (52-61)	Very rough seas	Total suspension of fishing operations
34-49 (62-91)	High to very high seas	Total suspension of fishing operations
50-63 (92-117)	Very high seas	Total suspension of fishing operations
≥ 64 (≥118)	Phenomenal	Total suspension of fishing operations

Spatial rainfall distribution: Isolated: ≤25%, A few: 26-50%, Many: 51-75%, Most: 76-100%

Rainfall amount (mm): Heavy rain: 64.5 – 115.5, Very heavy rain: 115.6 – 204.4, Extremely heavy rain: 204.5 or more.