



India Meteorological Department
(Ministry of Earth Sciences)
BULLETIN NO. : 28 (BOB/05/2020)

TIME OF ISSUE: 0415 HOURS IST

DATED: 04.12.2020

FROM: INDIA METEOROLOGICAL DEPARTMENT (FAX NO. 24643965/24699216/24623220)

TO: CONTROL ROOM, NDM, MINISTRY OF HOME AFFAIRS (FAX.NO. 23093750)
CONTROL ROOM NDMA (FAX.NO. 26701729)
CABINET SECRETARIAT (FAX.NO.23012284, 23018638)
PS TO HON'BLE MINISTER FOR S & T AND EARTH SCIENCES (FAX NO.23316745)
SECRETARY, MOES, (FAX NO. 24629777)
H.Q. (INTEGRATED DEFENCE STAFF AND CDS) (FAX NO. 23005137/23005147)
DIRECTOR GENERAL, DOORDARSHAN (23385843)
DIRECTOR GENERAL, AIR (23421105, 23421219)
PIB MOES (FAX NO. 23389042)
UNI (FAX NO. 23355841)
D.G. NATIONAL DISASTER RESPONSE FORCE (NDRF) (FAX NO. 26105912, 2436 3260)
DIRECTOR, PUNCTUALITY, INDIAN RAILWAYS (FAX NO. 23388503)
CHIEF SECRETARY, KARNATAKA (FAX NO. 080-22256360, 22258913)
CHIEF SECRETARY, KERALA (FAX NO. 0471-233315)
CHIEF SECRETARY, LAKSHADWEEP ISLANDS (FAX NO. 04896-262184)
CHIEF SECRETARY, ANDAMAN & NICOBAR ISLANDS (FAX NO. 03192- 232656)
CHIEF SECRETARY, ANDHRA PRADESH (FAX NO. 0863-2441029, 08645-246600)
CHIEF SECRETARY, TAMIL NADU (FAX NO. 044-25672304)
CHIEF SECRETARY, PUDUCHERRY (FAX NO. 0413-2337575, 2334145)

Sub: Deep Depression over Gulf of Mannar

The **Deep Depression** over Gulf of Mannar close to Ramanathapuram District coast **remains practically stationary** during past three hours and lay centered at 0230 hrs IST of 04th December over Gulf of Mannar near Lat. 9.1°N and Long. 78.6°E close to Ramanathapuram District coast, about 40 km southwest of Ramanathapuram, 70 km west-southwest of Pamban and 160 km northeast of Kanniyakumari. **The associated wind speed is about 55-65 gusting to 75 kmph.**

The Deep Depression likely to move west-southwestwards and cross Ramanathapuram and adjoining Thoothukudi districts during next 06 hours with wind speed of 50-60 gusting to 70 kmph. It is very likely to weaken further into a Depression (wind speed 45-55 kmph gusting to 65 kmph) during next 24 hours.

Forecast track and intensity are given below:

| Date/Time(IST) | Position (Lat. °N/ long. °E) | Maximum sustained surface wind speed (Kmph) | Category of cyclonic disturbance |
|----------------|---------------------------------|--|----------------------------------|
| 04.12.20/0230 | 9.1/78.6 | 55-65 gusting to 75 | Deep Depression |
| 04.12.20/0530 | 8.9/78.0 | 55-65 gusting to 75 | Deep Depression |
| 04.12.20/1130 | 8.8/77.4 | 50-60 gusting to 70 | Deep Depression |
| 04.12.20/1730 | 8.7/76.8 | 45-55 gusting to 65 | Depression |

Spatial rainfall distribution: Isolated: ≤25%, A few: 26-50%, Many: 51-75%, Most: 76-100%
Rainfall amount (mm): Heavy rain: 64.5 – 115.5, Very heavy rain: 115.6 – 204.4, Extremely heavy rain: 204.5 or more.

Warnings:

(i) Rainfall

- Heavy to very heavy rainfall at a few places very likely over south Tamilnadu and at isolated places over Kerala & Mahe during next 24 hours. Heavy to very heavy rainfall at isolated places very likely over north Tamilnadu, Puducherry & Karaikal during next 24 hours.
- Heavy rainfall at isolated places very likely over south Coastal Andhra Pradesh and Lakshadweep on 04th December.

| Sub-Divisions | 04 Dec 2020* |
|--|--|
| South Tamilnadu | Rainfall at most places with heavy to very heavy falls at a few places |
| North Tamilnadu, Puducherry & Karaikal | Rainfall at many places with heavy fall at isolated places |
| Kerala & Mahe | Rainfall at many places with heavy to very heavy rainfall at isolated places |
| South Coastal Andhra Pradesh | Rainfall at a few places with heavy rainfall at isolated places |
| Lakshadweep | Rainfall at most places with heavy to very falls at isolated places |

(ii) Wind warning

- Squally wind speed reaching 55-65 kmph gusting to 75 kmph is very likely during next 06 hours along and off south Tamilnadu coast (Ramanathapuram, Thoothukudi, Tirunelveli and Kanniyakumari districts) and it will gradually decrease to 45-55 kmph gusting to 65 kmph by evening of 4th December.
- Squally wind speed reaching 35-45 kmph gusting to 55 kmph likely to prevail along & off south Kerala coast (Thiruvananthapuram, Kollam, Pathanamthitta and Alappuzha districts) during next 24 hours.
- Squally wind speed reaching 35-45 kmph gusting to 55 kmph very likely over Lakshadweep-Maldives area and adjoining southeast Arabian Sea during next 24 hours.

(iii) Sea condition

- Sea condition is rough to very rough over Gulf of Mannar and adjoining southwest Bay of Bengal, along & off south Tamilnadu, west Sri Lanka coasts during next 12 hours and rough to very rough over Comorin Area, adjoining southeast Arabian Sea and along & off Kerala coast by evening of 4th December.

(v) Fishermen warning and Action suggested

- Fishermen are advised not to venture into Gulf of Mannar and adjoining southwest Bay of Bengal and along & off south Tamilnadu coast and north Sri Lanka coasts during next 12 hours and along and off Kerala coast, Lakshadweep-Maldives area & adjoining southeast Arabian Sea during next 24-hours.

The next bulletin will be issued at 0830 hrs IST of 4th December, 2020.

**(D.R. Pattanaik)
Scientist-F, RSMC, New Delhi**

Copy to: ACWC Kolkata/Chennai/CWC Bhubaneswar/CWC Visakhapatnam/CWC Thiruvananthapuram

Spatial rainfall distribution: Isolated: ≤25%, A few: 26-50%, Many: 51-75%, Most: 76-100%
Rainfall amount (mm): Heavy rain: 64.5 – 115.5, Very heavy rain: 115.6 – 204.4, Extremely heavy rain: 204.5 or more.

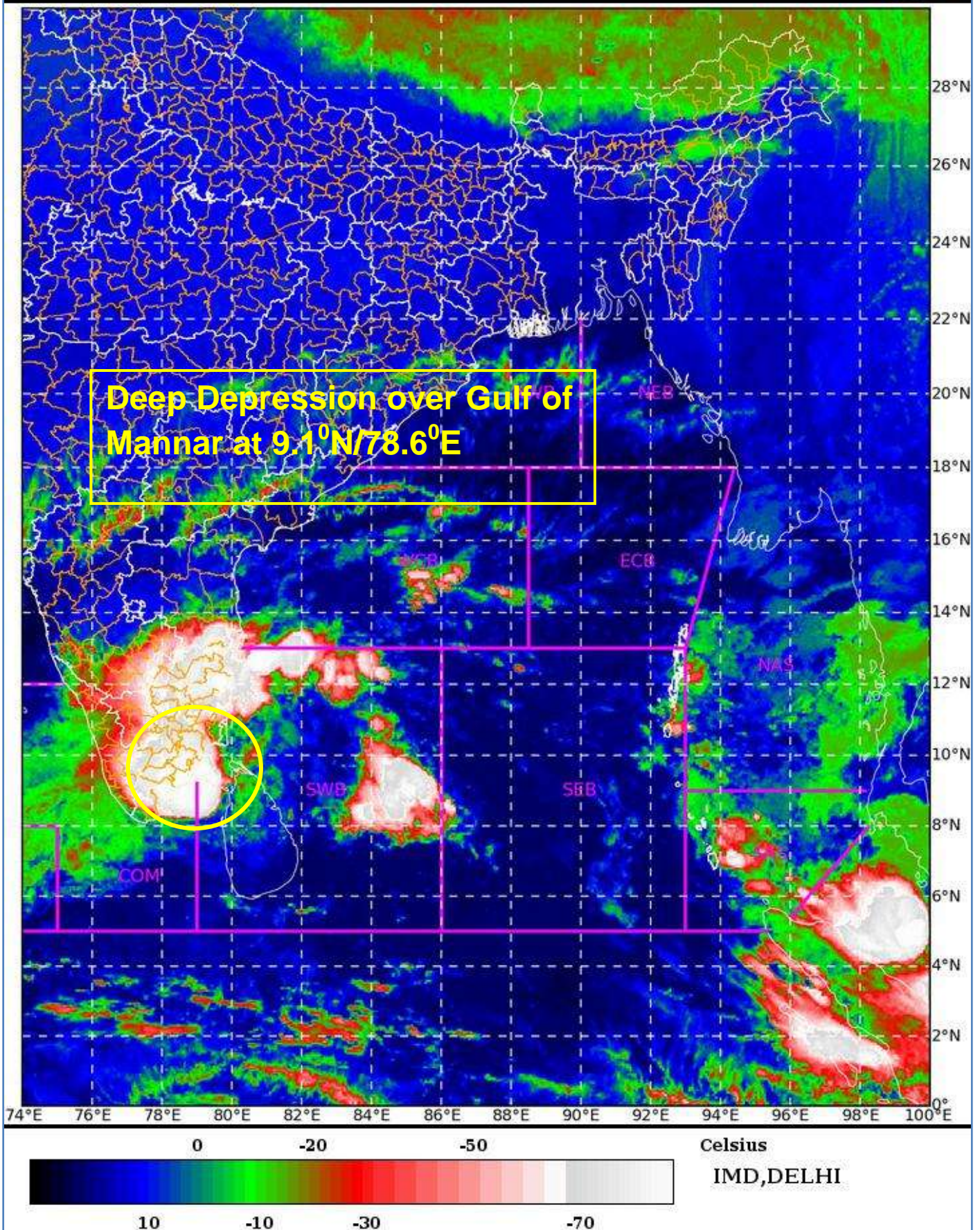
SAT : INSAT-3D IMG

03-12-2020/(2200 to 2226) GMT

IMG_TIR1_TEMP 10.8 um

04-12-2020/(0330 to 0356) IST

L1C Mercator

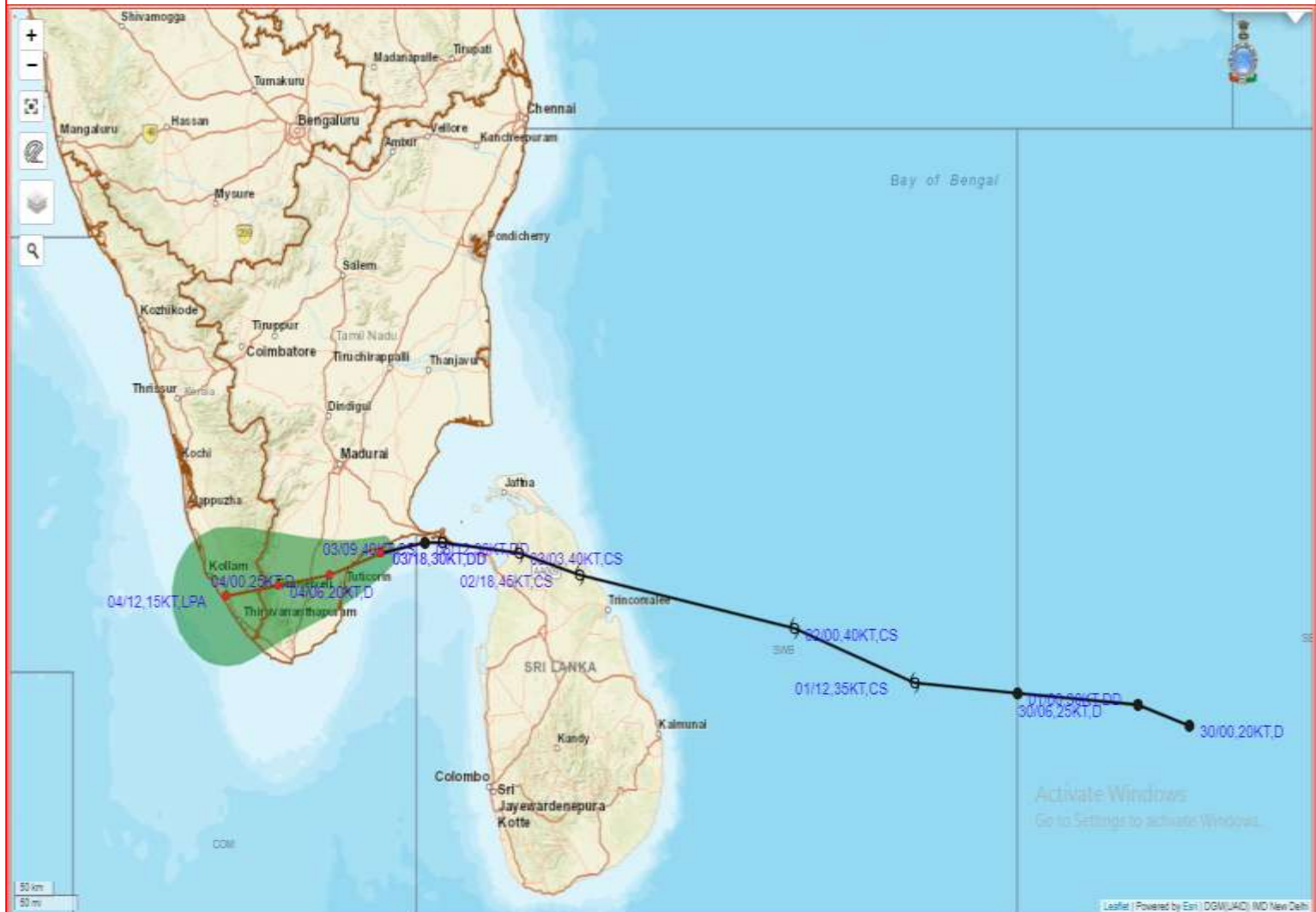


Spatial rainfall distribution: Isolated: ≤25%, A few: 26-50%, Many: 51-75%, Most: 76-100%

Rainfall amount (mm): Heavy rain: 64.5 – 115.5, Very heavy rain: 115.6 – 204.4, Extremely heavy rain: 204.5 or more.



OBSERVED AND FORECAST TRACK ALONGWITH CONE OF UNCERTAINTY OF DEEP DEPRESSION OVER GULF OF MANNAR BASED ON 1800 UTC OF 3rd DECEMBER, 2020.



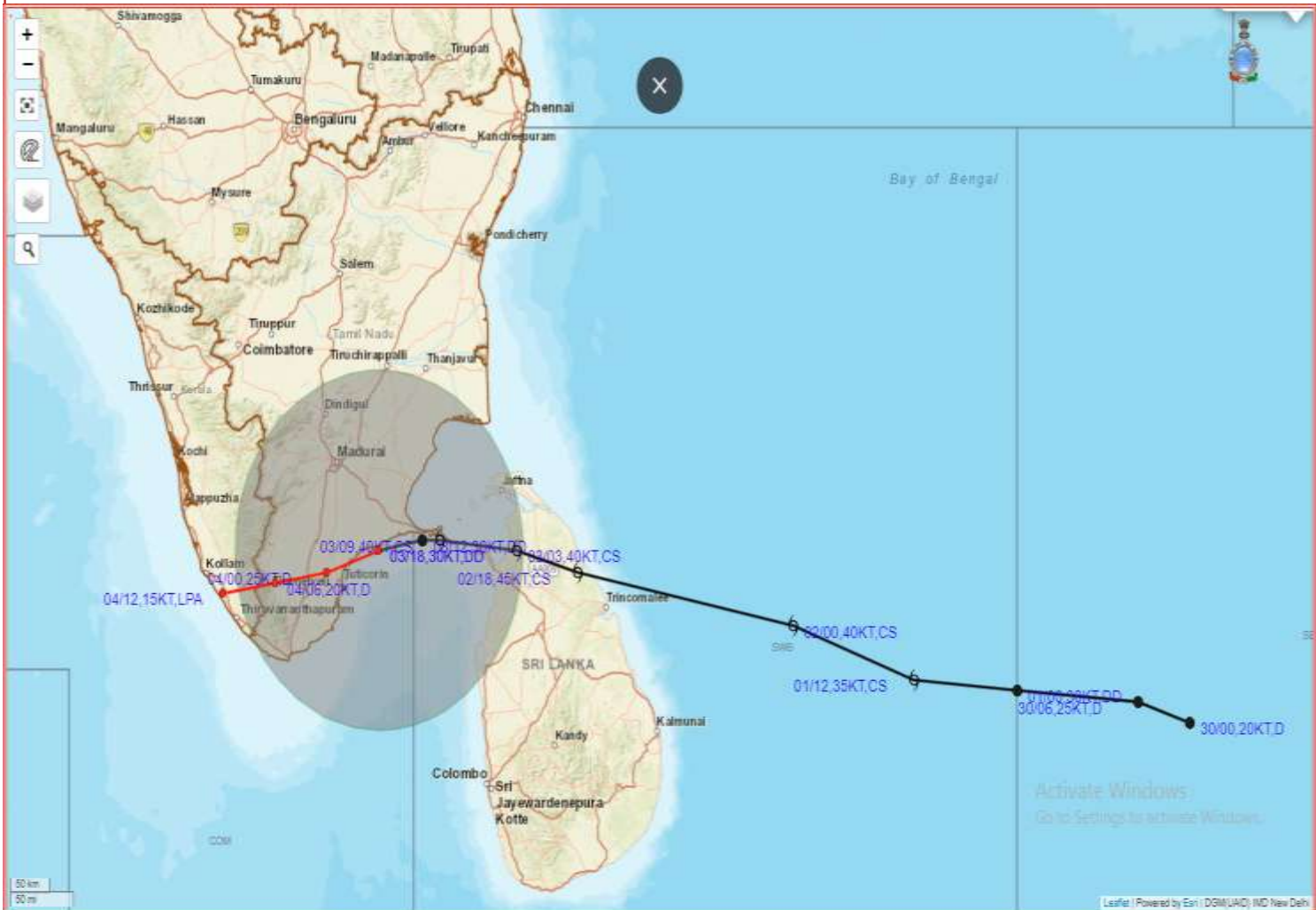
DATE/TIME IN UTC
IST=UTC + 0530
L: LOW PRESSURE AREA
WML: WELL MARKED LOW PRESSURE AREA
D: DEPRESSION (17-27 KT)
DD: DEEP DEPRESSION (28-33 KT)
CS: CYCLONIC STORM (34-47 KT)
SCS: SEVERE CYCLONIC STORM (48-63KT)
VSCS: VERY SEVERE CYCLONIC STORM (64-89 KT)
ESCS: EXTREMELY SEVERE CYCLONIC STORM (90-119 KT)
SuCS: SUPER CYCLONIC STORM (≥ 120 KT)

- LESS THAN 34 KT
- 34-47 KT
- ≥ 48 KT
- OBSERVED TRACK
- FORECAST TRACK
- CONE OF UNCERTAINTY

Spatial rainfall distribution: Isolated: $\leq 25\%$, A few: 26-50%, Many: 51-75%, Most: 76-100%
Rainfall amount (mm): Heavy rain: 64.5 – 115.5, Very heavy rain: 115.6 – 204.4, Extremely heavy rain: 204.5 or more.



OBSERVED AND FORECAST TRACK ALONGWITH QUADRANT WIND DISTRIBUTION OF DEEP DEPRESSION OVER GULF OF MANNAR BASED ON 1800 UTC OF 3rd DECEMBER, 2020.



DATE/TIME IN UTC
 IST=UTC + 0530
 L: LOW PRESSURE AREA
 WML: WELL MARKED LOW PRESSURE AREA
 D: DEPRESSION (17-27 KT)
 DD: DEEP DEPRESSION (28-33 KT)
 CS: CYCLONIC STORM (34-47 KT)
 SCS: SEVERE CYCLONIC STORM (48-63KT)
 VSCS: VERY SEVERE CYCLONIC STORM (64-89 KT)
 ESCS: EXTREMELY SEVERE CYCLONIC STORM (90-119 KT)
 SuCS: SUPER CYCLONIC STORM (≥ 120 KT)

● LESS THAN 34 KT
 6 34-47 KT
 6 ≥ 48 KT
 — OBSERVED TRACK
 — FORECAST TRACK
 ▲ CONE OF UNCERTAINTY
 AREA OF MAXIMUM SUSTAINED WIND SPEED:
 28-33 KT (52-61 KMPH)
 34-49 KT (62-91 KMPH)
 50-63 KT (92-117 KMPH)
 ≥ 64 KT (≥118 KMPH)

IMPACT OVER THE SEA

| MSW (knot/kmph) | Impact | Action |
|-----------------|------------------------|--|
| 28-33 (52-61) | Very rough seas | Total suspension of fishing operations |
| 34-49 (62-91) | High to very high seas | Total suspension of fishing operations |
| 50-63 (92-117) | Very high seas | Total suspension of fishing operations |
| ≥ 64 (≥118) | Phenomenal | Total suspension of fishing operations |

Spatial rainfall distribution: Isolated: ≤25%, A few: 26-50%, Many: 51-75%, Most: 76-100%

Rainfall amount (mm): Heavy rain: 64.5 – 115.5, Very heavy rain: 115.6 – 204.4, Extremely heavy rain: 204.5 or more.