



India Meteorological Department
(Ministry of Earth Sciences)
BULLETIN NO. : 31 (BOB/05/2020)

TIME OF ISSUE: 1330 HOURS IST

DATED: 04.12.2020

FROM: INDIA METEOROLOGICAL DEPARTMENT (FAX NO. 24643965/24699216/24623220)

TO: CONTROL ROOM, NDM, MINISTRY OF HOME AFFAIRS (FAX.NO. 23093750)
CONTROL ROOM NDMA (FAX.NO. 26701729)
CABINET SECRETARIAT (FAX.NO.23012284, 23018638)
PS TO HON'BLE MINISTER FOR S & T AND EARTH SCIENCES (FAX NO.23316745)
SECRETARY, MOES, (FAX NO. 24629777)
H.Q. (INTEGRATED DEFENCE STAFF AND CDS) (FAX NO. 23005137/23005147)
DIRECTOR GENERAL, DOORDARSHAN (23385843)
DIRECTOR GENERAL, AIR (23421105, 23421219)
PIB MOES (FAX NO. 23389042)
UNI (FAX NO. 23355841)
D.G. NATIONAL DISASTER RESPONSE FORCE (NDRF) (FAX NO. 26105912, 2436 3260)
DIRECTOR, PUNCTUALITY, INDIAN RAILWAYS (FAX NO. 23388503)
CHIEF SECRETARY, KARNATAKA (FAX NO. 080-22256360, 22258913)
CHIEF SECRETARY, KERALA (FAX NO. 0471-233315)
CHIEF SECRETARY, LAKSHADWEEP ISLANDS (FAX NO. 04896-262184)
CHIEF SECRETARY, ANDAMAN & NICOBAR ISLANDS (FAX NO. 03192- 232656)
CHIEF SECRETARY, ANDHRA PRADESH (FAX NO. 0863-2441029, 08645-246600)
CHIEF SECRETARY, TAMIL NADU (FAX NO. 044-25672304)
CHIEF SECRETARY, PUDUCHERRY (FAX NO. 0413-2337575, 2334145)

Sub: Deep Depression over Gulf of Mannar

The Deep Depression over Gulf of Mannar close to Ramanathapuram District coast remained practically stationary during past 12 hours and lay centered at 1130 hrs IST of today, the 04th December over Gulf of Mannar near Lat. 9.1°N and Long. 78.6°E close to Ramanathapuram District coast, about 40 km southwest of Ramanathapuram, 70 km west-southwest of Pamban and 160 km northeast of Kanniyakumari. The associated wind speed is about 50-60 gusting to 70 kmph.

The Deep Depression is likely to remain practically stationary over the same region and weaken into a Depression during next 12 hours. Thereafter it will move slowly west-southwestwards across Ramanathapuram district towards south Kerala and weaken into a Well marked Low Pressure Area during subsequent 24 hours.

Warnings:

(i) Rainfall

- Heavy to very heavy rainfall at isolated places with extremely heavy falls at isolated places very likely today, the 4th December and heavy to very heavy rainfall at isolated places on 05th December over Tamilnadu and Puducherry.
- Heavy to very heavy rainfall at isolated places very likely over Kerala & Mahe on 04th & 05th December.

Spatial rainfall distribution: Isolated: ≤25%, A few: 26-50%, Many: 51-75%, Most: 76-100%

Rainfall amount (mm): Heavy rain: 64.5 – 115.5, Very heavy rain: 115.6 – 204.4, Extremely heavy rain: 204.5 or more.

- Heavy rainfall at isolated places very likely over south coastal Andhra Pradesh on 04th & 05th December and over Lakshadweep on 05th December.

Sub-Divisions	04 Dec 2020*	05 Dec 2020*
Tamilnadu, Puducherry & Karaikal	Rainfall at most places with Heavy to very heavy rainfall with extremely heavy falls at isolated places	Rainfall at most places with heavy to very heavy falls at isolated places
Kerala & Mahe	Rainfall at most places with heavy to very heavy falls at isolated places	Rainfall at most places with heavy to very heavy falls at isolated places
South Coastal Andhra Pradesh	Rainfall at a few places with heavy rainfall at isolated places	Rainfall at a few places with heavy rainfall at isolated places
Lakshadweep	Rainfall at a few places	Rainfall at most places with heavy falls at isolated places

(ii) Wind warning

- Squally wind speed reaching 50-60 kmph gusting to 70 kmph is very likely during next 12 hours along and off south Tamilnadu coast (Ramanathapuram, Thoothukudi, Tirunelveli and Kanniyakumari districts) and it will gradually decrease to 40-50 kmph gusting to 60 kmph by night of 4th December.
- Squally wind speed reaching 35-45 kmph gusting to 55 kmph very likely to prevail along & off south Kerala coast from tonight for subsequent 12 hours.
- Squally wind speed reaching 35-45 kmph gusting to 55 kmph very likely over Lakshadweep-Maldives area and adjoining southeast Arabian Sea from early morning of 05th December.

(iii) Sea condition

- Sea condition is rough to very rough over Gulf of Mannar and adjoining southwest Bay of Bengal, along & off south Tamilnadu, west Sri Lanka coasts during next 24 hours and rough to very rough over Comorin Area, adjoining southeast Arabian Sea, Lakshadweep-Maldives areas and along & off Kerala coast by night of 4th December for subsequent 48 hours.

(iv) Fishermen warning and Action suggested

- Fishermen are advised not to venture into Gulf of Mannar & adjoining southwest Bay of Bengal and along & off south Tamilnadu, north Sri Lanka & south Kerala coasts and Lakshadweep-Maldives area & adjoining southeast Arabian Sea during next 24 hours.

The next bulletin will be issued at 2030 hrs IST of 4th December, 2020.

(R. K. Jenamani)
Scientist-F, RSMC, New Delhi

Copy to: ACWC Kolkata/Chennai/CWC Bhubaneswar/CWC Visakhapatnam/CWC Thiruvananthapuram

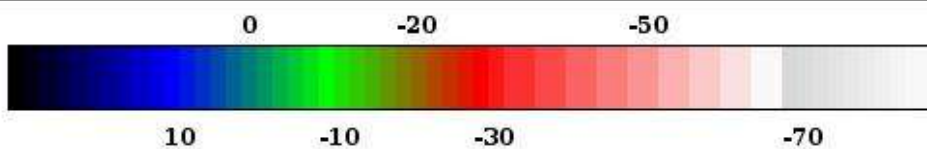
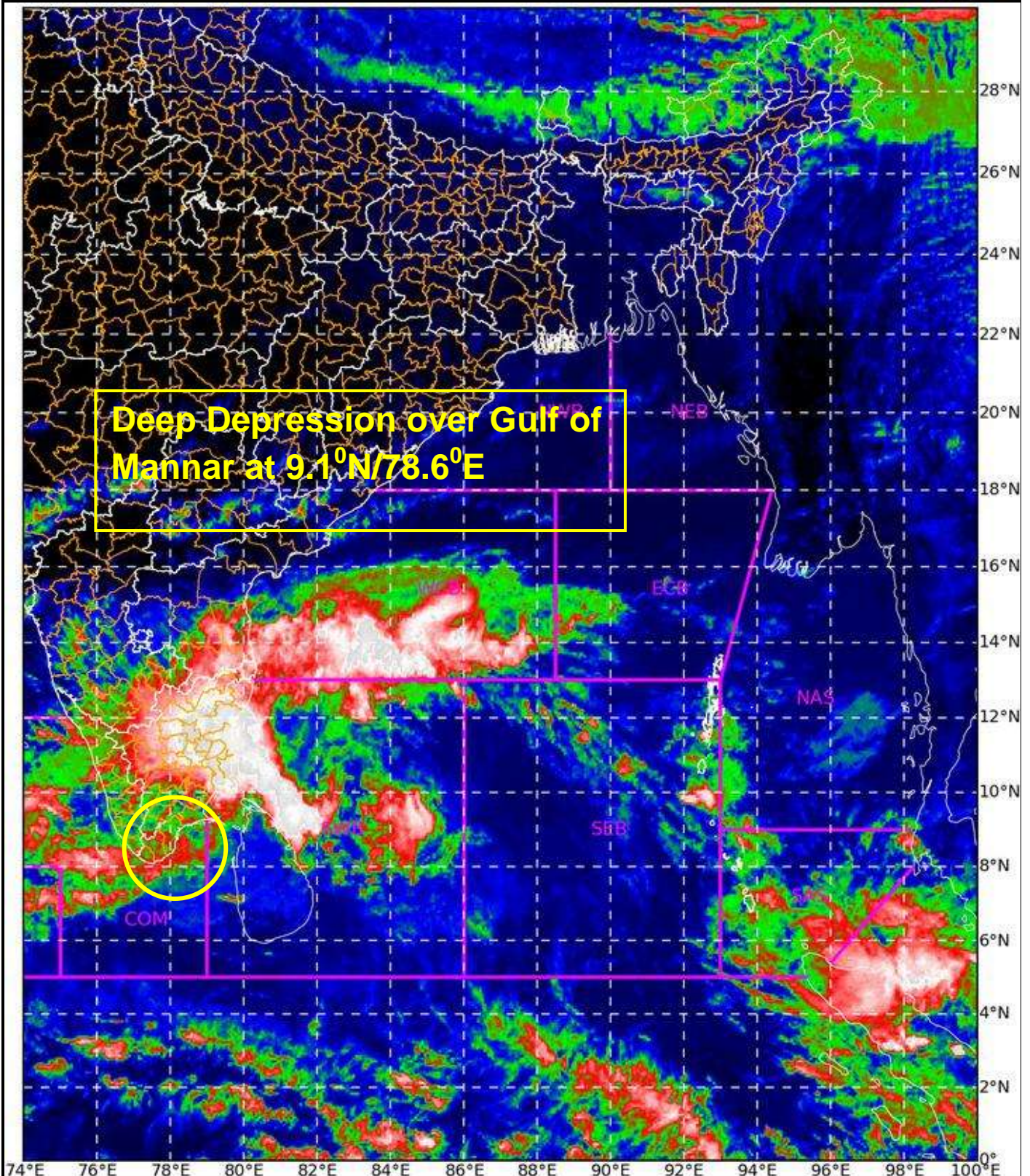
SAT : INSAT-3D IMG

04-12-2020/(0730 to 0757) GMT

IMG_TIR1_TEMP 10.8 um

04-12-2020/(1300 to 1327) IST

L1C Mercator



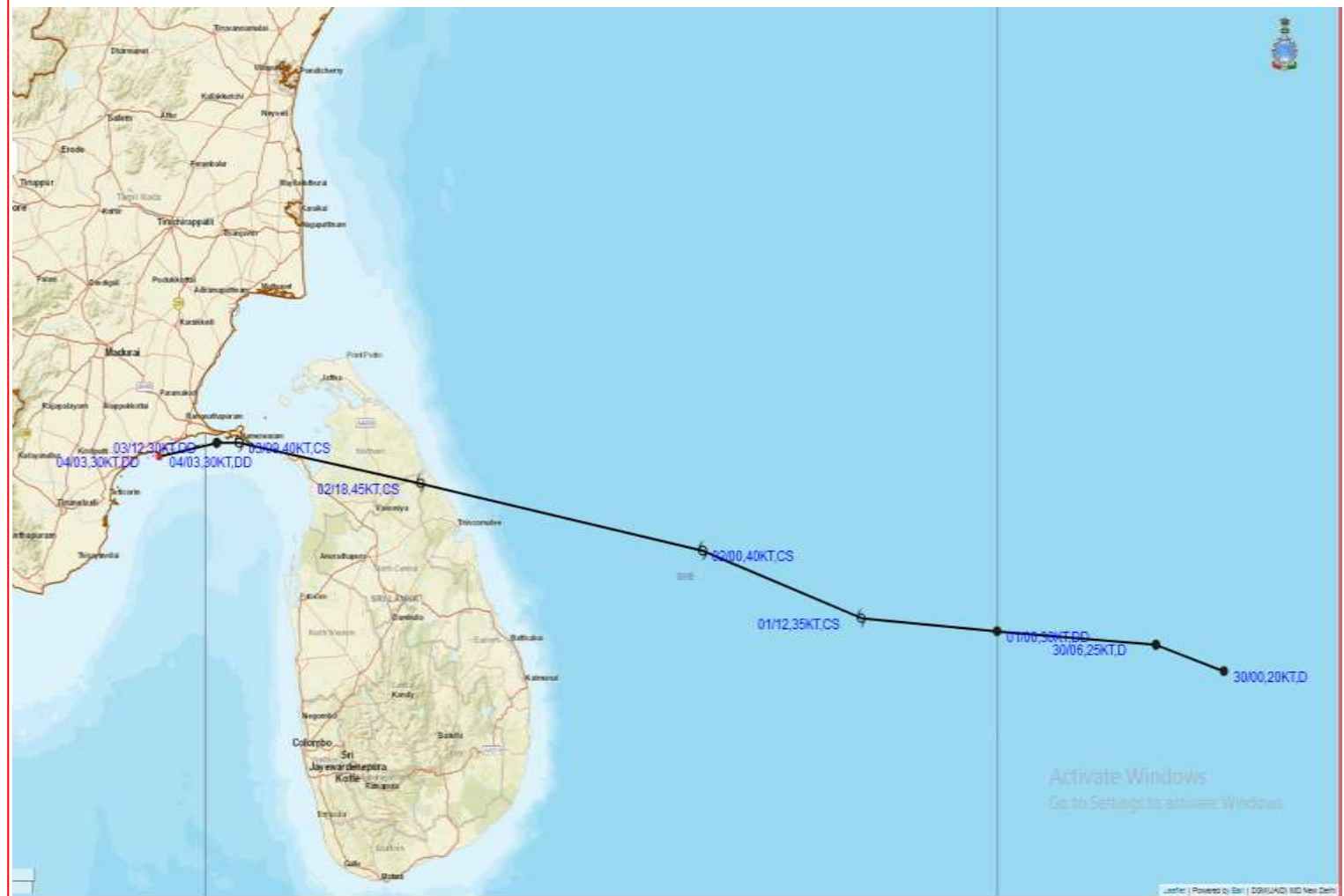
Celsius

IMD, DELHI







Spatial rainfall distribution: Isolated: $\leq 25\%$, A few: 26-50%, Many: 51-75%, Most: 76-100%
Rainfall amount (mm): Heavy rain: 64.5 – 115.5, Very heavy rain: 115.6 – 204.4, Extremely heavy rain: 204.5 or more.



OBSERVED AND FORECAST TRACK ALONGWITH CONE OF UNCERTAINTY OF DEEP DEPRESSION OVER GULF OF MANNAR BASED ON 0300 UTC OF 4TH DECEMBER, 2020.



DATE/TIME IN UTC
IST=UTC + 0530
L: LOW PRESSURE AREA
WML: WELL MARKED LOW PRESSURE AREA
D: DEPRESSION (17-27 KT)
DD: DEEP DEPRESSION (28-33 KT)
CS: CYCLONIC STORM (34-47 KT)
SCS: SEVERE CYCLONIC STORM (48-63KT)
VSCS: VERY SEVERE CYCLONIC STORM (64-89 KT)
ESCS: EXTREMELY SEVERE CYCLONIC STORM (90-119 KT)
SuCS: SUPER CYCLONIC STORM (≥20 KT)

-  LESS THAN 34 KT
-  34-47 KT
-  ≥ 48 KT
-  OBSERVED TRACK
-  FORECAST TRACK
-  CONE OF UNCERTAINTY

Spatial rainfall distribution: Isolated: ≤25%, A few: 26-50%, Many: 51-75%, Most: 76-100%

Rainfall amount (mm): Heavy rain: 64.5 – 115.5, Very heavy rain: 115.6 – 204.4, Extremely heavy rain: 204.5 or more.