



**India Meteorological Department**  
**(Ministry of Earth Sciences)**  
**BULLETIN NO. : 32 (BOB/05/2020)**

**TIME OF ISSUE: 2000 HOURS IST**

**DATED: 04.12.2020**

**FROM: INDIA METEOROLOGICAL DEPARTMENT (FAX NO. 24643965/24699216/24623220)**

**TO: CONTROL ROOM, NDM, MINISTRY OF HOME AFFAIRS (FAX.NO. 23093750)**  
**CONTROL ROOM NDMA (FAX.NO. 26701729)**  
**CABINET SECRETARIAT (FAX.NO.23012284, 23018638)**  
**PS TO HON'BLE MINISTER FOR S & T AND EARTH SCIENCES (FAX NO.23316745)**  
**SECRETARY, MOES, (FAX NO. 24629777)**  
**H.Q. (INTEGRATED DEFENCE STAFF AND CDS) (FAX NO. 23005137/23005147)**  
**DIRECTOR GENERAL, DOORDARSHAN (23385843)**  
**DIRECTOR GENERAL, AIR (23421105, 23421219)**  
**PIB MOES (FAX NO. 23389042)**  
**UNI (FAX NO. 23355841)**  
**D.G. NATIONAL DISASTER RESPONSE FORCE (NDRF) (FAX NO. 26105912, 2436 3260)**  
**DIRECTOR, PUNCTUALITY, INDIAN RAILWAYS (FAX NO. 23388503)**  
**CHIEF SECRETARY, KARNATAKA (FAX NO. 080-22256360, 22258913)**  
**CHIEF SECRETARY, KERALA (FAX NO. 0471-233315)**  
**CHIEF SECRETARY, LAKSHADWEEP ISLANDS (FAX NO. 04896-262184)**  
**CHIEF SECRETARY, ANDAMAN & NICOBAR ISLANDS (FAX NO. 03192- 232656)**  
**CHIEF SECRETARY, ANDHRA PRADESH (FAX NO. 0863-2441029, 08645-246600)**  
**CHIEF SECRETARY, TAMIL NADU (FAX NO. 044-25672304)**  
**CHIEF SECRETARY, PUDUCHERRY (FAX NO. 0413-2337575, 2334145)**

**Sub: Deep Depression weakened into a Depression over Gulf of Mannar**

The Deep Depression over Gulf of Mannar close to Ramanathapuram District coast remained practically stationary during past 18 hours, weakened into a Depression and lay centered at 1730 hrs IST of today, the 04<sup>th</sup> December over Gulf of Mannar near Lat. 9.1°N and Long. 78.6°E close to Ramanathapuram District coast, about 40 km southwest of Ramanathapuram, 70 km west-southwest of Pamban. The associated wind speed is about 45-55 gusting to 65 kmph.

The Depression is likely to remain practically stationary over the same region and weaken into a Well marked Low Pressure Area during next 12 hours.

**Warnings:**

**(i) Rainfall**

- Heavy to very heavy rainfall at isolated places very likely over Tamilnadu and Puducherry during next 24 hours.
- Heavy to very heavy rainfall at isolated places very likely over Kerala & Mahe on 04<sup>th</sup> & 05<sup>th</sup> December.
- Heavy rainfall at isolated places very likely over south coastal Andhra Pradesh on 04<sup>th</sup> & 05<sup>th</sup> December and over Lakshadweep on 05<sup>th</sup> December.

**Spatial rainfall distribution: Isolated: ≤25%, A few: 26-50%, Many: 51-75%, Most: 76-100%**

**Rainfall amount (mm): Heavy rain: 64.5 – 115.5, Very heavy rain: 115.6 – 204.4, Extremely heavy rain: 204.5 or more.**

Sub-Divisions	04 Dec 2020*	05 Dec 2020*
Tamilnadu, Puducherry & Karaikal	Rainfall at most places with Heavy to very heavy rainfall at isolated places	Rainfall at most places with heavy to very heavy falls at isolated places
Kerala & Mahe	Rainfall at most places with heavy to very heavy falls at isolated places	Rainfall at most places with heavy to very heavy falls at isolated places
South Coastal Andhra Pradesh	Rainfall at a few places with heavy rainfall at isolated places	Rainfall at a few places with heavy rainfall at isolated places
Lakshadweep	Rainfall at a few places	Rainfall at most places with heavy falls at isolated places

## (ii) Wind warning

- Squally wind speed reaching 45-55 kmph gusting to 65 kmph is very likely during next 6 hours along and off south Tamilnadu coast (Ramanathapuram, Thoothukudi, Tirunelveli and Kanniyakumari districts). It will gradually decrease to 30-40 kmph gusting to 50 kmph by 5<sup>th</sup> December Morning.
- Squally wind speed reaching 35-45 kmph gusting to 55 kmph very likely to prevail along & off south Kerala coast during next 12 hours.
- Squally wind speed reaching 35-45 kmph gusting to 55 kmph very likely over Lakshadweep-Maldives area and adjoining southeast Arabian Sea from early morning of 05<sup>th</sup> December.

## (iii) Sea condition

- Sea condition is rough to very rough over Gulf of Mannar and adjoining southwest Bay of Bengal, along & off south Tamilnadu, west Sri Lanka coasts during next 24 hours and rough to very rough over Comorin Area, adjoining southeast Arabian Sea, Lakshadweep-Maldives areas and along & off Kerala coast by night of 4<sup>th</sup> December for subsequent 24 hours.

## (iv) Fishermen warning and Action suggested

- Fishermen are advised not to venture into Gulf of Mannar & adjoining southwest Bay of Bengal and along & off south Tamilnadu, north Sri Lanka & south Kerala coasts and Lakshadweep-Maldives area & adjoining southeast Arabian Sea during next 24 hours.

**The next bulletin will be issued at 0230 hrs IST of tomorrow, the 05<sup>th</sup> December, 2020.**

**(R. K. Jenamani)**  
**Scientist-F, RSMC, New Delhi**

*Copy to: ACWC Kolkata/Chennai/CWC Bhubaneswar/CWC Visakhapatnam/CWC Thiruvananthapuram*



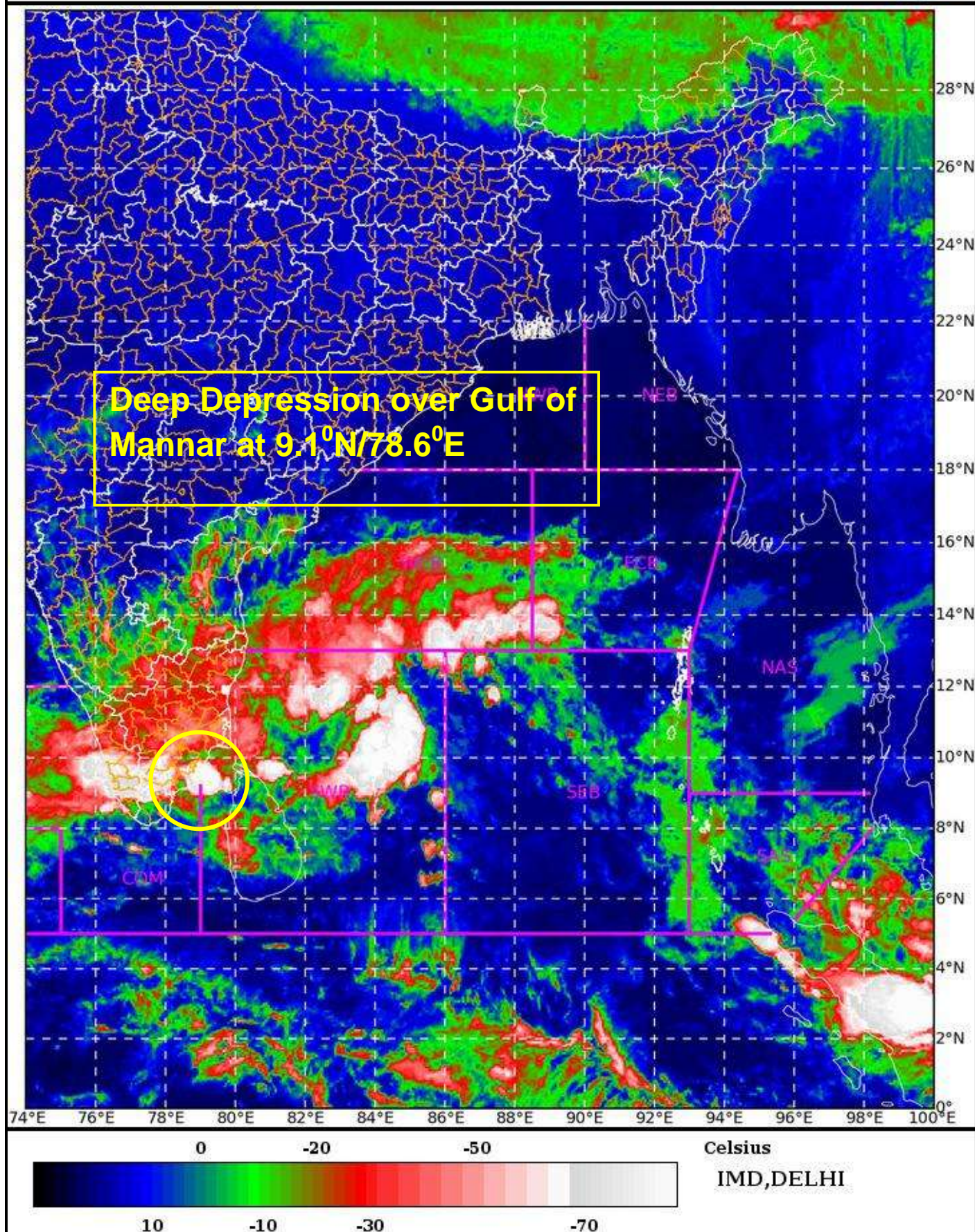
SAT : INSAT-3D IMG

04-12-2020/(1330 to 1356) GMT

IMG\_TIR1\_TEMP 10.8 um

04-12-2020/(1900 to 1926) IST

L1C Mercator



Spatial rainfall distribution: Isolated: ≤25%, A few: 26-50%, Many: 51-75%, Most: 76-100%

Rainfall amount (mm): Heavy rain: 64.5 – 115.5, Very heavy rain: 115.6 – 204.4, Extremely heavy rain: 204.5 or more.





## OBSERVED TRACK OF DEPRESSION OVER GULF OF MANNAR BASED ON 1200 UTC OF 4<sup>TH</sup> DECEMBER, 2020.



DATE/TIME IN UTC  
IST=UTC + 0530  
L: LOW PRESSURE AREA  
WML: WELL MARKED LOW PRESSURE AREA  
D: DEPRESSION (17-27 KT)  
DD: DEEP DEPRESSION (28-33 KT)  
CS: CYCLONIC STORM (34-47 KT)  
SCS: SEVERE CYCLONIC STORM (48-63 KT)  
VSCS: VERY SEVERE CYCLONIC STORM (64-89 KT)  
ESCS: EXTREMELY SEVERE CYCLONIC STORM (90-119 KT)  
SuCS: SUPER CYCLONIC STORM ( $\geq 120$  KT)

● LESS THAN 34 KT  
○ 34-47 KT  
○  $\geq 48$  KT  
— OBSERVED TRACK  
— FORECAST TRACK  
▲ CONE OF UNCERTAINTY

Spatial rainfall distribution: Isolated:  $\leq 25\%$ , A few: 26-50%, Many: 51-75%, Most: 76-100%  
Rainfall amount (mm): Heavy rain: 64.5 – 115.5, Very heavy rain: 115.6 – 204.4, Extremely heavy rain: 204.5 or more.