



India Meteorological Department
(Ministry of Earth Sciences)
BULLETIN NO. : 34 (BOB/05/2020)

TIME OF ISSUE: 0740 HOURS IST

DATED: 05.12.2020

FROM: INDIA METEOROLOGICAL DEPARTMENT (FAX NO. 24643965/24699216/24623220)

TO: CONTROL ROOM, NDM, MINISTRY OF HOME AFFAIRS (FAX.NO. 23093750)
CONTROL ROOM NDMA (FAX.NO. 26701729)
CABINET SECRETARIAT (FAX.NO.23012284, 23018638)
PS TO HON'BLE MINISTER FOR S & T AND EARTH SCIENCES (FAX NO.23316745)
SECRETARY, MOES, (FAX NO. 24629777)
H.Q. (INTEGRATED DEFENCE STAFF AND CDS) (FAX NO. 23005137/23005147)
DIRECTOR GENERAL, DOORDARSHAN (23385843)
DIRECTOR GENERAL, AIR (23421105, 23421219)
PIB MOES (FAX NO. 23389042)
UNI (FAX NO. 23355841)
D.G. NATIONAL DISASTER RESPONSE FORCE (NDRF) (FAX NO. 26105912, 2436 3260)
DIRECTOR, PUNCTUALITY, INDIAN RAILWAYS (FAX NO. 23388503)
CHIEF SECRETARY, KARNATAKA (FAX NO. 080-22256360, 22258913)
CHIEF SECRETARY, KERALA (FAX NO. 0471-233315)
CHIEF SECRETARY, LAKSHADWEEP ISLANDS (FAX NO. 04896-262184)
CHIEF SECRETARY, ANDAMAN & NICOBAR ISLANDS (FAX NO. 03192- 232656)
CHIEF SECRETARY, ANDHRA PRADESH (FAX NO. 0863-2441029, 08645-246600)
CHIEF SECRETARY, TAMIL NADU (FAX NO. 044-25672304)
CHIEF SECRETARY, PUDUCHERRY (FAX NO. 0413-2337575, 2334145)

Sub: Depression over Gulf of Mannar

The Depression over Gulf of Mannar close to Ramanathapuram District coast remained practically stationary during past 30 hours and lay centered at 0530 hrs IST of 05th December over Gulf of Mannar near Lat. 9.1°N and Long. 78.6°E close to Ramanathapuram District coast, about 40 km southwest of Ramanathapuram, 70 km west-southwest of Pamban. The associated wind speed is about 40-50 gusting to 60 kmph.

The Depression is likely to remain practically stationary over the same region and weaken into a Well Marked Low Pressure Area during next 12 hours.

Warnings:

(i) Rainfall

- Heavy to very heavy rainfall at isolated places very likely over Tamilnadu & Puducherry and Kerala & Mahe on 05th & 06th December.
- Heavy rainfall at isolated places very likely over Lakshadweep on 05th & 06th December.

Spatial rainfall distribution: Isolated: ≤25%, A few: 26-50%, Many: 51-75%, Most: 76-100%
Rainfall amount (mm): Heavy rain: 64.5 – 115.5, Very heavy rain: 115.6 – 204.4, Extremely heavy rain: 204.5 or more.

Sub-Divisions	05 Dec 2020*	06 Dec 2020*
Tamilnadu, Puducherry & Karaikal	Rainfall at most places with heavy to very heavy falls at isolated places	Rainfall at most places with heavy to very heavy falls at isolated places
Kerala & Mahe	Rainfall at most places with heavy to very heavy falls at isolated places	Rainfall at most places with heavy to very heavy falls at isolated places
Lakshadweep	Rainfall at most places with heavy falls at isolated places	Rainfall at most places with heavy falls at isolated places

(ii) Wind warning

- Squally wind speed reaching 40-50 kmph gusting to 60 kmph is very likely along and off south Tamilnadu coast (Ramanathapuram, Thoothukudi, Tirunelveli and Kanniyakumari districts) during next 12 hours. It will gradually decrease to 30-40 kmph gusting to 50 kmph thereafter.
- Squally wind speed reaching 35-45 kmph gusting to 55 kmph very likely to prevail along & off south Kerala coast during next 12 hours.
- Squally wind speed reaching 35-45 kmph gusting to 55 kmph very likely over Lakshadweep-Maldives area and adjoining southeast Arabian Sea during next 24 hours.

(iii) Sea condition

- Sea condition is rough to very rough over Gulf of Mannar and adjoining southwest Bay of Bengal, along & off south Tamilnadu, west Sri Lanka coasts, Comorin Area, adjoining southeast Arabian Sea, Lakshadweep-Maldives areas and along & off Kerala coast during next 24 hours.

(iv) Fishermen warning and Action suggested

- Fishermen are advised not to venture into Gulf of Mannar & adjoining southwest Bay of Bengal and along & off south Tamilnadu, north Sri Lanka & south Kerala coasts and Lakshadweep-Maldives area & adjoining southeast Arabian Sea during next 24 hours.

The next bulletin will be issued at 1130 hrs IST of today, the 05th December, 2020.

(S.P. Singh)
Scientist-C, RSMC, New Delhi

Copy to: ACWC Kolkata/Chennai/CWC Bhubaneswar/CWC Visakhapatnam/CWC Thiruvananthapuram

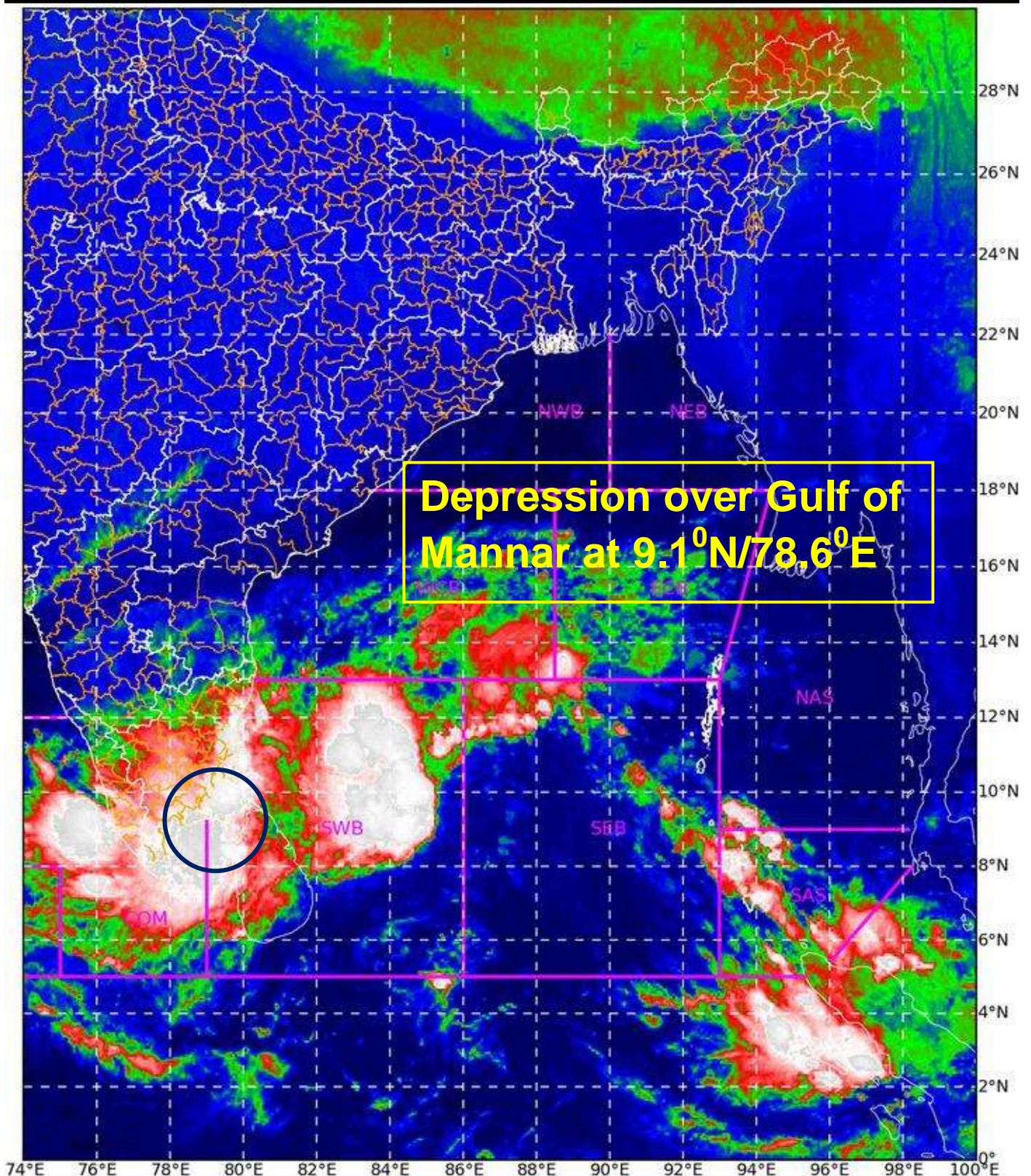
SAT : INSAT-3D IMG

05-12-2020/(0100 to 0126) GMT

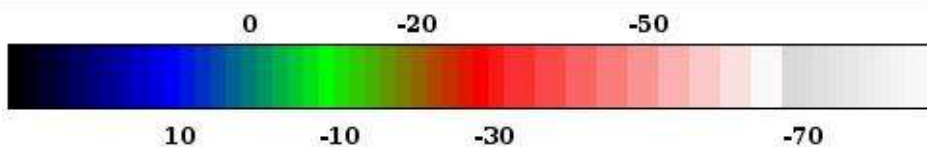
IMG_TIR1_TEMP 10.8 um

05-12-2020/(0630 to 0656) IST

L1C Mercator



Depression over Gulf of Mannar at 9.1°N/78.6°E

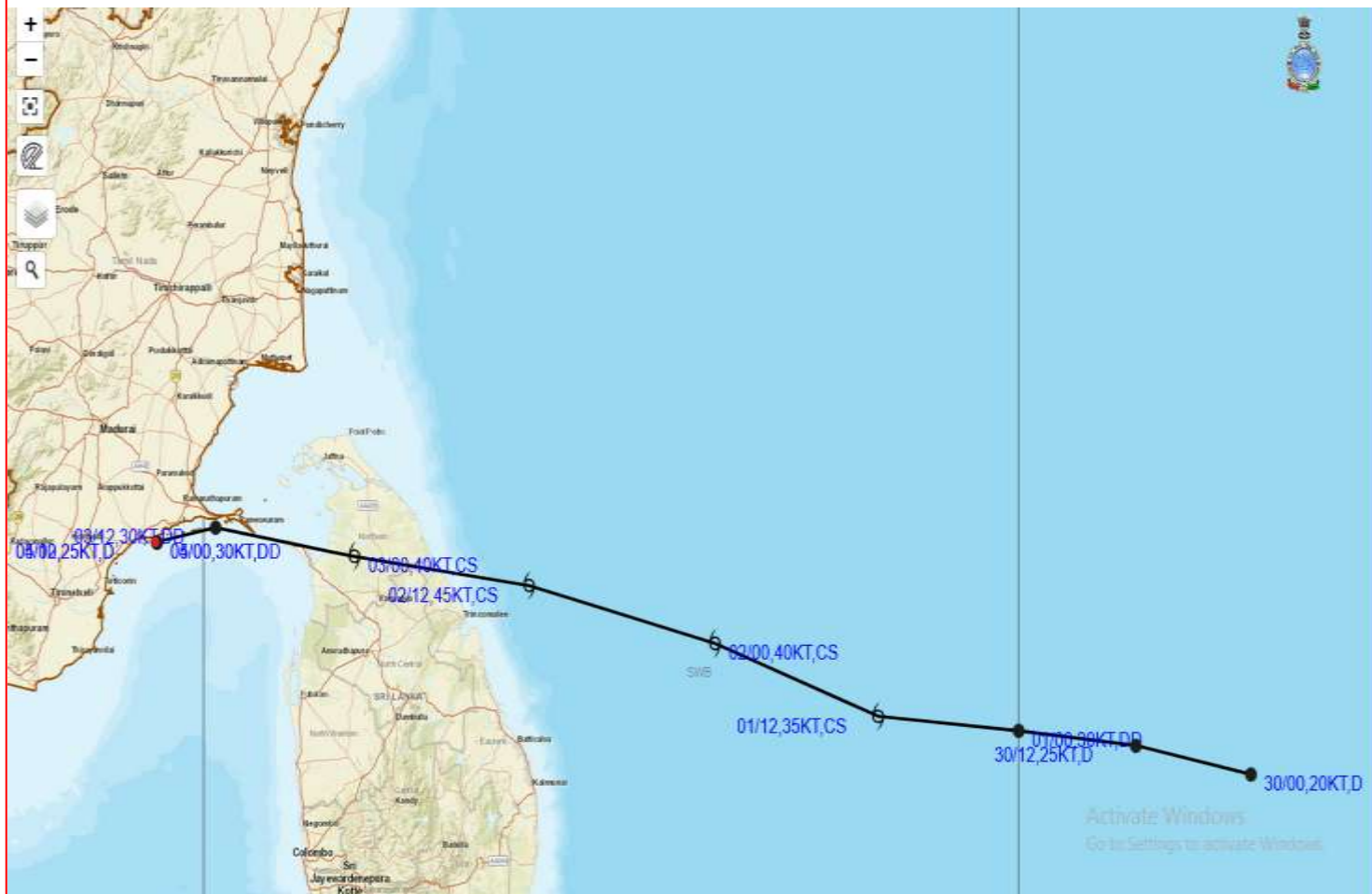


Celsius
IMD, DELHI

Spatial rainfall distribution: Isolated: $\leq 25\%$, A few: 26-50%, Many: 51-75%, Most: 76-100%
Rainfall amount (mm): Heavy rain: 64.5 – 115.5, Very heavy rain: 115.6 – 204.4, Extremely heavy rain: 204.5 or more.



OBSERVED TRACK OF DEPRESSION OVER GULF OF MANNAR BASED ON 0000 UTC OF 5TH DECEMBER, 2020.



DATE/TIME IN UTC

IST=UTC + 0530

L: LOW PRESSURE AREA

WML: WELL MARKED LOW PRESSURE AREA

D: DEPRESSION (17-27 KT)

DD: DEEP DEPRESSION (28-33 KT)

CS: CYCLONIC STORM (34-47 KT)

SCS: SEVERE CYCLONIC STORM (48-63 KT)

VSCS: VERY SEVERE CYCLONIC STORM (64-89 KT)

ESCS: EXTREMELY SEVERE CYCLONIC STORM (90-119 KT)

SuCS: SUPER CYCLONIC STORM (≥ 120 KT)



LESS THAN 34 KT



34-47 KT



≥ 48 KT



OBSERVED TRACK



FORECAST TRACK



CONE OF UNCERTAINTY

Spatial rainfall distribution: Isolated: $\leq 25\%$, A few: 26-50%, Many: 51-75%, Most: 76-100%

Rainfall amount (mm): Heavy rain: 64.5 – 115.5, Very heavy rain: 115.6 – 204.4, Extremely heavy rain: 204.5 or more.