



**India Meteorological Department
Earth System Science
Organisation
(Ministry of Earth Sciences)**

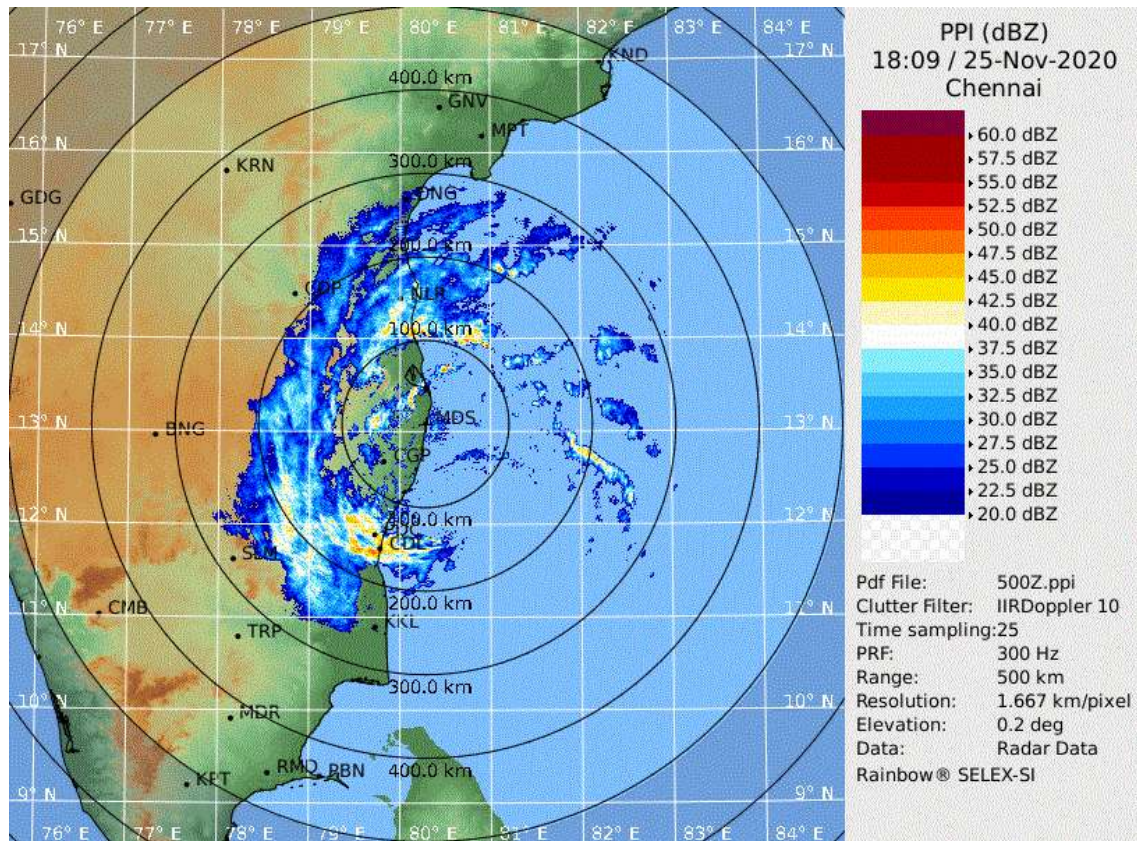
HOURLY UPDATE ON VERY SEVERE CYCLONIC STORM “NIVAR”

BULLETIN NO. 07

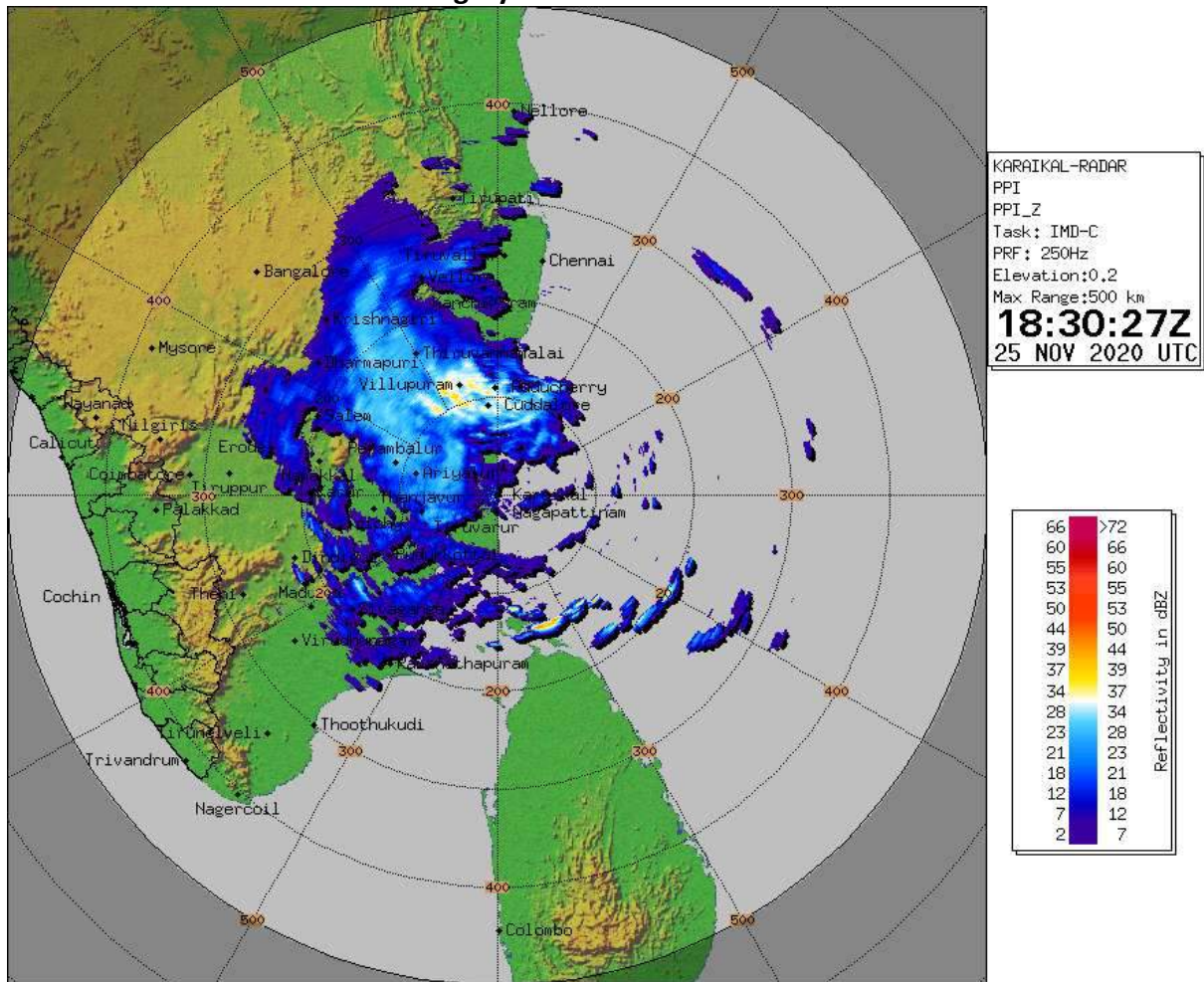
DATE: 26-11-2020

TIME OF ISSUE: 0030 HRS IST

DATE/TIME (IST) OF OBSERVATION	2330 HRS IST OF 25-11-2020 / 1800 UTC OF 25.11.2020
INTENSITY	VERY SEVERE CYCLONIC STORM WIND SPEED: 120-130 KMPH GUSTING TO 145 KMPH.
LOCATION LATITUDE/LONGITUDE	OVER SOUTHWEST BAY OF BENGAL NEAR LAT. 12.00°N AND LONG. 80.1°E , ABOUT: <ul style="list-style-type: none">• 45 KM EAST-NORTHEAST OF CUDDALORE.• 30 KM EAST OF PUDUCHERRY.• 110 KM SOUTH-SOUTHWEST OF CHENNAI.
PAST MOVEMENT	CENTRE MOVED NORTHWESTWARDS WITH A SPEED OF 16 KMPH DURING PAST 06 HOURS.
OBSERVATIONS FROM THE COAST	<u>.RAINFALL (MM) DURING 08:30 TO 2230 HOURS IST OF 25TH NOVEMBER 2020:</u> NAGAPATNAM-62, KARAİKAL-84, CUDDALORE-227, PUDUCHERRY-187 AND CHENNAI-89.
FORECAST MOVEMENT, INTENSITY AND LANDFALL	LANDFALL PROCESS CONTINUES. CENTRE OF CYCLONE TO CROSS COAST NEAR PUDUCHERRY WITHIN NEXT 1-2 HOURS WITH WIND SPEED OF 120-130 KMPH GUSTING TO 145 KMPH.
REMARKS	MAJORITY OF CONVECTIVE CLOUDS HAVE ENTERED INTO LAND. SYSTEM IS INTERACTING WITH LAND SURFACE.



DWR Chennai Imagery based on 2339 IST of 25th November



DWR Karaikal Imagery based on 0000 IST of 26th November

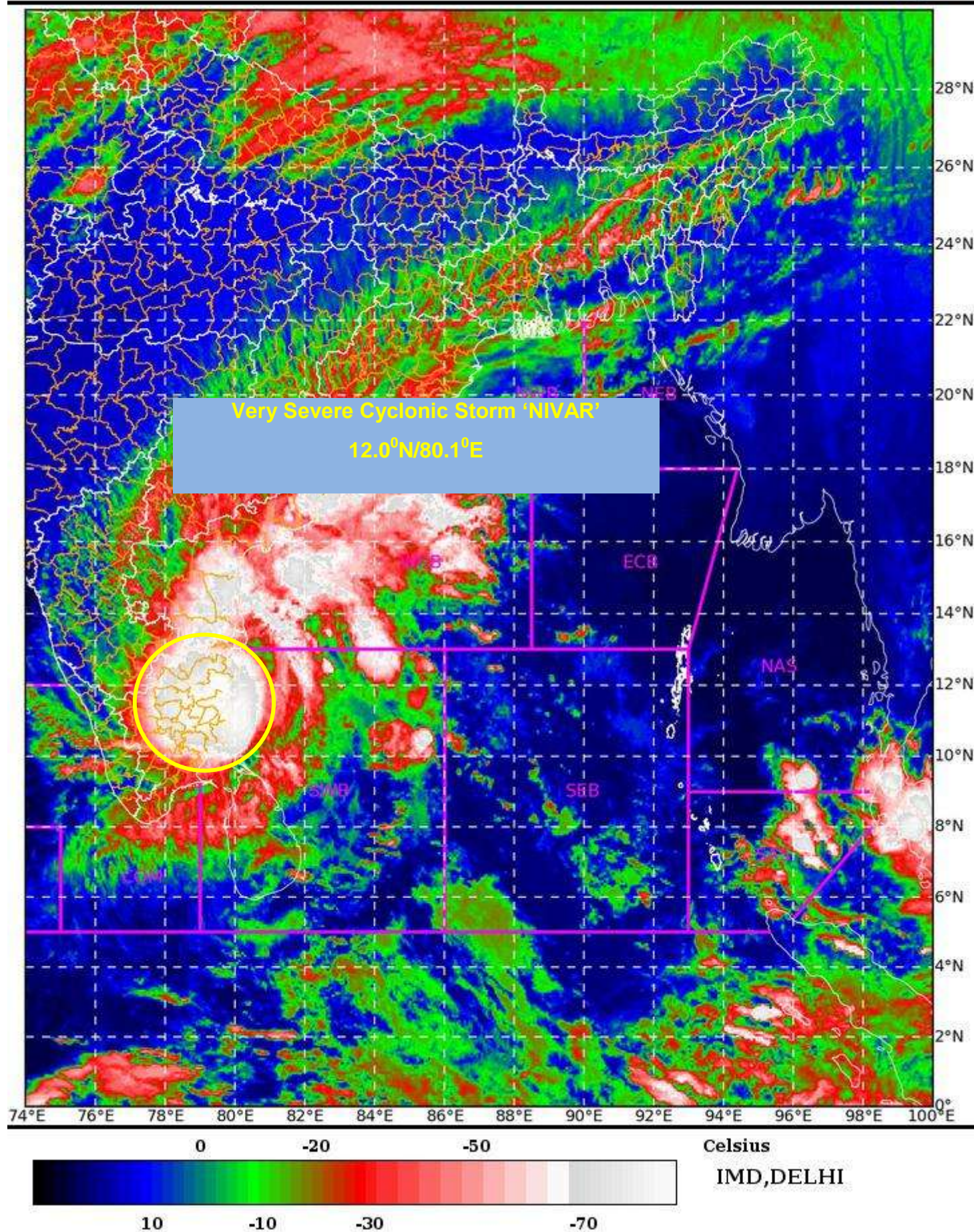
SAT : INSAT-3D IMG

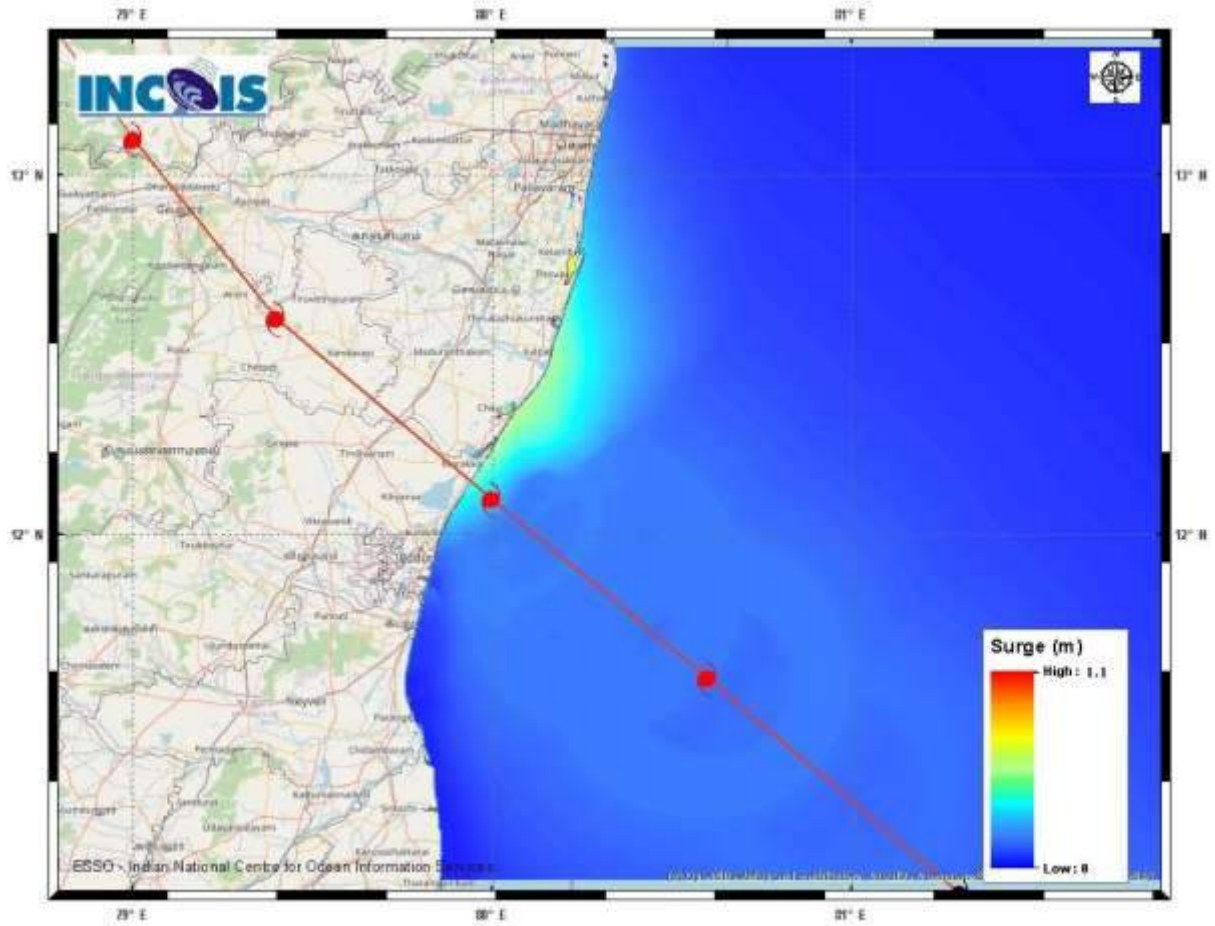
25-11-2020/(1700 to 1726) GMT

IMG_TIR1_TEMP 10.8 um

25-11-2020/(2230 to 2256) IST

L1C Mercator





Expected Maximum Storm Surge * 1.1 m Near Kancheepuram, Tamil Nadu.
Expected Maximum Inundation Extent 0.2 Km near Kancheepuram.

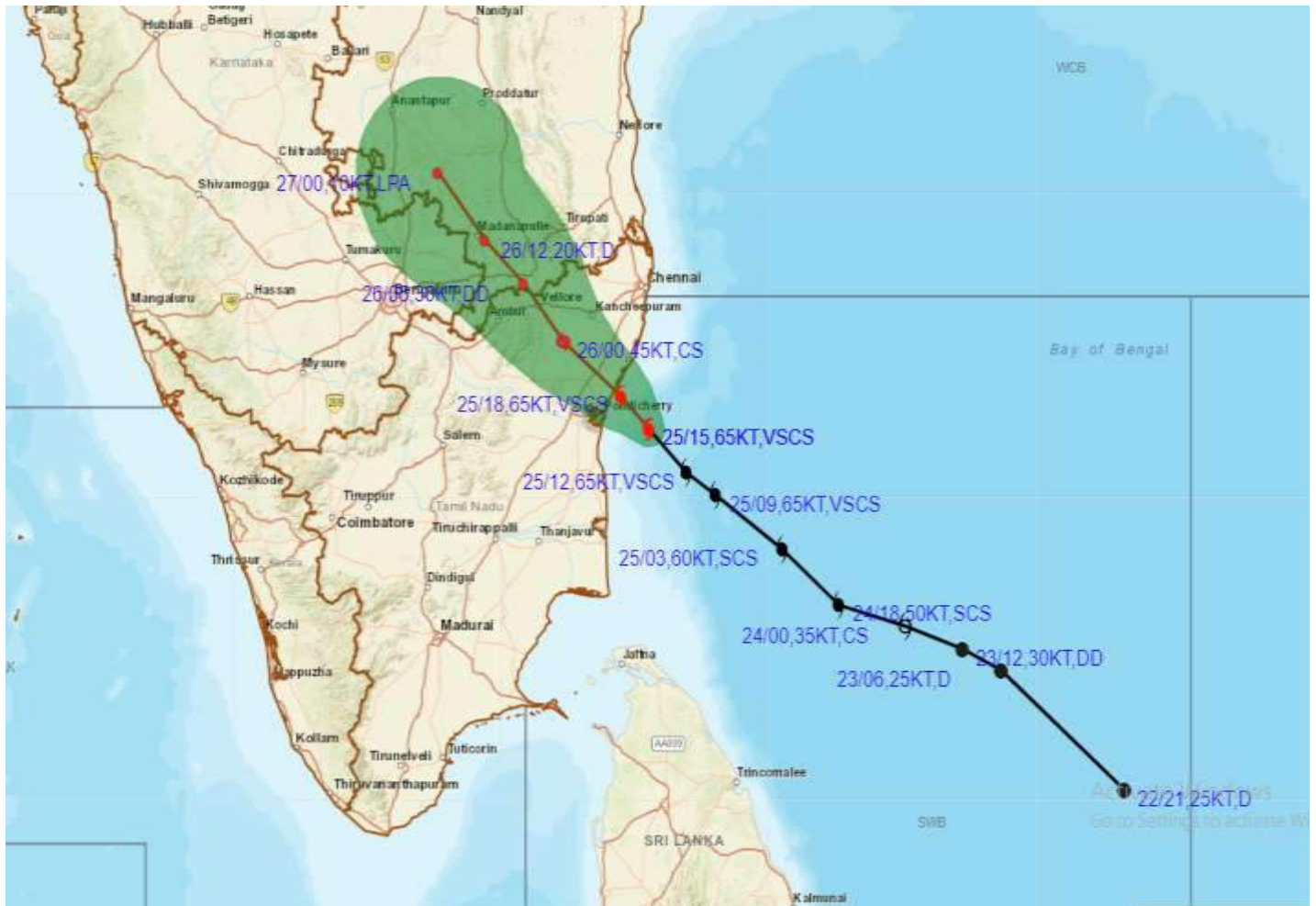
STORM SURGE HEIGHT INFORMATION:

* The below listed surge heights are over and above astronomical tide.

MANDAL/TALUK	DISTRICT	STATE / UNION TERRITORY	NEAREST PLACE OF HABITATION	STORM SURGE (m) *	EXPECTED INUNDATION EXTENT (km)
Chengalpattu	Kancheepuram	Tamil Nadu	Thiruporur	0.5-1.1	Upto 0.2
Cheyyur	Kancheepuram	Tamil Nadu	Kadalur	0.4-0.9	Nil
Mannargudi	Thiruvarur	Tamil Nadu	Thiruvarur	0.2-0.5	Nil
Ponneri	Thiruvallur	Tamil Nadu	Karimanal	0.2-0.4	Nil
Tiruvottiyur	Thiruvallur	Tamil Nadu	Saidapet	0.2-0.5	Nil
Puducherry	Puducherry	Puducherry	Bahour Commune Panchayat	0.4-0.5	Nil
Tindivanam	Viluppuram	Tamil Nadu	Ozhukarai Municipality	0.5-0.7	Upto 0.1
Tirutturaippundi	Nagapattinam	Tamil Nadu	Vaimedu west	0.2-0.7	Nil



OBSERVED AND FORECAST TRACK ALONGWITH CONE OF UNCERTAINTY OF VERY SEVERE CYCLONIC STORM NIVAR OVER SOUTHWEST BAY OF BENGAL BASED ON 1500UTC OF 25TH NOVEMBER, 2020.

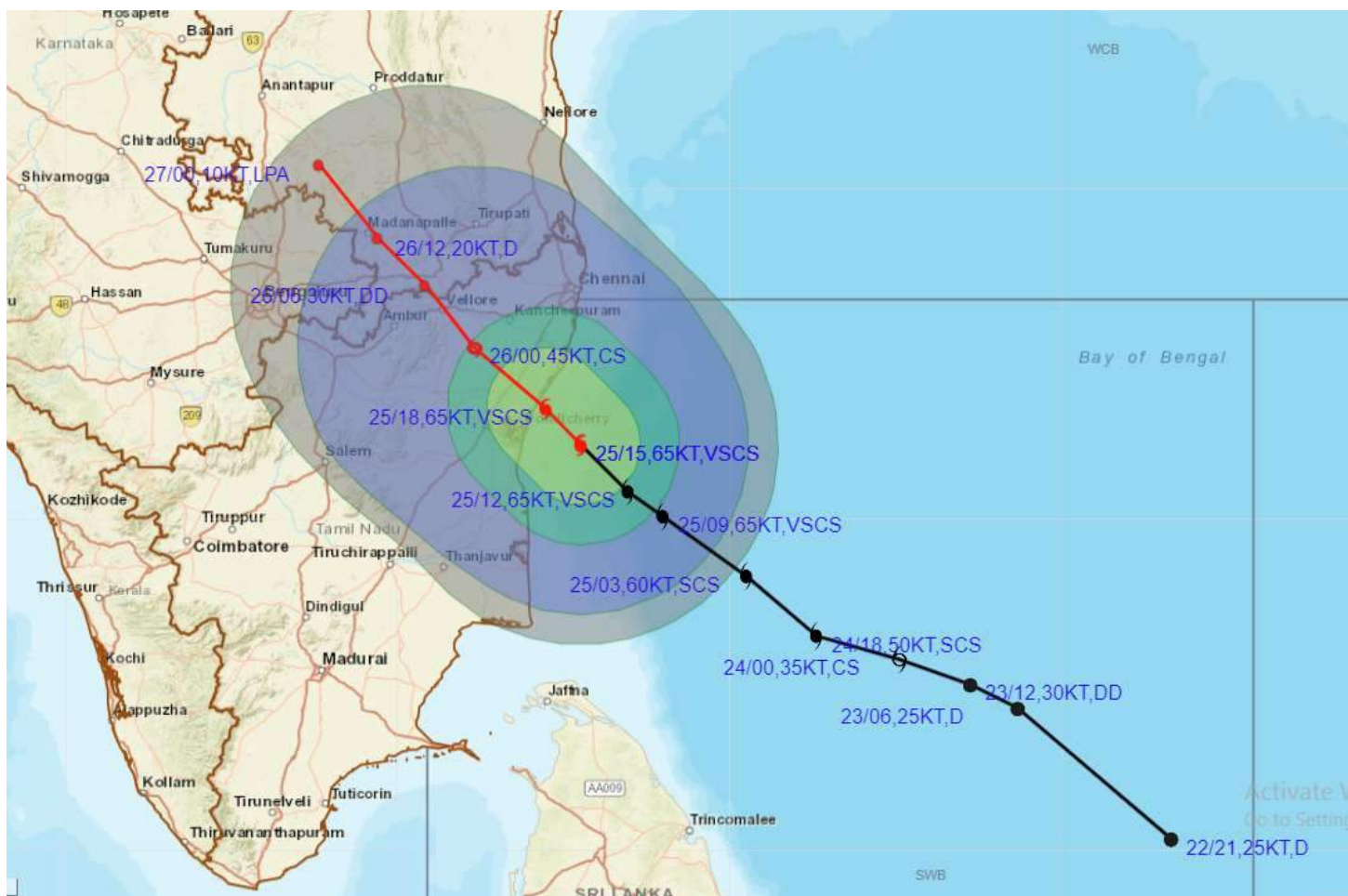


DATE/TIME IN UTC
 IST=UTC + 0530
 L: LOW PRESSURE AREA
 WML: WELL MARKED LOW PRESSURE AREA
 D: DEPRESSION (17-27 KT)
 DD: DEEP DEPRESSION (28-33 KT)
 CS: CYCLONIC STORM (34-47 KT)
 SCS: SEVERE CYCLONIC STORM (48-63KT)
 VSCS: VERY SEVERE CYCLONIC STORM (64-89 KT)
 ESCS: EXTREMELY SEVERE CYCLONIC STORM (90-119 KT)
 SuCS: SUPER CYCLONIC STORM (\geq 120 KT)

● LESS THAN 34 KT
 ⬮ 34-47 KT
 ⬮ \geq 48 KT
 — OBSERVED TRACK
 — FORECAST TRACK
 ▲ CONE OF UNCERTAINTY



OBSERVED AND FORECAST TRACK ALONGWITH QUADRANT WIND DISTRIBUTION OF VERY SEVERE CYCLONIC STORM NIVAR OVER SOUTHWEST BAY OF BENGAL BASED ON 1500UTC OF 25TH NOVEMBER, 2020



DATE/TIME IN UTC

IST=UTC + 0530

L: LOW PRESSURE AREA

WML: WELL MARKED LOW PRESSURE AREA

D: DEPRESSION (17-27 KT)

DD: DEEP DEPRESSION (28-33 KT)

CS: CYCLONIC STORM (34-47 KT)

SCS: SEVERE CYCLONIC STORM (48-63KT)

VSCS: VERY SEVERE CYCLONIC STORM (64-89 KT)

ESCS: EXTREMELY SEVERE CYCLONIC STORM (90-119 KT)

SuCS: SUPER CYCLONIC STORM (≥ 120 KT)

● LESS THAN 34 KT

○ 34-47 KT

● ≥ 48 KT

— OBSERVED TRACK

— FORECAST TRACK

— CONE OF UNCERTAINTY

AREA OF MAXIMUM SUSTAINED WIND SPEED:

— 28-33 KT (52-61 KMPH)

— 34-49 KT (62-91 KMPH)

— 50-63 KT (92-117 KMPH)

— ≥ 64 KT (≥118 KMPH)

IMPACT OVER THE SEA

MSW (knot/kmph)	Impact	Action
28-33 (52-61)	Very rough seas	Total suspension of fishing operations
34-49 (62-91)	High to very high seas	Total suspension of fishing operations
50-63 (92-117)	Very high seas	Total suspension of fishing operations
≥ 64 (≥118)	Phenomenal	Total suspension of fishing operations