



**India Meteorological Department**  
**(Ministry of Earth Sciences)**  
**BULLETIN NO. : 35 (BOB/05/2020)**

**TIME OF ISSUE: 1100 HOURS IST**

**DATED: 05.12.2020**

**FROM: INDIA METEOROLOGICAL DEPARTMENT (FAX NO. 24643965/24699216/24623220)**

**TO: CONTROL ROOM, NDM, MINISTRY OF HOME AFFAIRS (FAX.NO. 23093750)**  
**CONTROL ROOM NDMA (FAX.NO. 26701729)**  
**CABINET SECRETARIAT (FAX.NO.23012284, 23018638)**  
**PS TO HON'BLE MINISTER FOR S & T AND EARTH SCIENCES (FAX NO.23316745)**  
**SECRETARY, MOES, (FAX NO. 24629777)**  
**H.Q. (INTEGRATED DEFENCE STAFF AND CDS) (FAX NO. 23005137/23005147)**  
**DIRECTOR GENERAL, DOORDARSHAN (23385843)**  
**DIRECTOR GENERAL, AIR (23421105, 23421219)**  
**PIB MOES (FAX NO. 23389042)**  
**UNI (FAX NO. 23355841)**  
**D.G. NATIONAL DISASTER RESPONSE FORCE (NDRF) (FAX NO. 26105912, 2436 3260)**  
**DIRECTOR, PUNCTUALITY, INDIAN RAILWAYS (FAX NO. 23388503)**  
**CHIEF SECRETARY, KARNATAKA (FAX NO. 080-22256360, 22258913)**  
**CHIEF SECRETARY, KERALA (FAX NO. 0471-233315)**  
**CHIEF SECRETARY, LAKSHADWEEP ISLANDS (FAX NO. 04896-262184)**  
**CHIEF SECRETARY, ANDAMAN & NICOBAR ISLANDS (FAX NO. 03192- 232656)**  
**CHIEF SECRETARY, ANDHRA PRADESH (FAX NO. 0863-2441029, 08645-246600)**  
**CHIEF SECRETARY, TAMIL NADU (FAX NO. 044-25672304)**  
**CHIEF SECRETARY, PUDUCHERRY (FAX NO. 0413-2337575, 2334145)**

**Sub: Depression over Gulf of Mannar**

The Depression over Gulf of Mannar close to Ramanathapuram District coast remained practically stationary during past 33 hours and lay centered at 0830 hrs IST of 05<sup>th</sup> December over Gulf of Mannar near Lat. 9.1°N and Long. 78.6°E close to Ramanathapuram District coast, about 40 km southwest of Ramanathapuram, 70 km west-southwest of Pamban. The associated wind speed is about 40-50 gusting to 60 kmph.

The Depression is likely to remain practically stationary over the same region and weaken into a Well Marked Low Pressure Area during next 12 hours.

**Warnings:**

**(i) Rainfall**

- Heavy to very heavy rainfall at isolated places very likely over Tamilnadu & Puducherry on 05<sup>th</sup> & 06<sup>th</sup> December.
- Heavy rainfall at isolated places over south Kerala & Mahe on 05<sup>th</sup> and heavy to very heavy rainfall at isolated places very likely over Kerala on 06<sup>th</sup> December.
- Heavy to very heavy rainfall at isolated places very likely over Lakshadweep on 05<sup>th</sup> & 06<sup>th</sup> December.

Spatial rainfall distribution: Isolated: ≤25%, A few: 26-50%, Many: 51-75%, Most: 76-100%  
Rainfall amount (mm): Heavy rain: 64.5 – 115.5, Very heavy rain: 115.6 – 204.4, Extremely heavy rain: 204.5 or more.

Sub-Divisions	05 Dec 2020*	06 Dec 2020*
Tamilnadu, Puducherry & Karaikal	Rainfall at most places with heavy to very heavy falls at isolated places	Rainfall at most places with heavy to very heavy falls at isolated places
South Kerala	Rainfall at most places with heavy falls at isolated places	Rainfall at most places with heavy to very heavy falls at isolated places
North Kerala & Mahe	Rainfall at many places	Rainfall at most places with heavy to very heavy falls at isolated places
Lakshadweep	Rainfall at most places with heavy to very heavy falls at isolated places	Rainfall at most places with heavy to very heavy falls at isolated places

## (ii) Wind warning

- Squally wind speed reaching 40-50 kmph gusting to 60 kmph is very likely over Gulf of Mannar & adjoining southwest Bay of Bengal, along & off south Tamilnadu coast (Ramanathapuram, Thoothukudi, Tirunelveli and Kanniyakumari districts) during next 12 hours. It will gradually decrease to 35-45 kmph gusting to 55 kmph for subsequent 12 hours.
- Squally wind speed reaching 35-45 kmph gusting to 55 kmph very likely over Lakshadweep-Maldives & Comorin area, southeast Arabian Sea and along & off south Kerala coast on 5<sup>th</sup> and 6<sup>th</sup> December.

## (iii) Sea condition

- Sea condition will be rough to very rough over Gulf of Mannar & adjoining southwest Bay of Bengal, along & off south Tamilnadu coast (Ramanathapuram, Thoothukudi, Tirunelveli and Kanniyakumari districts) on 5<sup>th</sup> December and improve thereafter.
- Sea condition will be rough to very rough over Lakshadweep-Maldives & Comorin area, southeast Arabian Sea and along & off south Kerala coast on 5<sup>th</sup> and 6<sup>th</sup> December.

## (iv) Fishermen warning and Action suggested

- Fishermen are advised not to venture into Gulf of Mannar & adjoining southwest Bay of Bengal, along & off south Tamilnadu coast on 5<sup>th</sup>.
- Fishermen are advised not to venture into Lakshadweep-Maldives & Comorin area, southeast Arabian Sea and along & off south Kerala coast on 5<sup>th</sup> and 6<sup>th</sup> December.

**The next bulletin will be issued at 1430 hrs IST of today, the 05<sup>th</sup> December, 2020.**

**(R K Jenamani)**  
**Scientist-F, RSMC, New Delhi**

*Copy to: ACWC Kolkata/Chennai/CWC Bhubaneswar/CWC Visakhapatnam/CWC Thiruvananthapuram*

**Spatial rainfall distribution: Isolated: ≤25%, A few: 26-50%, Many: 51-75%, Most: 76-100%**  
**Rainfall amount (mm): Heavy rain: 64.5 – 115.5, Very heavy rain: 115.6 – 204.4, Extremely heavy rain: 204.5 or more.**

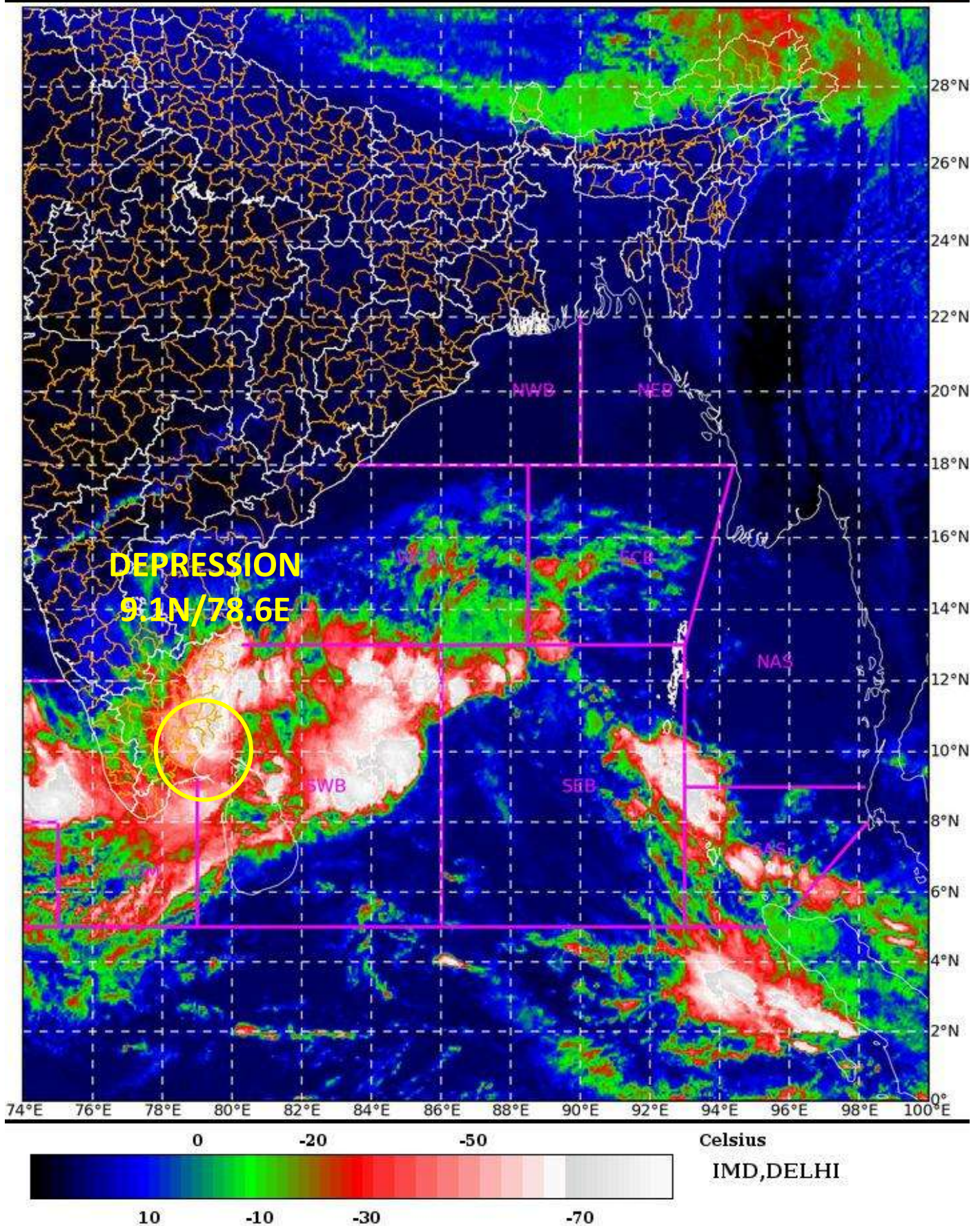
SAT : INSAT-3D IMG

05-12-2020/(0430 to 0457) GMT

IMG\_TIR1\_TEMP 10.8 um

05-12-2020/(1000 to 1027) IST

L1C Mercator

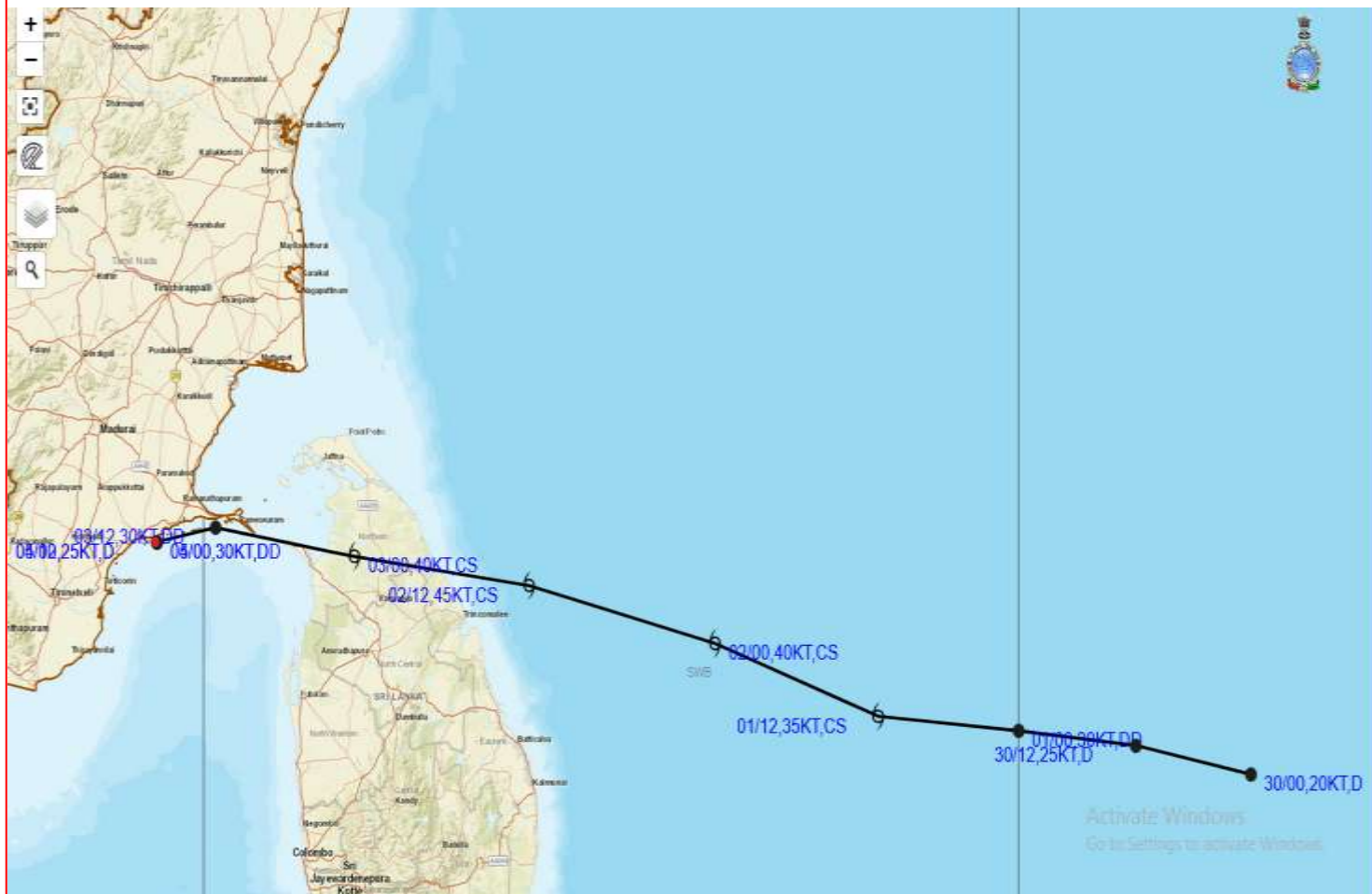


Spatial rainfall distribution: Isolated:  $\leq 25\%$ , A few: 26-50%, Many: 51-75%, Most: 76-100%

Rainfall amount (mm): Heavy rain: 64.5 – 115.5, Very heavy rain: 115.6 – 204.4, Extremely heavy rain: 204.5 or more.



## OBSERVED TRACK OF DEPRESSION OVER GULF OF MANNAR BASED ON 0300 UTC OF 5<sup>TH</sup> DECEMBER, 2020.



### DATE/TIME IN UTC

IST=UTC + 0530

L: LOW PRESSURE AREA

WML: WELL MARKED LOW PRESSURE AREA

D: DEPRESSION (17-27 KT)

DD: DEEP DEPRESSION (28-33 KT)

CS: CYCLONIC STORM (34-47 KT)

SCS: SEVERE CYCLONIC STORM (48-63KT)

VSCS: VERY SEVERE CYCLONIC STORM (64-89 KT)

ESCS: EXTREMELY SEVERE CYCLONIC STORM (90-119 KT)

SuCS: SUPER CYCLONIC STORM ( $\geq 120$  KT)

● LESS THAN 34 KT

○ 34-47 KT

⊗  $\geq 48$  KT

— OBSERVED TRACK

— FORECAST TRACK

▲ CONE OF UNCERTAINTY

Spatial rainfall distribution: Isolated:  $\leq 25\%$ , A few: 26-50%, Many: 51-75%, Most: 76-100%

Rainfall amount (mm): Heavy rain: 64.5 – 115.5, Very heavy rain: 115.6 – 204.4, Extremely heavy rain: 204.5 or more.