



India Meteorological Department
Ministry of Earth Sciences

Regional Meteorological Centre
6, College Road, Chennai 600 006

**HEAVY TO VERY HEAVY RAINFALL WITH ISOLATED EXTREMELY HEAVY
RAINFALL WARNING UPDATE**

UPDATE No.2

DATE: 11.11.21

TIME OF ISSUE: 04:00 HRS IST

DATE/TIME (IST) OF OBSERVATION	03:45 HRS IST OF 11.11.21
Realised Rainfall Reports	<p>(i) Recurrent <i>moderate</i> rainfall activity at <i>many</i> places with <i>isolated heavy to very heavy</i> rain occurred over the coastal and adjoining districts of Tamil Nadu; Puducherry and Karaikal during the past 11 days. Significant rainfall during the past 12 days as on 24 hrs ending 0830 IST of 29.10.21 to 09.11.21, depicted in map form, is given in Fig.1.</p> <p>(ii) <i>Heavy to very heavy</i> rain occurred at a few places over Nagappattinam, Tiruvarur, Thanjavur, Mayiladuthurai, Cuddalore and Pudukkottai districts of Tamil Nadu and Karaikal area with <i>extremely heavy</i> falls at isolated places over Nagapattinam, Tiruvarur and Karaikal area during the past 24 hours ending 08:30 IST of 10.11.21. Significant rainfall during the past 24 hours ending 0830 IST of 10.11.21 is shown in Fig.2.</p> <p>(iii) Significant rainfall (mm) during the period 0830 IST of 10.11.21 to 0345 IST of 11.11.21: Ennore port – 146.0 Cheyyur (Chengalpattu district) – 78.5 Chennai AWS – 128.5 Chennai MRC Nagar ARG – 128.0 Goodwill school, Villivakkam (Tiruvallur district) - ARG – 101.0 ACS Medical college (Kancheepuram district) ARG – 108.0 Taramani ARG (Chennai district) – 115.5 Meenambakkam -ISRO -93.0 Satyabhama University (Kancheepuram district) - 103.0 Kattapakkam-KVK (Kancheepuram district) – 89.0 Tirur-KVK – 81.5 Cheyyur ARG – 78.5</p>

Forecast for 10.11.21	<p><u>Thunderstorm with heavy to very heavy rain at isolated places with extremely heavy falls at one or two places</u> is very likely to occur over Cuddalore, Villupuram, Chengalpattu, Kancheepuram, Chennai, Tiruvallur & Ranipet districts of Tamil Nadu and Puducherry</p> <p><u>Thunderstorm with heavy to very heavy rain</u> is very likely to occur Nagapattinam, Tiruvarur, Thanjavur, Mayiladuthurai, Kallakurichi, Tiruvannamalai, Vellore, Tirupattur and Salem districts of Tamil Nadu and Karaikal area.</p> <p><u>Thunderstorm with heavy rain</u> at isolated places is also very likely to occur Dharmapuri, Krishnagiri, Namakkal, Ariyalur, Perambalur, Pudukkottai, Coimbatore, Erode and Tiruchirappalli.</p>
Impact expected:	<ul style="list-style-type: none"> ✓ Low lying areas marooned ✓ Severe damages to crops ✓ Uprooting of trees ✓ Damage to formal / informal settlements ✓ Increase in water levels in rivers, lakes & reservoirs ✓ Inland / riverine flooding ✓ Damages to cattle

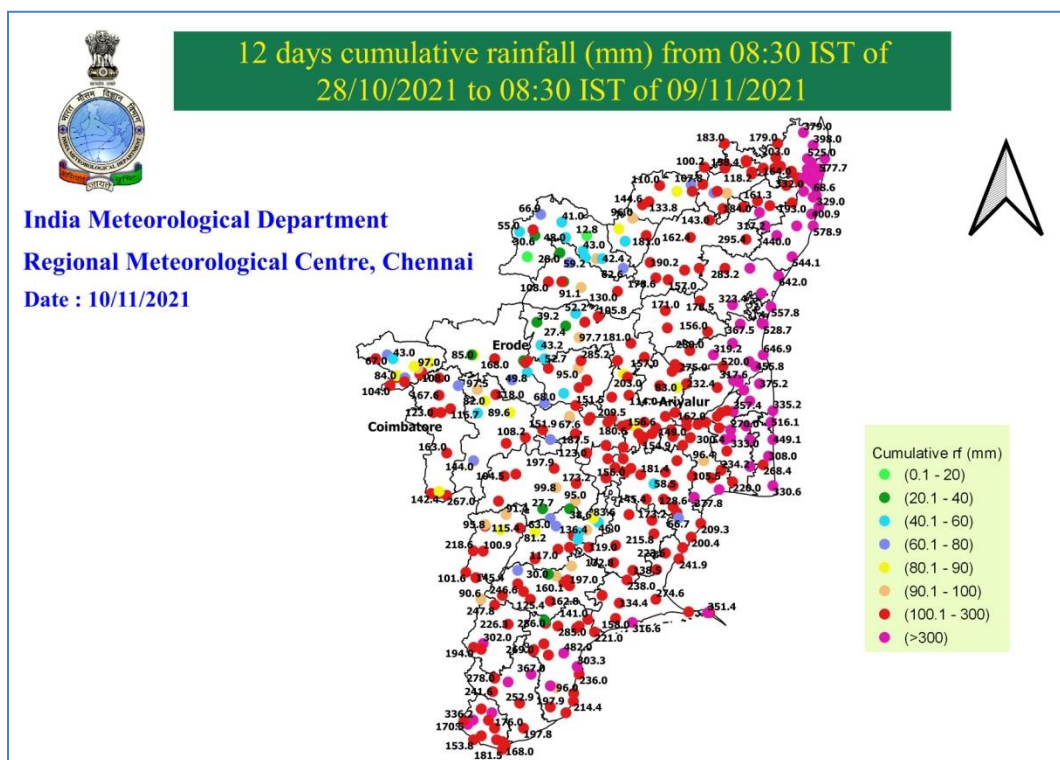


Fig.1 Cumulative rainfall during the past 12 days

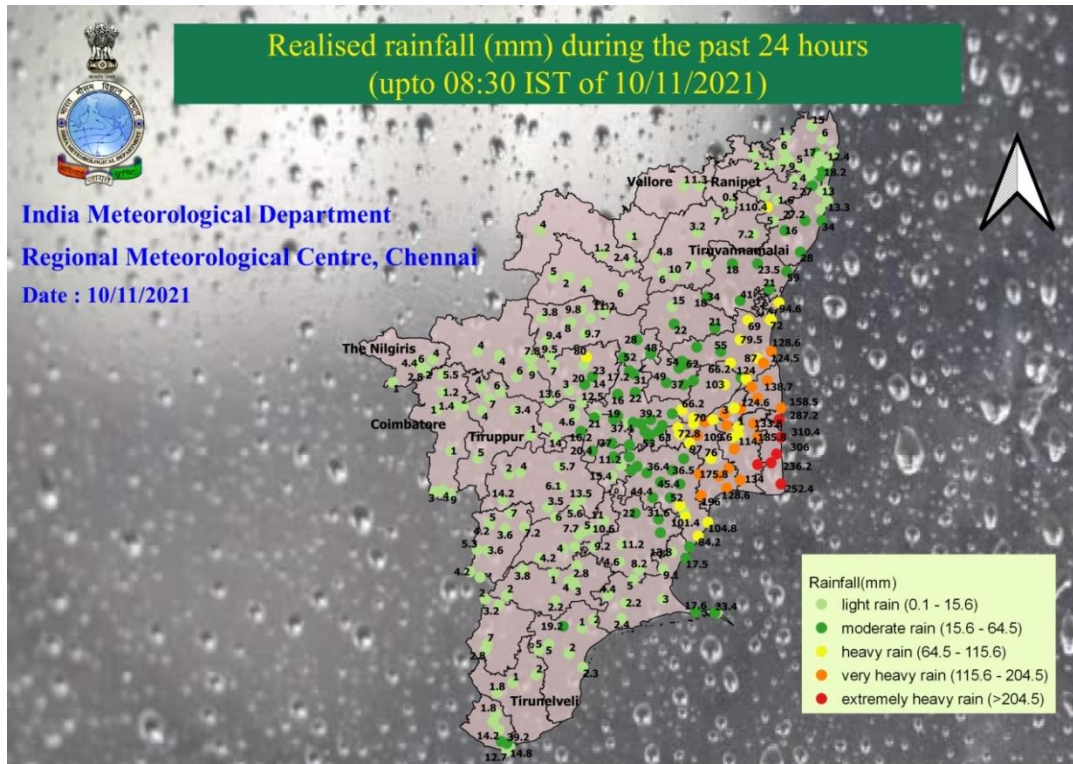
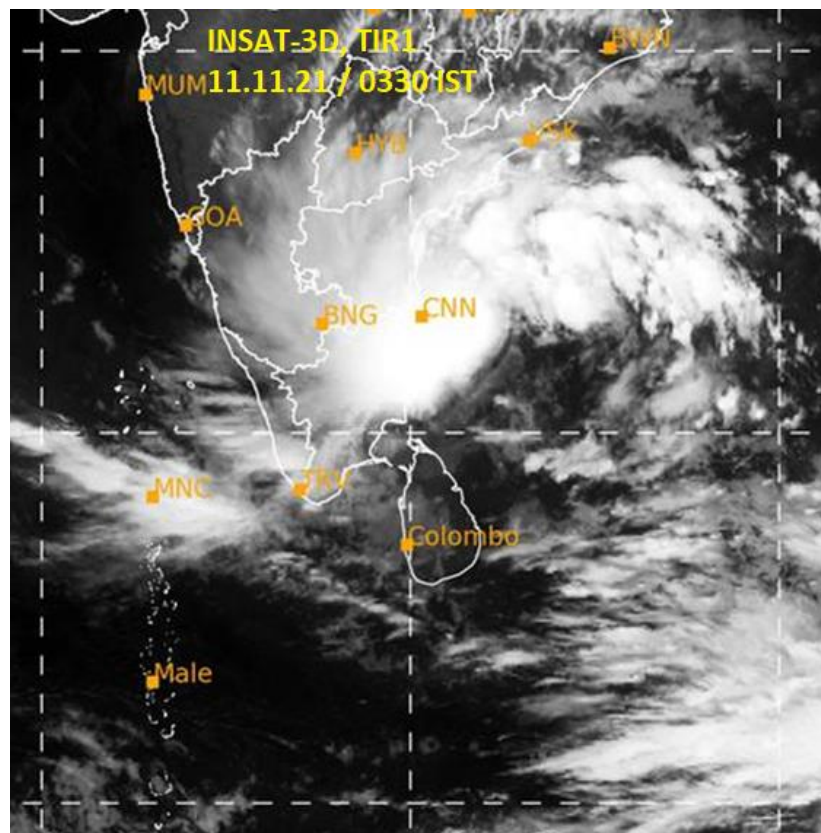
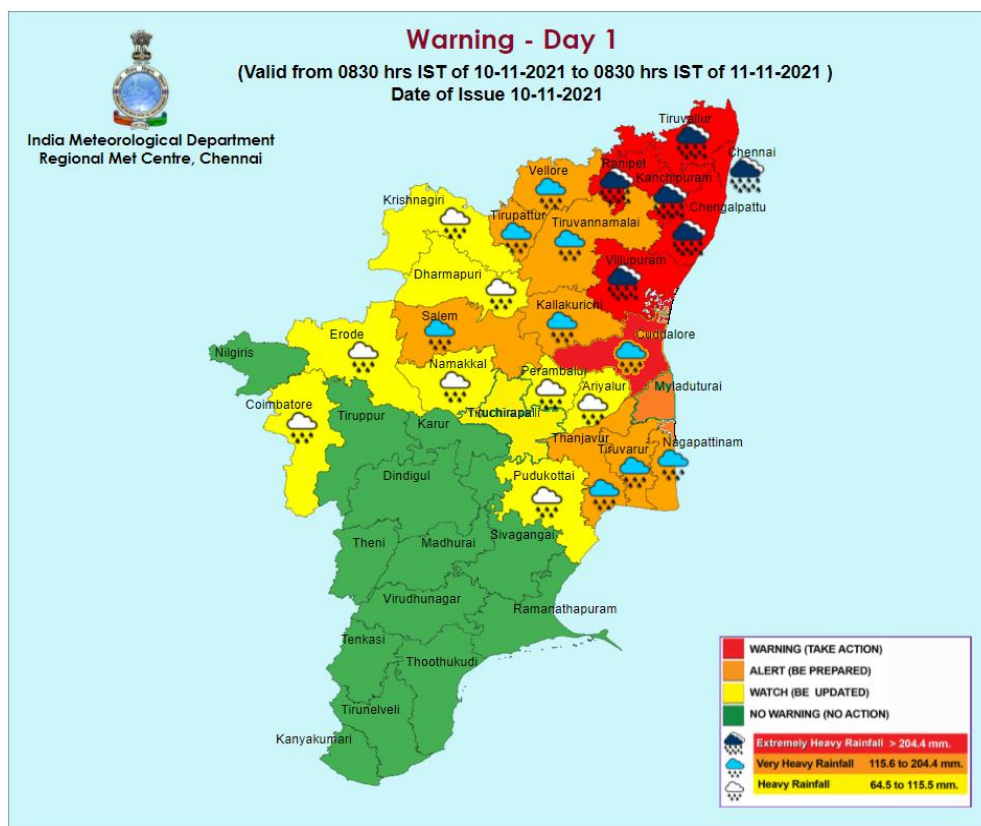


Fig.2 Rainfall during the 24-hr period from 08:30 IST of 09.11.21 to 08:30 IST of 10.11.21





<p>Forecast for 11.11.21</p>	<p><i>Thunderstorm with heavy to very heavy rainfall at a few places with extremely heavy falls at isolated places</i> is very likely to occur over Chennai, Tiruvallur, Kallakurichi, Salem, Vellore, Tirupattur, Ranipet, Thiruvannamalai districts of Tamil Nadu and Puducherry.</p> <p><i>Thunderstorm with heavy to very heavy rain</i> is also very likely to occur at a few places over Kancheepuram, Chengalpattu, Villupuram, Cuddalore, Mayiladuthurai, Ariyalur, Perambalur, Dharmapuri, Krishnagiri and Erode districts of Tamil Nadu and Puducherry.</p>	<p><u>Heavy rain</u> is also very likely to occur at isolated places over Nagapattinam, Tiruvarur, Thanjavur, Coimbatore, Nilgiris, Namakkal and Tiruchirappalli districts of Tamil Nadu and Karaikal.</p>
<p>Impact expected:</p>	<ul style="list-style-type: none"> ✓ Low lying areas marooned ✓ Severe damages to crops ✓ Uprooting of trees ✓ Damage to formal / informal settlements ✓ Increase in water levels in rivers, lakes & reservoirs ✓ Inland / riverine flooding ✓ Damages to cattle 	<ul style="list-style-type: none"> ▪ Water logging ▪ Low lying areas inundated ▪ Traffic affected ▪ Blockage of roads ▪ Increase in water levels in rivers, lakes & reservoirs ▪ Minor damages to structures ▪ Uprooting of trees ▪ Damages to crops and cattle ▪ Minor mudslides /landslides in hilly areas

