

भारत सरकार
भारतीय मौसम विज्ञान विभाग
प्रादेशिक मौसमविज्ञान केन्द्र
नं: 6, कालेज रोड, चेन्नै - 600006
दूरभाष : 044- 28271951



GOVERNMENT OF INDIA
INDIA METEOROLOGICAL DEPARTMENT
Regional Meteorological Centre
No. 6, College Road, Chennai-600006
Phone: 044 - 28271951

இந்திய அரசு

இந்திய வானிலை ஆய்வு துறை
மண்டல வானிலை ஆய்வு மையம்
6, கல்லூரி சாலை, சென்னை 600006 -

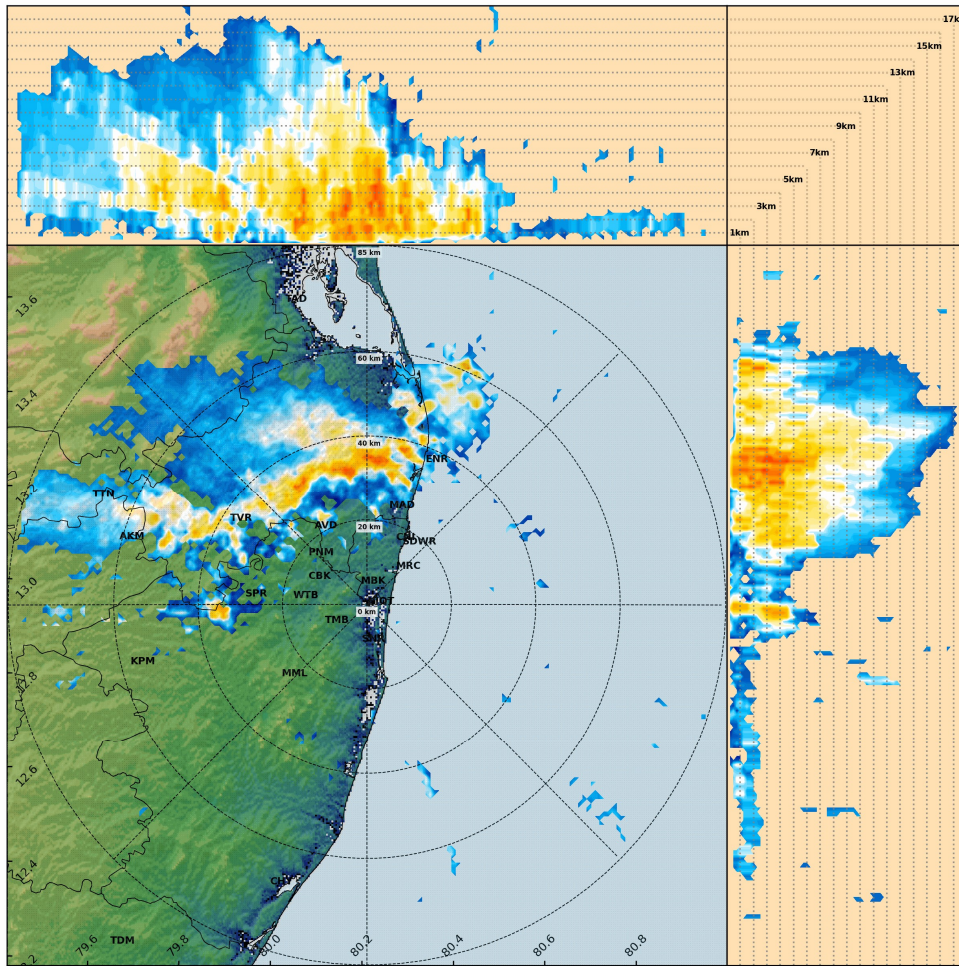
DATE :16-08-2023

Time of issue :2150 Hrs IST

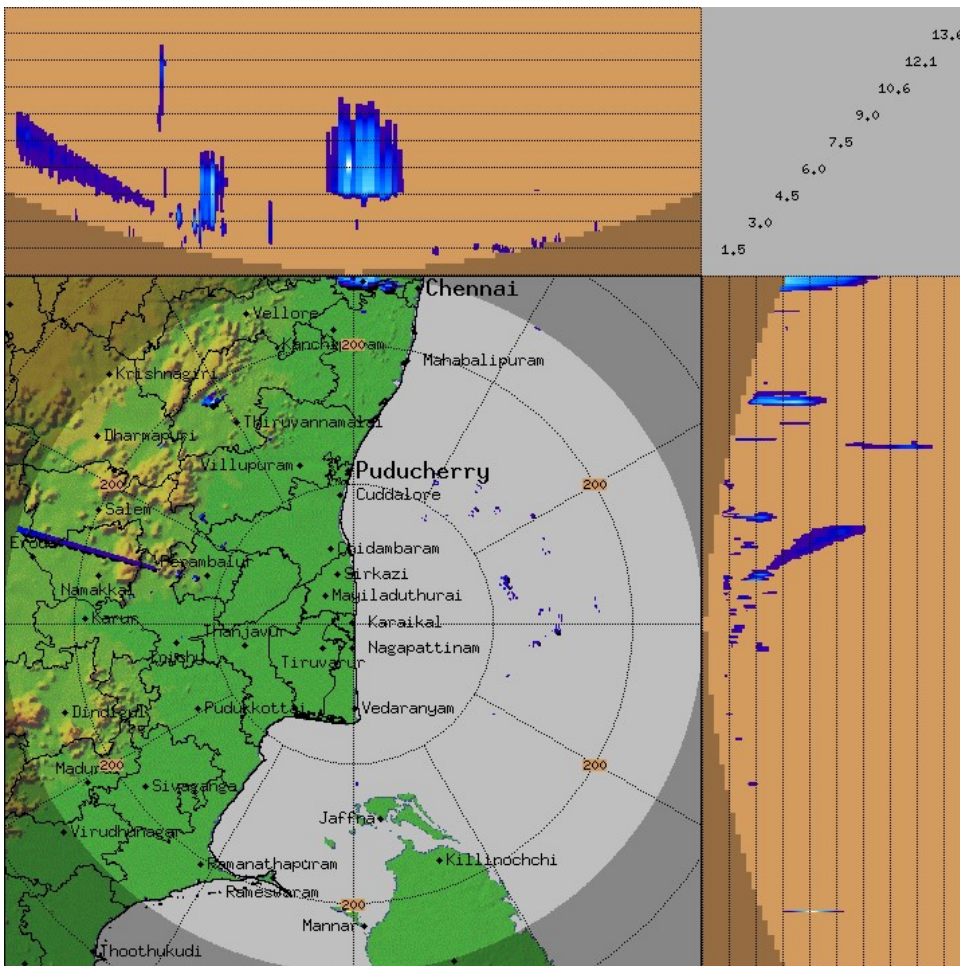
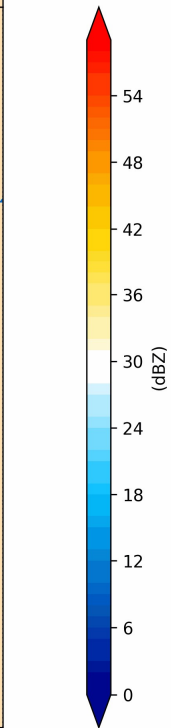
Sub: Rain/Thunderstorm warning/Lightning warning

VALIDITY	SEVERE WEATHER PHENOMENA (VERY LIKELY/MOST LIKELY)	DISTRICT AFFECTED (ISOLATED/A FEW/MANY PLACES)	IMPACT
3hrs (upto 0100 hrs IST of 17.08.2023)	Moderate Thunderstorm and lightning with Moderate rain is very likely	Isolated places over Tiruvallur, Ranipet, Chennai, Vellore, Kancheepuram and Chengalpattu districts of Tamilandu.	Water logging in some areas. Slippery roads in some areas. Traffic may be affected in some areas. Minor damage due to loose/unsecured structures.
	Light Thunderstorm and lightning with Light to Moderate rain is very likely	Isolated places over Thiruvannamalai, Dharmapuri, Kallakurichi, Villupuram, Perambalur, Cuddalore, Namakkal and Ramanathapuram districts of Tamilandu.	

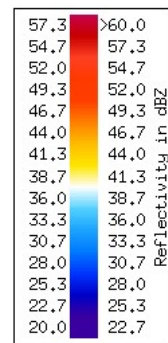
Duty Officer
For Director In-charge
Regional Weather Forecasting Centre
Regional Meteorological Centre,
Chennai.



X-DWR CHENNAI
12.9451N , 80.2115E , 24.0m
MAXZ DISPLAY
Range:85.0km
PRF: 1500/1250 Hz
Upper Height: 18.0km
Lower Height: 0km
15:51:03 UTC / 16 Aug 2023



KARAIKAL-RADAR
Max with panels
MAX_Z
Task: IMD-B
Min Hgt:0.0 km
Max Hgt:15.0 km
Max Range:250 km
16:02:29Z
16 AUG 2023 UTC



Thunderstorm & Lightning: Do's and Don'ts

(i) If at home or work -

Preparation:

- ✓ Look for darkening skies and increased wind.
- ✓ If you hear thunder, you are close enough to be struck by lightning.
- ✓ Keep monitoring local media for updates and warning instructions.
- ✓ Stay indoors and avoid travel if possible.
- ✓ Close windows and doors, and secure objects outside your home (e.g. furniture, bins, etc.).
- ✓ Ensure that children and animals are inside.
- ✓ Unplug unnecessary electrical appliances (to isolate them from the main power supply which may conduct a power surge during a lightning storm).
- ✓ Remove tree timber or any other debris that may cause a flying accident.

Response:

- ✓ Avoid taking a bath or a shower, and stay away from running water. This is because lightning can
- ✓ travel along metal pipes. Keep away from doors, windows, fireplaces, stoves, bathtubs, or any other electrical conductors.
- ✓ Avoid using corded phones and other electrical equipment that can conduct lightning.

(ii) If Outdoor -

Response:

- ✓ Go to safe shelter immediately – avoid metal structures and constructions with metal sheeting.
- ✓ Ideally, find shelter in a low-lying area and make sure that the spot chosen is not likely to flood.
- ✓ Crouch down with feet together and head down to make yourself a smaller target.
- ✓ Hair standing up on the back of your neck could indicate that lightning is imminent.
- ✓ Do not lie flat on the ground; this will make a bigger target.
- ✓ Keep away from all utility lines (phone, power, etc.), metal fences, trees, and hilltops.
- ✓ Do not take shelter under trees as these conduct electricity.

- ✓ Rubber-soled shoes and car tyres do not offer protection from lightning.

(iii) If travelling -

Response:

- ✓ Get off bicycles, motorcycles or farm vehicles that may attract lightning.
- ✓ Get to a safe shelter.
- ✓ If boating or swimming, get to land as quickly as possible and take shelter.
- ✓ During a storm, remain in your vehicle until help arrives or the storm has passed (the metal roof will provide protection if you are not touching metal inside); windows should be up; park away from trees and power lines.

(iv) If struck by lightning -

Treatment:

- ✓ Take the person who is struck by lightning to a hospital.
- ✓ If possible, give basic First Aid.
- ✓ People struck by lightning carry no electrical charge and can be handled safely.
- ✓ Check for broken bones, loss of hearing and eyesight.
- ✓ A victim of a lightning strike can suffer varying degrees of burn. Check the impact point and where the electricity left the body for injury marks.

(pl visit <https://ndma.gov.in/Resources/awareness/lightning/visuals>)