

	<b>இந்திய அரசு</b> இந்தியவானிலைஆய்வுதறை மண்டலவானிலைஆய்வுமையம் 6, கல்லூரிசாலை, சென்னை 600006 <b>தொலைபேசி: 044- 28271951</b>		<b>GOVERNMENT OF INDIA</b> <b>INDIA METEOROLOGICAL DEPARTMENT</b> <b>Regional Meteorological Centre</b> <b>No. 6, College Road,</b> <b>Chennai-600006</b> <b>Phone: 044- 28271951</b>
---	---	---	--

<b>DATE: 17-04-2024</b>	<b>Time of Issue: 19:00 Hrs. IST</b>
-------------------------	--------------------------------------

**Sub: Rain/Thunderstorm warning/Lightning warning**

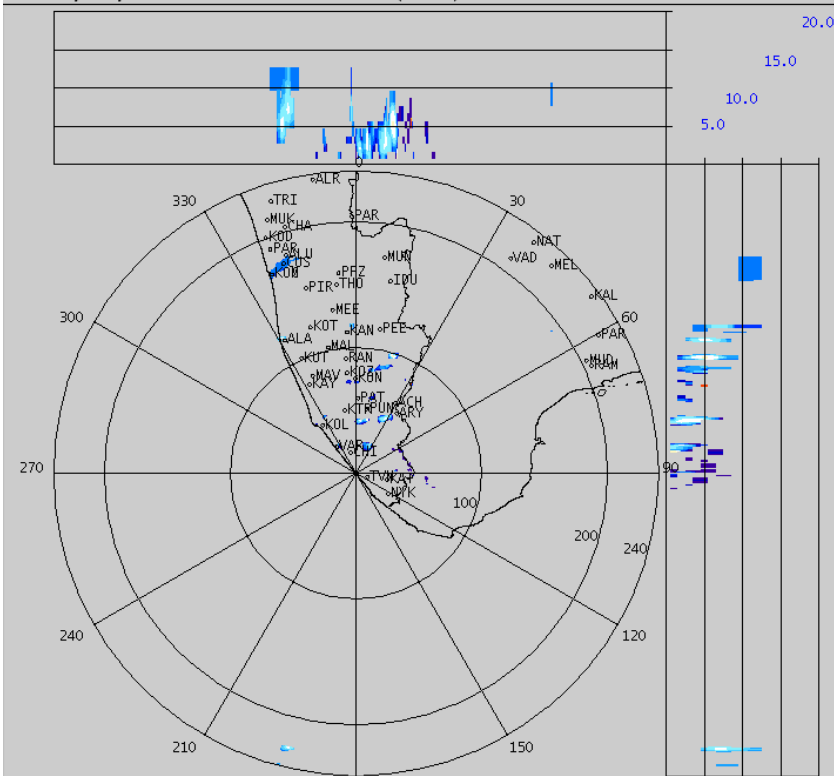
<b>VALIDITY</b>	<b>SEVERE WEATHER PHENOMENA (LIKELY/VERY LIKELY/MOST LIKELY)</b>	<b>DISTRICT AFFECTED (ISOLATED/A FEW/MANY/MOST PLACES)</b>	<b>IMPACT</b>
3 Hours (Upto 22:00 hrs. IST of 17.04.2024 )	Light to Moderate rain is very likely.	Isolated places over <b>Theni, Coimbatore, Dindigul, Tenkasi, Thirunelveli and Kanniyakumai</b> districts of Tamilnadu.	Water logging in some areas. Slippery roads in some areas. Traffic may be affected in some areas. Minor damage due to loose/unsecured structures.

Duty Officer  
 For Director In-Charge  
 Regional Weather Forecasting Centre  
 Regional Meteorological Centre  
 Chennai

12:58:36 (UTC)

MAX(Z)

DWR CDWRTERLS  
( 8.5374N , 76.8657E , 27.0000 mts )



Height	: 20.0 Km
Layer Spacing	: 1.0 Km
Z (Lo, Hi)	: 0.0, 70.0 dBZ
Grid size	: 1 Km
Display Range	: 240 Km
Display Res	: 0.9 Km/Pix
DDR Enable	: Yes
Scan Elev (Lo, Hi)	: 0.5,21.0 Deg
PRF (Lo, Hi)	: 450, 600 Hz
Scan Res	: 150 mts
Scan RPM	: 1.5
Log Threshold	: 8 dB
DTP	: 57
Pulse Width	: 1.0 micro sec
Clutter Filter	: OFF
SQI	: 0.25
CSR	: 20 dB
Scan Range	: 240 Km
Preprocessings	: CL
Filters	: NONE

A vertical color scale legend for dBZ. It consists of 16 horizontal color swatches, each with a corresponding numerical value to its right. The values range from 0.00 at the bottom to 56.00 at the top, with increments of 4.00. The colors transition from dark blue at the bottom, through light blue, cyan, green, yellow, and orange, to red at the top. The top-most swatch is labeled 'No Data'.

Color	Value (dBZ)
Red	No Data
Red	56.00
Red	52.00
Orange	48.00
Orange	44.00
Yellow	40.00
Yellow	36.00
Light Green	32.00
Light Green	28.00
Cyan	24.00
Cyan	20.00
Light Blue	16.00
Light Blue	12.00
Blue	8.00
Blue	4.00
Dark Blue	0.00

## Thunderstorm & Lightning: Do's and Don'ts

### (i) If at home or work -

#### Preparation:

- ✓ Look for darkening skies and increased wind.
- ✓ If you hear thunder, you are close enough to be struck by lightning.
- ✓ Keep monitoring local media for updates and warning instructions.
- ✓ Stay indoors and avoid travel if possible.
- ✓ Close windows and doors, and secure objects outside your home (e.g. furniture, bins, etc.).
- ✓ Ensure that children and animals are inside.
- ✓ Unplug unnecessary electrical appliances (to isolate them from the main power supply which may conduct a power surge during a lightning storm).
- ✓ Remove tree timber or any other debris that may cause a flying accident.

#### Response:

- ✓ Avoid taking a bath or a shower, and stay away from running water. This is because lightning can travel along metal pipes. Keep away from doors, windows, fireplaces, stoves, bathtubs, or any other electrical conductors.
- ✓ Avoid using corded phones and other electrical equipment that can conduct lightning.

### (ii) If Outdoor -

#### Response:

- ✓ Go to safe shelter immediately – avoid metal structures and constructions with metal sheeting.
- ✓ Ideally, find shelter in a low-lying area and make sure that the spot chosen is not likely to flood.
- ✓ Crouch down with feet together and head down to make yourself a smaller target.
- ✓ Hair standing up on the back of your neck could indicate that lightning is imminent.
- ✓ Do not lie flat on the ground; this will make a bigger target.
- ✓ Keep away from all utility lines (phone, power, etc.), metal fences, trees, and hilltops.
- ✓ Do not take shelter under trees as these conduct electricity.
- ✓ Rubber-soled shoes and car tyres do not offer protection from lightning.

### (iii) If travelling -

#### Response:

- ✓ Get off bicycles, motorcycles or farm vehicles that may attract lightning.
- ✓ Get to a safe shelter.
- ✓ If boating or swimming, get to land as quickly as possible and take shelter.
- ✓ During a storm, remain in your vehicle until help arrives or the storm has passed (the metal roof will provide protection if you are not touching metal inside); windows should be up; park away from trees and power lines.

### (iv) If struck by lightning -

#### Treatment:

- ✓ Take the person who is struck by lightning to a hospital.
- ✓ If possible, give basic First Aid.
- ✓ People struck by lightning carry no electrical charge and can be handled safely.
- ✓ Check for broken bones, loss of hearing and eyesight.
- ✓ A victim of a lightning strike can suffer varying degrees of burn. Check the impact point and where the electricity left the body for injury marks.

(pl visit <https://ndma.gov.in/Resources/awareness/lightning/visuals>)

