



**India Meteorological Department  
Earth System Science Organisation  
(Ministry of Earth Sciences)**

**BULLETIN NO. : 26 (BOB/02/2019)**

**TIME OF ISSUE: 2230 HOURS IST**

**DATED: 29.04.2019**

**FROM: INDIA METEOROLOGICAL DEPARTMENT (FAX NO. 24643965/24699216/24623220)**

**TO: CONTROL ROOM, NDM, MINISTRY OF HOME AFFAIRS (FAX.NO. 23093750)**

**CONTROL ROOM NDMA (FAX.NO. 26701729)**

**CABINET SECRETARIAT (FAX.NO.23012284, 23018638)**

**PS TO HON'BLE MINISTER FOR S & T AND EARTH SCIENCES (FAX NO.23316745)**

**SECRETARY, MOES, (FAX NO. 24629777)**

**H.Q. (INTEGRATED DEFENCE STAFF AND CDS) (FAX NO. 23005137/23005147)**

**DIRECTOR GENERAL, DOORDARSHAN (23385843)**

**DIRECTOR GENERAL, AIR (23421105, 23421219)**

**PIB MOES (FAX NO. 23389042)**

**UNI (FAX NO. 23355841)**

**D.G. NATIONAL DISASTER RESPONSE FORCE (NDRF) (FAX NO. 26105912, 2436 3260)**

**DIRECTOR, PUNCTUALITY, INDIAN RAILWAYS (FAX NO. 23388503)**

**CHIEF SECRETARY, GOVT. OF ODISHA (FAX NO. 0674 -2536660)**

**CHIEF SECRETARY, ANDHRA PRADESH (FAX NO. 0863-2441029, 08645-246600)**

**CHIEF SECRETARY, TAMIL NADU (FAX NO. 044-25672304)**

**CHIEF SECRETARY, ANDAMAN & NICOBAR ISLANDS (FAX NO. 03192- 232656)**

**CHIEF SECRETARY, WEST BENGAL (FAX NO. 033-22144328)**

**CHIEF SECRETARY, PUDUCHERRY (FAX NO. 0413-2337575)**

**CHIEF SECRETARY, KERALA (FAX NO. 0471-2327176)**

**CHIEF SECRETARY, LAKSHADWEEP ISLANDS (FAX NO. 04896-262184)**

**Sub: Severe Cyclonic Storm over Southeast & adjoining Southwest Bay of Bengal: Cyclone Watch for Odisha Coast**

The **Severe Cyclonic Storm 'FANI'** (pronounced as 'FONI') over Southeast & adjoining Southwest Bay of Bengal moved nearly northwards with a speed of about 13 kmph in last six hours and lay centred at 2030 hrs IST of 29<sup>th</sup> April, 2019 near latitude 10.4°N and longitude 86.7°E over Southeast & adjoining Southwest Bay of Bengal, about 630 km east-northeast of Trincomalee (Sri Lanka), 760 km east-southeast of Chennai (Tamil Nadu) and 880 km south-southeast of Machilipatnam (Andhra Pradesh). It is very likely to intensify into a **Very Severe Cyclonic Storm** during next 24 hours and into an **Extremely Severe Cyclonic Storm** during subsequent 24 hours. **It is very likely to move northwestwards till 01<sup>st</sup> May evening and thereafter recurve north-northeastwards towards Odisha Coast.**

Forecast track and intensity are given in the following table:

Date/Time(IST)	Position (Lat. °N/ long. °E)	Maximum sustained surface wind speed (Kmph)	Category of cyclonic disturbance
29.04.19/2030	10.4/86.7	100-110 gusting to 125	Severe Cyclonic Storm
29.04.19/2330	10.6/86.5	110-120 gusting to 135	Severe Cyclonic Storm
30.04.19/0530	11.2/86.2	120-130 gusting to 145	Severe Cyclonic Storm
30.04.19/1130	11.7/85.7	130-140 gusting to 155	Very Severe Cyclonic Storm
30.04.19/1730	12.2/85.1	135-145 gusting to 160	Very Severe Cyclonic Storm
01.05.19/0530	12.9/84.3	150-160 gusting to 180	Very Severe Cyclonic Storm
01.05.19/1730	13.5/83.6	160-170 gusting to 190	Extremely Severe Cyclonic Storm
02.05.19/0530	14.3/83.5	170-180 gusting to 200	Extremely Severe Cyclonic Storm
02.05.19/1730	15.4/83.6	170-180 gusting to 200	Extremely Severe Cyclonic Storm
03.05.19/0530	16.7/84.0	170-180 gusting to 200	Extremely Severe Cyclonic Storm
03.05.19/1730	18.2/84.7	170-180 gusting to 200	Extremely Severe Cyclonic Storm
04.05.19/0530	19.8/86.0	160-170 gusting to 190	Extremely Severe Cyclonic Storm
04.05.19/1730	21.0/87.3	150-160 gusting to 185	Very Severe Cyclonic Storm

**Spatial rainfall distribution: Isolated: <25%, A few: 26-50%, Many: 51-75%, Most: 76-100%**

**Rainfall amount (mm): Heavy rain: 64.5 – 115.5, Very heavy rain: 115.6 – 204.4, Extremely heavy rain: 204.5 or more.**

## **Warnings:**

### **(i) Heavy rainfall warning**

- Light to moderate rainfall at many places with heavy falls at isolated places very likely over Kerala on 30<sup>th</sup> April, 2019. Light to moderate rainfall at a few places very likely over north coastal Tamil Nadu & south coastal Andhra Pradesh on 30<sup>th</sup> April, 2019.
- Light to moderate rainfall at few places very likely over north coastal Andhra Pradesh & south coastal Odisha on 2<sup>nd</sup> May. It is likely to increase with rainfall at most places with heavy to very heavy rainfall at a few places over coastal Odisha & adjoining districts of north coastal Andhra Pradesh on 3<sup>rd</sup> & 4<sup>th</sup> May. Light to moderate rainfall at most places with heavy falls at isolated places also very likely over coastal districts of West Bengal on 3<sup>rd</sup> & 4<sup>th</sup> May.

### **(ii) Wind warning**

- Gale wind speed reaching 100-110 kmph gusting to 125 kmph is prevailing over Southeast & adjoining Southwest Bay of Bengal. It is very likely to increase gradually becoming 120-130 kmph gusting to 145 kmph over Southwest & adjoining Southeast Bay of Bengal from 30<sup>th</sup> morning and 160-170 kmph gusting to 190 kmph over Westcentral & adjoining Southwest Bay of Bengal off north Tamilnadu, Puducherry and south Andhra Pradesh Coasts from 01<sup>st</sup> May evening.
- Strong wind speed reaching 30-40 kmph gusting to 50 kmph very likely along & off Tamilnadu & Puducherry coast, Comorin area and Gulf of Mannar is very likely to become squally wind speed reaching 40-50 kmph gusting to 60 kmph from 30<sup>th</sup> morning & 50-60 kmph gusting to 70 kmph from 30<sup>th</sup> evening along north Tamilnadu, Puducherry and south Andhra Pradesh Coasts for subsequent 24 hours.
- Strong wind speed reaching 30-40 kmph gusting to 50 kmph very likely along & off Kerala coast is very likely to become squally wind speed reaching 40-50 kmph gusting to 60 kmph on 30<sup>th</sup> May.
- Squally wind speed reaching 40-50 kmph gusting to 60 kmph is very likely to commence along & off north Andhra Pradesh & Odisha Coasts from 2<sup>nd</sup> May and likely to become gale wind, speed reaching 60-70 kmph gusting to 85 kmph from 3<sup>rd</sup> May morning and would increase gradually thereafter.
- Squally wind speed reaching 40-50 kmph gusting to 60 kmph is very likely along & off West Bengal coast from 2<sup>nd</sup> to 3<sup>rd</sup> May. It would become gale wind, speed reaching 60-70 kmph gusting to 85 kmph, from 4<sup>th</sup> May morning and would increase gradually thereafter.

### **(iii) Sea condition**

- The sea condition is very high over Southeast & adjoining Southwest Bay of Bengal. It is likely to become phenomenal over southwest & adjoining westcentral Bay of Bengal, off north Tamilnadu, Puducherry and south Andhra Pradesh Coasts from 30<sup>th</sup> morning and over westcentral Bay of Bengal during 1-3 May 2019 and over Northwest Bay of Bengal during 2-4 May.
- Sea conditions very likely to be rough to very rough along & off Puducherry, Tamilnadu and south Andhra Pradesh Coasts till 1<sup>st</sup> May 2019, along & off north Andhra Pradesh Coasts on 1-3 May and along & off Odisha and West Bengal Coasts during 2-4 May.

### **(iv) Fishermen Warning**

- The fishermen are advised not to venture into deep sea areas of Southeast Bay of Bengal & adjoining Equatorial Indian Ocean, Southwest Bay of Bengal and off Sri Lanka coast on 30<sup>th</sup> April; Southwest & adjoining westcentral Bay of Bengal, along & off Sri Lanka, Puducherry, Tamilnadu & south Andhra Pradesh coasts till 1<sup>st</sup> May, westcentral Bay of Bengal, along & off north Andhra Pradesh Coast during 1-3 May 2019 and northwest & adjoining westcentral Bay of Bengal along & off Odisha and West Bengal coasts from 2 May onwards.
- Those, who are out in deep sea above areas are advised to return to the coasts.

*The next bulletin will be issued at 0230 hrs IST of 30<sup>th</sup> April, 2019.*

**(Ananda Kumar Das)**  
**Scientist-E, RSMC, New Delhi**

*Copy to: CRS, Pune/ ACWC Kolkata/ Chennai/ CWC Bhubaneswar/CWC Visakhapatnam*

**Spatial rainfall distribution: Isolated: <25%, A few: 26-50%, Many: 51-75%, Most: 76-100%**  
**Rainfall amount (mm): Heavy rain: 64.5 – 115.5, Very heavy rain: 115.6 – 204.4, Extremely heavy rain: 204.5 or more.**

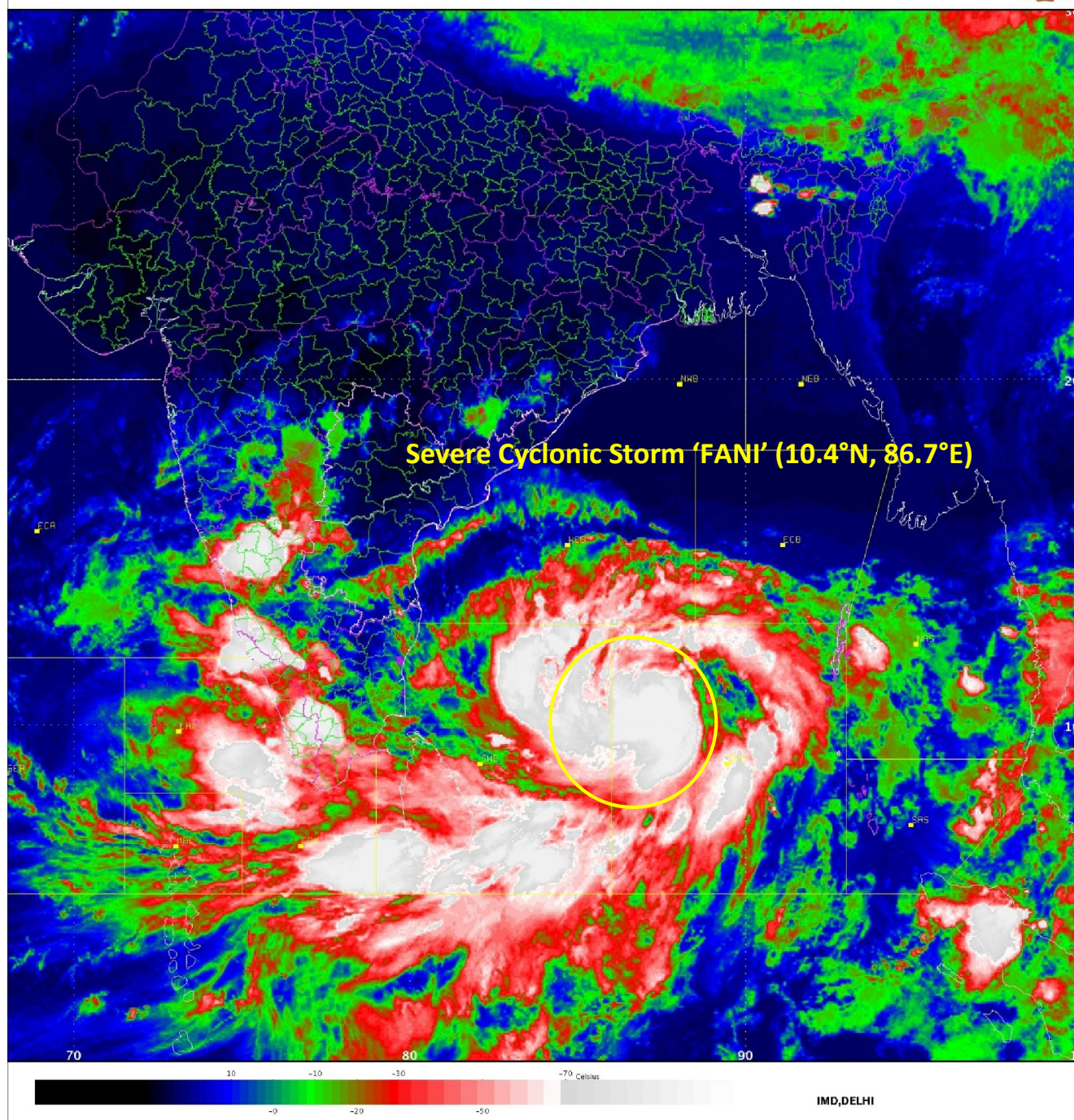
SAT:INSAT-3D

IMG\_TIR1\_TEMP 10.8 um

SECTOR BAY OF BENGAL Mercator (NHC LUT)

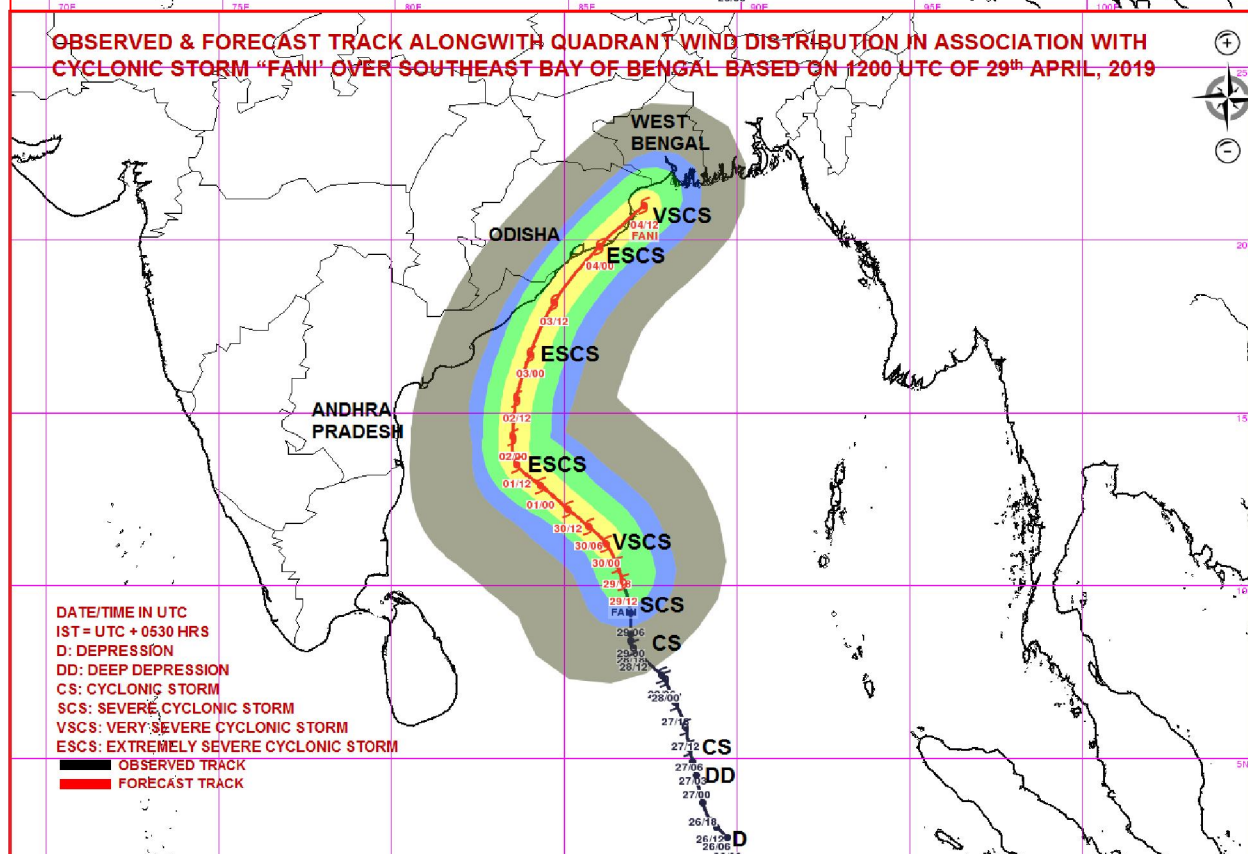
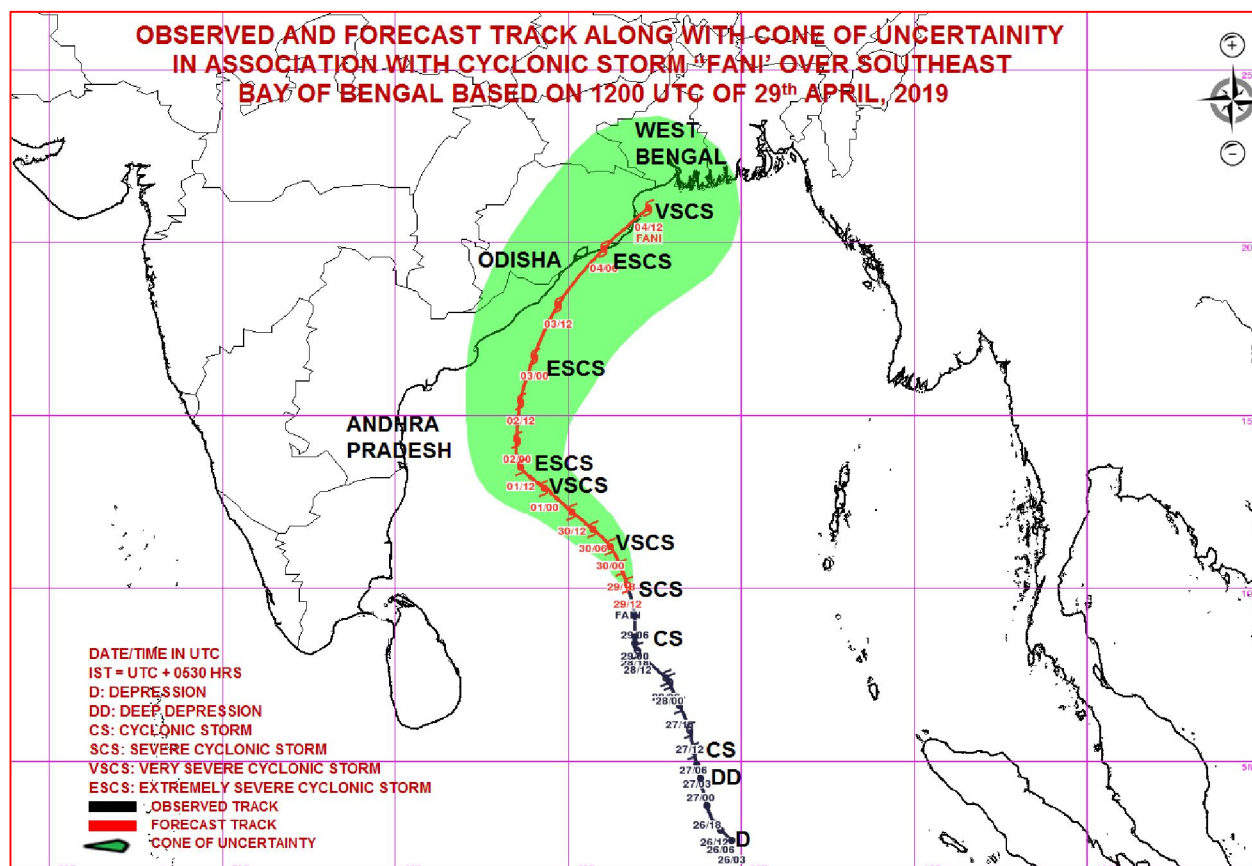
29-04-2019/15:30 GMT

29-04-2019/21:00 IST



**Spatial rainfall distribution: Isolated: <25%, A few: 26-50%, Many: 51-75%, Most: 76-100%**  
**Rainfall amount (mm): Heavy rain: 64.5 – 115.5, Very heavy rain: 115.6 – 204.4, Extremely heavy rain: 204.5 or more.**





MSW(knot/kmph)	Impact	Action
28-33 / (51-62)	Very rough seas.	Total suspension of fishing operations
34-49 / (63-91)	High to very high seas	Total suspension of fishing operations
50-63 / (92-117)	Very High seas	Total suspension of fishing operations
≥ 64 (≥118)	Phenomenal	Total suspension of fishing operations

**Spatial rainfall distribution:** Isolated: <25%, A few: 26-50%, Many: 51-75%, Most: 76-100%  
**Rainfall amount (mm):** Heavy rain: 64.5 – 115.5, Very heavy rain: 115.6 – 204.4, Extremely heavy rain: 204.5 or more.