



**India Meteorological Department
Earth System Science Organisation
(Ministry of Earth Sciences)**

BULLETIN NO. : 30 (BOB/02/2019)

TIME OF ISSUE: 1200 HOURS IST

DATED: 30.04.2019

FROM: INDIA METEOROLOGICAL DEPARTMENT (FAX NO. 24643965/24699216/24623220)

TO: CONTROL ROOM, NDM, MINISTRY OF HOME AFFAIRS (FAX.NO. 23093750)

CONTROL ROOM NDMA (FAX.NO. 26701729)

CABINET SECRETARIAT (FAX.NO.23012284, 23018638)

PS TO HON'BLE MINISTER FOR S & T AND EARTH SCIENCES (FAX NO.23316745)

SECRETARY, MOES, (FAX NO. 24629777)

H.Q. (INTEGRATED DEFENCE STAFF AND CDS) (FAX NO. 23005137/23005147)

DIRECTOR GENERAL, DOORDARSHAN (23385843)

DIRECTOR GENERAL, AIR (23421105, 23421219)

PIB MOES (FAX NO. 23389042)

UNI (FAX NO. 23355841)

D.G. NATIONAL DISASTER RESPONSE FORCE (NDRF) (FAX NO. 26105912, 2436 3260)

DIRECTOR, PUNCTUALITY, INDIAN RAILWAYS (FAX NO. 23388503)

CHIEF SECRETARY, GOVT. OF ODISHA (FAX NO. 0674 -2536660)

CHIEF SECRETARY, ANDHRA PRADESH (FAX NO. 0863-2441029, 08645-246600)

CHIEF SECRETARY, TAMIL NADU (FAX NO. 044-25672304)

CHIEF SECRETARY, ANDAMAN & NICOBAR ISLANDS (FAX NO. 03192- 232656)

CHIEF SECRETARY, WEST BENGAL (FAX NO. 033-22144328)

CHIEF SECRETARY, PUDUCHERRY (FAX NO. 0413-2337575)

CHIEF SECRETARY, KERALA (FAX NO. 0471-2327176)

CHIEF SECRETARY, LAKSHADWEEP ISLANDS (FAX NO. 04896-262184)

Sub: Very Severe Cyclonic Storm “FANI” over Southeast & adjoining Southwest Bay of Bengal: Cyclone Watch for Odisha and West Bengal Coast

The **Very Severe Cyclonic Storm ‘FANI’** (pronounced as ‘FONI’) over Southeast & adjoining Southwest Bay of Bengal moved north-northwestwards with a speed of about 23 kmph in last six hours and lay centred at 0830 hrs IST of 30th April, 2019 near latitude 12.3°N and longitude 86.2°E over Southeast & adjoining Southwest Bay of Bengal, about 830 km nearly south of Puri (Odisha) and 670 km south-southeast of Vishakhapatnam (Andhra Pradesh) and about 680 km northeast of Trincomalee (Sri Lanka). It is very likely to intensify further into an **Extremely Severe Cyclonic Storm** during next 12 hours. **It is very likely to move northwestwards till 01st May evening and thereafter recurve north-northeastwards and reach Odisha Coast by 3rd May afternoon with maximum sustained wind of speed 170-180 gusting to 200 kmph.**

Forecast track and intensity are given in the following table:

Date/Time(IST)	Position (Lat. °N/ long. °E)	Maximum sustained surface wind speed (Kmph)	Category of cyclonic disturbance
30.04.19/0830	12.3/86.2	135-145 gusting to 160	Very Severe Cyclonic Storm
30.04.19/1130	12.5/85.9	145-155 gusting to 170	Very Severe Cyclonic Storm
30.04.19/1730	13.1/85.3	160-170 gusting to 185	Very Severe Cyclonic Storm
30.04.19/2330	13.5/84.7	165-175 gusting to 195	Extremely Severe Cyclonic Storm
01.05.19/0530	13.8/84.3	170-180 gusting to 200	Extremely Severe Cyclonic Storm
01.05.19/1730	14.4/84.0	170-180 gusting to 200	Extremely Severe Cyclonic Storm
02.05.19/0530	15.4/84.0	170-180 gusting to 200	Extremely Severe Cyclonic Storm
02.05.19/1730	16.7/84.3	170-180 gusting to 200	Extremely Severe Cyclonic Storm
03.05.19/0530	18.0/84.8	170-180 gusting to 200	Extremely Severe Cyclonic Storm
03.05.19/1730	19.2/85.4	160-170 gusting to 190	Extremely Severe Cyclonic Storm
04.05.19/0530	20.3/86.3	140-150 gusting to 165	Very Severe Cyclonic Storm
04.05.19/1730	21.4/87.3	125-135 gusting to 150	Severe Cyclonic Storm
05.05.19/0530	22.5/88.4	90-100 gusting to 110	Severe Cyclonic Storm

Spatial rainfall distribution: Isolated: <25%, A few: 26-50%, Many: 51-75%, Most: 76-100%

Rainfall amount (mm): Heavy rain: 64.5 – 115.5, Very heavy rain: 115.6 – 204.4, Extremely heavy rain: 204.5 or more.

Warnings:

(i) Heavy rainfall warning

- Light to moderate rainfall at many places with heavy falls at isolated places very likely over Kerala during next 24 hours. Light to moderate rainfall at a few places very likely over north coastal Tamil Nadu & south coastal Andhra Pradesh during next 24 hours.
- Light to moderate rainfall at many places with heavy to very heavy rainfall very likely over north coastal Andhra Pradesh on 2nd May and light to moderate rainfall at most places with heavy to very heavy rainfall at a few places on 3rd May.
- Light to moderate rainfall at many places with heavy to very heavy rainfall very likely over south coastal Odisha on 2nd May. It is likely to increase with rainfall at most places with heavy to very heavy rainfall at a few places with **extremely heavy falls** at isolated places over coastal Odisha & its adjoining districts of interior Odisha on 3rd and over north Odisha on 4th May.
- Light to moderate rainfall at most places with heavy falls at isolated places very likely over coastal districts of West Bengal on 3rd and with heavy to very heavy rainfall at a few places with **extremely heavy falls** at isolated places over Gangetic West Bengal on 4th May.

(ii) Wind warning

- Gale wind speed reaching 135-145 kmph gusting to 160 kmph is prevailing over Southeast & adjoining Southwest Bay of Bengal. It is very likely to increase gradually becoming 165-175 kmph gusting to 195 kmph over Westcentral & adjoining Southwest Bay of Bengal off north Tamilnadu, Puducherry and south Andhra Pradesh Coast from 30th night onwards.
- Strong wind speed reaching 30-40 kmph gusting to 50 kmph very likely along & off Tamilnadu & Puducherry coast, Comorin area, Gulf of Mannar and Kerala on 30th.
- Squally wind speed reaching 40-50 kmph gusting to 60 kmph is very likely to commence along & off north Andhra Pradesh & Odisha Coasts from 2nd May and very likely to become gale wind, speed reaching 60-70 kmph gusting to 85 kmph from 3rd May morning and become 170-180 gusting 200 kmph over Odisha Coast and 90-100 gusting to 115 kmph over adjoining districts of north Andhra Pradesh by 3rd May evening.
- Squally wind speed reaching 40-50 kmph gusting to 60 kmph is very likely along & off West Bengal coast on 2nd May. It would become gale wind speed reaching 60-70 kmph gusting to 85 kmph from 3rd May evening and become 90-100 gusting to 115 kmph from 4th May morning.

(iii) Sea condition

- The sea condition is phenomenal over southwest & adjoining westcentral Bay of Bengal, off north Tamilnadu, Puducherry and south Andhra Pradesh Coasts from today morning and is very likely to become phenomenal over westcentral Bay of Bengal during 1-3 May 2019 and over Northwest Bay of Bengal during 2-4 May.
- Sea conditions very likely to be rough to very rough along & off Puducherry, Tamilnadu and south Andhra Pradesh Coasts till 1st May 2019, along & off north Andhra Pradesh Coasts on 1-3 May and along & off Odisha and West Bengal Coasts during 2-4 May.

(iv) Fishermen Warning

- The fishermen are advised not to venture into deep sea areas of Southeast Bay of Bengal & adjoining Equatorial Indian Ocean, Southwest Bay of Bengal and off Sri Lanka coast on 30th April; Southwest & adjoining westcentral Bay of Bengal, along & off Sri Lanka, Puducherry, Tamilnadu & south Andhra Pradesh coasts till 1st May, westcentral Bay of Bengal, along & off north Andhra Pradesh Coast during 1-3 May 2019 and northwest & adjoining Westcentral Bay of Bengal along & off Odisha and West Bengal coasts from 2 May onwards.
- Those, who are out in deep sea above areas are advised to return to the coasts.

The next bulletin will be issued at 1430 hrs IST of 30th April, 2019.

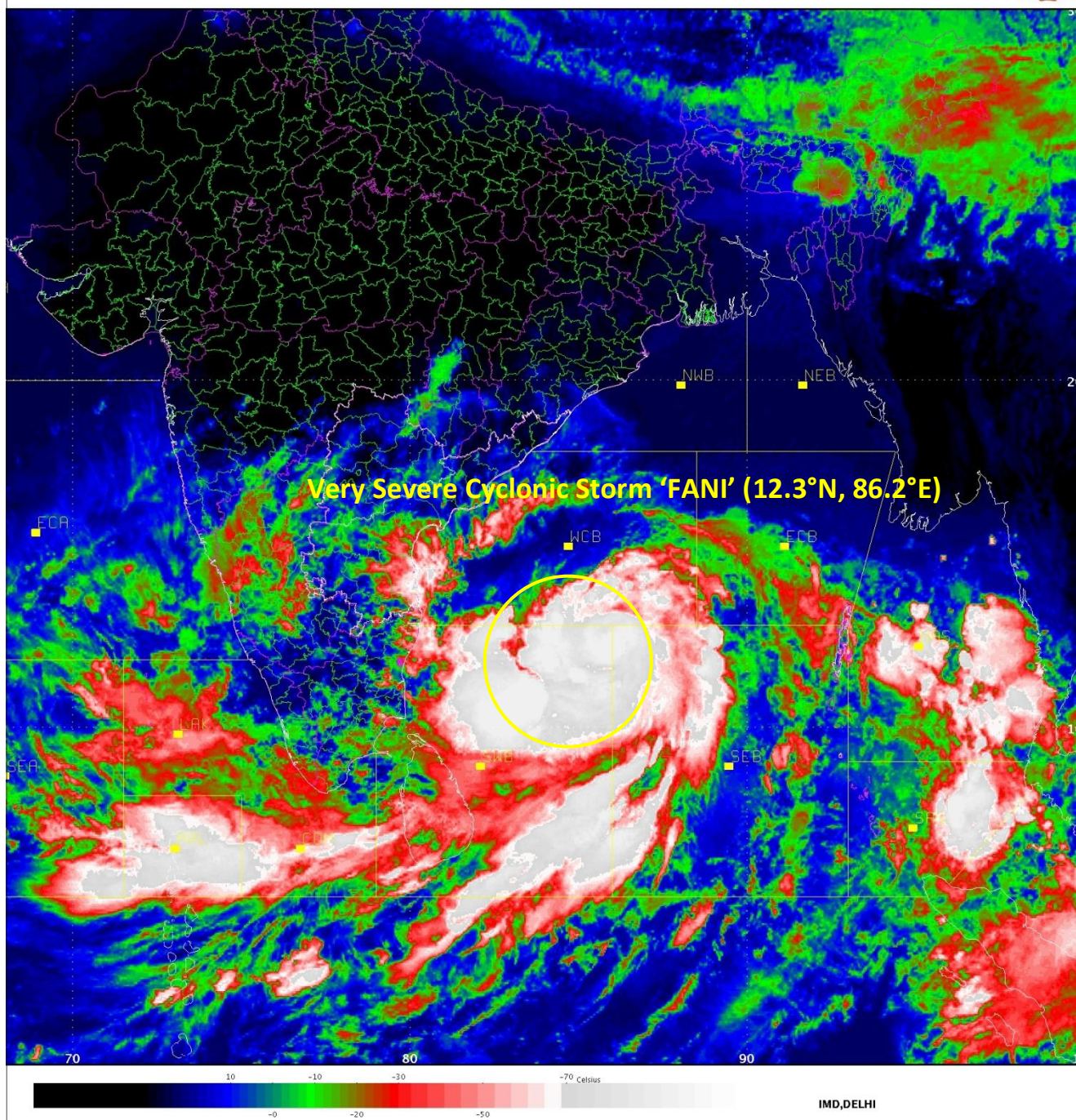
(Naresh Kumar)
Scientist-E, RSMC, New Delhi

Copy to: CRS, Pune/ ACWC Kolkata/ Chennai/ CWC Bhubaneswar/CWC Visakhapatnam

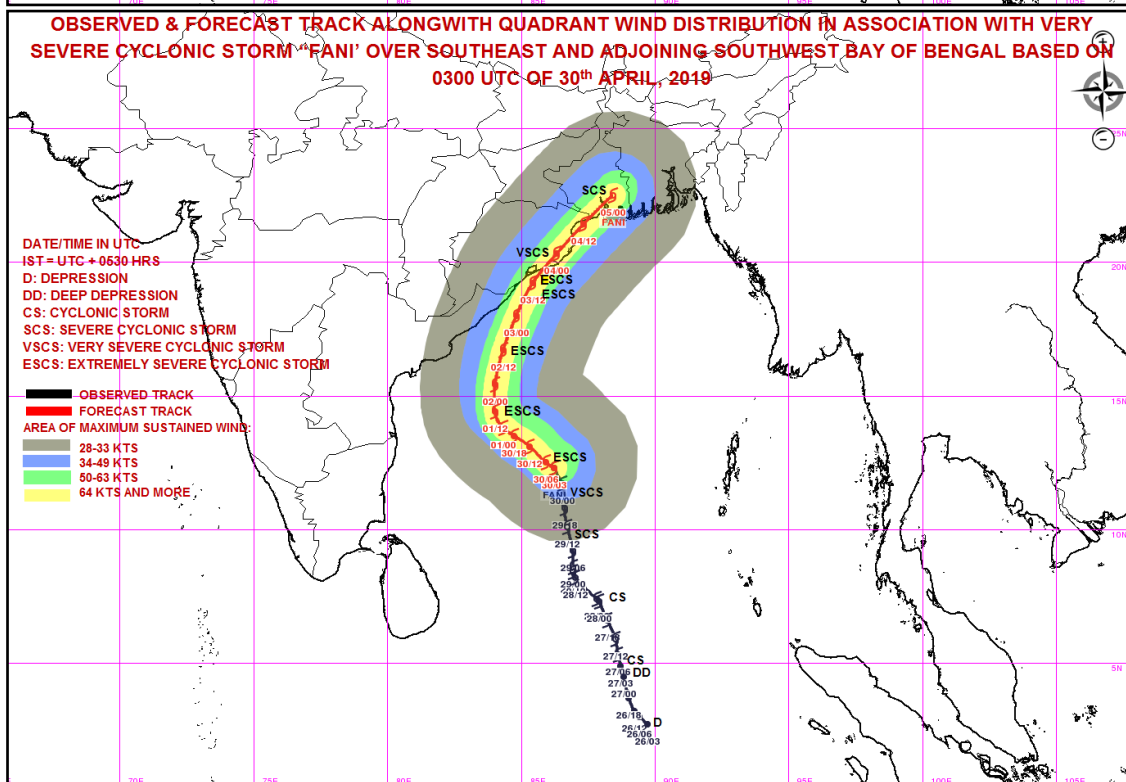
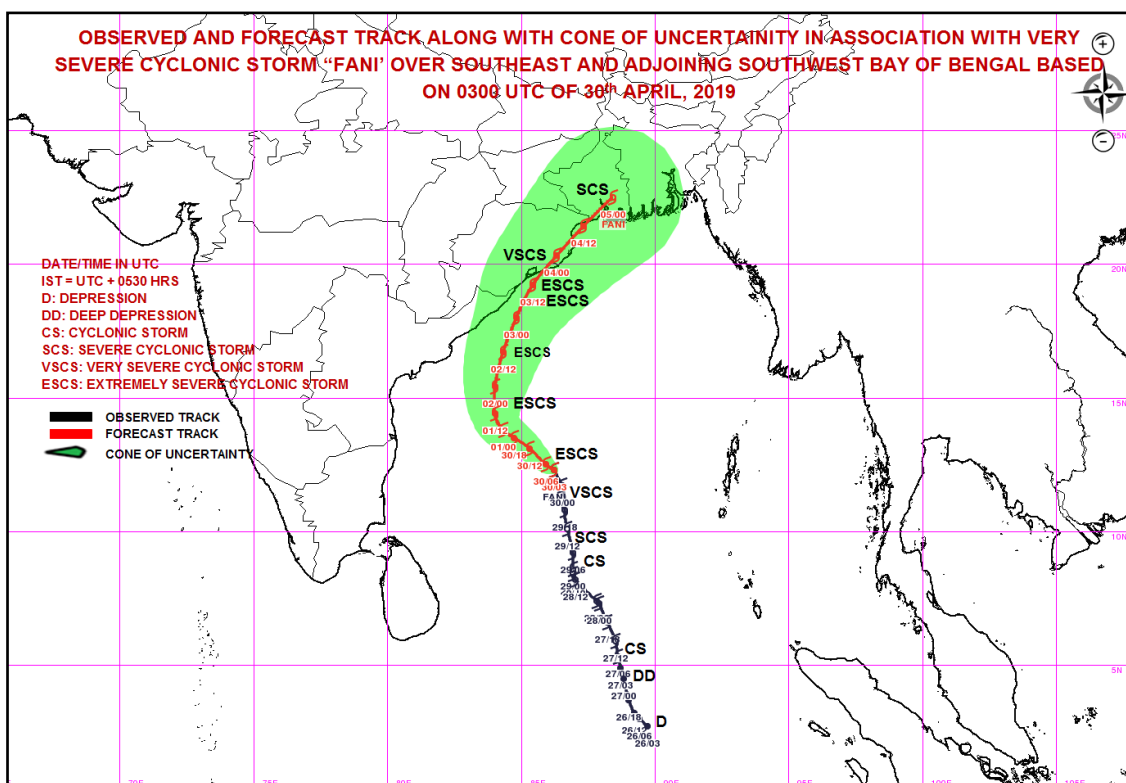
Spatial rainfall distribution: Isolated: <25%, A few: 26-50%, Many: 51-75%, Most: 76-100%
Rainfall amount (mm): Heavy rain: 64.5 – 115.5, Very heavy rain: 115.6 – 204.4, Extremely heavy rain: 204.5 or more.

SAT :INSAT-3D
IMG_TIR1_TEMP 10.8 um
SECTOR BAYOFBENGAL Mercator (NHC LUT)

30-04-2019/03:00 GMT
30-04-2019/08:30 IST



Spatial rainfall distribution: Isolated: <25%, A few: 26-50%, Many: 51-75%, Most: 76-100%
Rainfall amount (mm): Heavy rain: 64.5 – 115.5, Very heavy rain: 115.6 – 204.4, Extremely heavy rain: 204.5 or more.



MSW(knot/kmph)	Impact	Action
28-33 / (51-62)	Very rough seas.	Total suspension of fishing operations
34-49/(63-91)	High to very high seas	Total suspension of fishing operations
50-63/(92-117)	Very High seas	Total suspension of fishing operations
≥ 64 (≥118)	Phenomenal	Total suspension of fishing operations

Spatial rainfall distribution: Isolated: <25%, A few: 26-50%, Many: 51-75%, Most: 76-100%
Rainfall amount (mm): Heavy rain: 64.5 – 115.5, Very heavy rain: 115.6 – 204.4, Extremely heavy rain: 204.5 or more.