



**India Meteorological Department
Earth System Science Organisation
(Ministry of Earth Sciences)**

BULLETIN NO. : 09 (BOB/02/2019)

TIME OF ISSUE: 2015 HOURS IST

DATED: 27.04.2019

FROM: INDIA METEOROLOGICAL DEPARTMENT (FAX NO. 24643965/24699216/24623220)

TO: CONTROL ROOM, NDM, MINISTRY OF HOME AFFAIRS (FAX.NO. 23093750)

CONTROL ROOM NDMA (FAX.NO. 26701729)

CABINET SECRETARIAT (FAX.NO.23012284, 23018638)

PS TO HON'BLE MINISTER FOR S & T AND EARTH SCIENCES (FAX NO.23316745)

SECRETARY, MOES, (FAX NO. 24629777)

H.Q. (INTEGRATED DEFENCE STAFF AND CDS) (FAX NO. 23005137/23005147)

DIRECTOR GENERAL, DOORDARSHAN (23385843)

DIRECTOR GENERAL, AIR (23421105, 23421219)

PIB MOES (FAX NO. 23389042)

UNI (FAX NO. 23355841)

D.G. NATIONAL DISASTER RESPONSE FORCE (NDRF) (FAX NO. 26105912, 2436 3260)

DIRECTOR, PUNCTUALITY, INDIAN RAILWAYS (FAX NO. 23388503)

CHIEF SECRETARY, GOVT. OF ODISHA (FAX NO. 0674 -2536660)

CHIEF SECRETARY, ANDHRA PRADESH (FAX NO. 0863-2441029, 08645-246600)

CHIEF SECRETARY, TAMIL NADU (FAX NO. 044-25672304)

CHIEF SECRETARY, ANDAMAN & NICOBAR ISLANDS (FAX NO. 03192- 232656)

CHIEF SECRETARY, WEST BENGAL (FAX NO. 033-22144328)

CHIEF SECRETARY, PUDUCHERRY (FAX NO. 0413-2337575)

CHIEF SECRETARY, KERALA (FAX NO. 0471-2327176)

CHIEF SECRETARY, LAKSHADWEEP ISLANDS (FAX NO. 04896-262184)

Sub: Cyclonic Storm 'FANI' over southeast Bay of Bengal & neighbourhood

The **Cyclonic Storm 'FANI'** (pronounced as '**FONI**') over southeast Bay of Bengal & adjoining East Equatorial Indian Ocean, slightly intensified further and moved northwards with a speed of about 09 kmph in last six hours and lay centred at 1730 hrs IST of 27th April, 2019 near latitude 5.9°N and longitude 88.5°E over southeast Bay of Bengal & neighbourhood, about 850 km east-southeast of Trincomalee (Sri Lanka), 1200 km southeast of Chennai (Tamil Nadu) and 1390 km south-southeast of Machilipatnam (Andhra Pradesh). It is very likely to intensify into a **Severe Cyclonic Storm** during next 12 hours and into a **Very Severe Cyclonic Storm** during subsequent 24 hours. It is very likely to move northwestwards till 30th April and thereafter recurve northeastwards gradually.

Forecast track and intensity are given in the following table:

Date/Time(IST)	Position (Lat. °N/ long. °E)	Maximum sustained surface wind speed (Kmph)	Category of cyclonic disturbance
27.04.19/1730	5.9/88.5	80-90 gusting to 100	Cyclonic Storm
27.04.19/2330	6.5/88.3	90-100 gusting to 115	Severe Cyclonic Storm
28.04.19/0530	7.1/87.8	95-105 gusting to 120	Severe Cyclonic Storm
28.04.19/1130	7.6/87.1	100-110 gusting to 125	Severe Cyclonic Storm
28.04.19/1730	8.2/86.4	110-120 gusting to 135	Severe Cyclonic Storm
29.04.19/0530	9.4/85.8	120-130 gusting to 145	Very Severe Cyclonic Storm
29.04.19/1730	10.4/85.1	125-135 gusting to 150	Very Severe Cyclonic Storm
30.04.19/0530	11.2/84.5	135-145 gusting to 160	Very Severe Cyclonic Storm
30.04.19/1730	12.0/84.0	145-155 gusting to 170	Very Severe Cyclonic Storm
01.05.19/0530	12.6/83.8	145-155 gusting to 170	Very Severe Cyclonic Storm
01.05.19/1730	13.1/84.0	135-145 gusting to 160	Very Severe Cyclonic Storm
02.05.19/0530	13.5/84.2	130-140 gusting to 155	Very Severe Cyclonic Storm
02.05.19/1730	14.0/84.5	125-135 gusting to 150	Very Severe Cyclonic Storm

Spatial rainfall distribution: Isolated: <25%, A few: 26-50%, Many: 51-75%, Most: 76-100%

Rainfall amount (mm): Heavy rain: 64.5 – 115.5, Very heavy rain: 115.6 – 204.4, Extremely heavy rain: 204.5 or more.

Warnings:

(i) Heavy rainfall warning

- Light to moderate rainfall at many places with heavy falls at isolated places very likely over Kerala on 29th & 30th April, 2019. Light to moderate rainfall at few places over north coastal Tamil Nadu & coastal Andhra Pradesh on 30th April & 1st May, 2019.

(ii) Wind warning

- Gale wind speed reaching 80-90 kmph gusting to 100 kmph is prevailing over Southeast Bay of Bengal & neighbourhood. It is very likely to become 90-100 kmph gusting to 115 kmph from 27th night over the same area; 120-130 kmph gusting to 145 kmph over Southwest Bay of Bengal from 29th morning and 145-155 kmph gusting to 170 kmph over southwest & adjoining westcentral Bay of Bengal off north Tamilnadu, Puducherry and south Andhra Pradesh Coasts from 30th night. It is likely to decrease gradually thereafter with gale wind speed reaching 125-135 kmph gusting to 150 kmph over westcentral Bay of Bengal off Andhra Pradesh Coast on 2nd May 2019.
- Strong wind speed reaching 30-40 kmph gusting to 50 kmph likely to commence along & off Tamilnadu & Puducherry coast, Comorin area and Gulf of Mannar from 28th morning, becoming squally wind speed reaching 40-50 kmph gusting to 60 kmph from 29th morning. It is very likely to become squally wind speed reaching 50-60 kmph gusting to 70 kmph from 30th morning along north Tamilnadu, Puducherry and south Andhra Pradesh Coasts.
- Strong wind speed reaching 30-40 kmph gusting to 50 kmph likely to commence along & off Kerala coast from 28th evening and becoming squally wind speed reaching 40-50 kmph gusting to 60 kmph on 29th & 30th.

(iii) Sea condition

- The sea condition is very high over Southeast Bay of Bengal & neighbourhood. It is very likely to become very high to phenomenal over Southwest Bay of Bengal from 29th morning and phenomenal over southwest & adjoining westcentral Bay of Bengal, off north Tamilnadu, Puducherry and south Andhra Pradesh Coasts from 30th night.
- Sea conditions very likely to be rough to very rough along & off Puducherry, Tamilnadu and south Andhra Pradesh Coasts from 29th April to 1st May 2019 and westcentral Bay of Bengal off Andhra Pradesh Coast on 2nd May.

(iv) Fishermen Warning

- The fishermen are advised not to venture into deep sea areas of Southeast Bay of Bengal & adjoining Equatorial Indian Ocean on 27th & 28th; over Southwest Bay of Bengal and off Sri Lanka coast on 28th; Southwest & adjoining westcentral Bay of Bengal, along & off Sri Lanka, Puducherry, Tamilnadu & south Andhra Pradesh coasts from 29th April to 1st May and westcentral Bay of Bengal off Andhra Pradesh Coast on 2nd May.
- Those, who are out in deep sea areas are advised return to the coast by 28th April, 2019.

The next bulletin will be issued at 2330 hrs IST of 27th April, 2019.

(Naresh Kumar)
Scientist-E, RSMC, New Delhi

Copy to: CRS, Pune/ ACWC Kolkata/ Chennai/ CWC Bhubaneswar/CWC Visakhapatnam

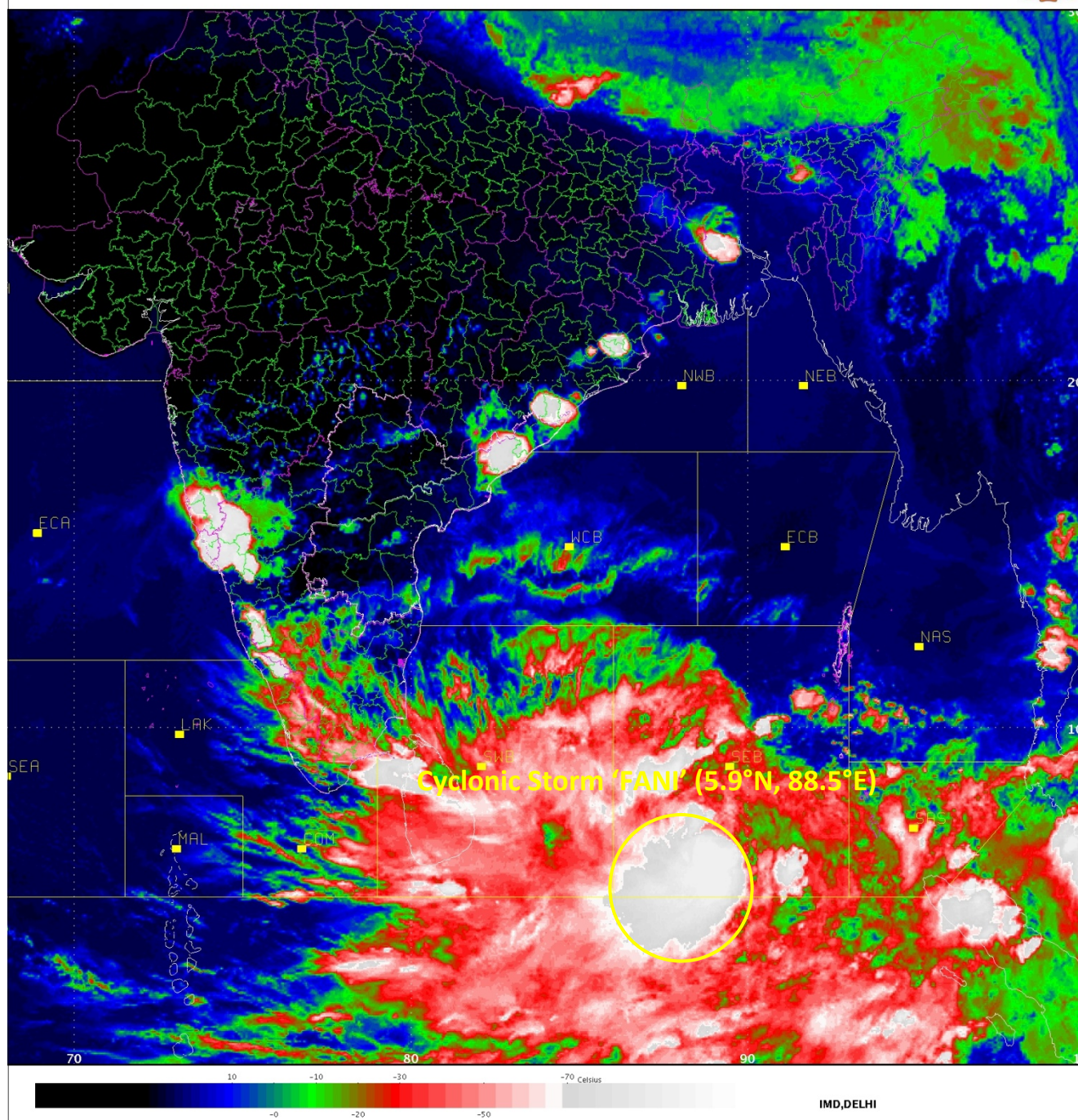
SAT :INSAT-3D

27-04-2019/12:00 GMT

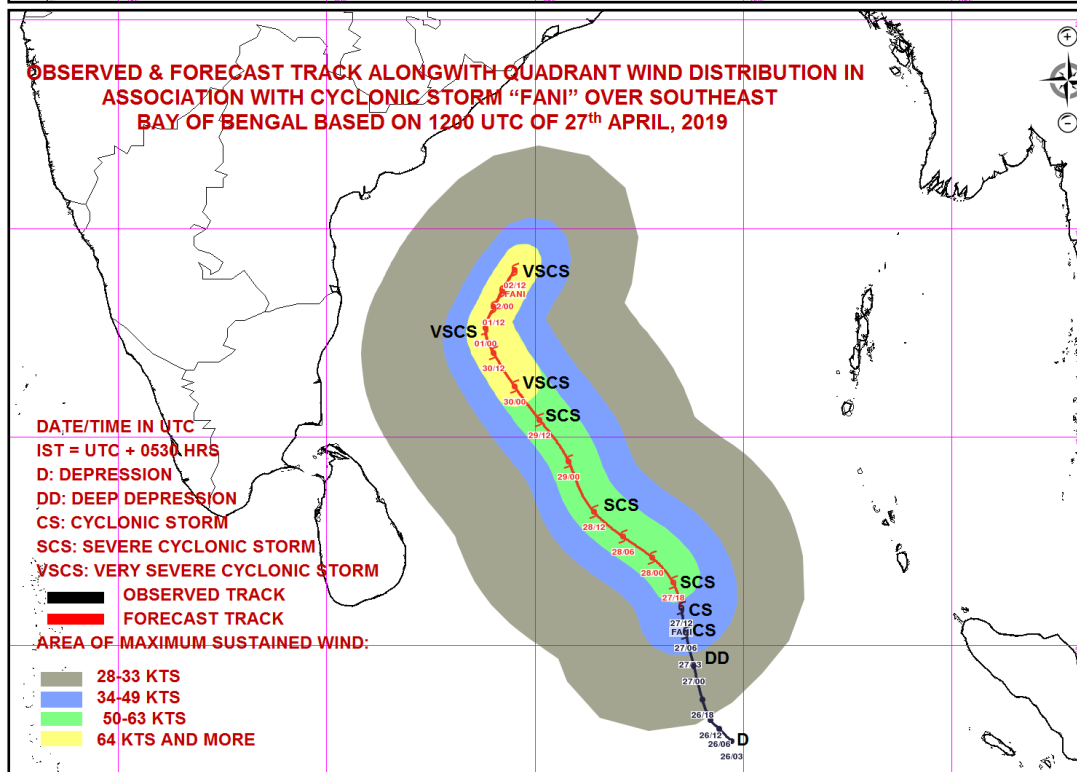
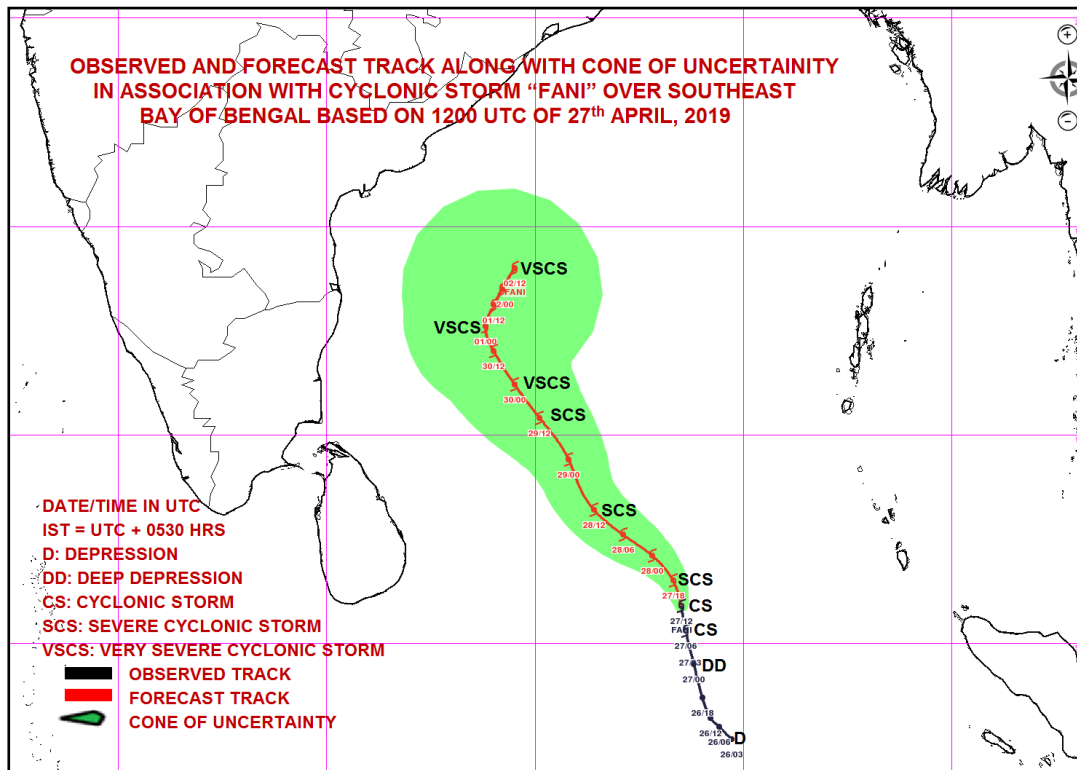
IMG_TIR1_TEMP 10.8 um

27-04-2019/17:30 IST

SECTOR BAY OF BENGAL Mercator (NHC LUT)



Spatial rainfall distribution: Isolated: <25%, A few: 26-50%, Many: 51-75%, Most: 76-100%
Rainfall amount (mm): Heavy rain: 64.5 – 115.5, Very heavy rain: 115.6 – 204.4, Extremely heavy rain: 204.5 or more.



MSW(knot)/kmph)	Impact	Action
28-33 /(51-62)	Very rough seas.	Total suspension of fishing operations
34-49/(63-91)	High to very high seas	Total suspension of fishing operations
50-63/(92-117)	Very High seas	Total suspension of fishing operations
≥ 64 (≥118)	Phenomenal	Total suspension of fishing operations

Spatial rainfall distribution: Isolated: <25%, A few: 26-50%, Many: 51-75%, Most: 76-100%
 Rainfall amount (mm): Heavy rain: 64.5 – 115.5, Very heavy rain: 115.6 – 204.4, Extremely heavy rain: 204.5 or more.